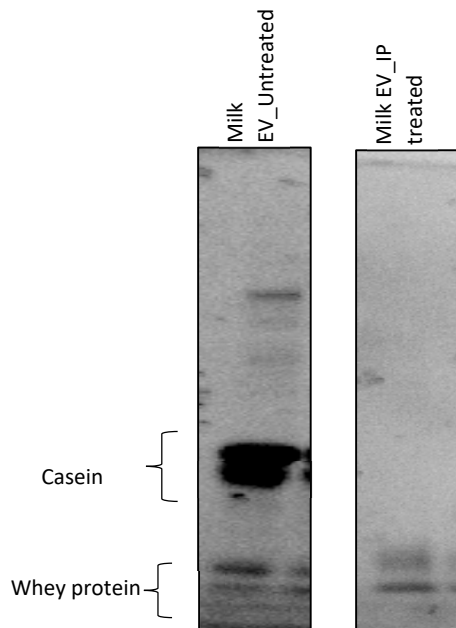


Supplementary information

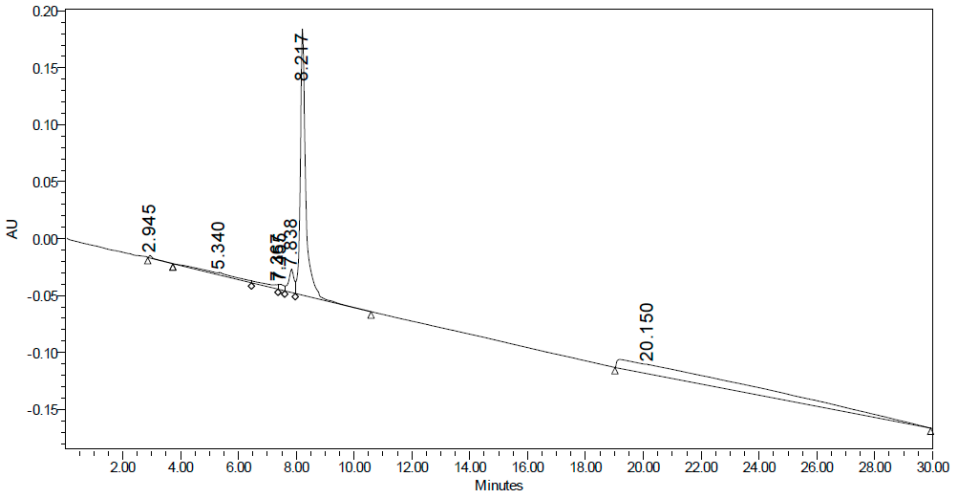
Supplementary Figure S1



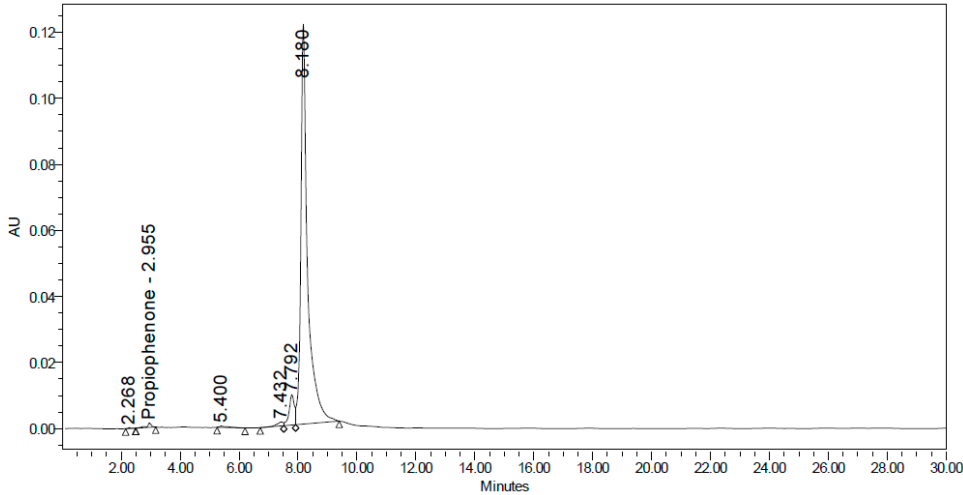
Supp Figure S1: Total protein separation by polyacrylamide gel electrophoresis indicates efficient removal of casein proteins in IP treated milk samples compared to untreated milk samples.

Supplementary Figure S2

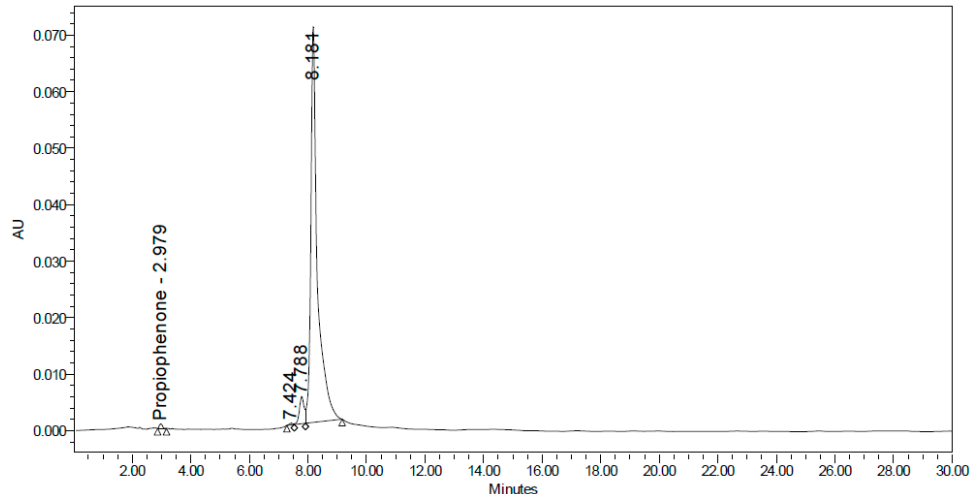
20 µg Dox



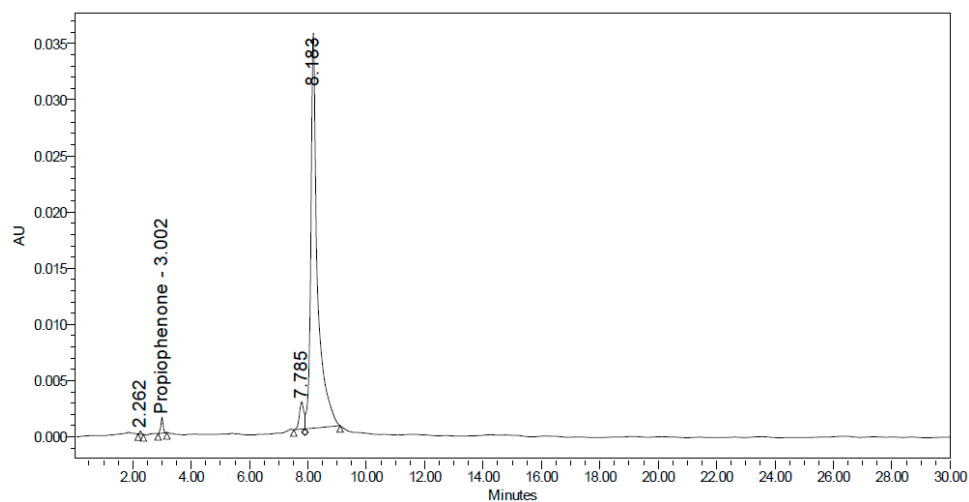
10 µg Dox



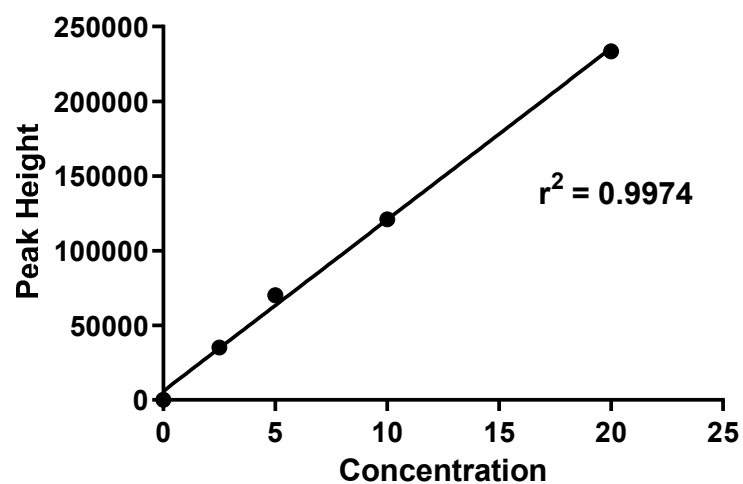
5 µg Dox



2.5 µg Dox

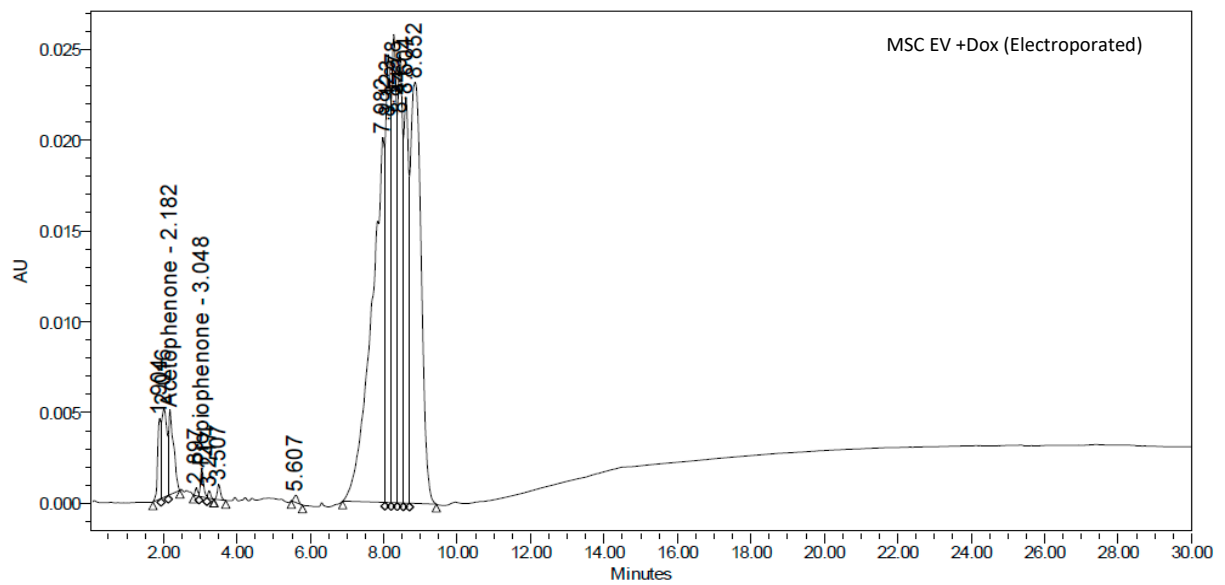
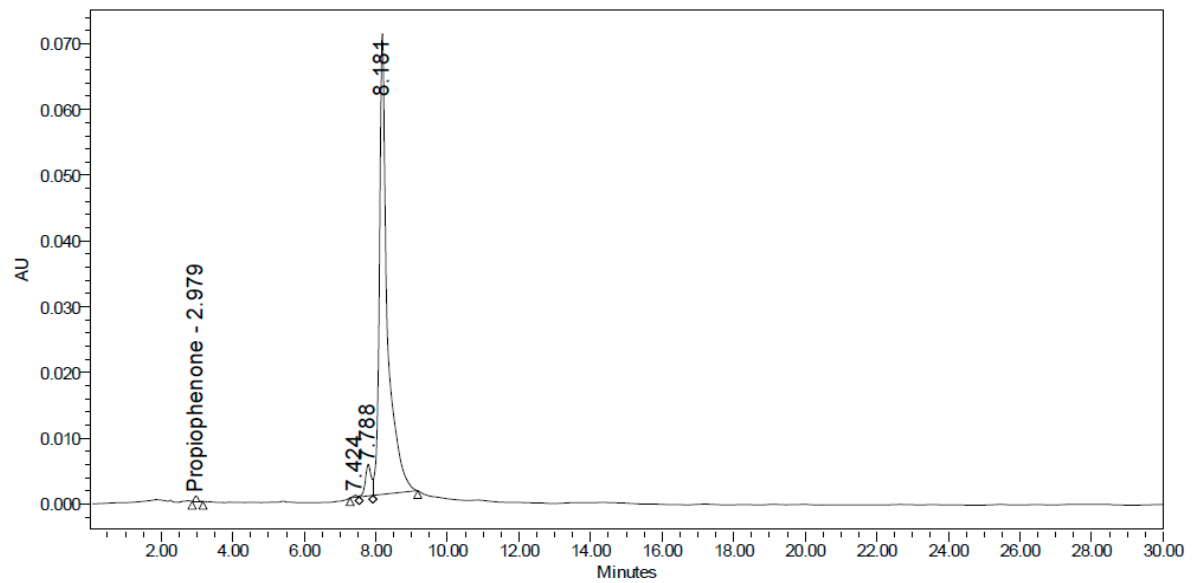


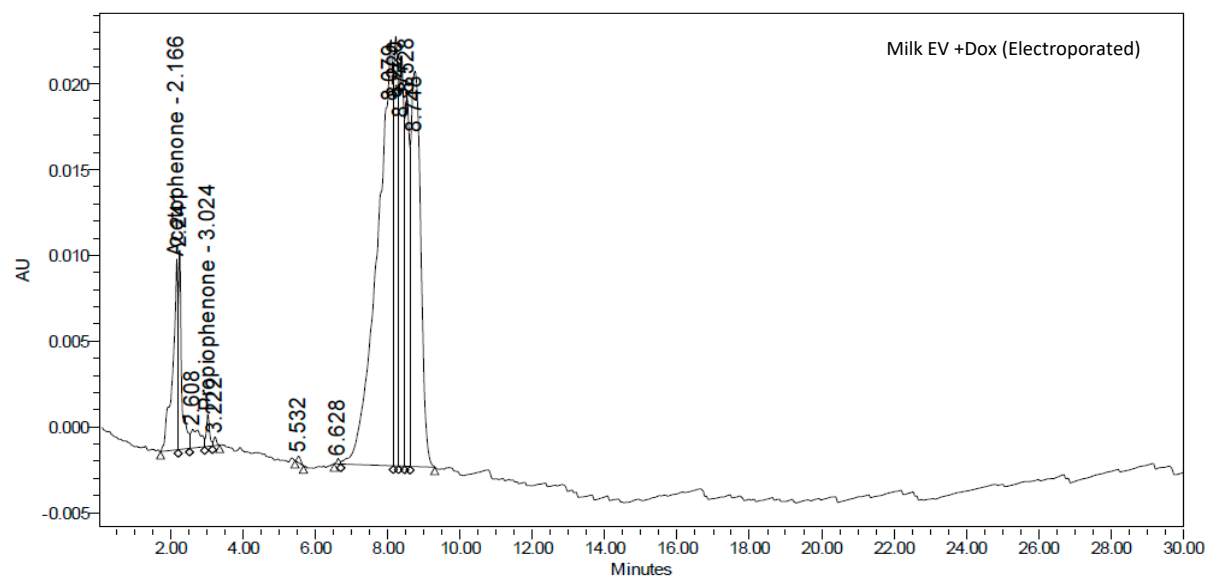
**Dox Standard
curve**



Supp Figure S2a: Serially diluted Dox samples were analysed by HPLC to obtain the standard curve and unknown concentration of Dox from loaded EV samples were calculated using the straight-line equation. Interpolation of unknown Dox was performed on GraphPad Prism 9 software.

(b) Representative Dox peaks obtained by HPLC





Supp Figure S2b: Representative doxorubicin peaks were obtained by HPLC analysis of Dox alone and Dox-loaded MSC EVs and milk EVs (lysed).