

Supporting Information

Modified Linear Peptides Effectively Silence STAT-3 in Breast Cancer and Ovarian Cancer Cell lines

Dindyal Mandal ^{1,2}, Sandeep Lohan ¹, Muhammad Imran Sajid ^{1,3}, Abdulelah Alhazza ^{1,4}, Rakesh Kumar Tiwari ^{1,*}, Keykavous Parang ^{1,*} and Hamidreza Montazeri Aliabadi ^{1,*}

¹ Center for Targeted Drug Delivery, Department of Biomedical and Pharmaceutical Sciences, Chapman University School of Pharmacy, Harry and Diane Rinker Health Science Campus, Irvine, CA 92618, USA; dmandal@kiitbiotech.ac.in (D.M.); lohan@chapman.edu (S.L.); msajid@chapman.edu (M.I.S.); alhazza@chapman.edu (A.A.)

² School of Biotechnology, KIIT Deemed to Be University, Bhubaneswar 751024, India

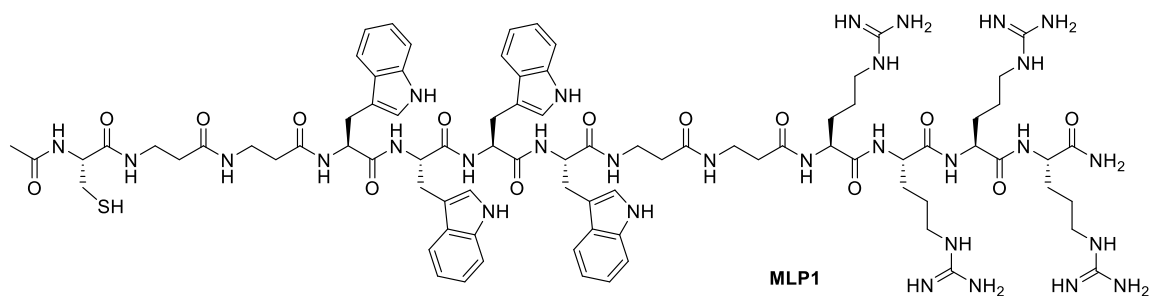
³ Faculty of Pharmacy, University of Central Punjab, Lahore 54000, Pakistan

⁴ Department of Pharmaceutics, Faculty of Pharmacy, Northern Border University, Rafha 76313, Saudi Arabia

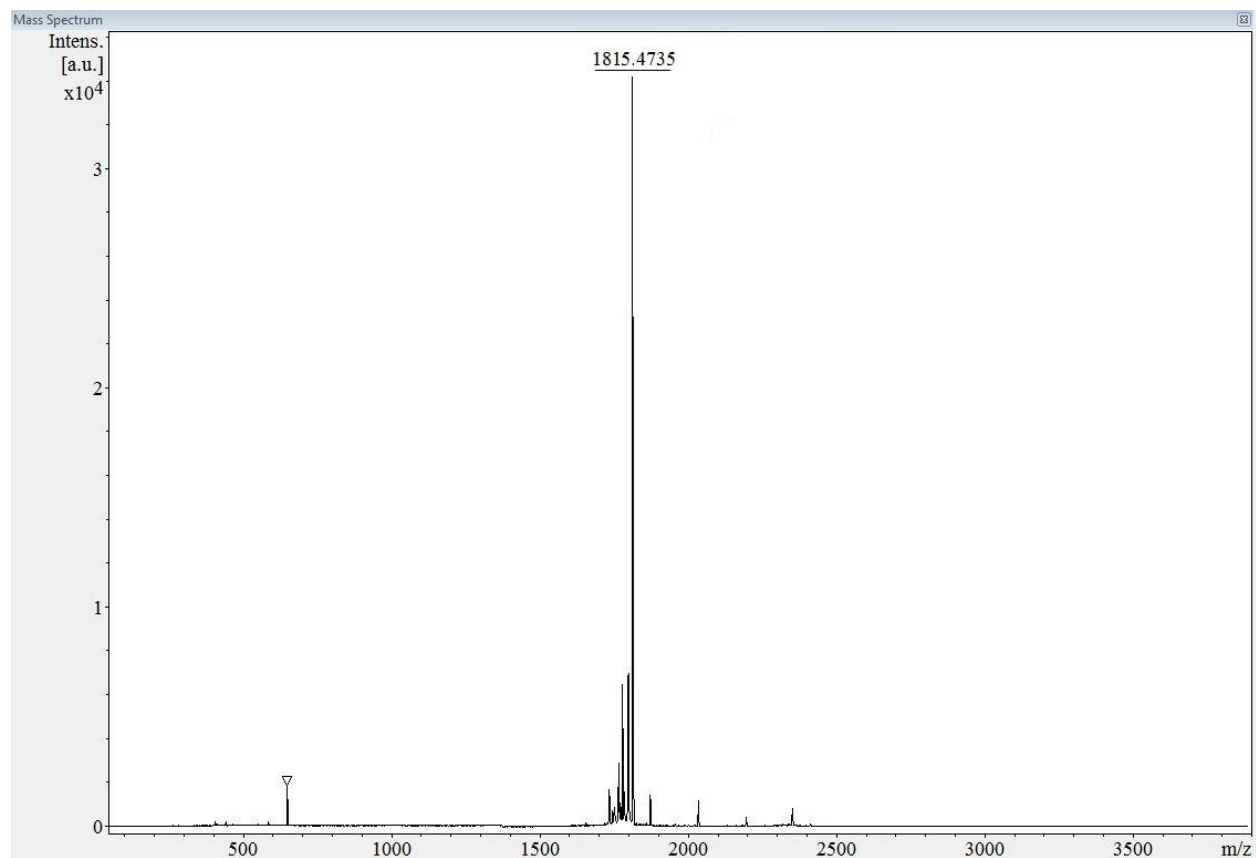
* Correspondence: tiwari@chapman.edu (R.K.T.); parang@chapman.edu (K.P.); montazer@chapman.edu (H.M.A.); Tel.: +1-(714)-516-5483 (R.K.T.); +1-714-516-5489 (K.P.); +1-714-516-5492 (H.M.A.); Fax: +1-(714)-516-5481 (R.K.T.) & (K.P.) & (H.M.A.)

Supplementary Figure S1. Mass Spectra of Synthesized Peptides.

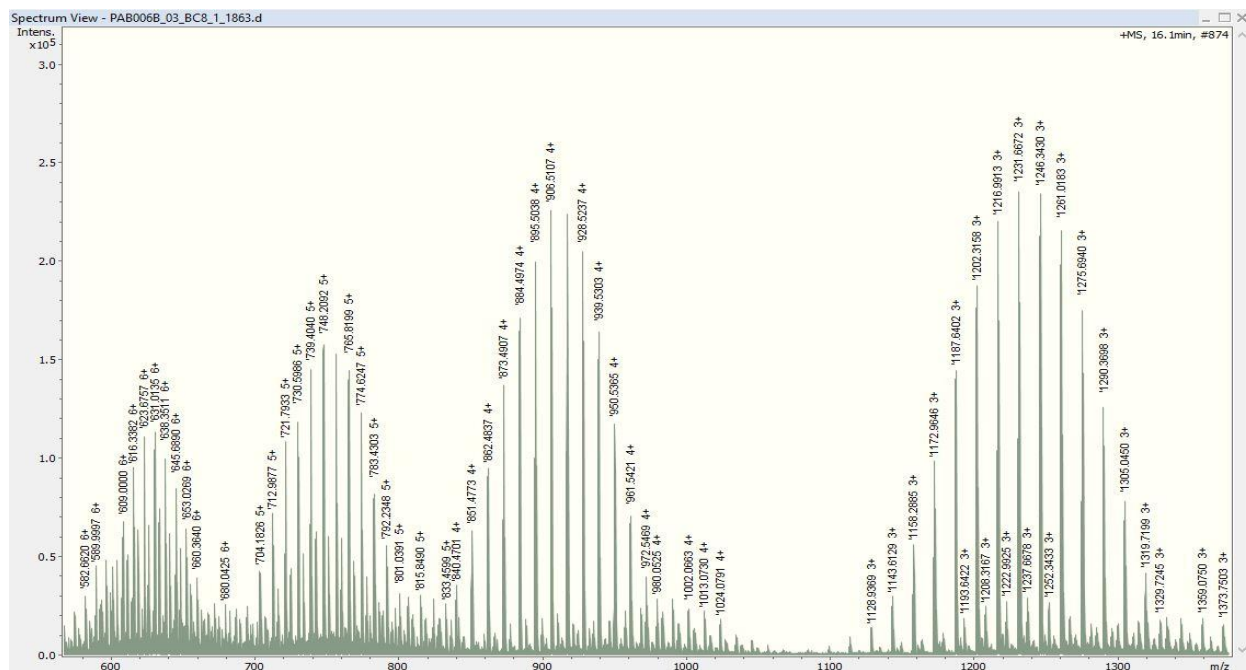
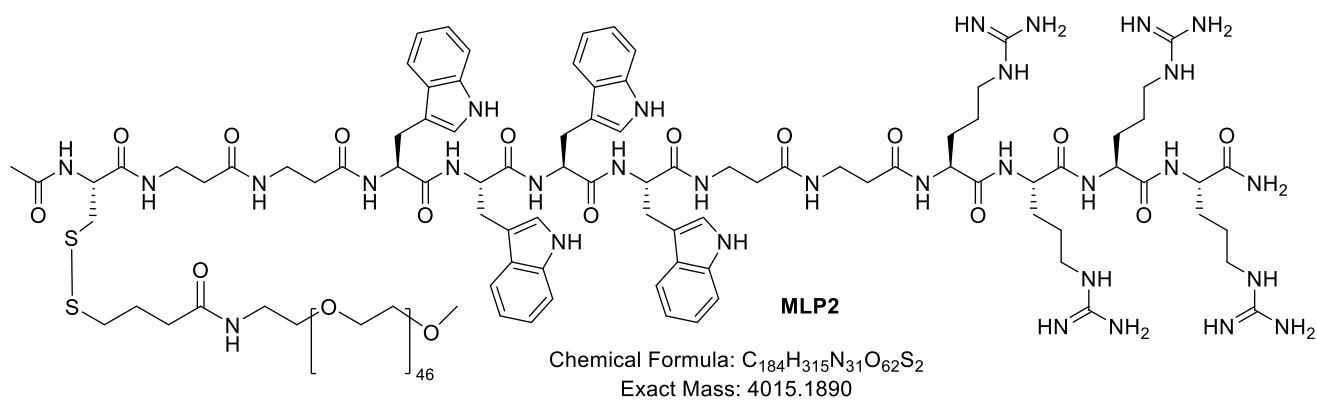
A. MLP1



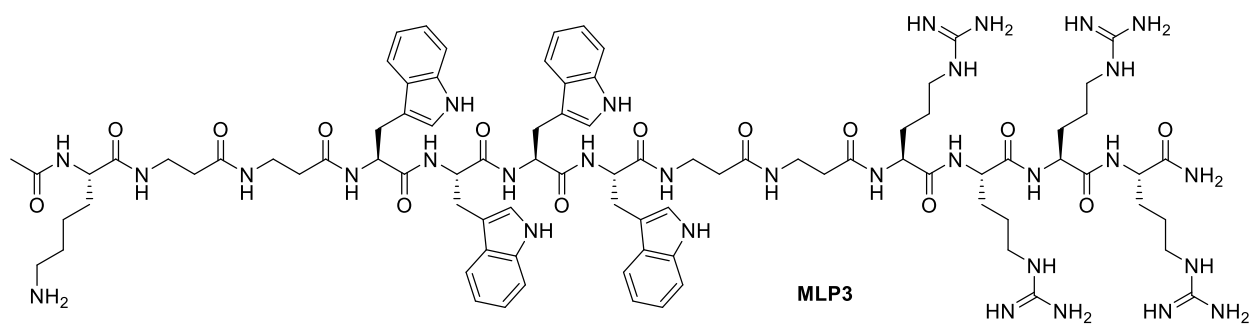
Chemical Formula: $C_{85}H_{118}N_{30}O_{14}S$
Exact Mass: 1814.9164



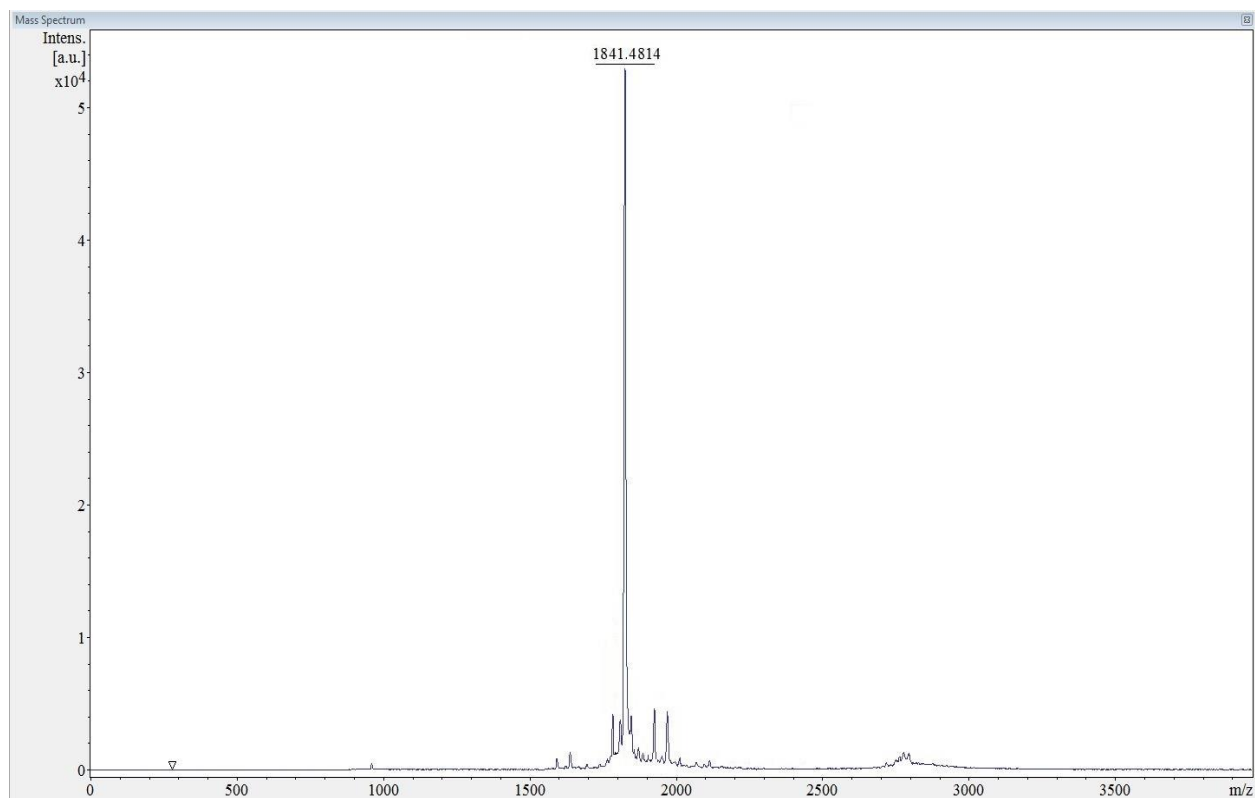
B. MLP2



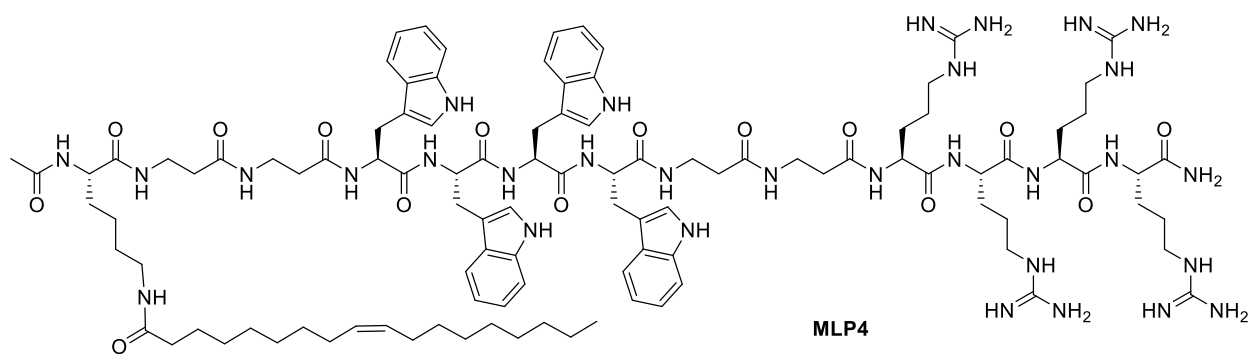
C. MLP 3



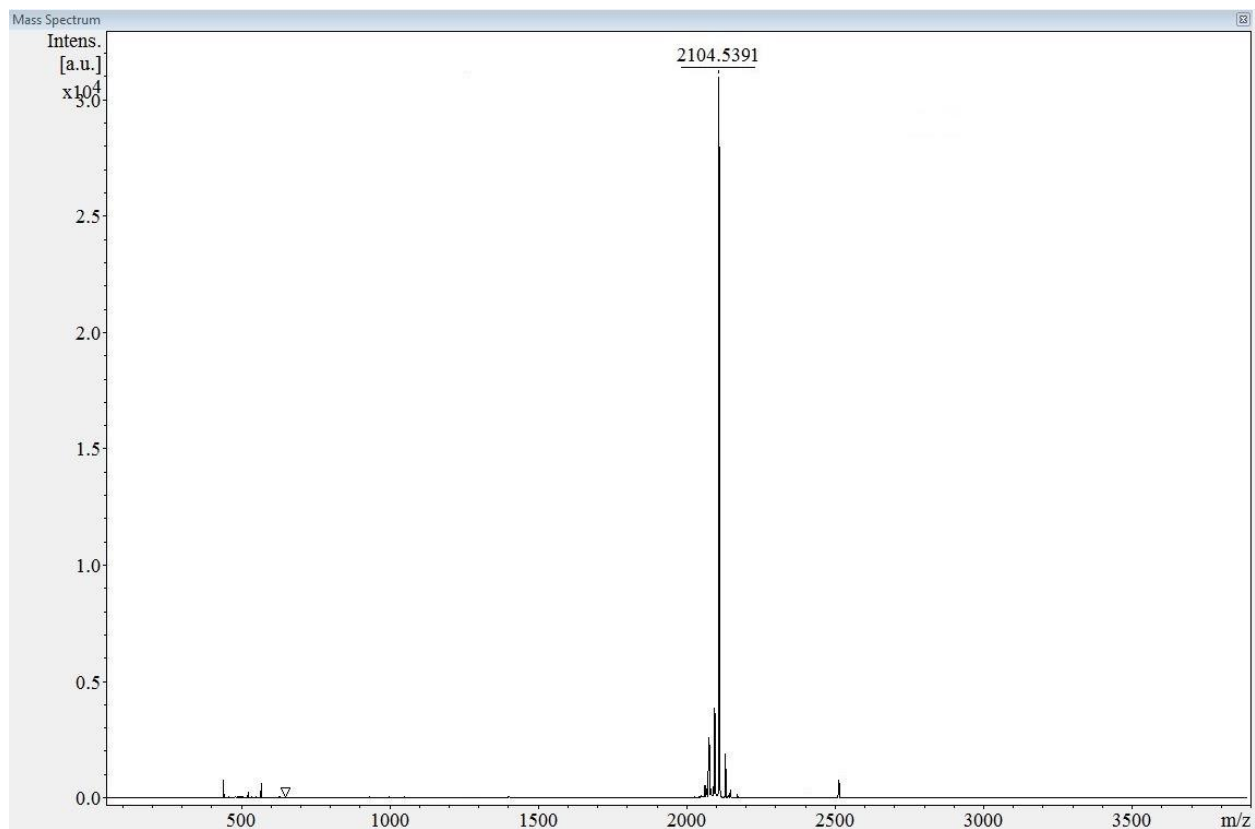
Chemical Formula: $C_{88}H_{125}N_{31}O_{14}$
Exact Mass: 1840.0022



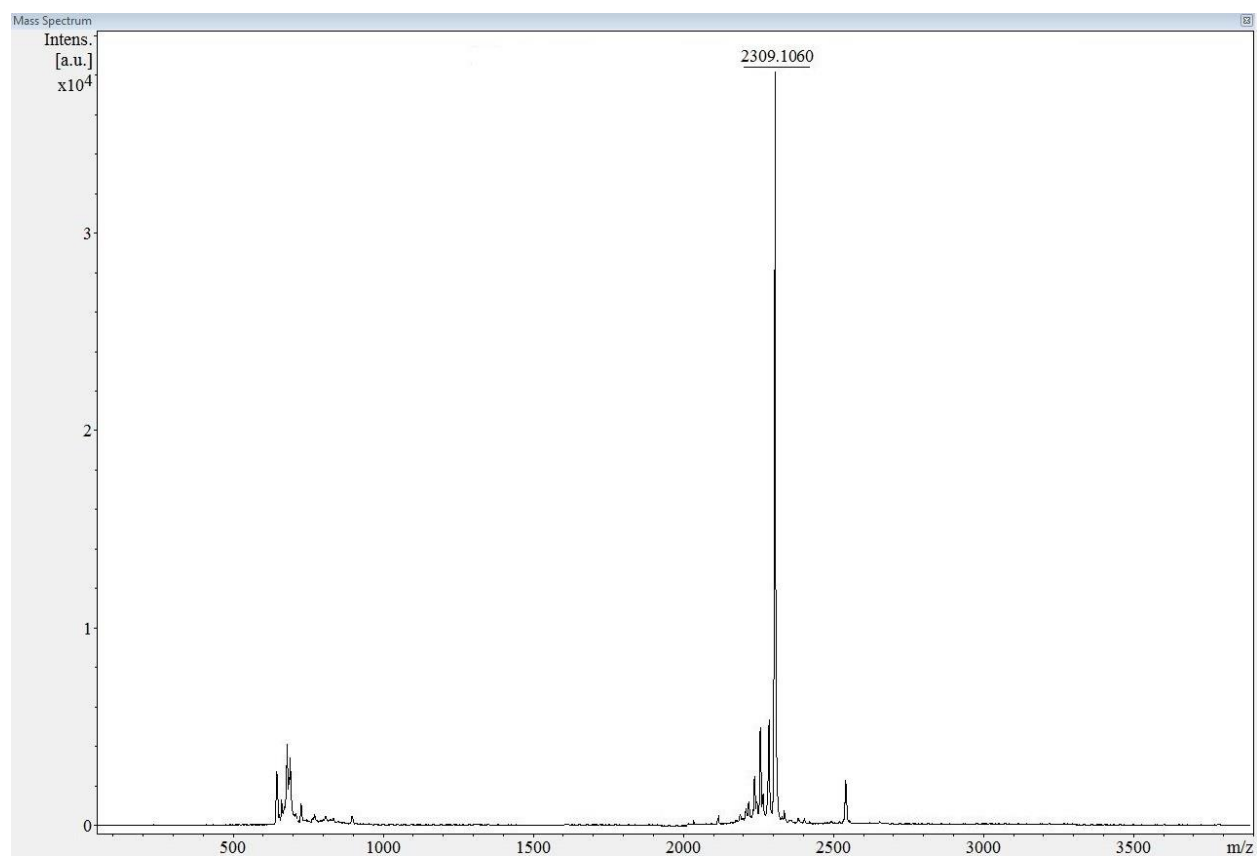
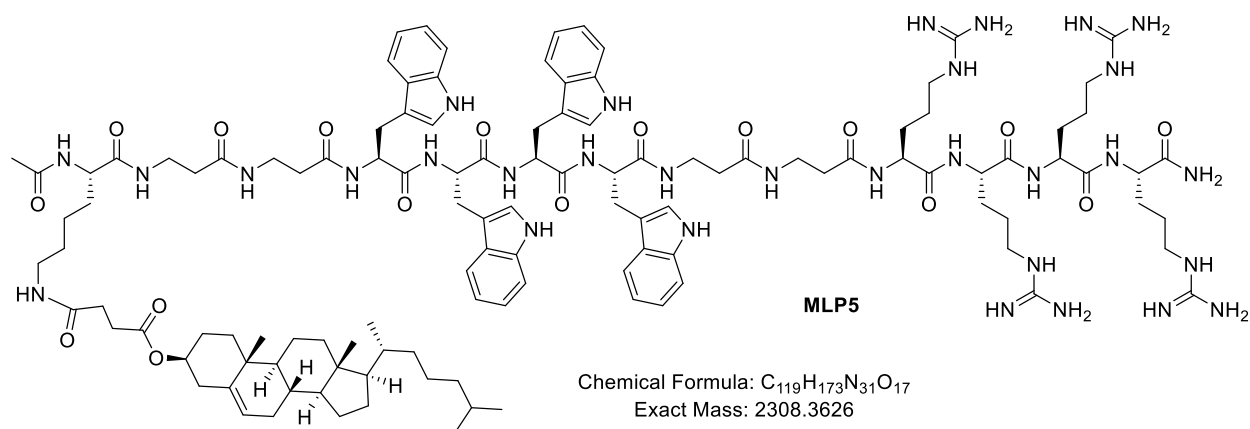
D. MLP4



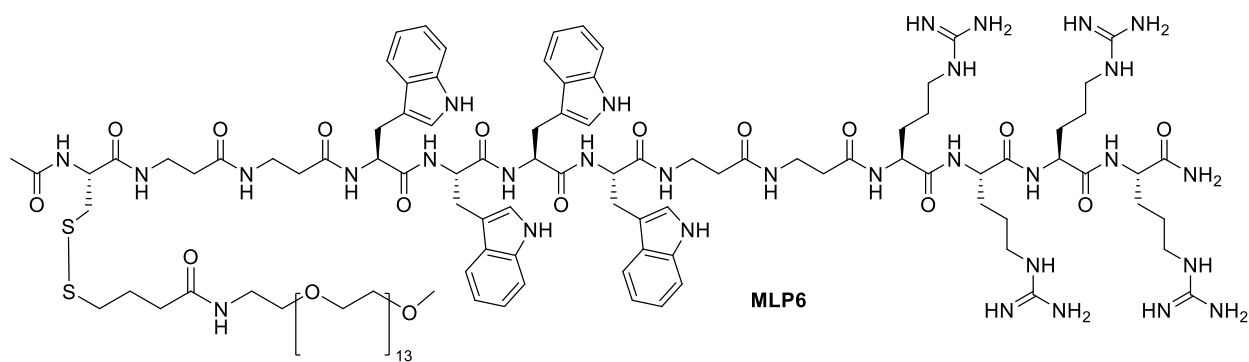
Chemical Formula: $C_{106}H_{157}N_{31}O_{15}$
Exact Mass: 2104.2475



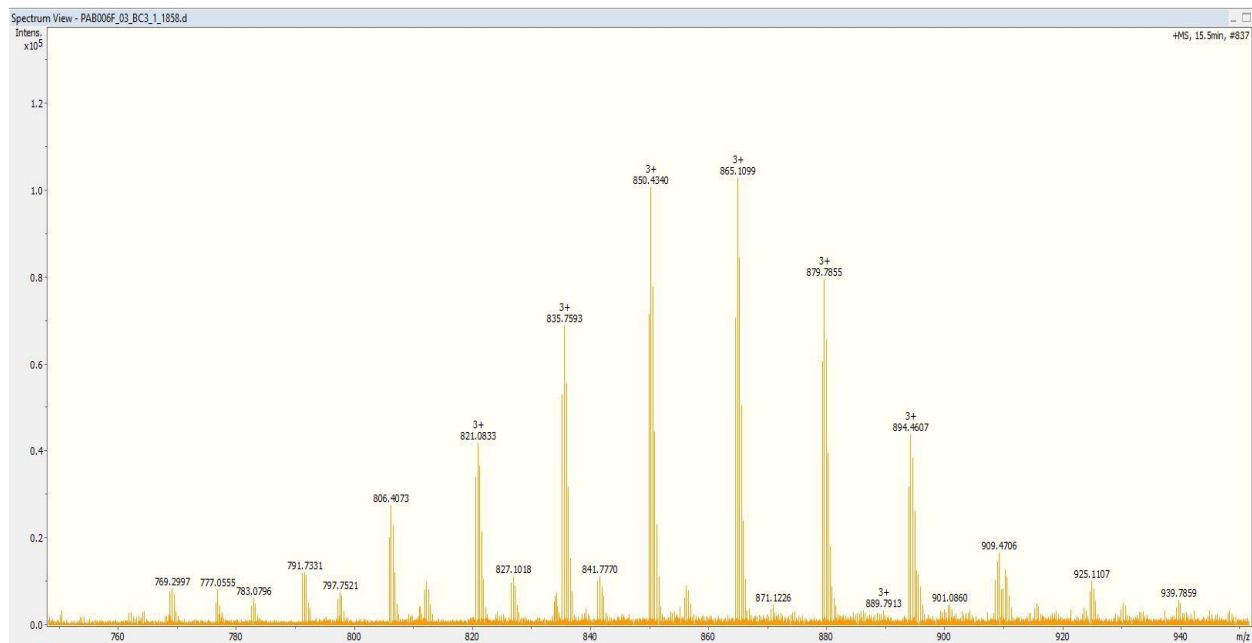
E. MLP5



F. MLP6

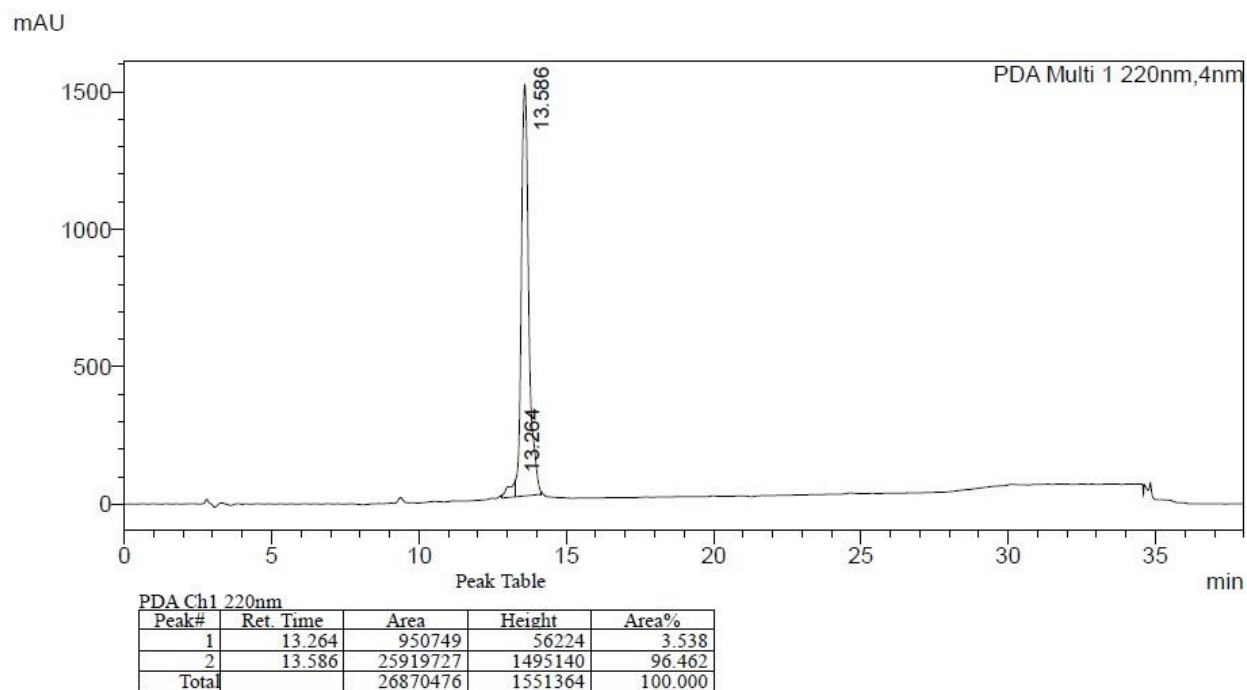


Chemical Formula: $C_{118}H_{183}N_{31}O_{29}S_2$
Exact Mass: 2562.3239

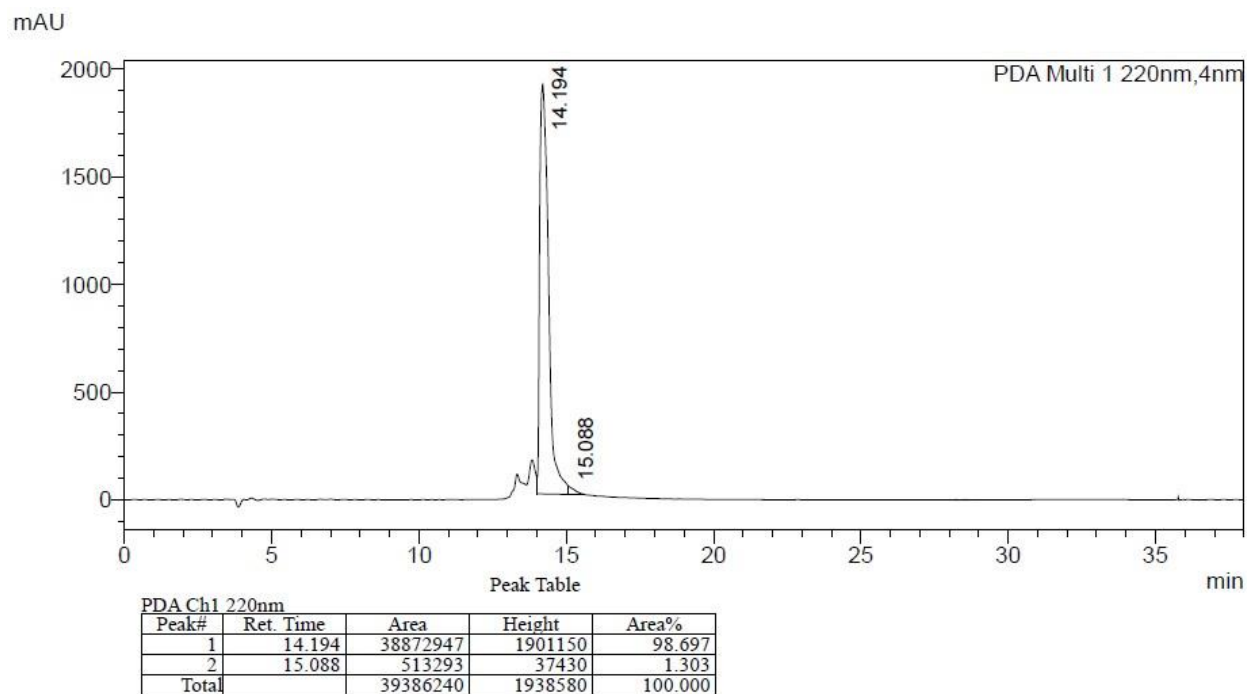


Supplementary Figure S2. HPLC data for non-PEGylated Synthesized Peptides.

MLP-1

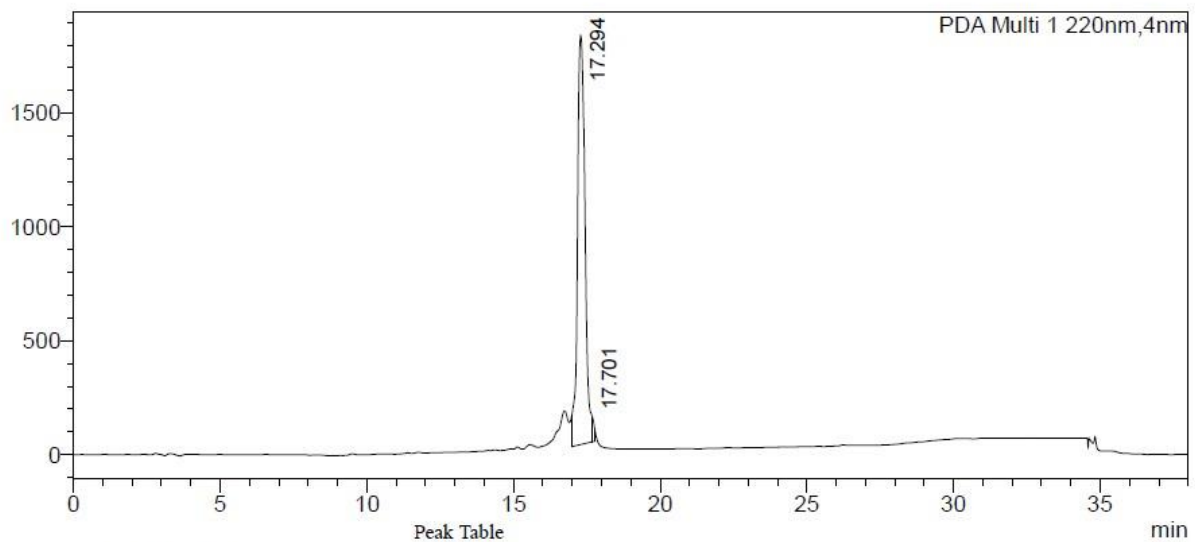


MLP-3



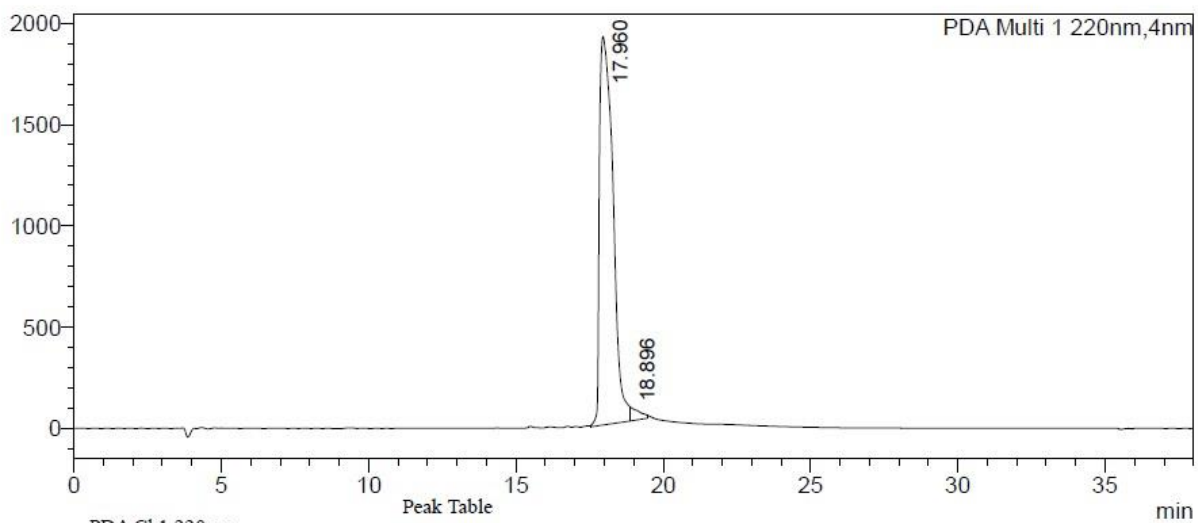
MLP-4

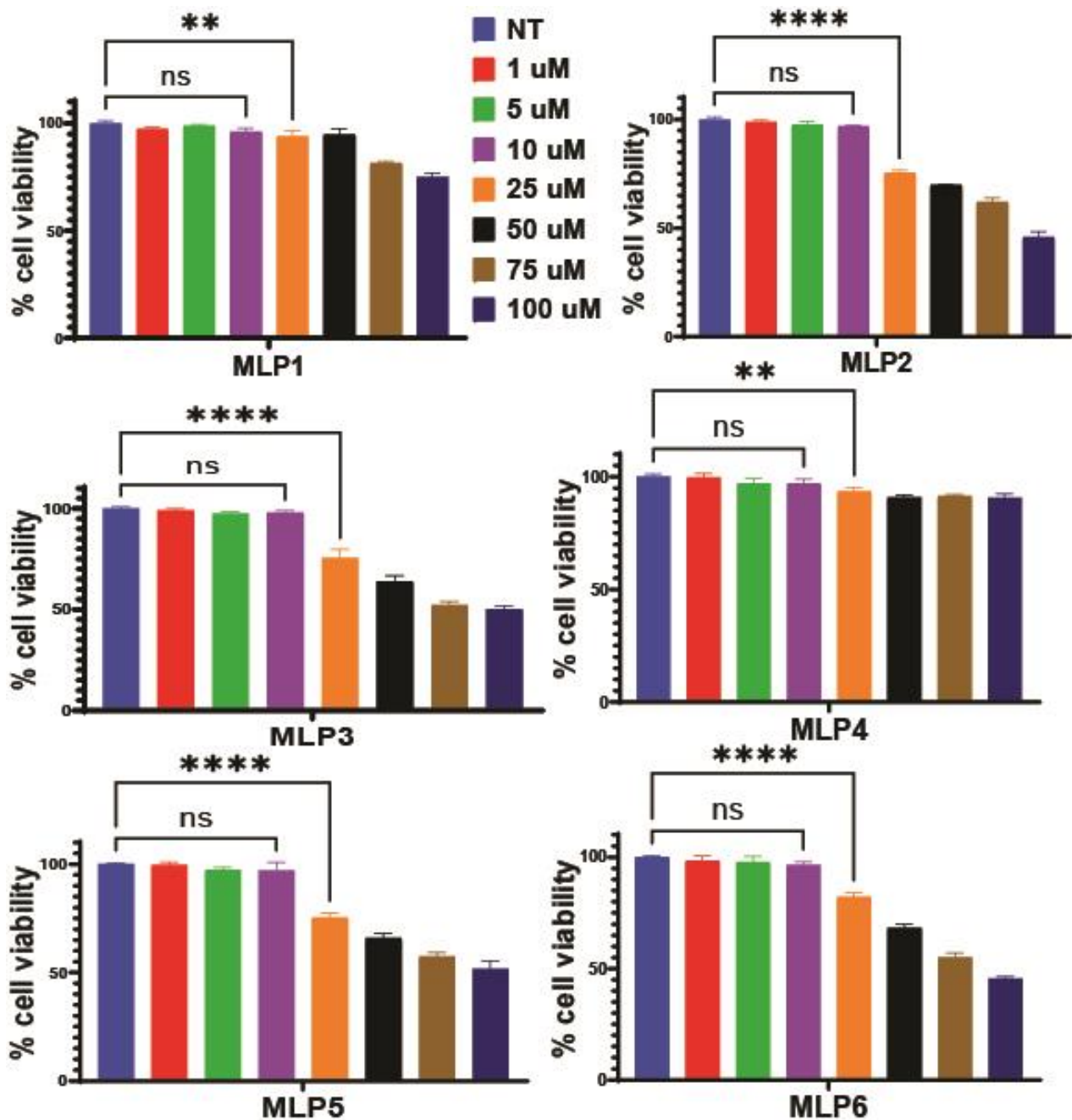
mAU



MLP-5

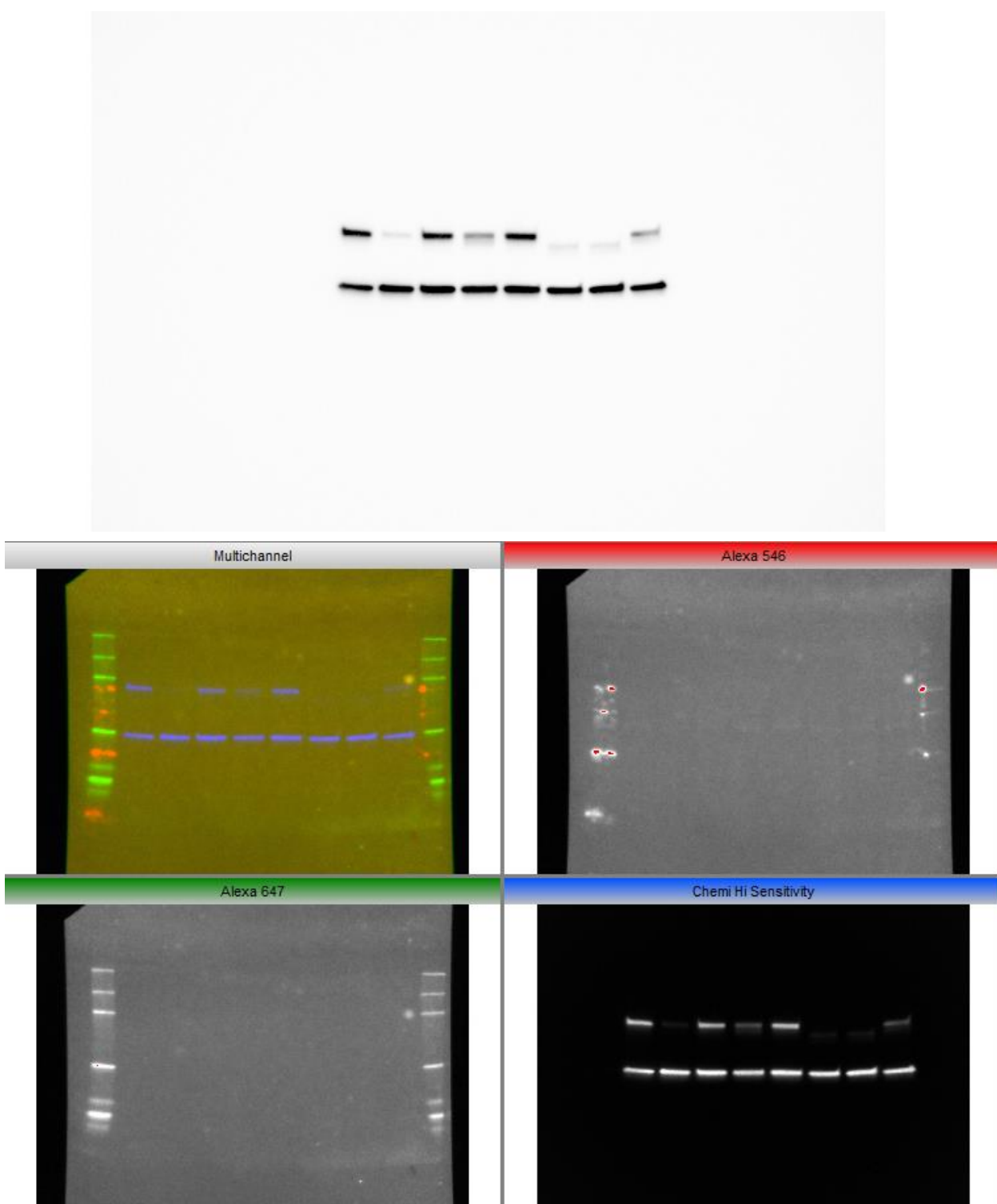
mAU



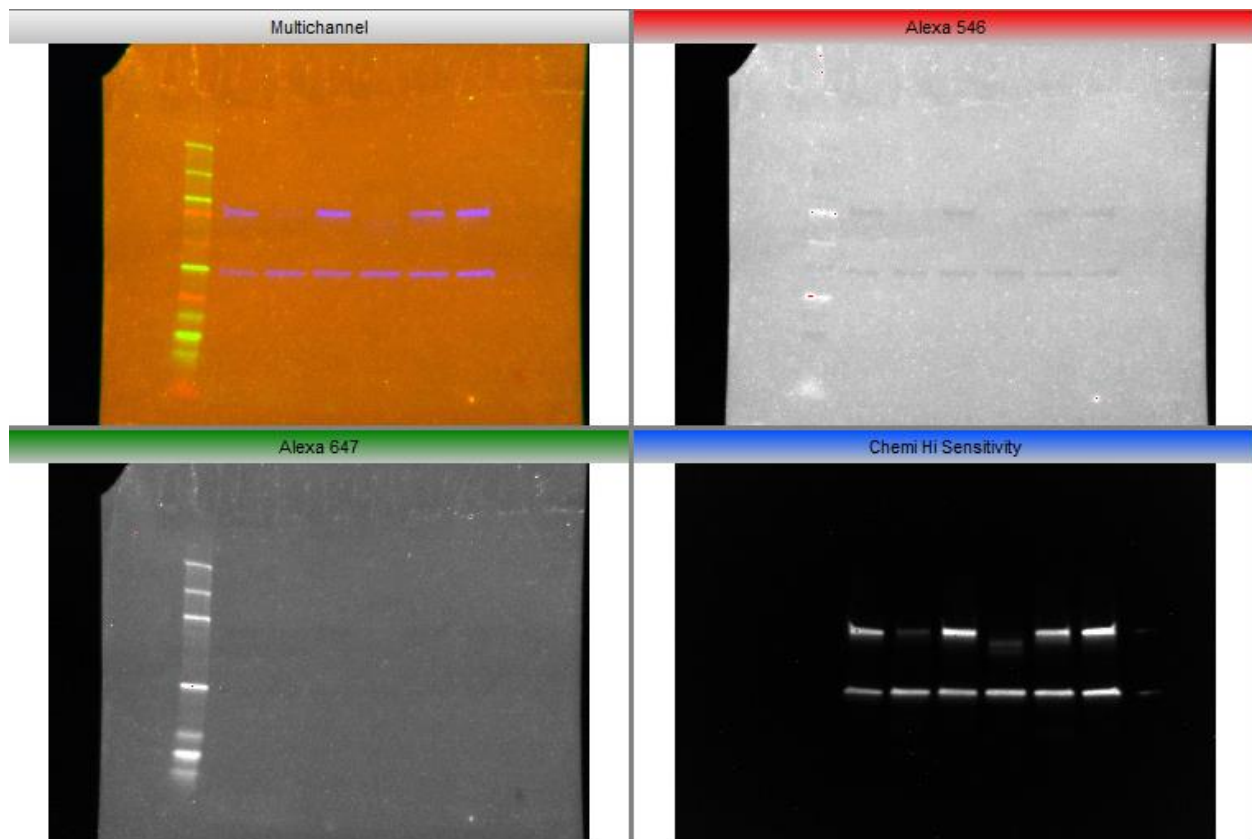


Supplementary Figure S3. Cytotoxicity of peptides in MDA-MB-231 cells at different concentrations (incubation time: 48 h; Graphs represent mean normalized values (based on No Treatment or NT group; $n = 3$). Error bars indicate standard deviation. ns means non-significant (p -value > 0.05 , ** means p -value < 0.001 , and **** means p -value < 0.0001)

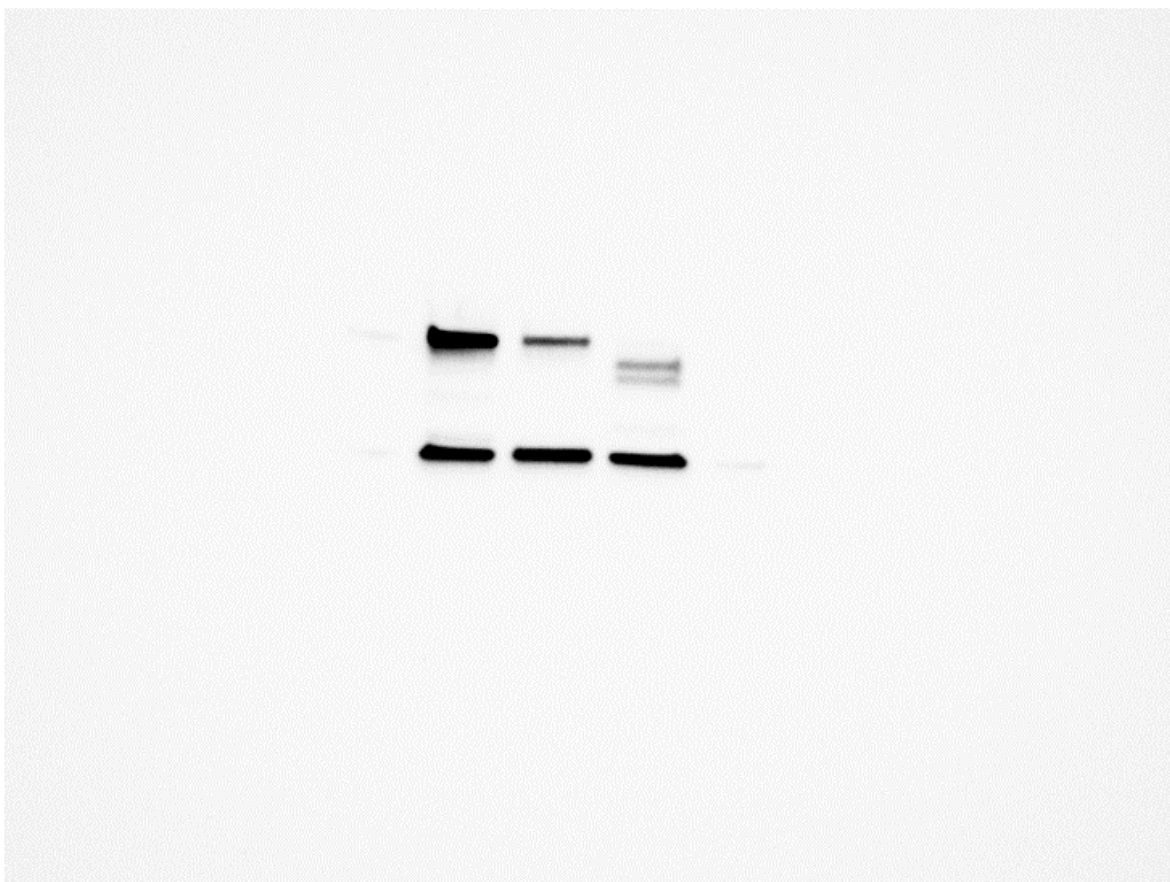
Supplementary Figure S4. The complete (unedited) Western blot images provided in the manuscript.



A) Figure 10A



B) Figure 10B



C) Figure 10C