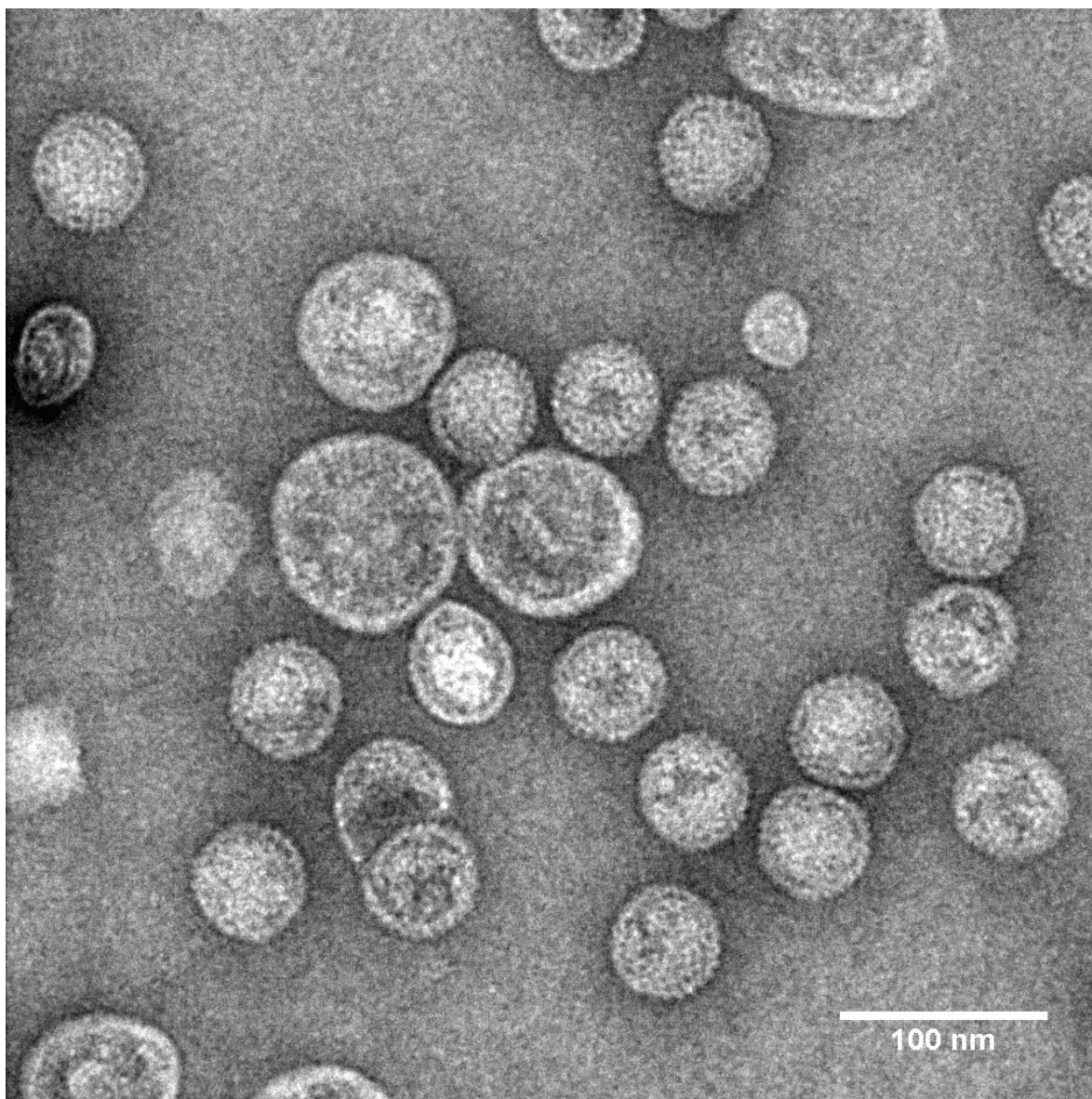




Supplementary Material: Asparaginase-Phage P22 Nanoreactors: Toward a Biobetter Development for Acute Lymphoblastic Leukemia Treatment



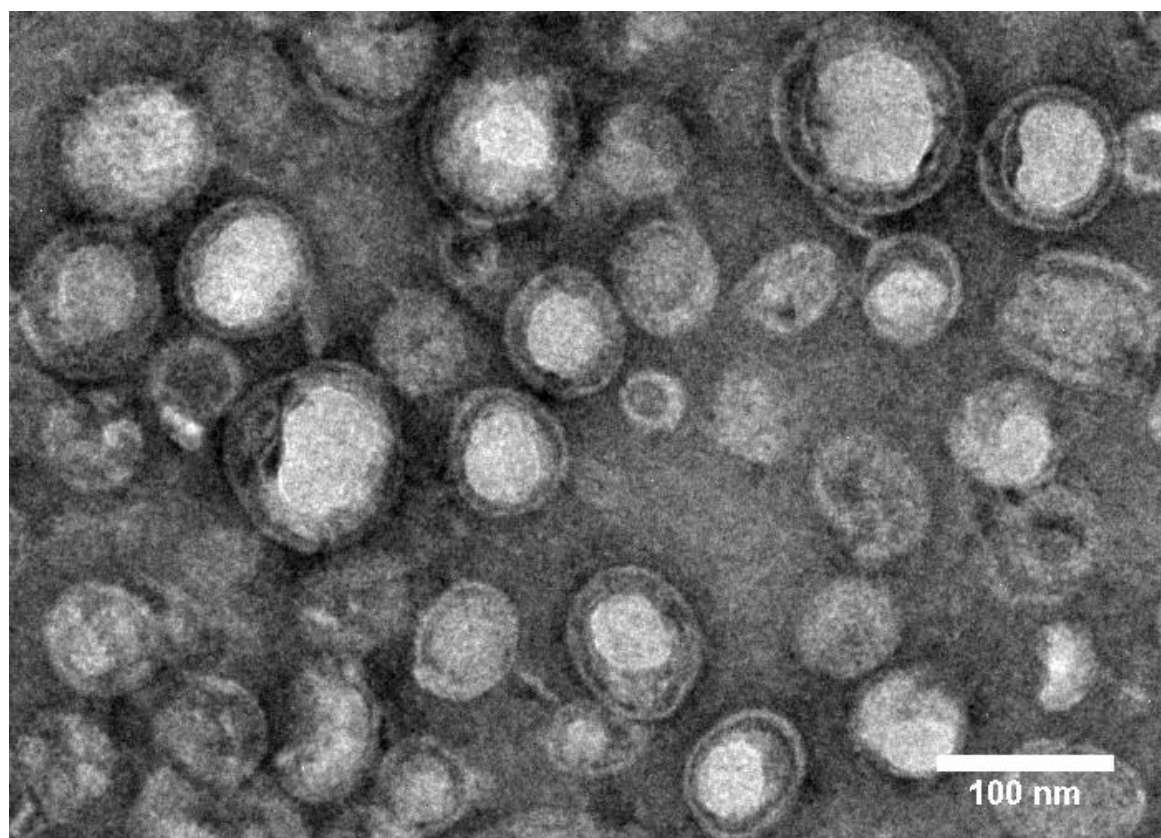


Figure S1. Additional TEM images of ASNase-P22 nanoreactors.

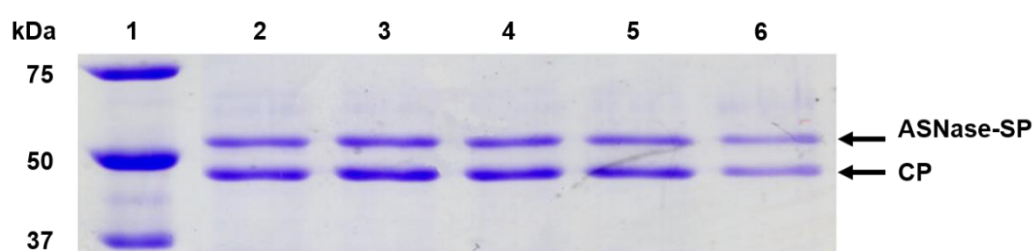


Figure S2. SDS-PAGE of purified samples of ASNase-P22 nanoreactors. Image used for densitometric analysis. Lane 1, molecular weight marker. Lanes 2-6 representative samples of ASNase-P22 from different chromatograms. Black arrows point out the ASNase-SP and CP bands at 53 kDa and 47 kDa, respectively.