

Supplementary Information

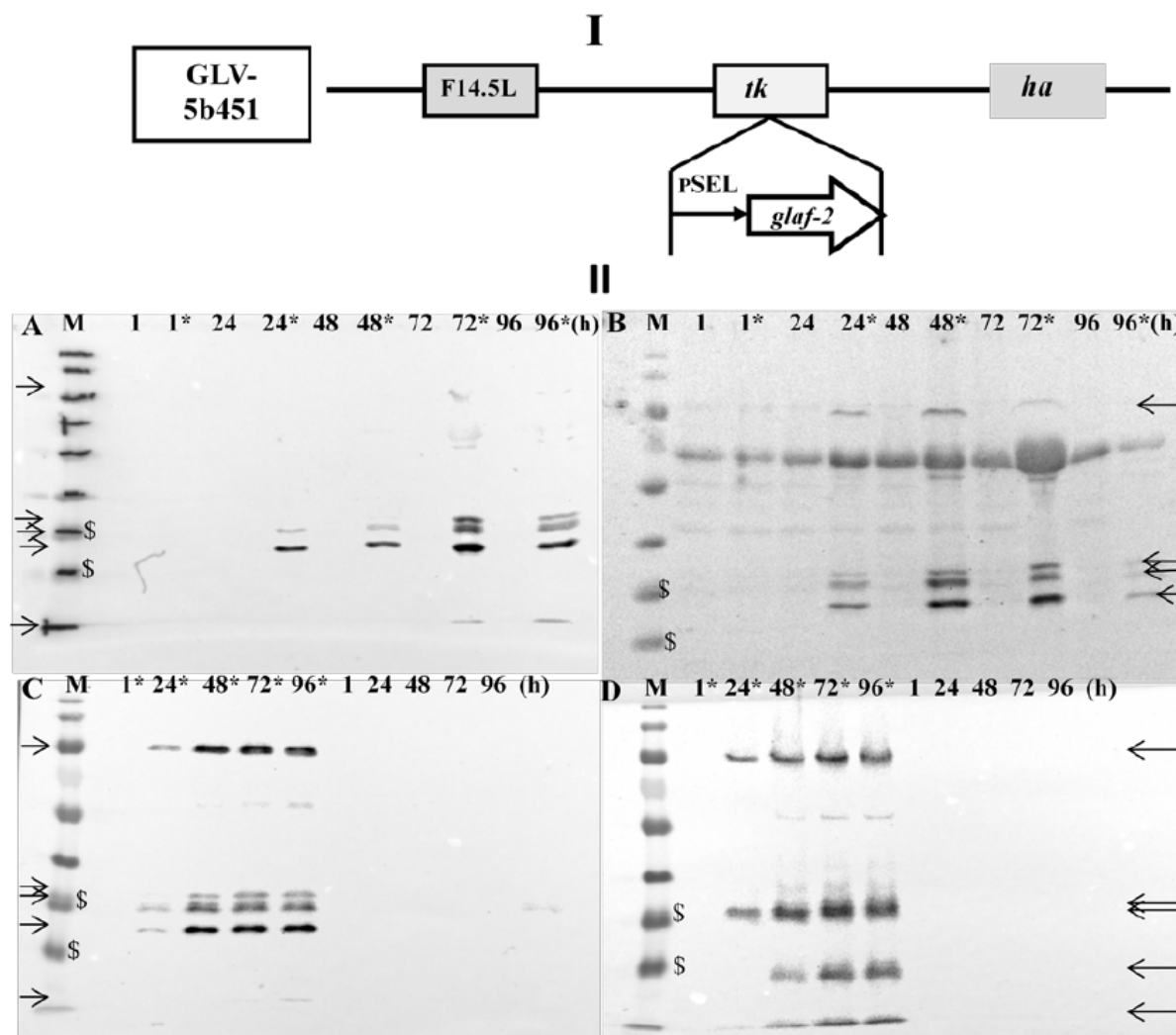


Figure S1. Expression of vaccinia virus mediated proteins in canine cancer cells. **(I)** Schematic representation of GLV-5b451. F14.5L: *vaccinia virus* F14.5L *gene* product; *tk*: thymidine kinase; *ha*: hemagglutinin; pSEL: synthetic early-late promoter; **(II)** Expression of vaccinia virus specific proteins in different canine cancer cells: **(A)** MTH52c; **(B)** ZMTH3; **(C)** CT1258 and **(D)** STSA-1. Western blot analysis of GLV-5b451-infected (MOI of 1.0; lines marked by *) or uninfected canine cancer cells. Protein fractions from cell lysates were isolated at 1, 24, 48, 72 and 96 h post virus infection and separated by SDS-PAGE. Western blot analysis was performed as described in material and methods. The positions of virus specific proteins are marked by black arrows. M: PageRuler Prestained Protein Ladder # 26616 (Thermo Scientific, Bonn, Germany). The positions of the 35 and 25 kDa proteins are marked by \$ symbol.