

SUPPLEMENTARY MATERIAL

Figure S1. Immunization and blood sampling schedule

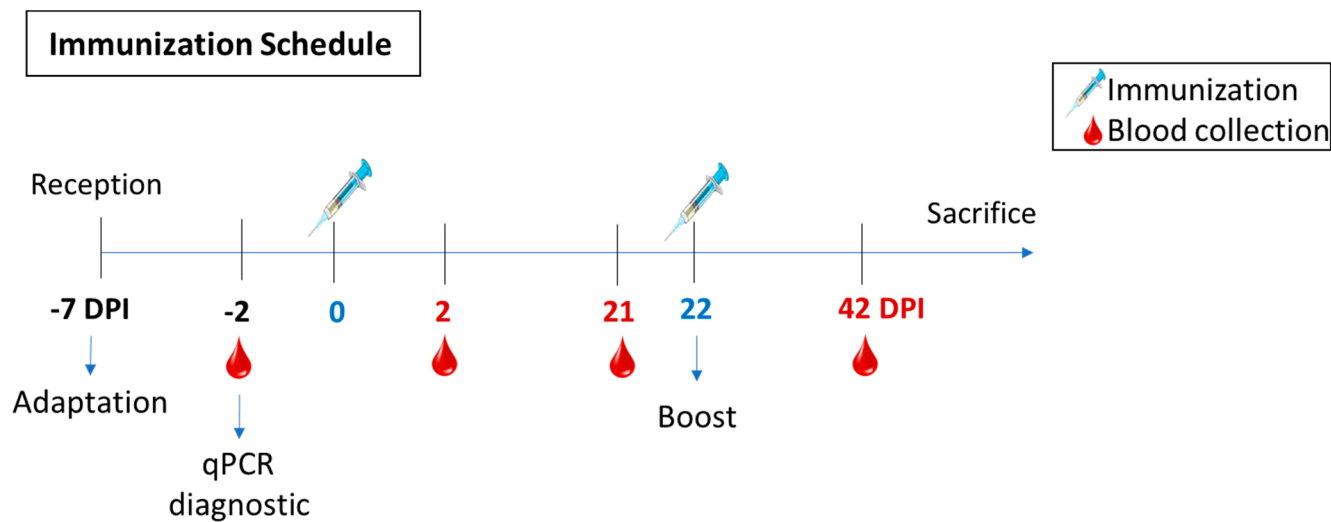
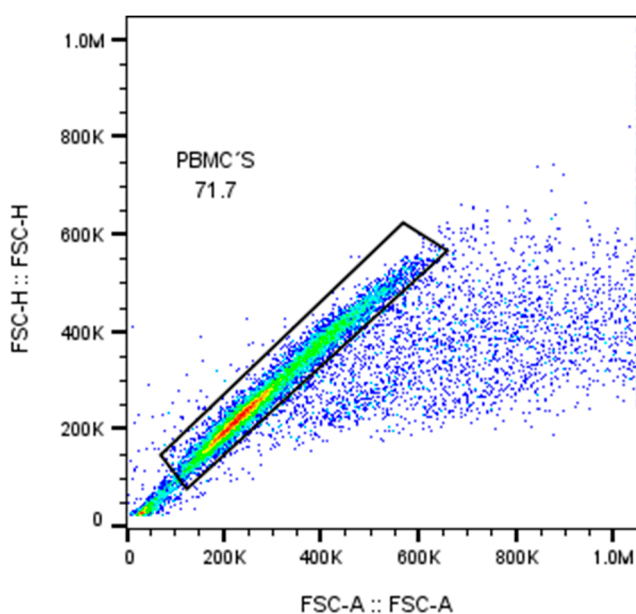
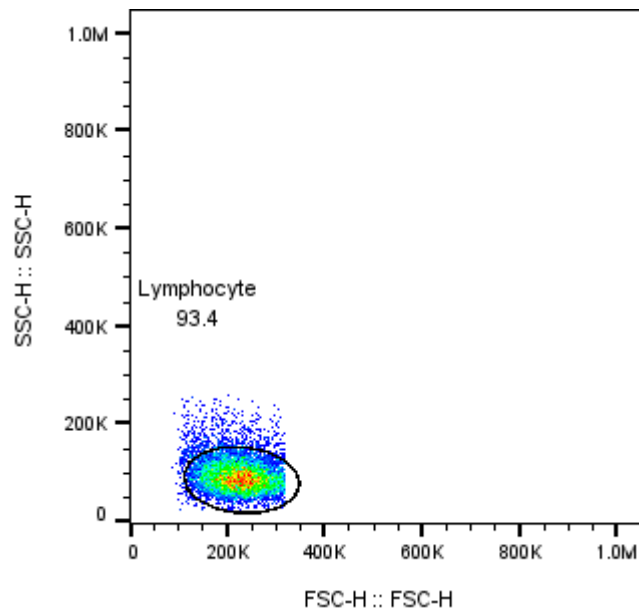


Figure S2. Immunophenotyping CD3⁺/CD8⁺ and CD8⁺/CD44⁺ cells population from lymphocytes.

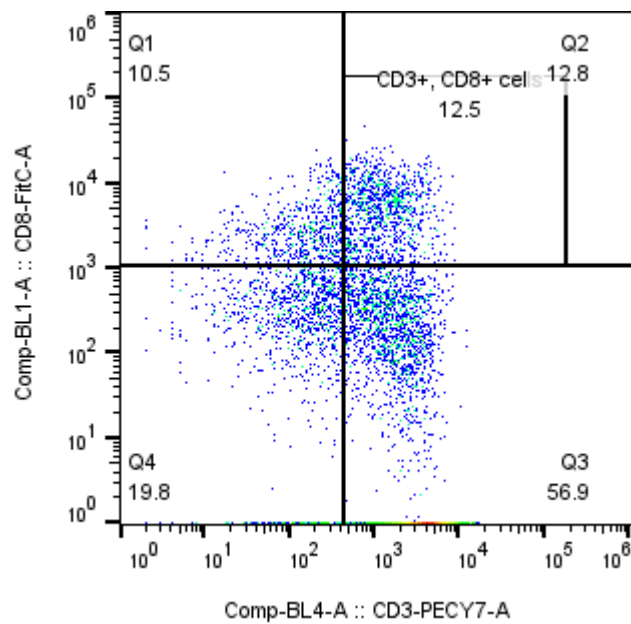
Selection of single cells from PBMC



Lymphocyte populations from singlets were separated based on their size and complexity.



CD3+/CD8+ cells from the total lymphocyte population.



CD8+/CD44+ cells from the total lymphocyte population.

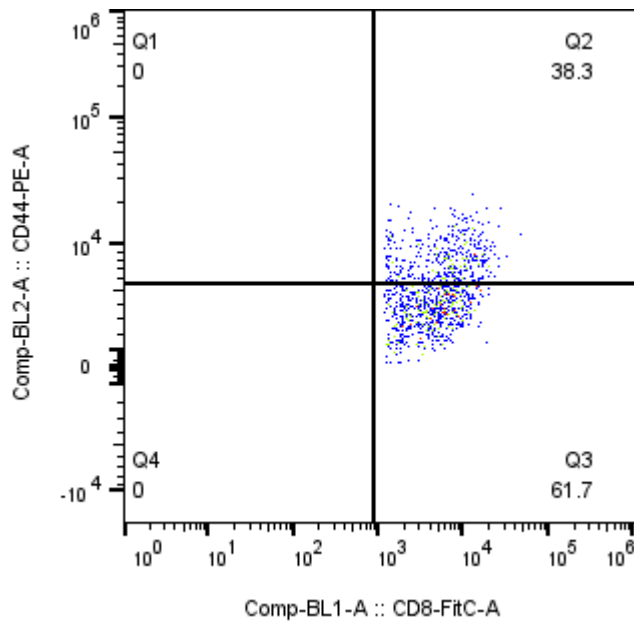
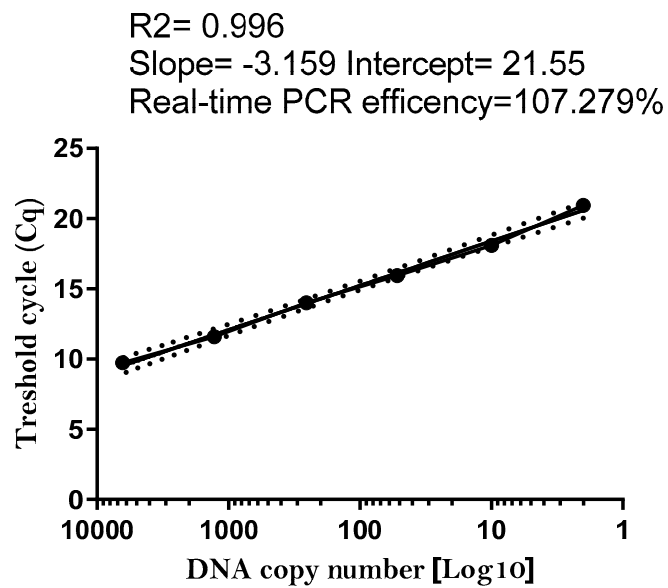


Figure S3. Standard curve for PRRSV quantification.



Standard curve for the quantification of viral copy number using qPCR.

We used six-fold dilutions ranging from 6.4×10^9 to 2.0×10^6 copies, based on Log10 per μl .

These dilutions were plotted with the dilution factor on the X-axis and the quantification cycle (Cq) values on the Y-axis.

Figure S4. Viability of the lymphocytes after cryopreservation assessed using MTT assay.

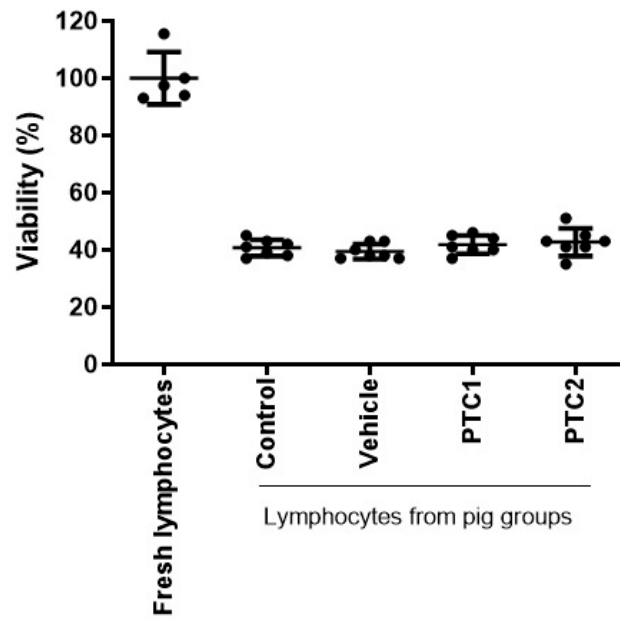


Figure S5. Graphical Representation of qPCR Software Results for the Detection of PRRSV in Experimental Pig Samples.

