

Figure S1

FACS plots measuring SERINC5-iFLAG cell surface levels in cells co-transfected with the indicated *nef* alleles expressed upstream of an IRES2-eGFP cassette to allow exclusive gating of Nef-expressing cells.

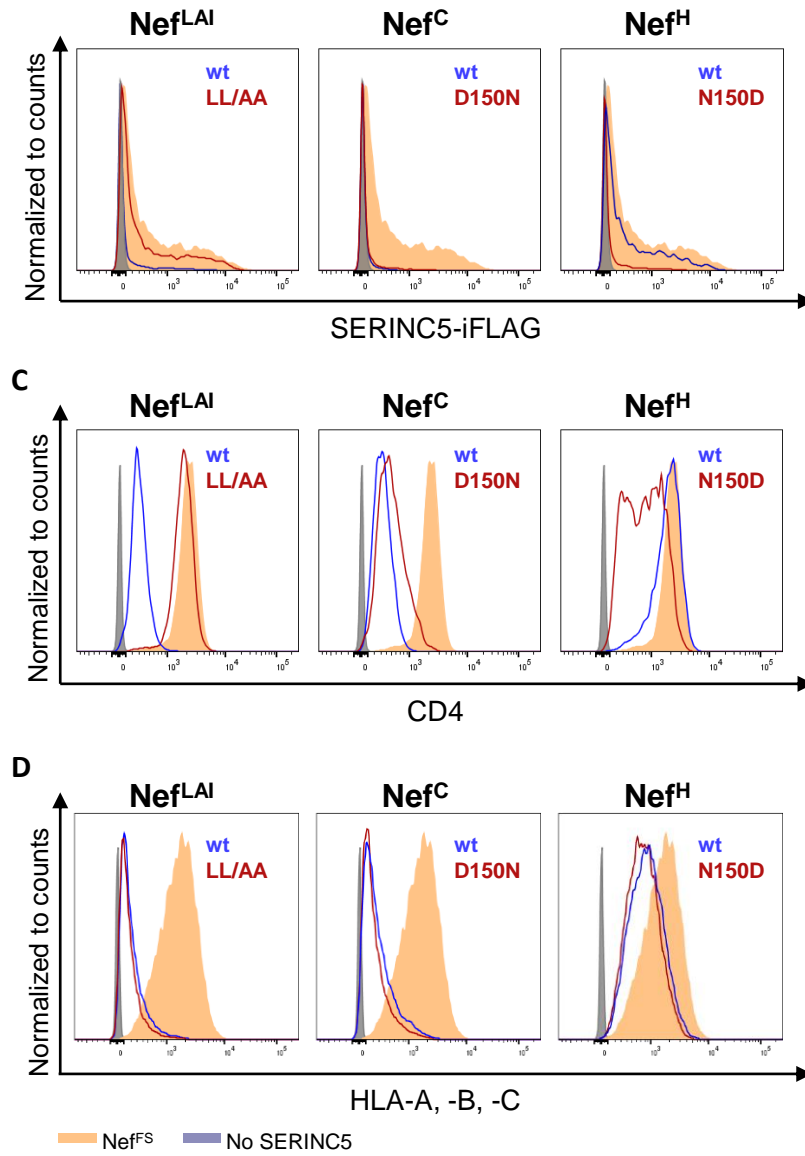


Figure S2

FACS plots measuring SERINC5-iFLAG (a), CD4 (b) and MHC-I (c) cell surface levels in cells expressing the indicated Nef molecules expressed upstream of an IRES2-eGFP cassette to allow exclusive gating of Nef-expressing cells. The well-characterized mutation of the dileucine sorting signal in the context of the Nef^{LAI} protein was also tested as control.

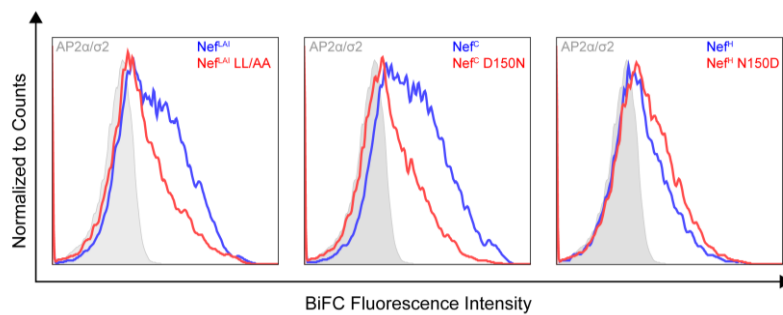


Figure S3

FACs plots measuring mean fluorescence intensity of BiFC signal in cells expressing indicated Nef proteins tagged with Venus N-HA and AP2 α / σ 2 hemicomplex tagged with V5-Venus C-terminal fragment.