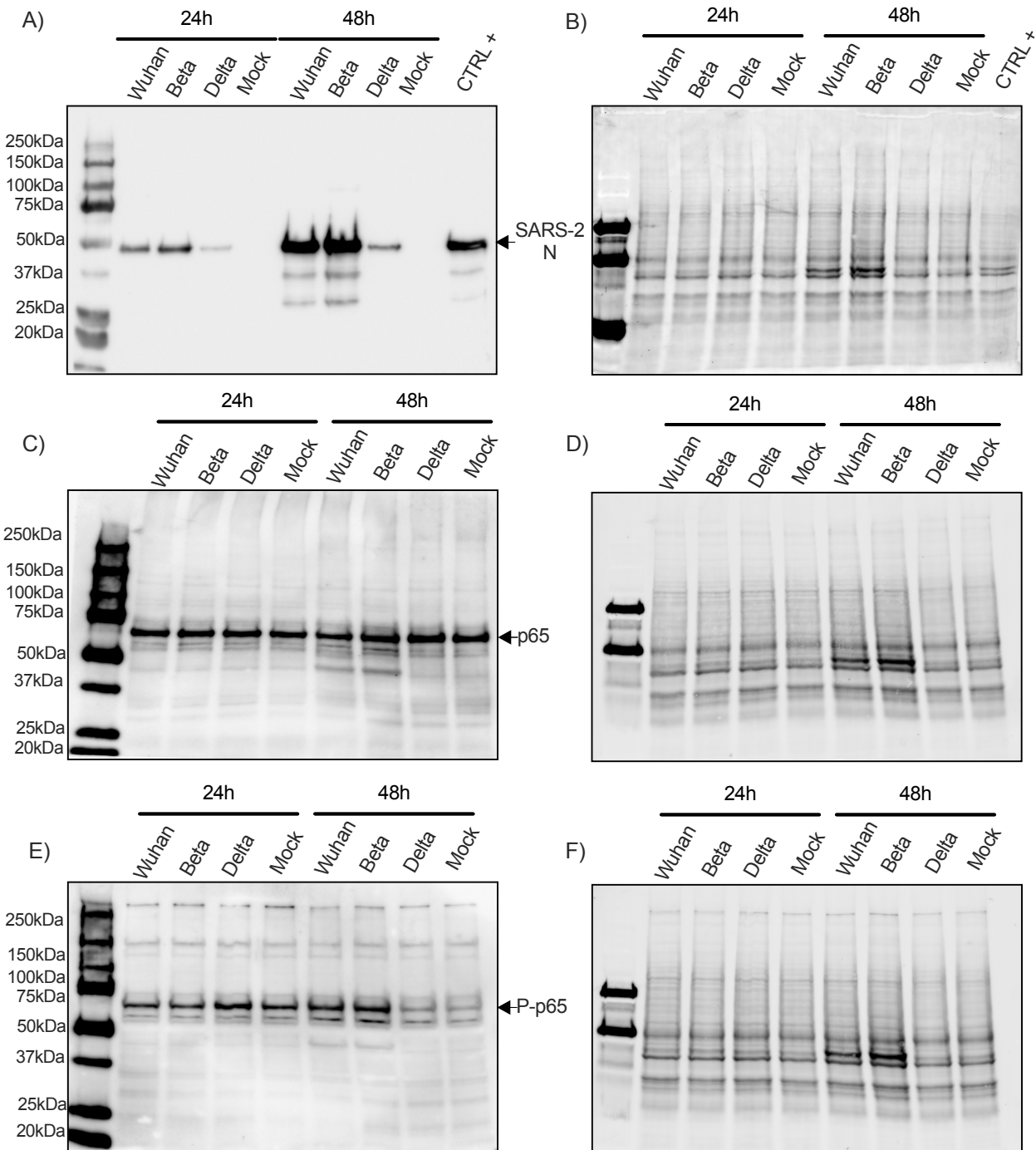


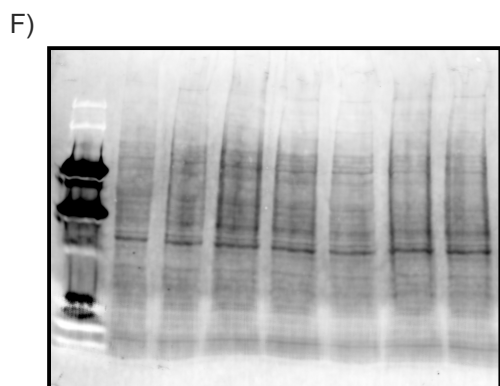
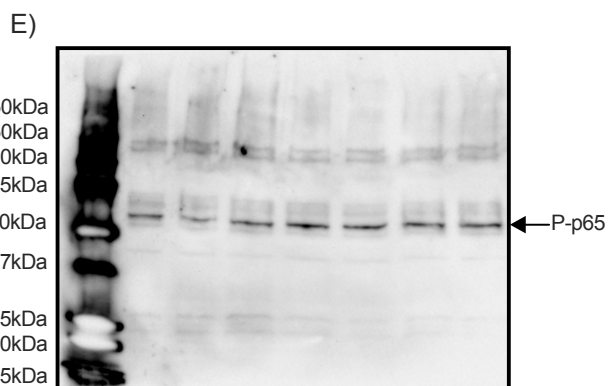
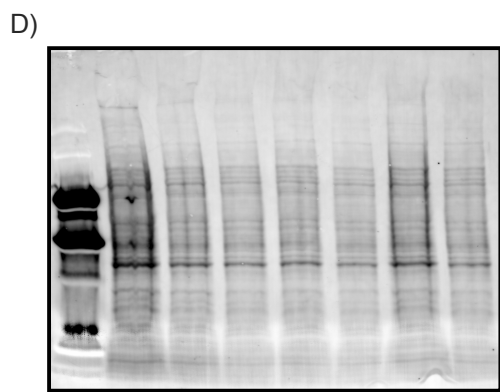
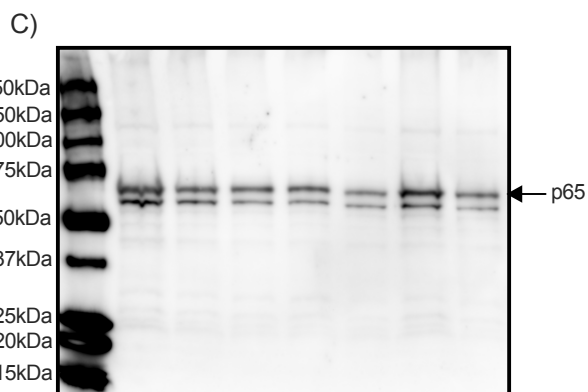
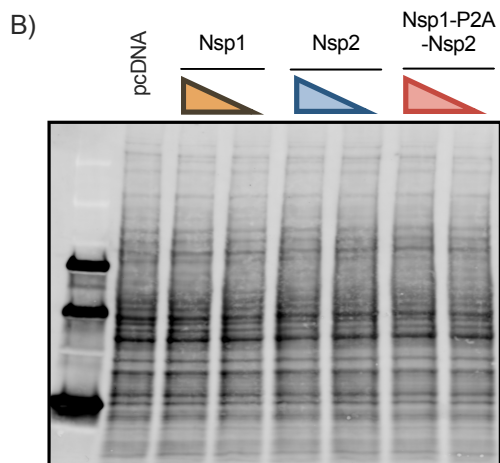
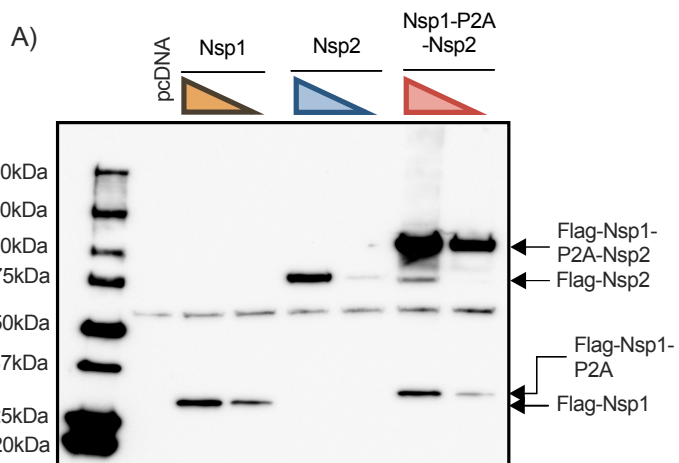
# Supplementary Figure 1



**Figure S1.** Uncropped blots (A, C, D) and Stain-Free blot (B, D, F) corresponding to the relative protein expression level of SARS-CoV-2 N protein (A, B), total p65 subunit (C,D) and phosphorylated p65 (E,F) following 24h or 48h infection with SARS-CoV-2 Whuan-like, Beta or Delta strains.



## Supplementary Figure 2



**Figure S2.** Uncropped blots (A, C, D) and Stain-Free blot (B, D, F) corresponding to the relative protein expression level of Nsp1 or Nsp2 (A, B), total p65 subunit (C,D) and phosphorylated p65 (E,F) following transfection with Nsp1, Nsp2 or polyprotein expression vector.

**Table S1.** Primers used for plasmid construction.

<b>Plasmid construction</b>	<b>Forward (5'-3')</b>	<b>Reverse (5'-3')</b>
pENTR_SARS-CoV-2_Nsp1	CACCATGGGAACCAATTCAGGAGAGCCTTGTCCCT GGTTTC	GGTCTAGATATCTCGAGTGCTTACCCTCCGTTAA GCTCAC
pENTR_SARS-CoV-2_Nsp2	CACCATGGGAACCAATTCAGGCATACACTCGCTAT GTC	GGTCTAGATATCTCGAGTGCTTAACCGCCTTTGA GTGTG
pCDNA5-Nsp1-P2A-Nsp2	GATACATATGATCATGACATCGATTACAAGGATGA CGATG	GTCATCGTCATCCTTGTAATCTGCTGCAGGACCT GGATTCT CCTCCACATCTCCTGCCTGCTTTAACAGAGAGAA ATTAGTA GCGTATGCCCCCTCCGTTAAGCTCACGC
pMAGIC-MYC-Nsp2(C.O)	TTTCTATACAAAGTTGCCACATGGAACAAAACTC ATCTCAGAAGAGGATCTGAAGCTTATGGCTTACAC CCGCTAC	CTTTATTATACAAAGTTGCGTTAACCTCCCTTCAG GGTG

**Table S2.** Primers and probes used for RT-qPCR and ddPCR experimentations.

<b>Mouse RT-qPCR and ddPCR</b>			
	Forward (5'-3')	Reverse (5'-3')	Probe (5'-3')
<i>Cxcl1</i>	CCCAAACCGAAGTCATAGCC	TGGGGACACCTTTTAGCATC	-
<i>Ccl2</i>	AGAGCTACAAGAGGATCACC A	GTATGTCTGGACCCATTTCCTC	-
<i>Isg56</i>	CAGGATATTACCTCCGCTAT G	CCTCCAAGCAAAGGACTTCT	-
<i>Ifny</i>	ATGAACGCTACACACTGCAT C	CCATCCTTTTGCCAGTTCCTC	-
<i>Ifn<math>\alpha</math></i> panel	GCAACCCTCCTAGACTCATT TGC	TATKTCCTCACAGCCAGCAG	-
<i>Gapdh</i>	AACTTTGGCATTGTAGAAGG	ACACATTGGGGTTAGGAACA	-
<i>Rpp30</i>	AGATTTGGATTAAAGAGCG	GAGCAGCAGTCTCCACGAGT	5HEX/AGAGCCTTC/ZEN/AGGTCTGAG CC/3IABkFQ
<b>Human RT-qPCR and ddPCR</b>			
	Forward (5'-3')	Reverse (5'-3')	Probe (5'-3')
<i>IFN<math>\beta</math></i>	AAACTCATGAGCAGTCTGCA	AGGAGATCTTCAGTTCCCAGG	56- FAM/ATGGTCCAGGCACAGTGACTGT CCTC/3BHQ_1
<i>GAPDH</i>	TTCACACCCATGACGAACAT	AATCCCATCACCATCATCTTCCAG	5HEX/CGACGTACT/ZEN/CAGCGCCA GCATC/3IABkFQ
<i>ISG15</i>	CATGGGCTGGGACCTGACG	CGCCAATCTTCTGGGTGATCTG	-
<i>ISG56</i>	CTTGAGCCTCCTTGGGTTCG	GCTGATATCTGGGTGCCTAAGG	-
SARS-CoV- 2_E	TTCTTGCTTTCGTGGTATTCT	GACTCACGTTAACAATATTGCAG	E_SARBECO_P1 PROBE

**Table S3.** Genes included in RT<sup>2</sup> profiler PCR Arrays Mouse Antiviral Response (PAMM-122ZR).

Symbol	Description	Symbol	Description
Aim2	Absent in melanoma 2	Map2k1	Mitogen-activated protein kinase kinase 1
Atg12	Autophagy-related 12 (yeast)	Map2k3	Mitogen-activated protein kinase kinase 3
Atg5	Autophagy-related 5 (yeast)	Map3k1	Mitogen-activated protein kinase kinase kinase 1
Azi2	5-azacytidine induced gene 2	Map3k7	Mitogen-activated protein kinase kinase kinase 7
Card9	Caspase recruitment domain family, member 9	Mapk1	Mitogen-activated protein kinase 1
Casp1	Caspase 1	Mapk14	Mitogen-activated protein kinase 14
Casp8	Caspase 8	Mapk3	Mitogen-activated protein kinase 3
Ccl3	Chemokine (C-C motif) ligand 3	Mapk8	Mitogen-activated protein kinase 8
Ccl4	Chemokine (C-C motif) ligand 4	Mavs	Mitochondrial antiviral signaling protein
Ccl5	Chemokine (C-C motif) ligand 5	Mefv	Mediterranean fever
Cd40	CD40 antigen	Mx1	Myxovirus (influenza virus) resistance 1
Cd80	CD80 antigen	Myd88	Myeloid differentiation primary response gene 88
Cd86	CD86 antigen	Nfkb1	Nuclear factor of kappa light polypeptide gene enhancer in B-cells 1, p105
Chuk	Conserved helix-loop-helix ubiquitous kinase	Nfkbia	Nuclear factor of kappa light polypeptide gene enhancer in B-cells inhibitor, alpha
Cnpy3	Canopy 3 homolog (zebrafish)	Nlrp3	NLR family, pyrin domain containing 3
Ctsb	Cathepsin B	Nod2	Nucleotide-binding oligomerization domain containing 2
Ctsl	Cathepsin L	Oas2	2'-5' oligoadenylate synthetase 2
Ctss	Cathepsin S	Pin1	Protein (peptidyl-prolyl cis/trans isomerase) NIMA-interacting 1
Cxcl10	Chemokine (C-X-C motif) ligand 10	Pstpip1	Proline-serine-threonine phosphatase-interacting protein 1
Cxcl11	Chemokine (C-X-C motif) ligand 11	Pycard	PYD and CARD domain containing
Cxcl9	Chemokine (C-X-C motif) ligand 9	Rela	V-rel reticuloendotheliosis viral oncogene homolog A (avian)
Cyld	Cylindromatosis (turban tumor syndrome)	Ripk1	Receptor (TNFRSF)-interacting serine-threonine kinase 1
Dak	Dihydroxyacetone kinase 2 homolog (yeast)	Spp1	Secreted phosphoprotein 1
Ddx3x	DEAD/H (Asp-Glu-Ala-Asp/His) box polypeptide 3, X-linked	Stat1	Signal transducer and activator of transcription 1
Ddx58	DEAD (Asp-Glu-Ala-Asp) box polypeptide 58	Sugt1	SGT1, suppressor of G2 allele of SKP1 (S. cerevisiae)
Dhx58	DEXH (Asp-Glu-X-His) box polypeptide 58	Tank	TRAF family member-associated Nf-kappa B activator
Fadd	Fas (TNFRSF6)-associated via death domain	Tbk1	TANK-binding kinase 1
Fos	FBJ osteosarcoma oncogene	Tbkbp1	TBK1 binding protein 1
Hsp90aa1	Heat shock protein 90, alpha (cytosolic), class A member 1	Ticam1	Toll-like receptor adaptor molecule 1
Ifih1	Interferon induced with helicase C domain 1	Tlr3	Toll-like receptor 3
Ifna2	Interferon alpha 2	Tlr7	Toll-like receptor 7
Ifnar1	Interferon (alpha and beta) receptor 1	Tlr8	Toll-like receptor 8
Ifnb1	Interferon beta 1, fibroblast	Tlr9	Toll-like receptor 9
Ikbkb	Inhibitor of kappaB kinase beta	Tnf	Tumor necrosis factor
Il12a	Interleukin 12A	Tradd	TNFRSF1A-associated via death domain
Il12b	Interleukin 12B	Traf3	Tnf receptor-associated factor 3
Il15	Interleukin 15	Traf6	Tnf receptor-associated factor 6
Il18	Interleukin 18	Trim25	Tripartite motif-containing 25
Il1b	Interleukin 1 beta	Actb	Actin, beta
Il6	Interleukin 6	B2m	Beta-2 microglobulin
Irak1	Interleukin-1 receptor-associated kinase 1	Gapdh	Glyceraldehyde-3-phosphate dehydrogenase
Irf3	Interferon regulatory factor 3	Gusb	Glucuronidase, beta
Irf5	Interferon regulatory factor 5	Hsp90ab1	Heat shock protein 90 alpha (cytosolic), class B member 1
Irf7	Interferon regulatory factor 7	MGDC	Mouse Genomic DNA Contamination
Isg15	ISG15 ubiquitin-like modifier	RTC	Reverse Transcription Control
Jun	Jun oncogene	PPC	Positive PCR Control