

Mock-C

NC

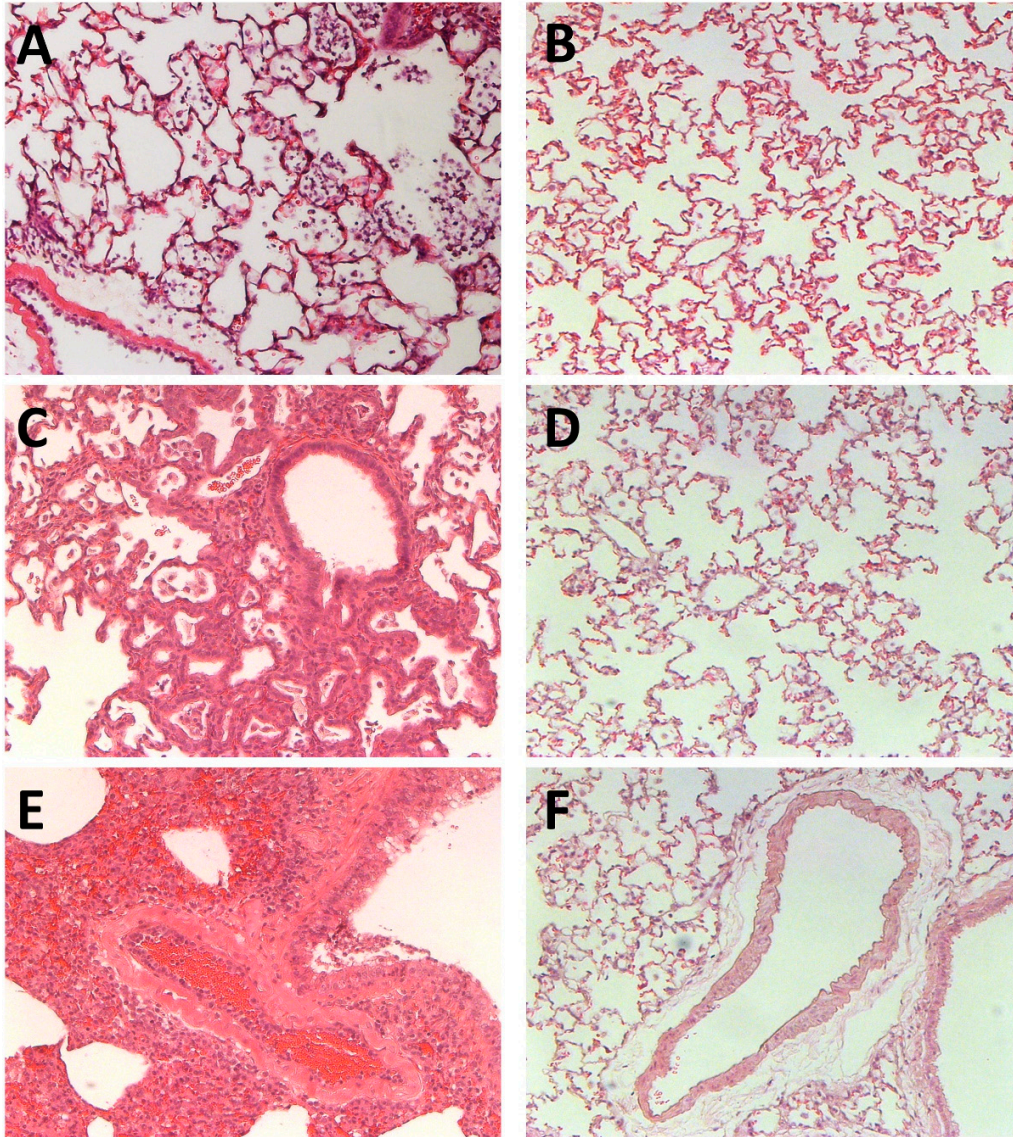


Figure S1. Representative histopathological lesions in the lungs of Mock-C hamsters post challenge (panels A, C, and E) and TS11-C at 20 dpi as negative control (NC) hamsters (panels B, D, and F). A) The hematoxylin and eosin (H&E)-stained lung section of a Mock-C hamster at 2 days post-challenge (dpc), showing moderate alveolitis. B) The H&E-stained lung section of a negative control hamster, showing normal alveoli. C) The H&E-stained lung section of a Mock-C hamster at 12 dpc, showing moderate thickening of alveolar septa. D) The H&E-stained lung section of a negative control hamster, showing normal alveoli. E) The H&E-stained lung section of a Mock-C hamster at 2 dpc, showing moderate endothelialitis or vasculitis. F) The H&E-stained lung section of a mock control hamster, showing a normal vessel. Original magnification, $\times 200$.