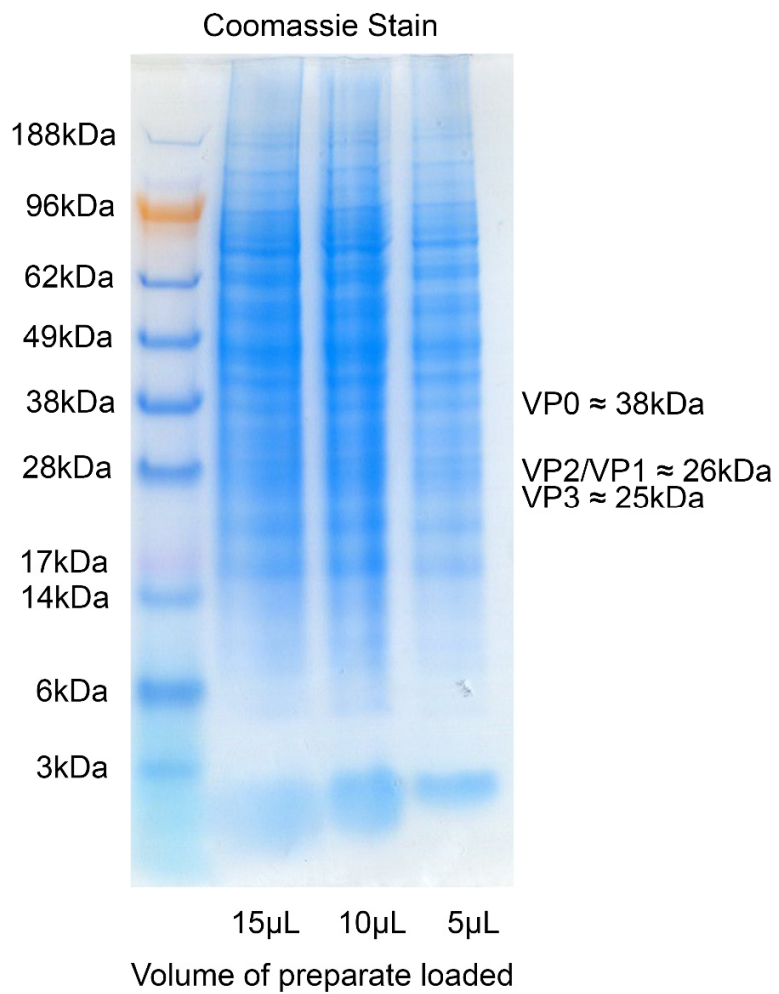


Supplementary Figure



SDS-PAGE gel with Coomassie stain of O1M VLP vaccine prepare. Different volumes of the prepare were loaded onto the gel to better allow for visualization of protein components. Additional bands not associated with FMDV antigen are a result of the methodology used in this manuscript, as lysis of the cells results in carryover of proteins from the production cell line into the prepare.