

Supplementary Material

Anti-SARS-CoV-2 Titers Predict the Severity of COVID-19

A. Kritikos^{1,2^}, S. Gabellon^{2^}, JL. Pagani³, M. Monti⁴, PY. Bochud², O. Manuel², A. Coste¹, G. Greub^{1,2}, M. Perreau⁵, G. Pantaleo⁵, A. Croxatto^{1,6}, F. Lamothe^{1,2}

¹ Institute of Microbiology, Lausanne University Hospital and University of Lausanne; antonios.kritikos@chuv.ch (AK); Alix.Coste@chuv.ch (ACO); Antony.Croxatto@ne.ch (AC); Gilbert.Greub@chuv.ch (GG); Frederic.Lamothe@chuv.ch (FL)

² Infectious Diseases Service, Lausanne University Hospital and University of Lausanne; sophie.gabellon@unil.ch (SG); Pierre-Yves.Bochud@chuv.ch (PYB), Oriol.Manuel@chuv.ch (OM)

³ Intensive Care Unit, Lausanne University Hospital and University of Lausanne; Jean-Luc.Pagani@chuv.ch (JLP)

⁴ Service of Internal Medicine, Lausanne University Hospital and University of Lausanne; Matteo.Monti@chuv.ch (MM)

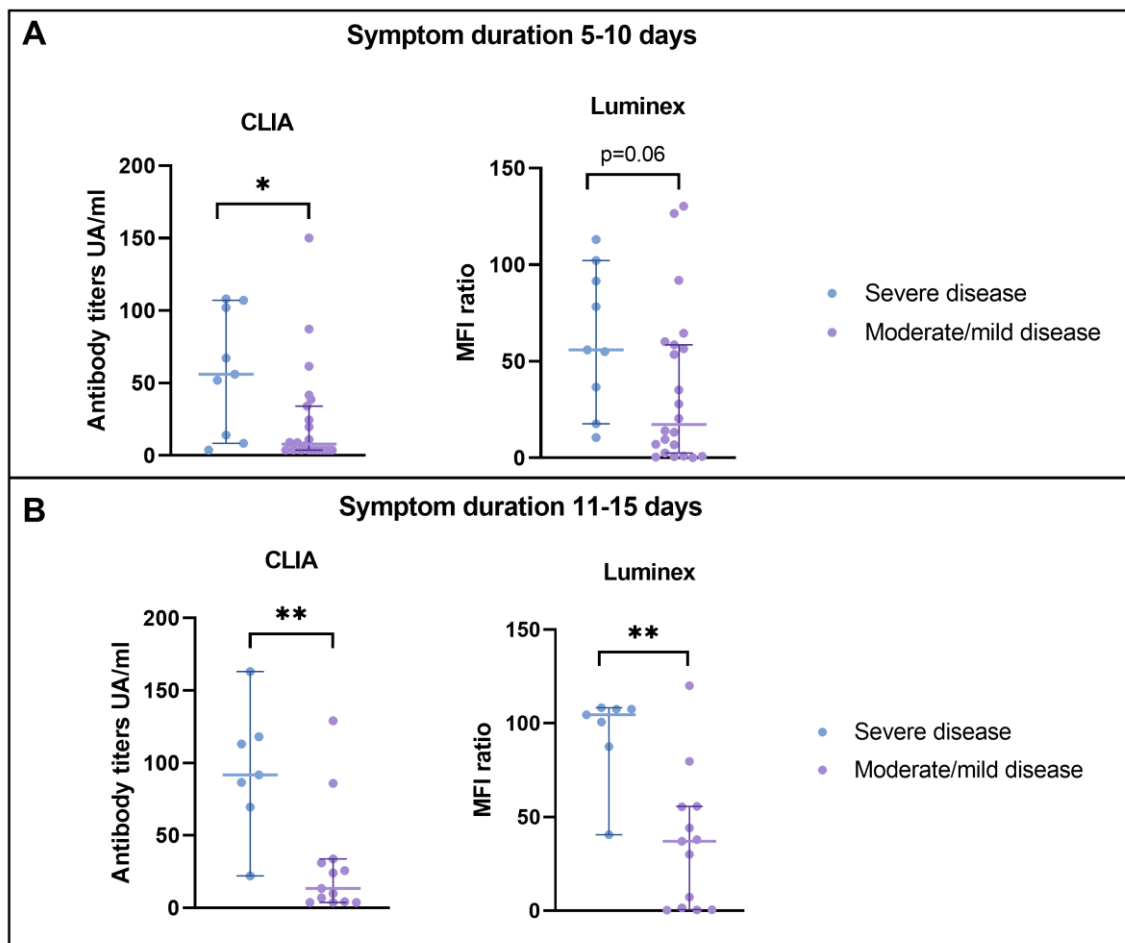
⁵ Service of Immunology and Allergy, Lausanne University Hospital and University of Lausanne; Matthieu.Perreau@chuv.ch (MP); Giuseppe.Pantaleo@chuv.ch (GP)

⁶ ADMED Microbiology, La Chaux-de-Fonds, Switzerland

* Correspondence: Antonios.kritikos@chuv.ch; Tel: +41-(0)-21-314-02-71

^ Equal contribution

Figure S1. Antibody titers stratified by duration of symptoms.



Scatter plot with lines at median and whiskers showing the 95% confidence interval (CI). **Panel A)** Symptom duration 5-10 days, **panel B)** symptom duration 11-15 days. ($*$ = $p<0.05$, $**$ = $p<0.01$, MFI= Median fluorescence intensity).

Table S1: Administered anti-SARS-CoV-2 treatment.

| Characteristics, n (%) | Total patients (N = 70) | Severe disease | Moderate disease | Mild disease | p_value |
|---------------------------------|----------------------------|----------------|------------------|--------------|------------------|
| Any anti-SARS-CoV-2 treatment | 44 (63) | 22 (31) | 20 (29) | 2 (3) | <0.001 |
| Protease inhibitor ¹ | 14 (32) | 6 (27) | 7 (35) | 1 (50) | 0.3 |
| Hydroxychloroquine | 27 (61) | 12 (54) | 13 (65) | 2 (100) | 0.01 |
| Remdesivir | 8 (18) | 6 (27) | 2 (10) | 0 | <0.001 |
| Tocilizumab | 20 (45) | 15 (68) | 5 (25) | 0 | <0.01 |
| Corticosteroid treatment | 7 (16) | 5 (23) | 2 (10) | 0 | 0.1 |
| Interferon-based therapy | 2 (4) | 0 | 2 (10) | 0 | 0.9 |

¹ Lopinavir or atazanavir