

Table S1
Viral Proteins Detected in FLAG-Immunoprecipitates from Nuclear Lysates
of Cells Infected with 53-F, but not Wild-Type HCMV

Molecular weight band	# of peptides	Viral protein	Viral protein function	Coverage (% of total amino acids)
150-250kD	6	MCP	Major capsid protein	6
100-150kD	19	MCP	Major capsid protein	19
	9	TRS1	Capsid assembly	9
	7	pp150	Tegument protein	7
	7	UL50	NEC subunit	7
	7	UL56	Terminase subunit	7
	6	UL89	Terminase subunit	6
75-100kD	15	UL104	Capsid portal protein	21.9
	11	UL89	Terminase subunit	15.4
	11	UL25	Tegument protein	20.1
	10	UL50	NEC subunit	24.9
	5	US23	Tegument protein	7.9
	4	TRS1	Capsid assembly	4.7
	3	pp65	Tegument protein	6.1
	2	UL97	Ser/Thr kinase	4.4
50-75kD	8	pp65	Tegument protein	24.3
	2	UL50	NEC subunit	6.2
30-50kD	17	UL53	NEC subunit	31.9
	17	UL50	NEC subunit	39.8
	8	UL44	Processivity factor	19.9
	17	UL53	NEC subunit	31.9
	17	UL50	NEC subunit	39.8

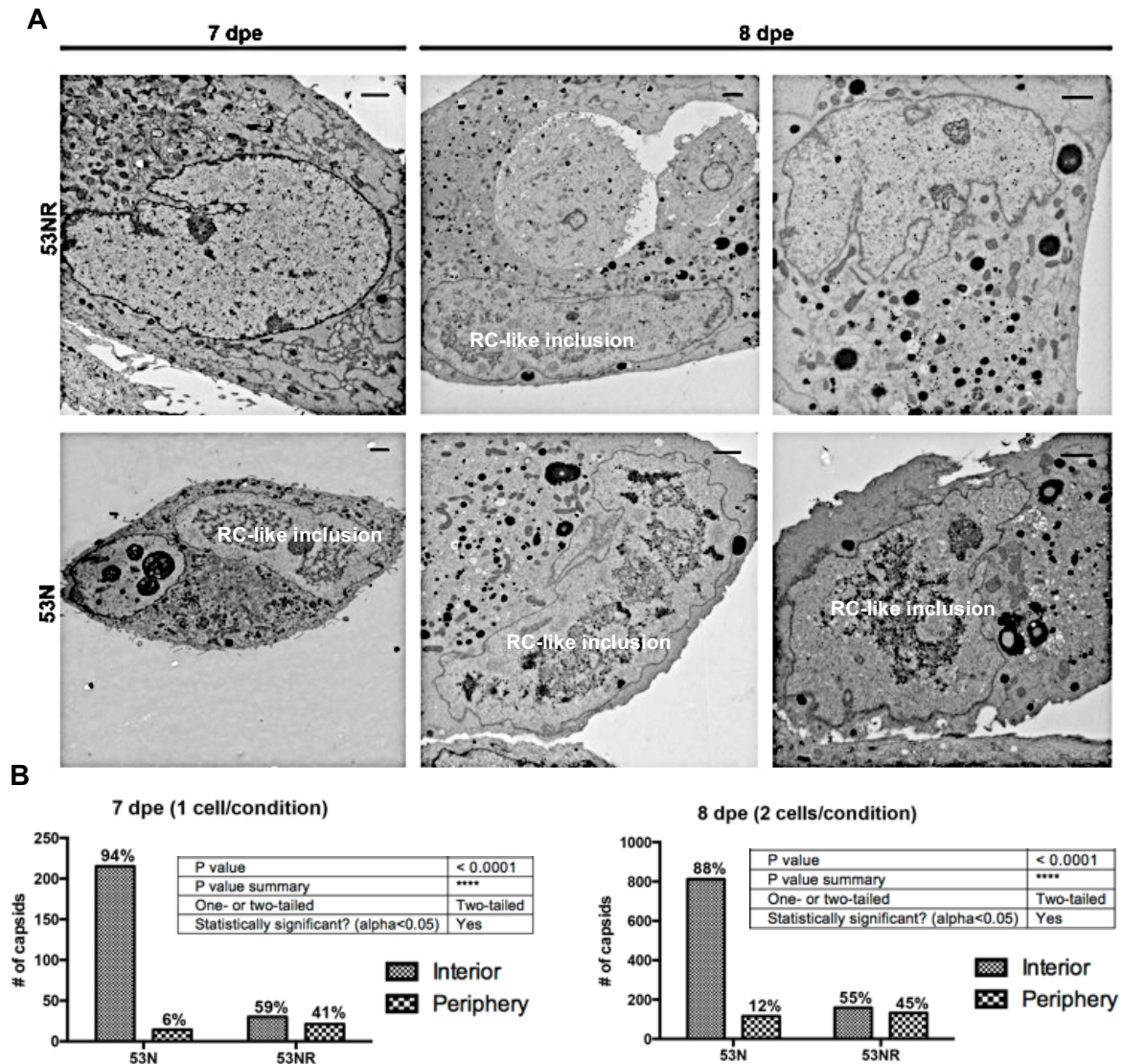


Figure S1: CLEM analysis of intranuclear distribution of capsids. HFFs were electroporated with 53N or 53NR HCMV BAC DNA, fixed at 7 or 8 dpe, and processed for CLEM. The percentage of capsids located within $2\mu\text{m}$ of the nuclear rim was calculated (scale bars are $2\mu\text{m}$). (A) Shows micrographs of whole cell sections of each cell analyzed. The pair of cells from 7 dpe are also shown in Fig 2 from [10]. (B) Shows capsid counts and statistical calculations using Fisher's exact test.