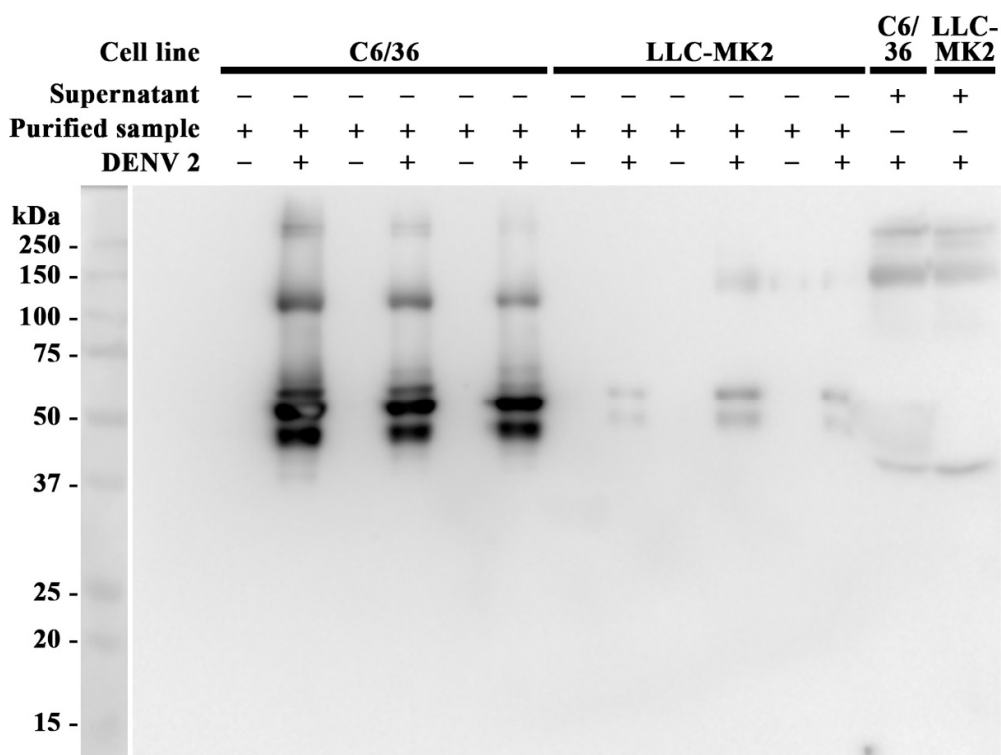


Figure S1, Tables S1 and S2 and uncropped western blots.

**Supplemental Figure S1.**

Western blot analysis of independent triplicates of purified virus and corresponding mock preparations. Samples were electrophoresed through 12% SDS PAGE gels after which proteins were transferred to solid matrix and probed with monoclonal antibody HB112 (mAB 4G2). Multiple bands of similar sizes have been observed by others using this antibody [1]. The whole, uncropped blot is shown together with the protein marker lane.

1. Zanluca, C.; Mazzarotto, G. A.; Bordignon, J.; Duarte Dos Santos, C. N., Development, characterization and application of monoclonal antibodies against Brazilian Dengue virus isolates. *PLoS One* **2014**, 9, (11), e110620.

**Table S1.** Titer of infected supernatants and purified virions produced from C6/36 and LLC-MK<sub>2</sub> cells.

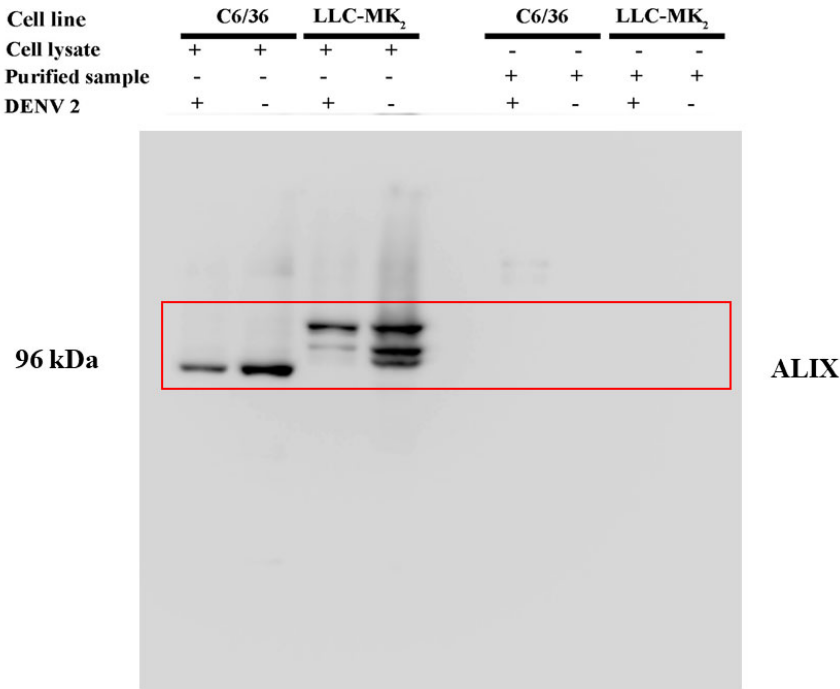
Pfu, particle forming unit.

No.	Name	Supernatant (Before purification)		Purified sample		Concentration fold
		Volume (ml)	Titer (Pfu/μl)	Volume (μl)	Titer (Pfu/μl)	
1	D2L, C6/36-1	150	1.5x10 <sup>6</sup>	50	9.2x10 <sup>9</sup>	6,166
2	D2L, C6/36-2	150	2.7x10 <sup>8</sup>	50	1.8x10 <sup>10</sup>	66
3	D2L, C6/36-3	150	7.5x10 <sup>7</sup>	50	1.4x10 <sup>9</sup>	19
4	D2L, LLC-MK <sub>2</sub> -1	150	2.3x10 <sup>7</sup>	50	1.0x10 <sup>7</sup>	0.46
5	D2L, LLC-MK <sub>2</sub> -2	150	2.6x10 <sup>7</sup>	50	1.7x10 <sup>7</sup>	0.64
6	D2L, LLC-MK <sub>2</sub> -3	150	3.5x10 <sup>7</sup>	50	1.7x10 <sup>8</sup>	5

**Table S2.** DENV 2 gene copy number in purified samples in 3 replicates

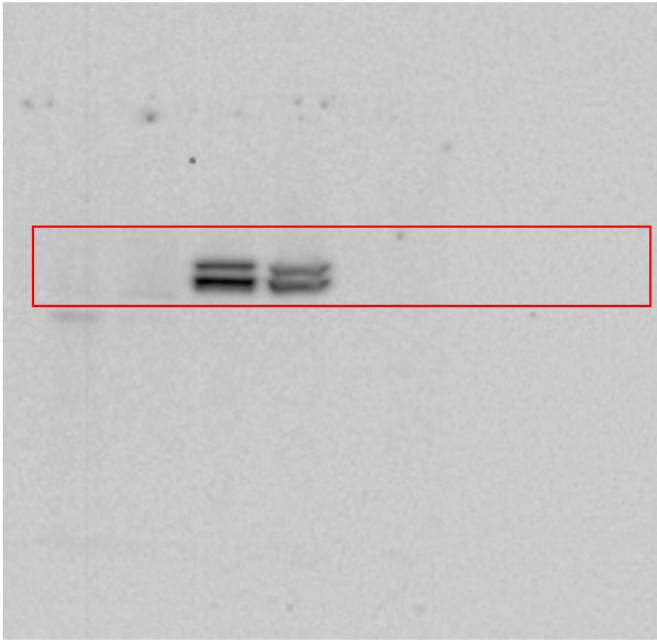
Samples	copies/ $\mu$ L	Sample Volume ( $\mu$ L)	Copies/sample
C6/36_Mock L.2	0	54	0
C6/36_Mock L.3	0	4	0
C6/36_Mock L.4	0	36	0
C6/36_DENV2 L.2	$4.34 \times 10^7$	52	$2.25 \times 10^9$
C6/36_DENV2 L.3	$1.58 \times 10^9$	50	$7.91 \times 10^{10}$
C6/36_DENV2 L.4	$5.44 \times 10^8$	18	$9.79 \times 10^9$
LLC_Mock L.1	0	28	0
LLC_Mock L.2	0	14	0
LLC_Mock L.4	0	4	0
LLC_DENV2 L.1	$1.67 \times 10^7$	38	$6.33 \times 10^8$
LLC_DENV2 L.2	$1.26 \times 10^8$	28	$3.52 \times 10^9$
LLC_DENV2 L.4	$9.38 \times 10^6$	8	$7.50 \times 10^7$

Uncropped western blots



Cell line	C6/36		LLC-MK <sub>2</sub>		C6/36		LLC-MK <sub>2</sub>	
Cell lysate	+	+	+	+	-	-	-	-
Purified sample	-	-	-	-	+	+	+	+
DENV 2	+	-	+	-	+	-	+	-

90 kDa



Hsp90