

Supplementary Materials

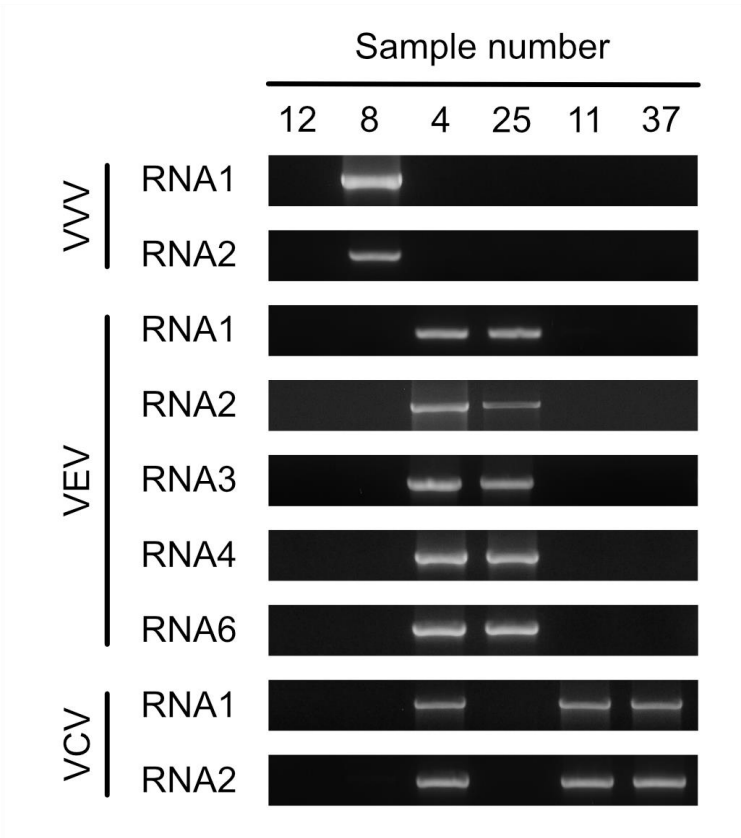


Figure S1. Analysis of viral infections in *Vitis coignetiae*. Total RNA extracted from samples 12, 8, 4, 25, 11, and 37 was analyzed using RT-PCR with primers listed in Table S1. VVV: Vitis varicosavirus, VEV: Vitis emaravirus, VCV: Vitis crypticvirus.

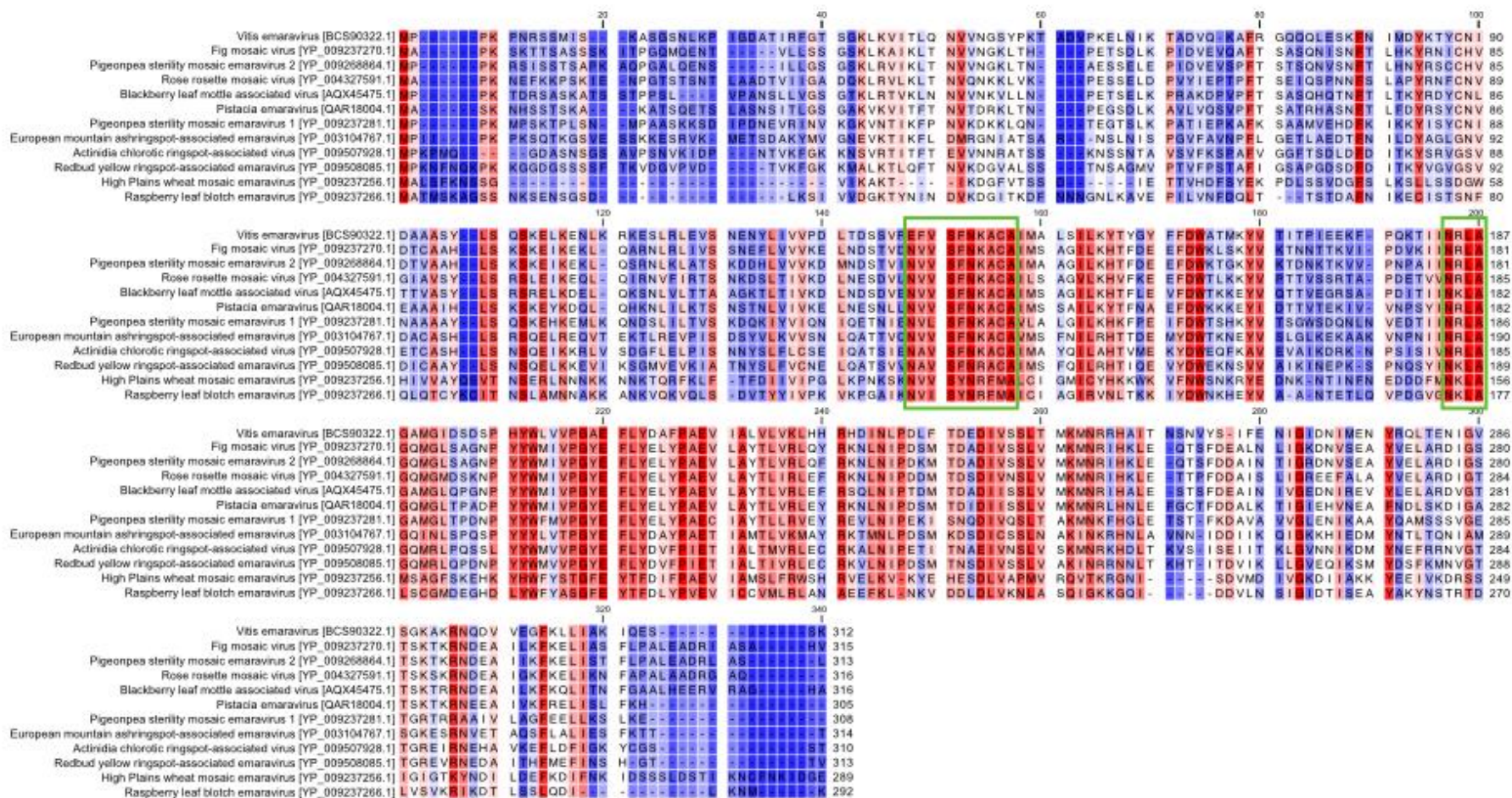


Figure S2. Alignment of coat protein amino-acid sequence among *Vitis emaravirus* and other approved Emaravirus. Alignment was performed using the CLC Genomic Workbench software (ver. 8.5.1; Qiagen). Background colors red and blue indicate high and low conservation among applied sequences, respectively. Green frames alternatively indicate EFVSFNKA and NXLA conserved motifs.

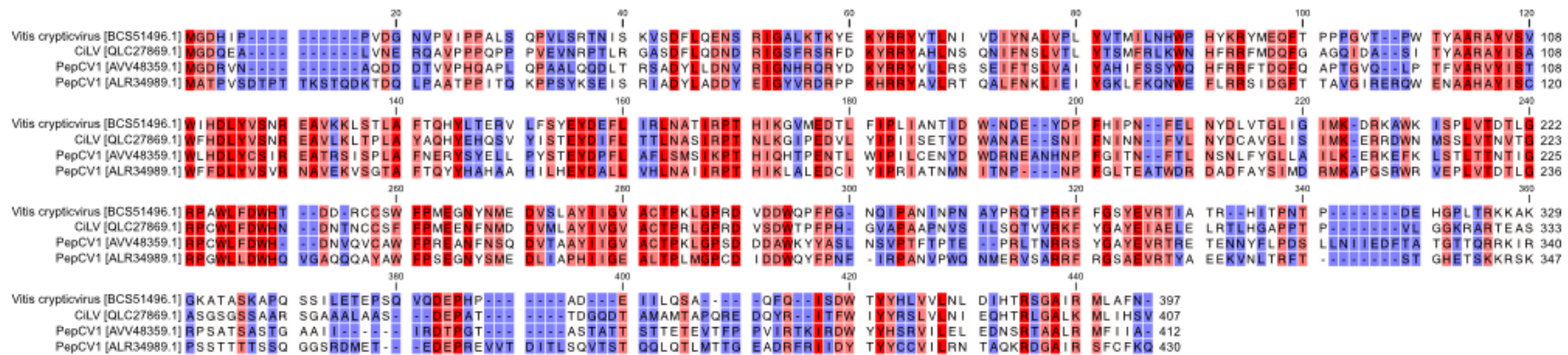


Figure S3. Alignment of the coat protein amino-acid sequence among *Vitis crypticivirus* and other *Partitiviridae*. Alignment was performed using CLC Genomic Workbench software (ver. 8.5.1; Qiagen). Background colors red and blue indicate high and low conservation among applied sequences, respectively.

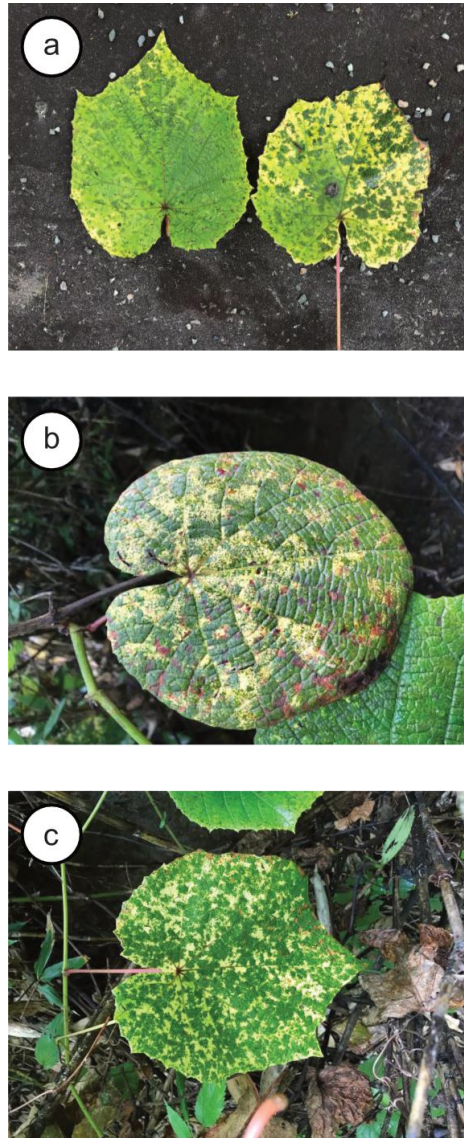


Figure S4. Some *Vitis coignetiae* samples used in this study showed viral-like mosaic symptoms. (a) Sample 1 infected by *Vitis varicosavirus* (VVV), grapevine Pinot gris virus (GPGV), and grapevine berry inner necrosis virus (GINV) had mosaic symptoms. (b) Sample 7 infected by GPGV and GINV also had mosaic symptoms. (c) Sample 8 infected by VVV, GPGV, and GINV also had mosaic symptoms.

Table S1. Primer sequences used in this study.

Name of primer	Sequence (5'-3')	Target
VVV_RdRp_F1	CAGGCATCTAGACAGAACTC	Vitis varicosavirus RNA1
VVV_RdRp_R1	TCTTAACGGTTAGCAGCTTT	
VVV_Cpfull_F1	GCGAGAGCAAAAACTCAGAA	Vitis varicosavirus RNA2
VVV_Cpfull_R1	CGAACTGTGAATGTATATGTAGT	
VEV_RdRp_F1	ATGGACTTTGCTGGAACAATA	Vitis emaravirus RNA1
VEV_RdRp_R1	CATTGTATGTGTATGTTTTCTTCA	
VEV_RNA2_F1	ACTCCTCAAATCAATCTATTCTTGA	Vitis emaravirus RNA2
VEV_RNA2_R1	GTTCTCCTCAAATATACCAACGA	
VEV_RNA3_F2	CTTTCAGAAAATTTAACATCTYTTA	Vitis emaravirus RNA3
VEV_RNA3_R2	CCTATRTTCTCAAAGATAGARTGC	

VEV_RNA4_F1	TACTATGAAGAAAGTGAAAGCTGA	Vitis emaravirus RNA4
VEV_RNA4_R1	AAGGATTAATCTGATGGTCCTA	
VEV_RNA6_F1	TTGATATTTGGTCATGGCATT	Vitis emaravirus RNA6
VEV_RNA6_R1	AGCAAACCTAAGCACATAAAT	
VCV_RNA1_F1	TTTTCACACTACGACTGTAT	Vitis crypticvirus RNA1
VCV_RNA1_R1	AATGTGCCCTCTCAAGCATCT	
partV_RNA2_F1	TACCGTTTAAGATGGGTGAT	Vitis crypticvirus RNA2
partV_RNA2_F1	GTGACTAATGGAGAGATTTTC	
GINV_RdRp_F2	ATGTCGGTCTTGATATTTTCT	grapevine berry inner berry necrotic virus
GINV_RdRp_R2	AACCATCCAATCACGAATTA	
GPGV_CPfull_F1	ATCTGGCTGTGCTGAAAATA	grapevine Pinot gris virus
GPGV_CPfull_R1	ACTACATACTAAATGCACTCTCC	
