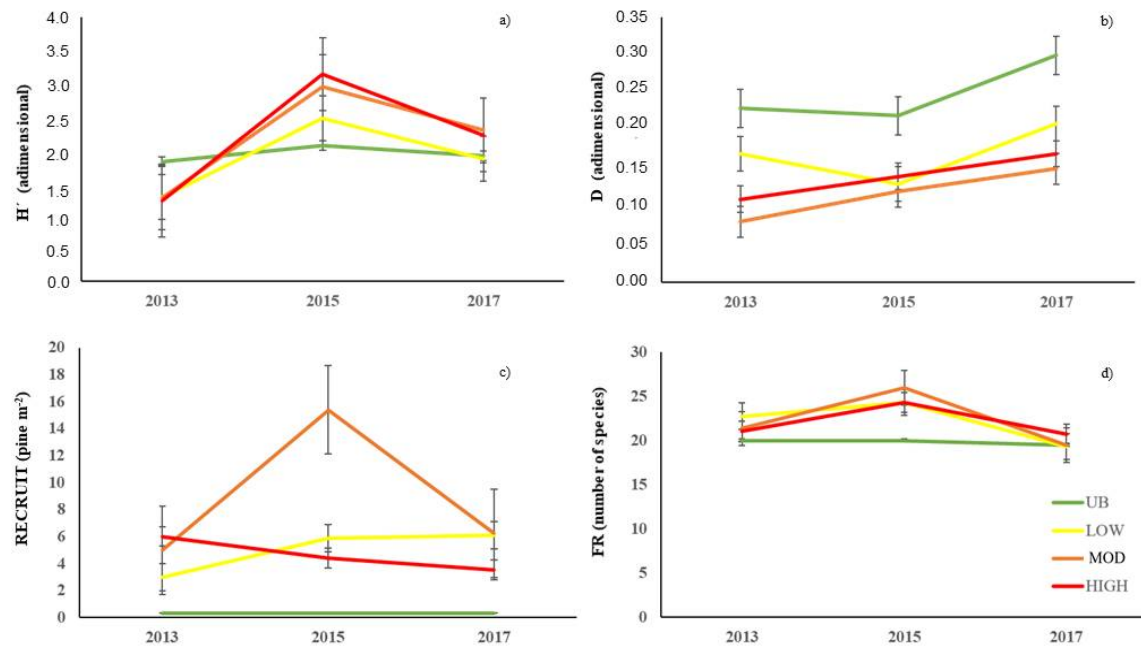


## Supplementary File



**Figure 1.** Descriptive comparison procedure to determine patterns of **a)** Shannon index ( $H'$ , adimensional), **b)** Simpson index ( $D$ , adimensional), **c)** Aleppo pine recruitment rate (RECRUIT, pine seedlings  $m^{-2}$ ) and **d)** Floristic richness index (FR, number of species) related to time after fire (TIME, years after fire (one (2013), three (2015) and five (2017))) and burn severity classes (SEV, UB = Unburned (green line); LOW = Low burn severity (yellow line); MOD = Moderate burn severity (orange line); HIGH = High burn severity (red line)). The discriminant method was Tukey's honestly significant difference (HSD) procedure, including mean value and standard error.