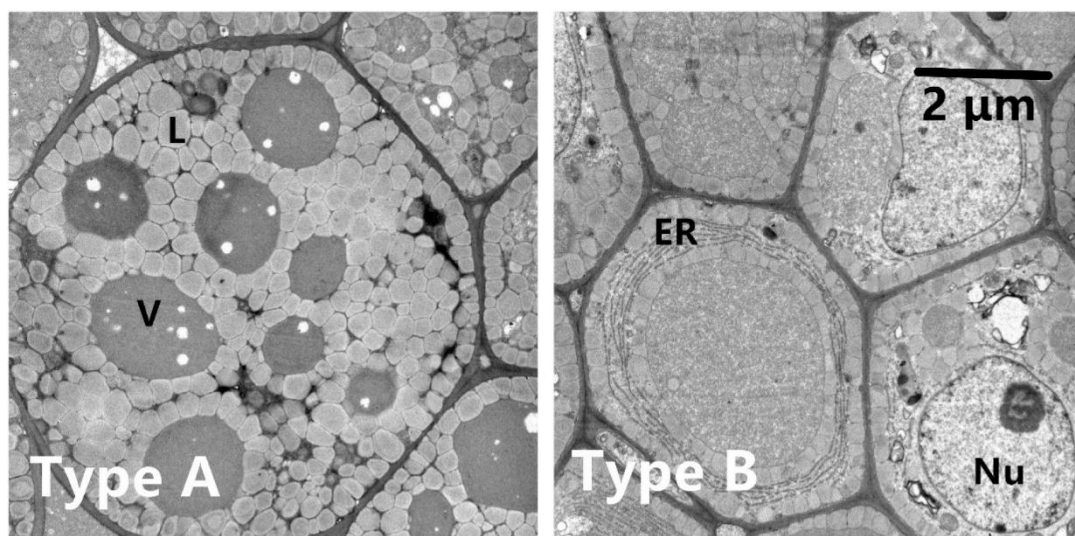
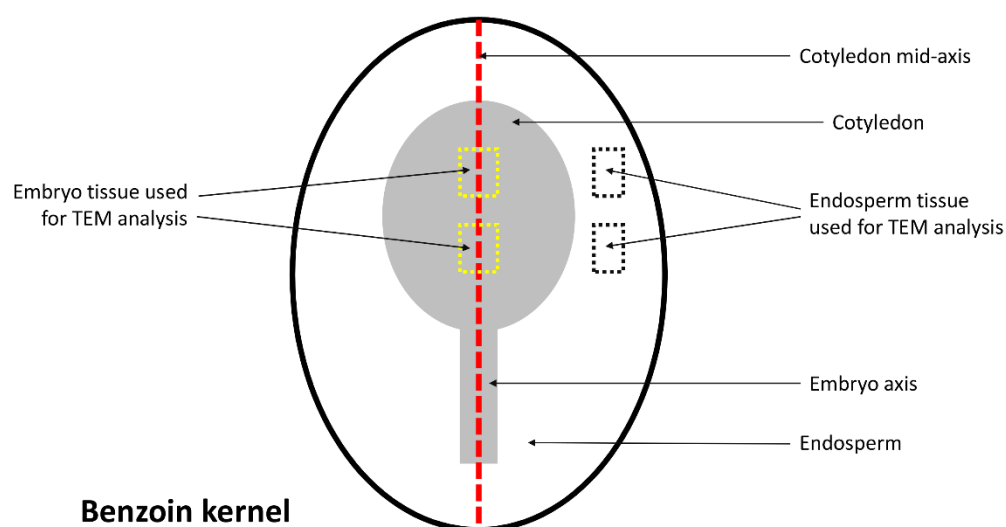


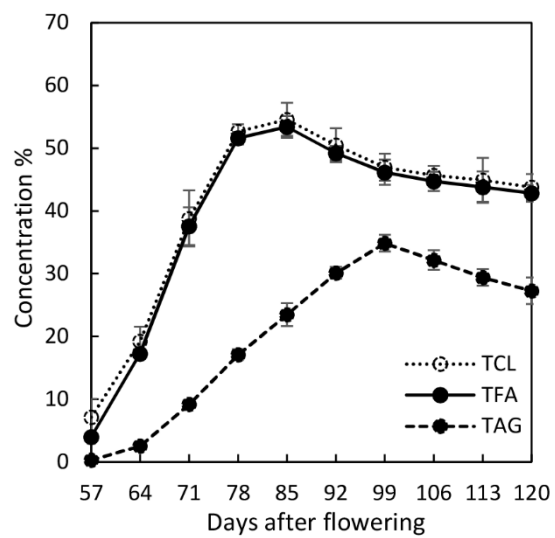
## Supplementary Materials



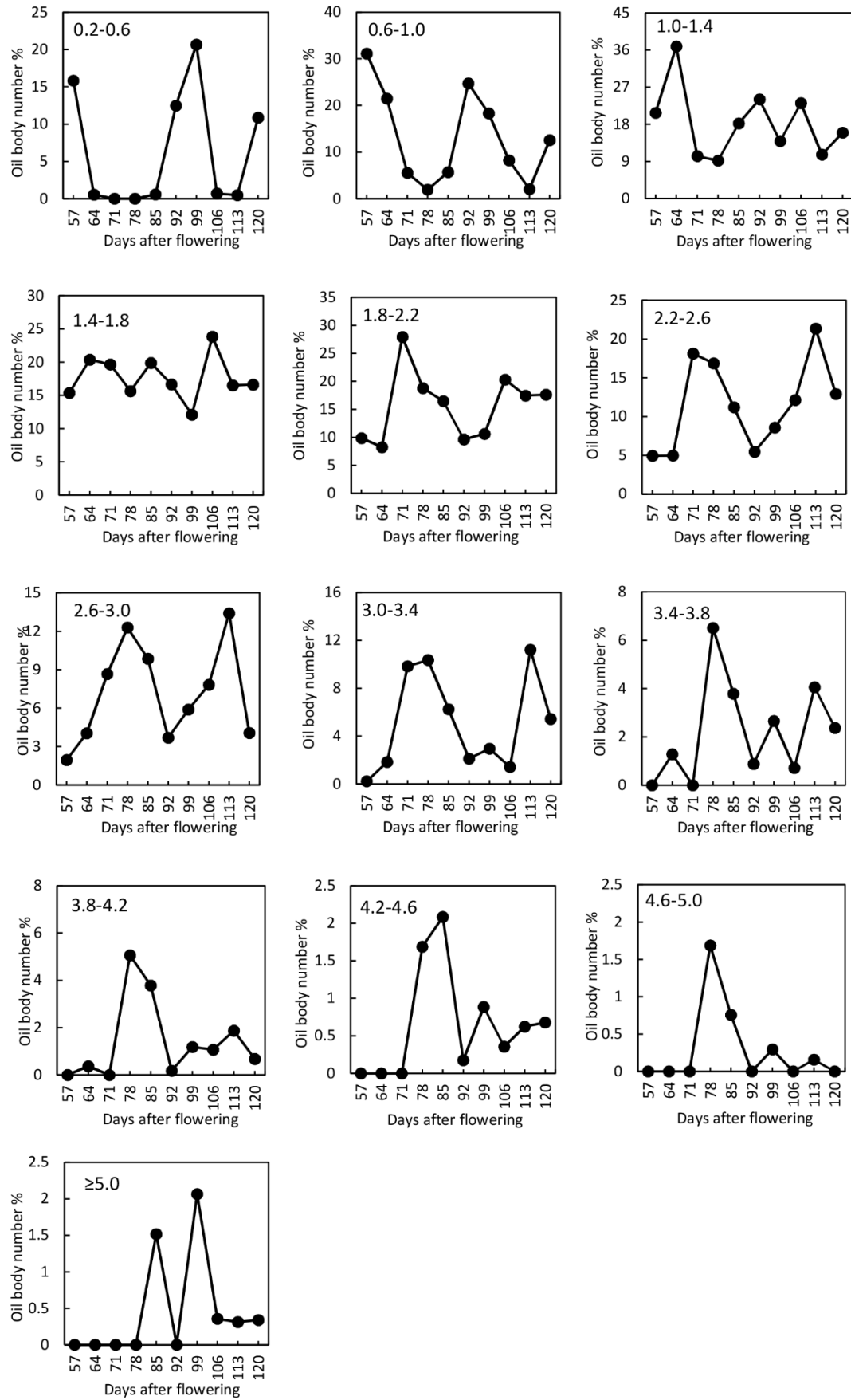
**Figure S1.** Two types of TEM images in *Styra tonkinensis* embryo cells during seed development. Type A was found in cotyledons, and Type B was mostly found in axis. L, lipid body; Nu, nucleolus; V, vacuole; ER, Endoplasmic reticulum.



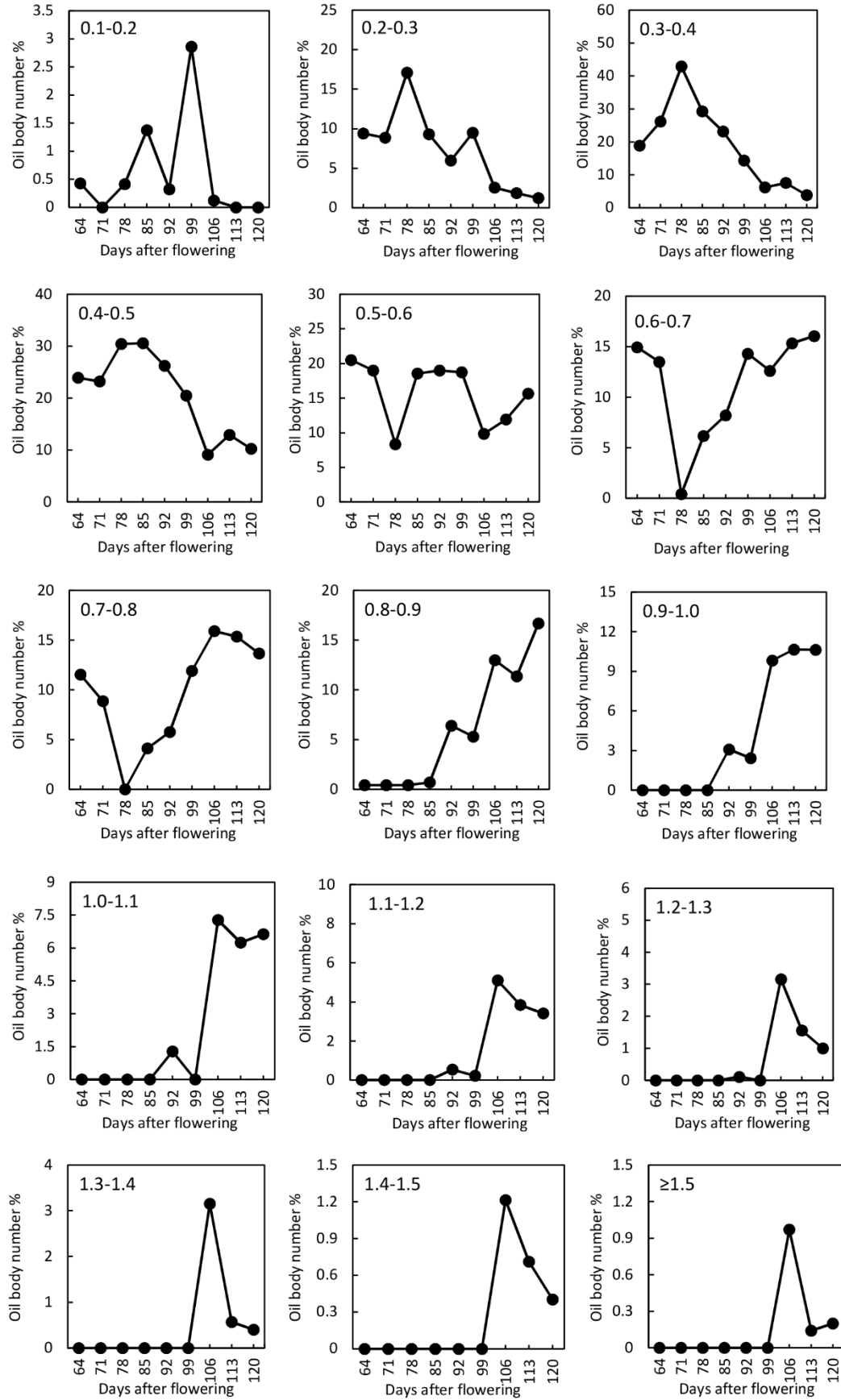
**Figure S2.** The kernel sections selected for TEM study are shown. Two sections (indicated by the yellow dashed dots) along the cotyledon mid-axis (red dashed line) are chosen for the embryo TEM qualification analysis. Two endosperm sections near the cotyledon (indicated by the black dots) are used for endosperm ROA and OBD.



**Figure S3.** Total crude lipid (TCL), total fatty acids (TFA) and triacylglycerol (TAG) concentration (100%×w/w) in the developing dry kernels of *Styrax tonkinensis*.



**Figure S4.** Dynamics of oil body number proportions under various OB sizes ( $\mu\text{m}$ ) in benzoin endosperm cells. OB sizes were indicated in each line chart.



**Figure S5.** Dynamics of oil body number proportions under various OB sizes (μm) in benzoin embryo cells. OB sizes were indicated in each line chart.