

Use of an Arboretum and DNA Barcoding for the Detection and Identification of Leaf-Mining Insects on Alien Woody Plants

Authors: Natalia I. Kirichenko, Stanislav Gomboc, Barbara Piškur, Maarten de Groot

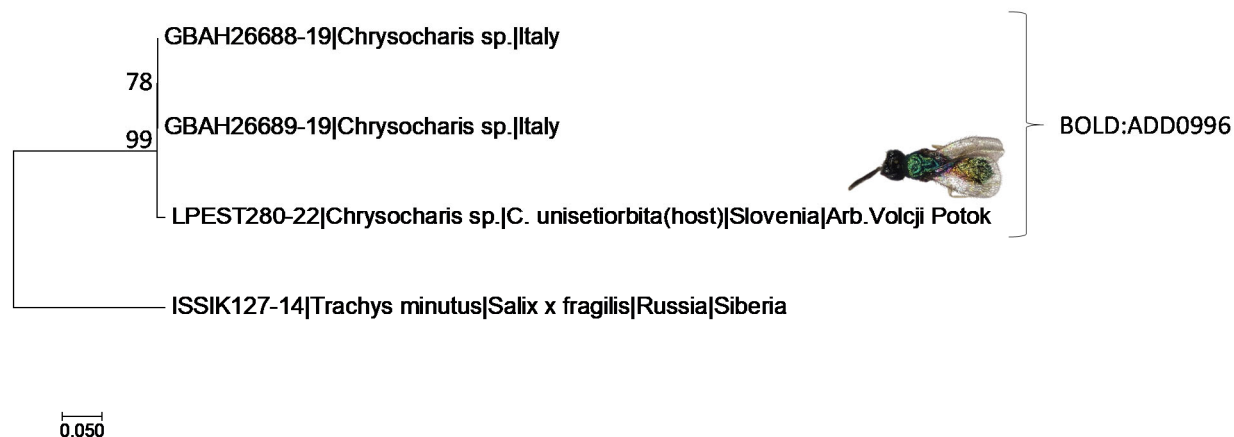


Figure S1. The maximum likelihood tree illustrating the relationship between the parasitoid *Chrysocharis* sp. (Hymenoptera: Eulophidae) obtained from the leaf mine of *Cerodontha unisetiorbita* Zlobin, 1992 (Diptera: Agromyzidae) in the Volčji Potok Arboretum (Gorenjska region, Slovenia) and representatives of the parasitoid species from Italy.

Each specimen is identified by its process ID, insect genus, host (in case of the specimen from Slovenia), country, sampled locality (in case of Slovenia only). Species BIN is indicated next to the species clusters on the right. The bootstrap values > 70% are shown next to the branches. No genetic divergence detected between two Italian specimens, whereas 1.1% divergence was found between Slovenian and Italian specimens.