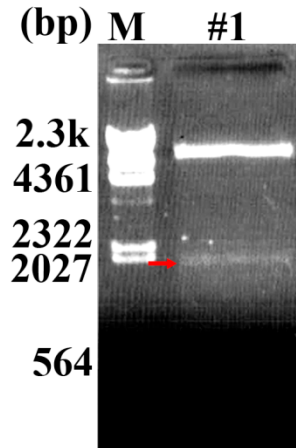


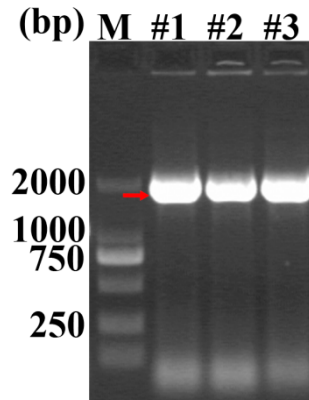
## Supplementary Materials

Table S1. Table of quantitative PCR primers

| Primer name  | Forward (5'-3')      | Reverse (5'-3')      |
|--------------|----------------------|----------------------|
| Nt18S        | GACATGGGTCAGGGCTTAGG | CCCAGTATCAACTCCCGCTG |
| NtCu/Zn-SOD1 | AGATGAGGTGCGTCATGCTG | GGAGGCCGATGATACCACAA |
| NtAPX2       | CACCAGTTGAAGGTCGCTTG | CAAGGTCCCTCGAAACCAGA |



**Figure S1.** Identification of the binary plant expression vector *pGWB18-PtWRKY33* by double restriction enzyme digestion.



**Figure S2.** PCR detection of *Agrobacterium tumefaciens* EHA105 containing *pGWB18-PtWRKY33*