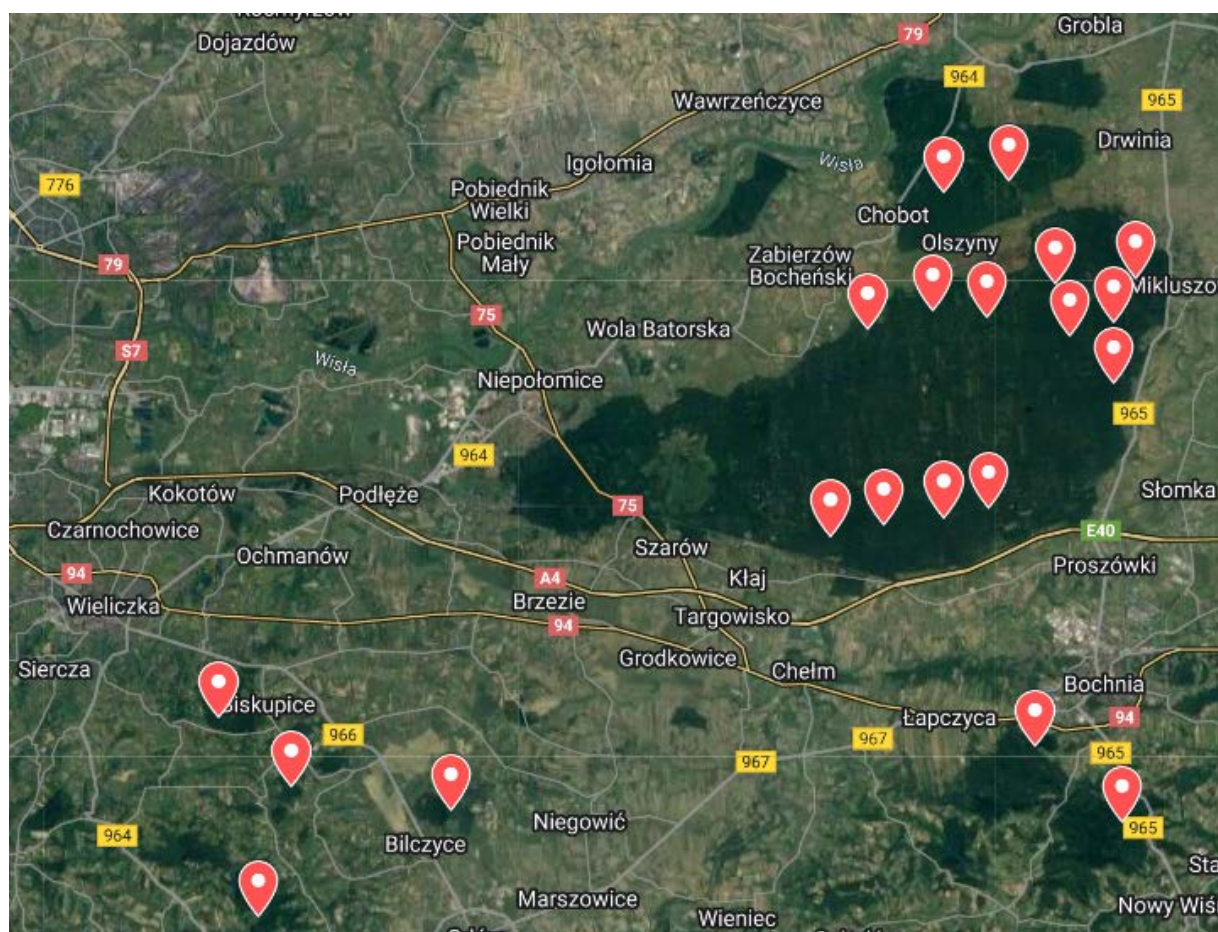
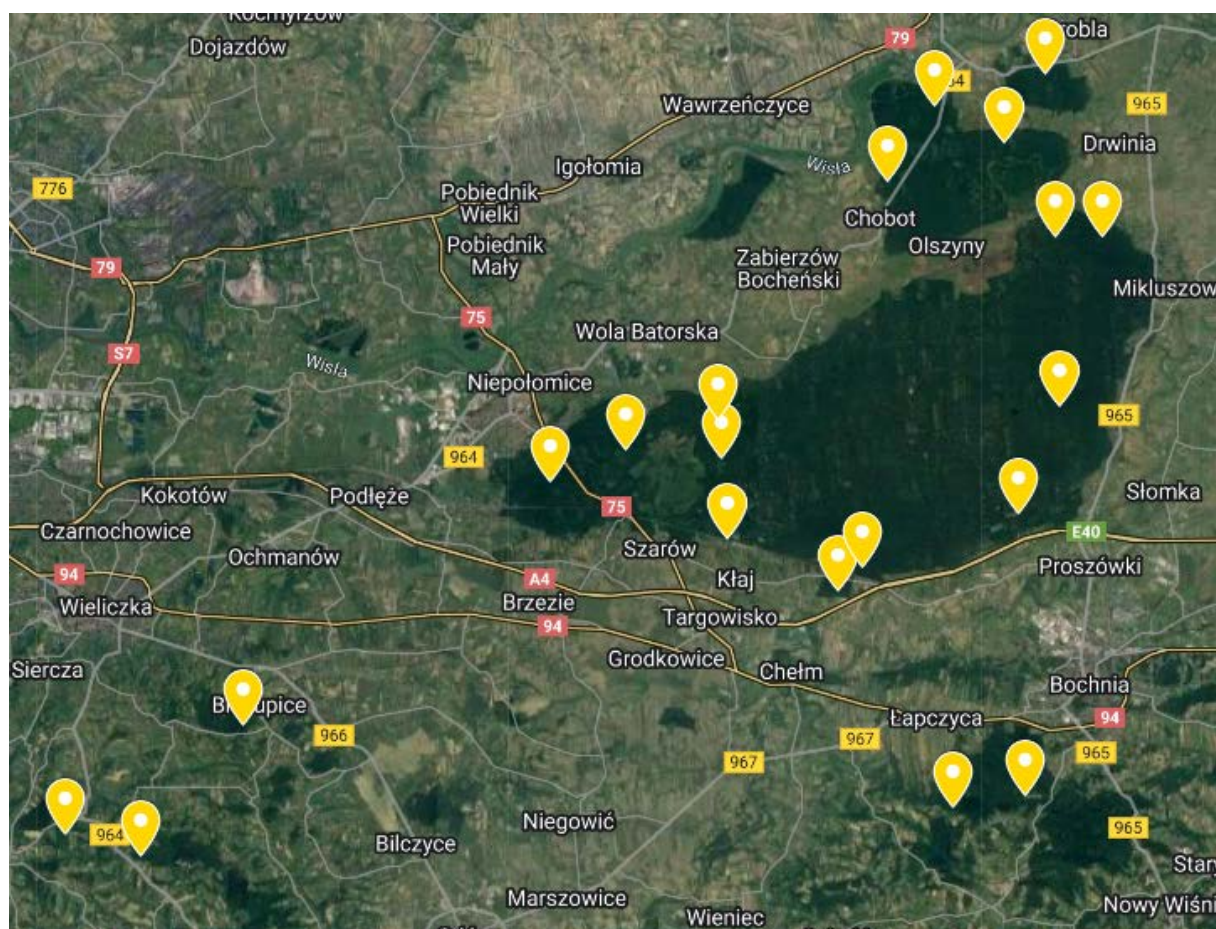


Figure S2. Localization of long-term territories of Ural owls.



<https://www.google.com/maps/d/u/0/edit?mid=1dDKLrzDjHJqBKml0Q-cpnctLxciwX0E&usp=sharing>

Figure S3. Localization of control sites (unoccupied by goshawks and Ural owls).



<https://www.google.com/maps/d/u/0/edit?mid=1n9GFdZeh88wW2PHBCC8i1sBqbp7f0VI&usp=sharing>

Table S1. Localization of examined plots with their assignment to the raptor occurrence (AG - goshawk, SU - Ural owl), and forest type (deciduous vs coniferous).

ID	AG	SU	deciduous	coniferous	E	N
AG01	1	1	1	0	49.935563°	20.436737°
AG02	1	0	1	0	49.946019°	20.386881°
AG03	1	1	1	0	49.960601°	20.102884°
AG04	1	1	1	0	49.938496°	20.188545°
AG05	1	1	1	0	49.913129°	20.117545°
AG06	1	0	1	0	50.105831°	20.355875°
AG07	1	1	1	0	50.085433°	20.370739°
AG08	1	0	1	0	50.109331°	20.422803°
AG09	1	1	1	0	50.057139°	20.366286°
AG10	1	0	1	0	50.010188°	20.422559°
AG11	1	0	0	1	49.997116°	20.359879°
AG12	1	0	0	1	49.999108°	20.379190°
AG13	1	1	0	1	50.003909°	20.328729°
AG14	1	0	0	1	50.012164°	20.294353°
AG15	1	0	0	1	50.038341°	20.322379°
AG16	1	0	0	1	50.006977°	20.240650°
AG17	1	0	0	1	50.025881°	20.239020°
AG18	1	1	0	1	50.054430°	20.433175°
AG19	1	0	0	1	50.027040°	20.429689°
AG20	1	1	0	1	50.063933°	20.412228°
SU01	1	1	1	0	49.935563°	20.436737°
SU02	0	1	1	0	49.953866°	20.404497°
SU03	1	1	1	0	49.960601°	20.102884°
SU04	0	1	1	0	49.943961°	20.129384°
SU05	1	1	1	0	49.938496°	20.188545°
SU06	1	1	1	0	49.913129°	20.117545°
SU07	1	1	1	0	50.085433°	20.370739°
SU08	0	1	1	0	50.088012°	20.394451°
SU09	0	1	1	0	50.052604°	20.342697°
SU10	1	1	1	0	50.057139°	20.366286°
SU11	0	1	0	1	50.010336°	20.387019°
SU12	0	1	0	1	50.055855°	20.386242°
SU13	0	1	0	1	50.008323°	20.370572°
SU14	0	1	0	1	50.006350°	20.348568°
SU15	1	1	0	1	50.003909°	20.328729°
SU16	0	1	0	1	50.065236°	20.441182°
SU17	1	1	0	1	50.054430°	20.433175°
SU18	0	1	0	1	50.039724°	20.433205°
SU19	0	1	0	1	50.051473°	20.417139°
SU20	1	1	0	1	50.063933°	20.412228°
control01	0	0	1	0	49.942145°	20.405477°
control02	0	0	1	0	49.939426°	20.378882°
control03	0	0	1	0	49.958618°	20.115324°
control04	0	0	1	0	49.927276°	20.076644°
control05	0	0	1	0	49.932572°	20.048563°

control06	0	0	1	0	50.106711°	20.371818°
control07	0	0	1	0	50.088983°	20.355260°
control08	0	0	1	0	50.098294°	20.398520°
control09	0	0	1	0	50.114543°	20.413535°
control10	0	0	1	0	49.991028°	20.336064°
control11	0	0	0	1	50.009404°	20.403816°
control12	0	0	0	1	50.022638°	20.293028°
control13	0	0	0	1	50.003407°	20.295283°
control14	0	0	0	1	50.031878°	20.291671°
control15	0	0	0	1	49.996794°	20.345157°
control16	0	0	0	1	50.016979°	20.229204°
control17	0	0	0	1	50.024625°	20.257488°
control18	0	0	0	1	50.075773°	20.417469°
control19	0	0	0	1	50.075432°	20.434284°
control20	0	0	0	1	50.035110°	20.418587°

Table S2. Diversity of birds detected during wintering and breeding counts on selected plots.

[illegible]

Table S3. Basic statistics describing bird diversity metrics and

Variable	Group	Mean	Median	Min	Max	SD	SE
wintering & deciduous							
Richness	goshawk	18.6	18.5	15.0	24.0	2.6	0.8
	Ural owl	18.6	18.5	13.0	24.0	3.2	1.0
	control	13.5	14.0	10.0	17.0	2.2	0.7
Abundance	goshawk	63.3	58.5	30.0	95.0	21.1	6.7
	Ural owl	61.0	58.5	37.0	85.0	18.6	5.9
	control	35.9	34.5	20.0	51.0	10.5	3.3
Natura	goshawk	2.3	2.5	0.0	4.0	1.2	0.4
	Ural owl	1.8	1.5	0.0	4.0	1.4	0.4
	control	0.7	0.0	0.0	4.0	1.3	0.4
wintering & coniferous							
Richness	goshawk	12.8	12.5	10.0	17.0	2.5	0.8
	Ural owl	13.1	13.0	9.0	17.0	2.9	0.9
	control	12.2	12.5	9.0	15.0	2.0	0.6
Abundance	goshawk	39.6	33.5	24.0	72.0	16.4	5.2
	Ural owl	32.3	31.0	20.0	47.0	9.1	2.9
	control	32.2	29.5	24.0	47.0	7.3	2.3
Natura	goshawk	0.1	0.0	0.0	1.0	0.3	0.1
	Ural owl	0.3	0.0	0.0	1.0	0.5	0.2
	control	0.5	0.0	0.0	2.0	0.7	0.2
breeding & deciduous							
Richness	goshawk	33.7	32.5	28.0	42.0	4.7	1.5
	Ural owl	33.3	32.5	29.0	37.0	3.2	1.0
	control	25.2	25.5	19.0	30.0	3.3	1.1
Abundance	goshawk	75.2	68.5	60.0	102.0	13.0	4.1
	Ural owl	73.0	71.5	61.0	85.0	7.7	2.4
	control	49.3	47.0	36.0	60.0	7.1	2.3
Natura	goshawk	4.8	5.0	2.0	6.0	1.4	0.4
	Ural owl	4.8	5.0	3.0	6.0	1.2	0.4
	control	0.9	0.5	0.0	3.0	1.1	0.3
breeding & coniferous							
Richness	goshawk	23.8	24.0	18.0	27.0	2.6	0.8
	Ural owl	25.3	24.5	20.0	32.0	3.4	1.1
	control	22.9	22.5	18.0	31.0	3.9	1.2
Abundance	goshawk	53.6	53.5	44.0	62.0	5.4	1.7
	Ural owl	56.1	57.0	43.0	69.0	8.9	2.8
	control	52.5	51.0	38.0	74.0	9.6	3.0
Natura	goshawk	2.2	1.0	0.0	7.0	2.1	0.7
	Ural owl	2.2	1.5	0.0	7.0	2.0	0.6
	control	1.1	1.0	0.0	3.0	0.9	0.3
environmental variables							
OldTrees	goshawk	20.8	13.3	0.0	90.4	25.9	5.8
	Ural owl	14.9	6.3	0.0	83.7	21.0	4.7
	control	6.9	4.5	0.0	19.7	6.7	1.5
Stumps	goshawk	9.4	6.8	0.0	36.9	10.6	2.4
	Ural owl	6.1	2.7	0.0	30.5	7.9	1.8
	control	23.6	5.5	0.0	130.6	33.0	7.4

ClearCuts	goshawk	2.8	0.0	0.0	28.0	7.0	1.6
	Ural owl	2.8	0.0	0.0	19.0	5.3	1.2
	control	7.5	6.0	0.0	20.0	7.5	1.7
DeadWood	goshawk	93.2	75.8	5.9	341.9	78.9	17.6
	Ural owl	82.0	66.6	20.4	341.9	70.2	15.7
	control	36.5	30.6	5.2	74.2	19.1	4.3

Table S4. Values of basic environmental variables collected for selected plots.

site ID	Wood (type)	OldTrees	ClearCuts	DeadWood	Stumps
AG01	1	11.7	8	44.7	15.5
AG02	1	23.7	0	122.6	10.8
AG03	1	27.9	0	100.0	14.0
AG04	1	16.3	0	103.1	10.2
AG05	1	9.2	5	78.2	16.1
AG06	1	90.4	0	257.4	0.0
AG07	1	83.7	0	341.9	0.0
AG08	1	13.1	0	41.1	7.5
AG09	1	30.0	0	121.4	0.0
AG10	1	50.5	0	115.8	0.0
AG11	0	1.5	0	65.4	2.3
AG12	0	1.6	0	36.8	19.6
AG13	0	4.4	0	77.9	1.5
AG14	0	5.8	0	89.4	14.5
AG15	0	16.5	0	71.1	1.3
AG16	0	15.3	28	46.7	36.9
AG17	0	13.4	0	23.7	6.2
AG18	0	0.0	0	47.5	1.5
AG19	0	0.0	0	5.9	0.0
AG20	0	1.5	14	73.7	30.5
SU01	1	11.7	8	44.7	15.5
SU02	1	36.6	0	157.0	0.0
SU03	1	27.9	0	100.0	14.0
SU04	1	19.4	0	107.5	6.5
SU05	1	16.3	0	103.1	10.2
SU06	1	9.2	5	78.2	16.1
SU07	1	83.7	0	341.9	0.0
SU08	1	13.1	0	41.1	7.5
SU09	1	7.4	0	44.4	0.0
SU10	1	30.0	0	121.4	0.0
SU11	0	5.1	19	20.4	8.2
SU12	0	3.0	0	59.5	3.0
SU13	0	2.4	4	75.0	2.4
SU14	0	2.6	0	47.0	0.0
SU15	0	4.4	0	77.9	1.5
SU16	0	0.0	0	34.7	0.0
SU17	0	0.0	0	47.5	1.5
SU18	0	0.0	6	37.4	0.7
SU19	0	3.9	0	33.0	3.9
SU20	0	1.5	14	73.7	30.5
unocup01	1	10.4	20	5.2	51.9
unocup02	1	10.3	14	21.8	43.6
unocup03	1	19.7	17	28.9	44.7
unocup04	1	11.5	0	51.9	0.0
unocup05	1	5.6	0	9.0	20.2
unocup06	1	19.2	12	23.1	57.7

unocup07	1	7.5	18	22.6	23.6
unocup08	1	6.3	8	35.8	0.0
unocup09	1	15.0	0	73.5	4.7
unocup10	1	17.6	0	48.9	31.3
unocup11	0	0.7	0	22.7	0.7
unocup12	0	0.9	0	28.8	0.0
unocup13	0	1.8	16	74.2	1.8
unocup14	0	3.1	4	30.0	6.3
unocup15	0	3.3	0	34.3	0.0
unocup16	0	0.7	3	60.4	0.7
unocup17	0	2.5	0	29.5	0.8
unocup18	0	1.5	9	31.3	0.0
unocup19	0	0.0	13	41.6	130.6
unocup20	0	0.9	15	56.7	54.0
