

Table S1. Water conservation of land use in Hulunbuir forest-steppe ecotone from 2000 to 2020.

LULC types	2000		2005		2010		2015		2020	
	10 ⁸ m ³	%	10 ⁸ m ³	%	10 ⁸ m ³	%	10 ⁸ m ³	%	10 ⁸ m ³	%
Farmland	3.0021	7.3%	1.7794	8.4%	2.1463	12.5%	4.2935	9.3%	3.0056	9.4%
Woodland	16.7212	40.4%	7.7117	36.5%	7.6547	44.7%	25.5333	55.2%	17.0349	53.1%
Grassland	21.5904	52.2%	11.6028	54.9%	7.2544	42.4%	16.2204	35.1%	11.9453	37.2%
Unused land	0.0180	0.0%	0.0099	0.0%	0.0272	0.2%	0.0753	0.2%	0.0493	0.2%
Residential area	0.0630	0.2%	0.0294	0.1%	0.0329	0.2%	0.0925	0.2%	0.0713	0.2%
Water	0.0018	0.0%	0.0009	0.0%	0.0009	0.0%	0.0023	0.0%	0.0010	0.0%

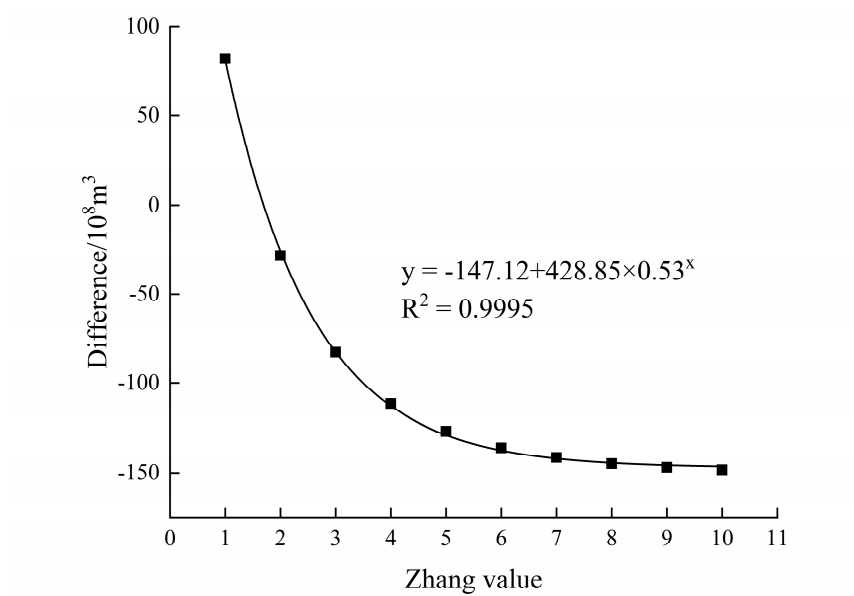


Figure S1. The difference between the simulated and measured water resources.

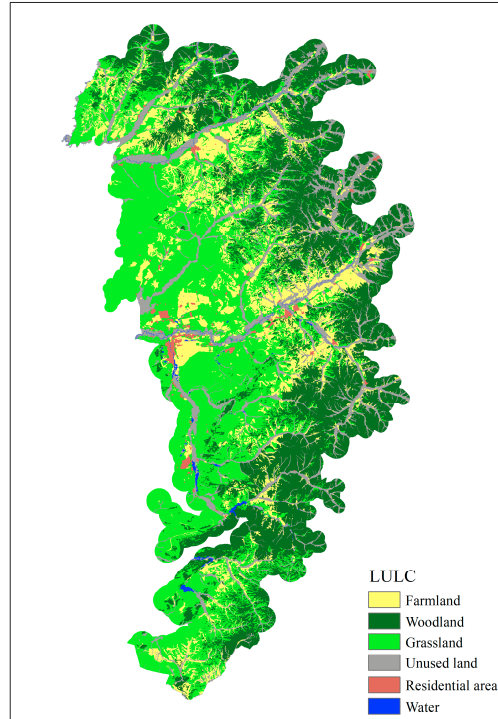


Figure S2. Spatial distribution of land use in forest-steppe ecotone in 2020.