

Supplemental material

Figure S1

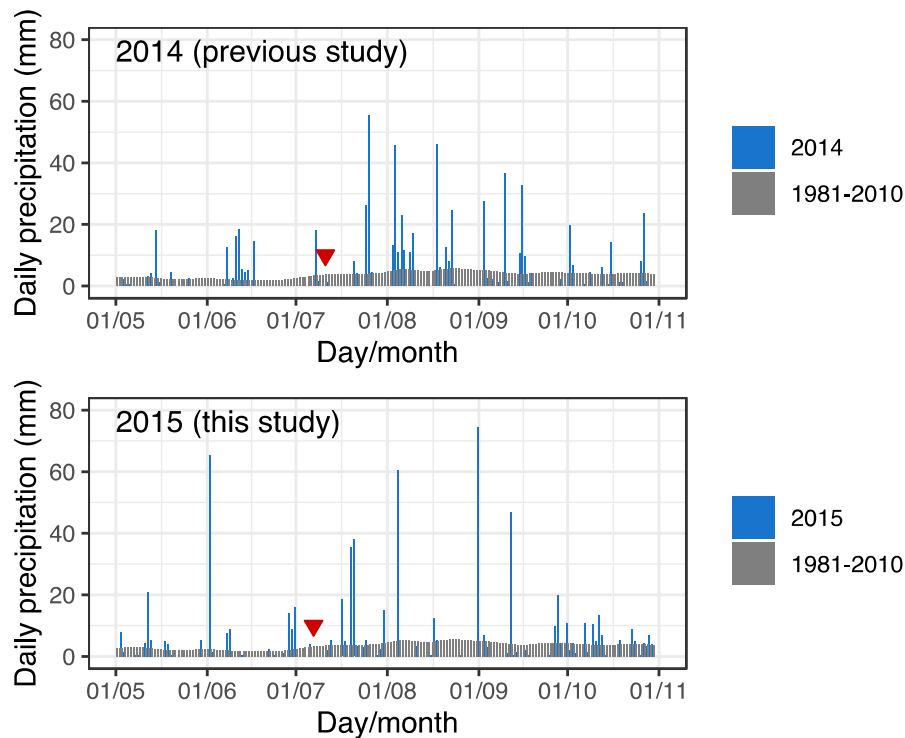


Figure S1. Daily precipitation during the growing season in a previous study (2014), this study (2015), and over the period of 1981–2010. The red inverted triangles represent planting dates. The data were collected at the Bibai weather station, which is approximately 14 km away from the study site.

Figure S2

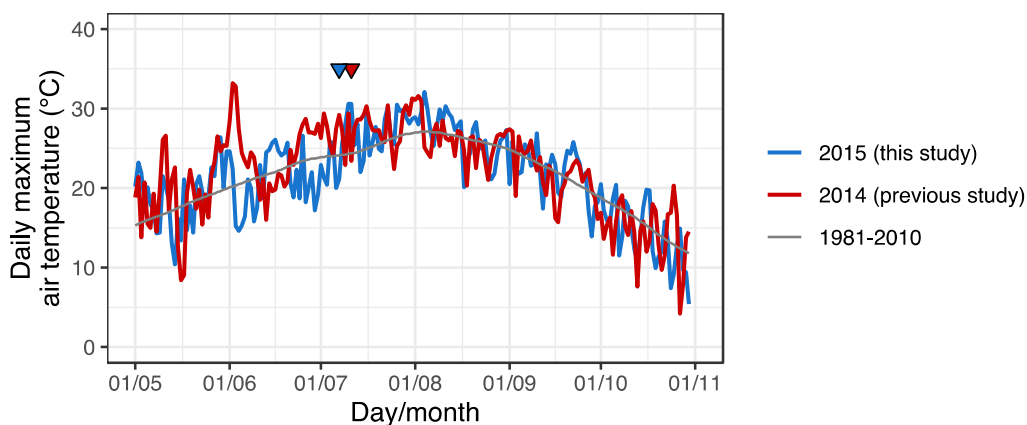


Figure S2. Daily maximum air temperatures during the growing season in a previous study (red, 2014), the current study (blue, 2015), and over the period of 1981–2010 (gray). The red and blue inverted triangles represent planting dates in the previous study and in this study, respectively. The data were collected at the Bibai weather station, which is approximately 14 km away from the study site.

Figure S3

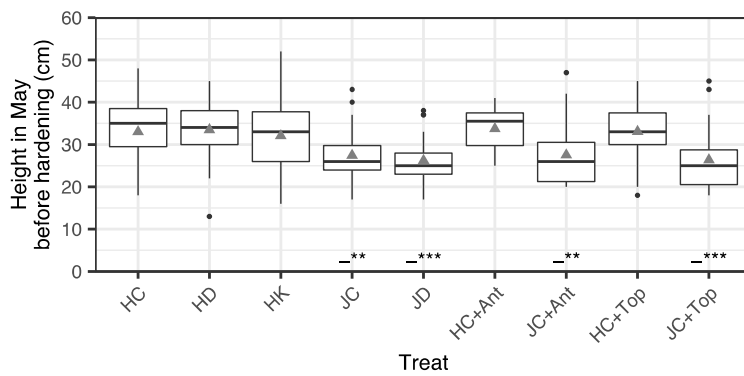


Figure S3. Boxplot with mean value (gray triangle, $n = 23\text{--}30$) of the height in May before each treatment for seedlings of Japanese larch grown in Hiko-V-120 (H) and JFA-150 (J) containers with control irrigation and fertilization (HC and JC), dry irrigation (HD and JD), high-potassium fertilization (HK), and application of the antitranspirant (+Ant) and topping (+Top). The plus or minus sign indicates a positive or a negative effect compared with the HC treatment in the generalised linear mixed model. * $P < 0.05$, ** $P < 0.01$, and *** $P < 0.001$.