

Preparation of chitin nanofibers and natural rubber composites and their triboelectric nanogenerator applications

Kattaliya Petchnui ¹, Teerayut Uwanno ¹, Mayuree Phonyiem Reilly ¹, Chinathun Pinming ¹, Alongkot Treetong ², Visittapong Yordsri ³, Nutthanun Moolsradoo ⁴, Annop Klamcheun ² and Winadda Wongwiriyan ^{1,*}

¹ College of Materials Innovation and Technology, King Mongkut's Institute of Technology Ladkrabang, Chalongkrung Rd., Ladkrabang, Bangkok 10520, Thailand; kattaliya.pang@gmail.com (K.P.); teerayut.uw@kmitl.ac.th (T.U.); mayuree.ph@kmitl.ac.th (M.P.R.); chinathun.aron@gmail.com (C.P.)

² National Nanotechnology Center (NANOTEC), National Science and Technology Development Agency (NSTDA), 111 Thailand Science Park, Paholyothin Rd., Klong Nueng, Klong Luang, Pathum Thani 12120, Thailand; alongkot@nanotec.or.th (A.T.); annop@nanotec.or.th (A.K.)

³ National Metal and Materials Technology Center (MTEC), National Science and Technology Development Agency (NSTDA), 111 Thailand Science Park, Paholyothin Rd., Klong Nueng, Klong Luang, Pathum Thani 12120, Thailand; visittay@mtect.or.th

⁴ Department of Production Technology Education, Faculty of Industrial Education and Technology, King Mongkut's University of Technology Thonburi, 126 Pracha Uthit Rd., Thung Khru, Bangkok 10140, Thailand; nutthanun.moo@kmutt.ac.th

* Correspondence: winadda.wo@kmitl.ac.th

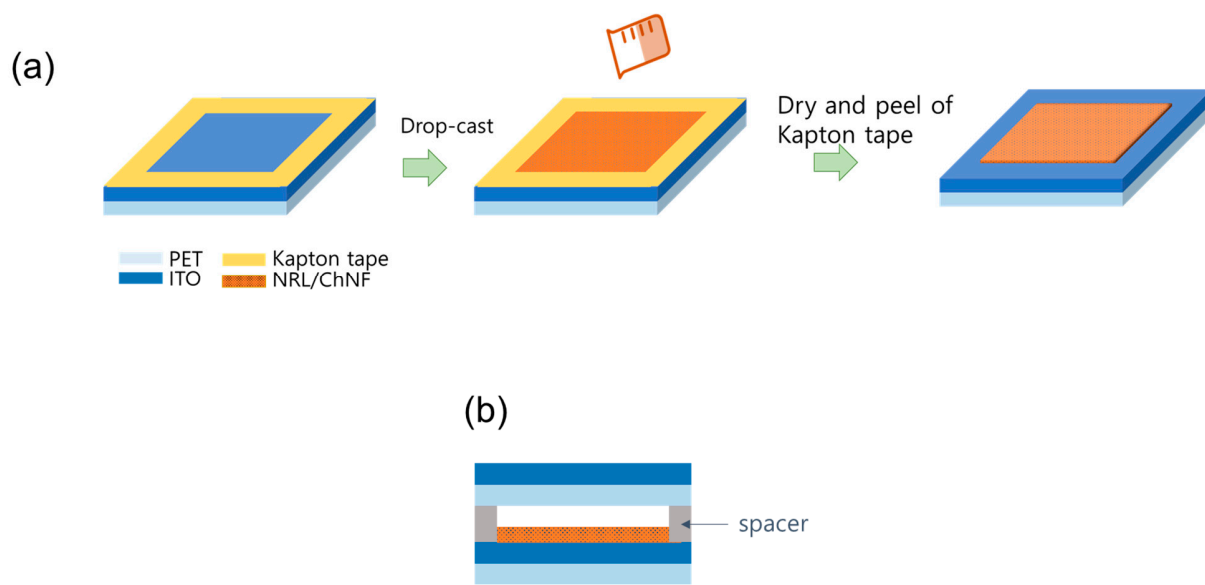


Figure S1. Schematic views of (a) the NRL/ChNF triboelectric layer preparation process (b) TENG device.

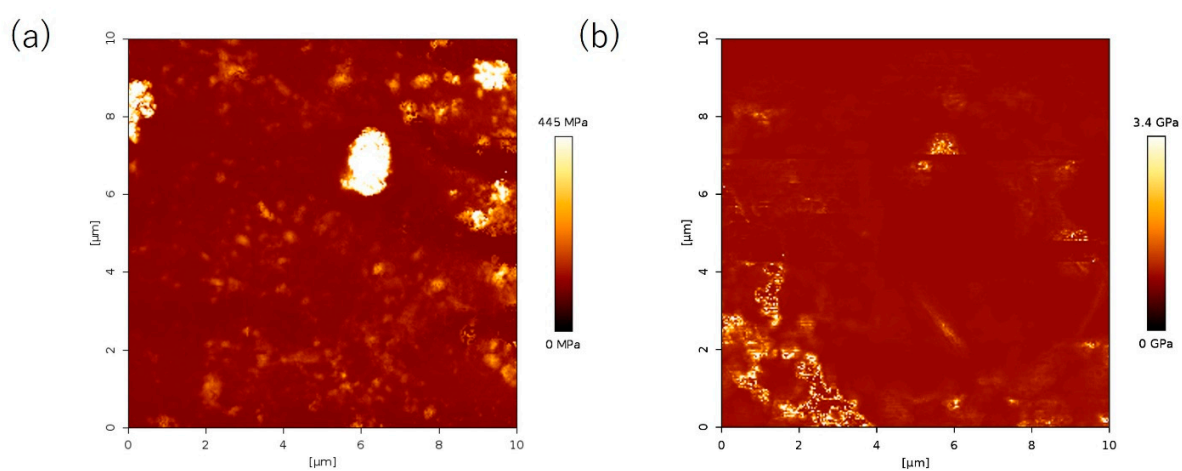


Figure S2. AFM images of Young's modulus mapping of (a) NRL and (b) ChNF0.2