

## **Atherosclerotic-Derived Endothelial Cell Response Conducted**

### **by Titanium Oxide Nanotubes**

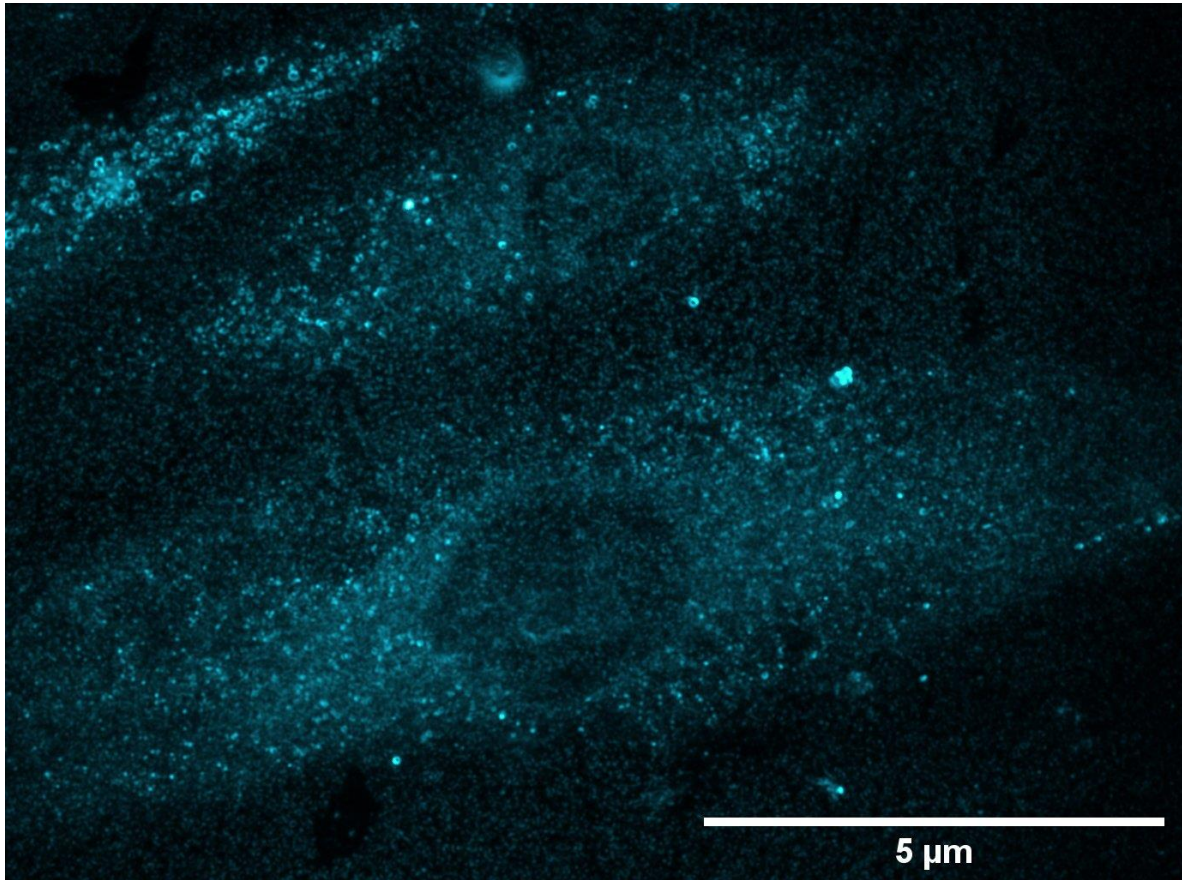
Ernesto Beltrán-Partida<sup>1</sup>, Benjamín Valdez Salas<sup>\*1</sup>, Martha García-López Portillo<sup>1</sup>, Claudia Gutierrez-Perez<sup>1</sup>, Sandra Castillo-Urbe<sup>1</sup>, Jorge Salvador-Carlos<sup>1</sup>, José Alcocer-Cañez<sup>2</sup>, Nelson Cheng<sup>3</sup>

<sup>1</sup> Laboratorio de Biología Molecular y Cáncer, Instituto de Ingeniería, Universidad Autónoma de Baja California, Blvd. Benito Juárez y Calle de la Normal s/n, Mexicali C.P. 21040, Baja California, México

<sup>2</sup> Coordinación Clínica de Cirugía, Hospital General de Zona No. 30, Instituto Mexicano del Seguro Social (IMSS), Av. Lerdo de Tejada s/n, Mexicali C.P. 21100, Baja California, México

<sup>3</sup> Magna International Pte Ltd., 10 H Enterprise Road, Singapore 629834, Singapore

\* Correspondence: [benva1@uabc.edu.mx](mailto:benva1@uabc.edu.mx)



**Figure S1.** Immunofluorescence micrograph of the endothelial receptor to the von Willebrand factor of the isolated AThEC shows a positive response.