

Effect of Graphene Addition on the Thermal and Persistent Luminescence Properties of $\text{Gd}_{2.994}\text{Ce}_{0.006}\text{Ga}_3\text{Al}_2\text{O}_{12}$ and $\text{Gd}_{2.964}\text{Ce}_{0.006}\text{Dy}_{0.03}\text{Ga}_3\text{Al}_2\text{O}_{12}$ Ceramics

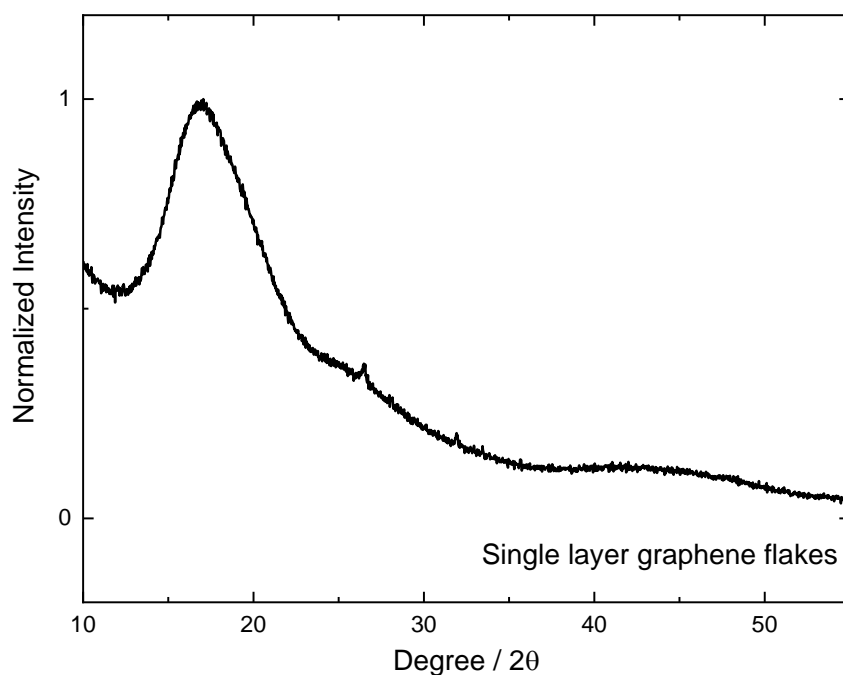


Figure S1. XRD of commercial single layer graphene flakes.

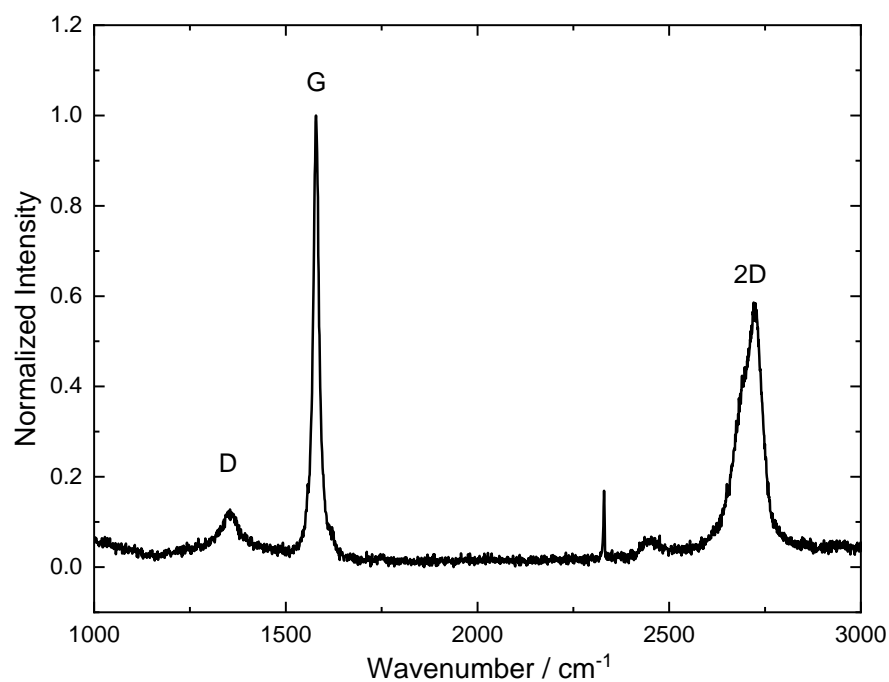


Figure S2. Raman spectrum of commercial single layer graphene flakes.

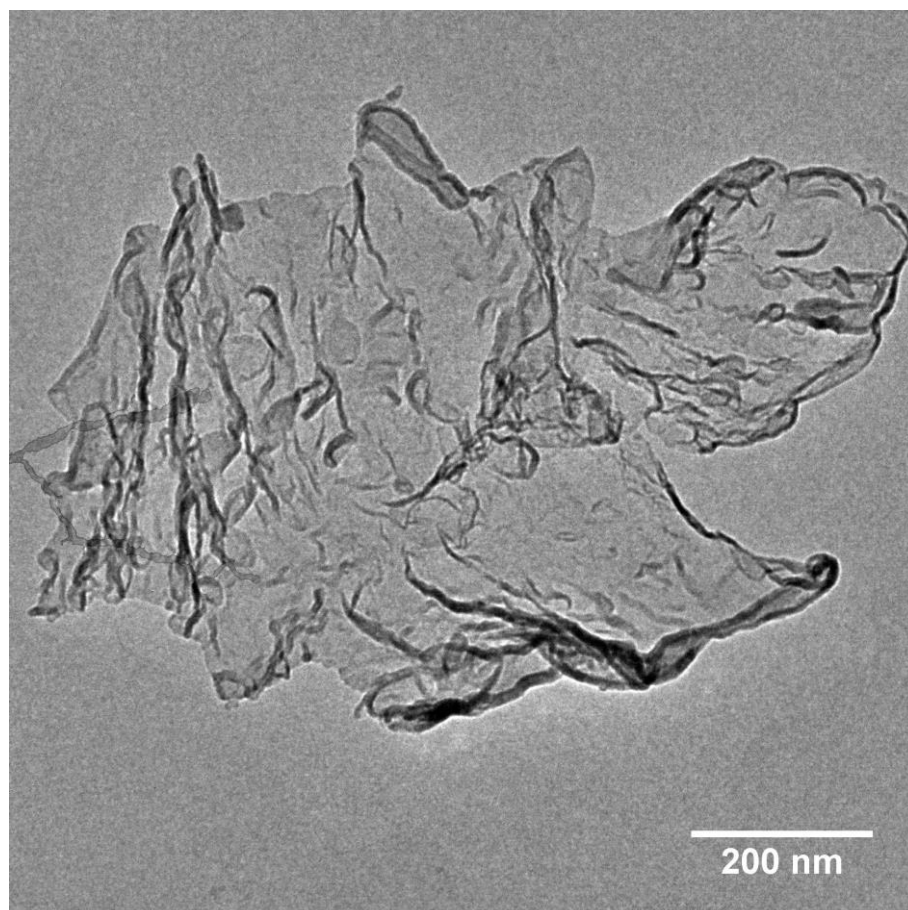


Figure S3. TEM image of commercial single layer graphene flake.