

# Role of Silver Nanoparticle-Doped 2-Aminodiphenylamine Polymeric Material in the Detection of Dopamine (DA) with Uric Acid Interference

Harjot Kaur <sup>1</sup>, Karamveer Sheoran <sup>1</sup>, Samarjeet Singh Siwal <sup>1,\*</sup>, Reena V. Saini <sup>2</sup>, Adesh Kumar Saini <sup>2</sup>, Walaa F. Alsanie <sup>3</sup> and Vijay Kumar Thakur <sup>4,5,\*</sup>

<sup>1</sup> Department of Chemistry, Maharishi Markandeshwar Engineering College, Maharishi Markandeshwar (Deemed to be University), Mullana, Ambala, 133207, India; hk6436929@gmail.com (H.K.); karm-sheoran031@gmail.com (K.S.)

<sup>2</sup> Department of Biotechnology, Maharishi Markandeshwar (Deemed to be University), Mullana, Ambala, 133207, India; reenavohra10@gmail.com (R.V.S.); sainiade@gmail.com (A.K.S.)

<sup>3</sup> Department of Clinical Laboratories Sciences, The Faculty of Applied Medical Sciences, Taif University, P.O. Box 11099, Taif 21944, Saudi Arabia; w.alsanie@tu.edu.sa

<sup>4</sup> Biorefining and Advanced Materials Research Center, Scotland's Rural College (SRUC), Kings Buildings, West Mains Road, Edinburgh EH9 3JG, UK;

<sup>5</sup> School of Engineering, University of Petroleum & Energy Studies (UPES), Dehradun 248007, India

\* Correspondence: samarjeet6j1@gmail.com (S.S.S.); Vijay.Thakur@sruc.ac.uk (V.K.T.)

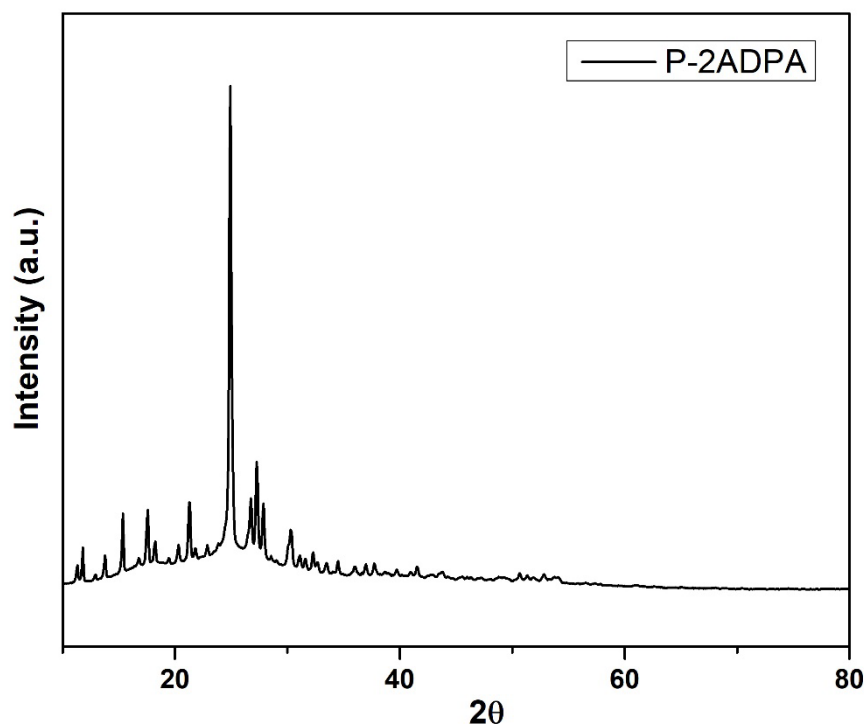
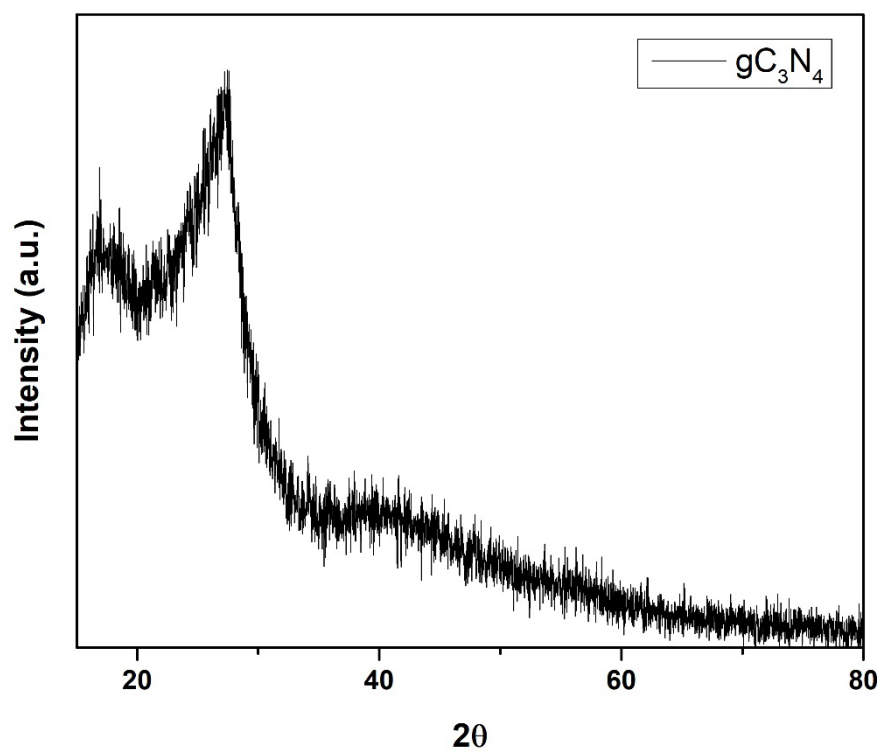
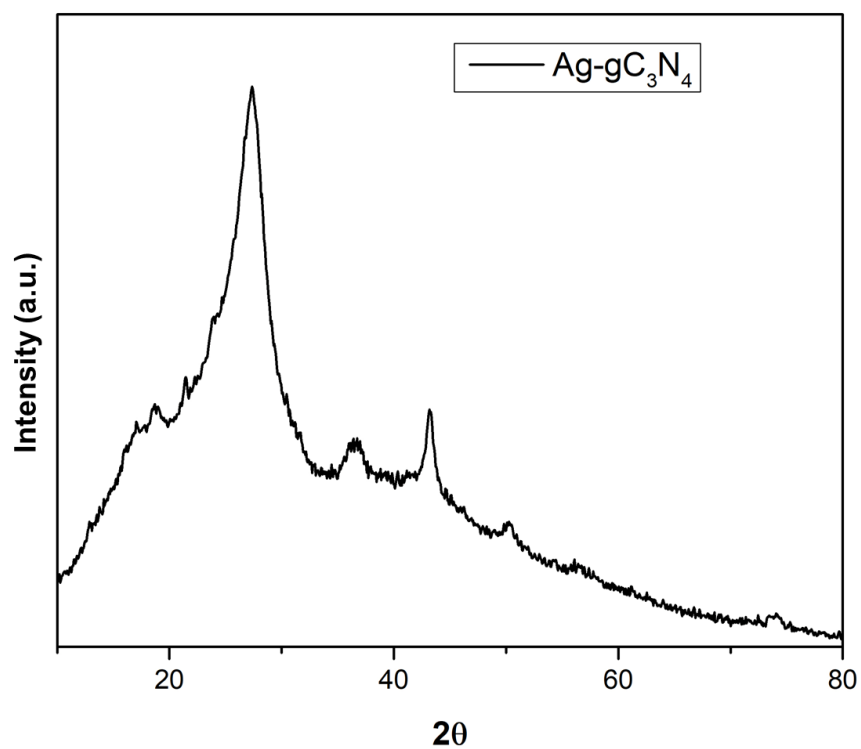


Figure S1. XRD pattern of P-2ADPA.



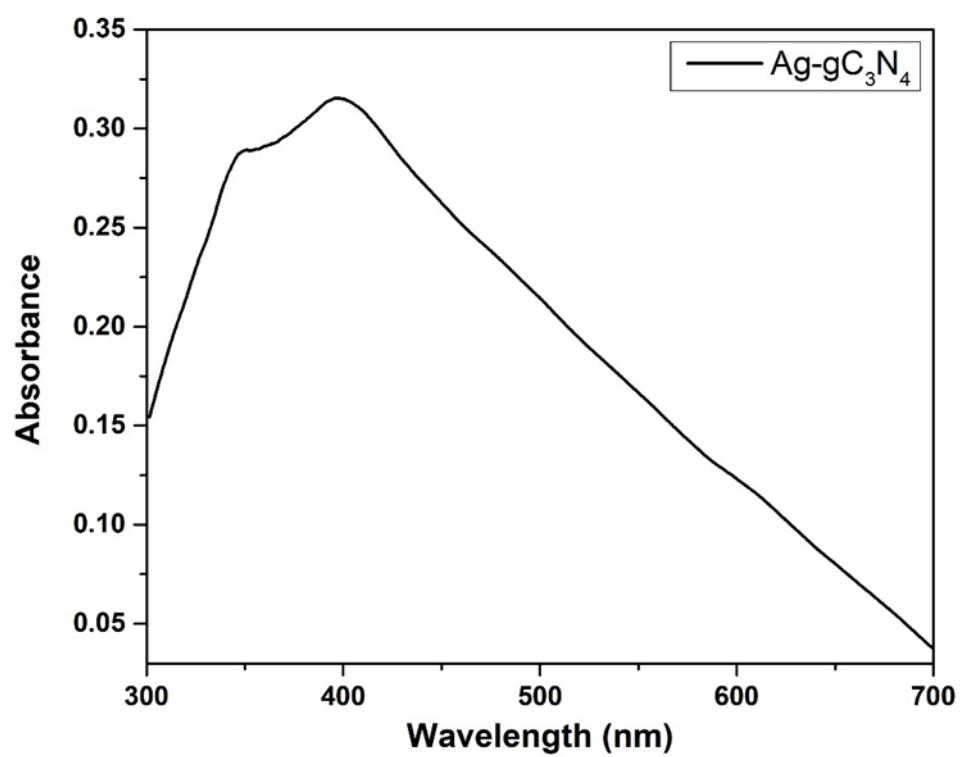
**Figure S2.** XRD pattern of gC<sub>3</sub>N<sub>4</sub>.

**Figure S2** indicates the XRD pattern of the gC<sub>3</sub>N<sub>4</sub>, besides the carbon nitride peak at 27.33°.



**Figure S3.** XRD pattern of Ag-gC<sub>3</sub>N<sub>4</sub>.

**Figure S3** indicates the XRD pattern of the Ag-gC<sub>3</sub>N<sub>4</sub>; besides the carbon nitride peak at 27.33°, the other four peaks at 40.10°, 46.0°, 68.40, and 82.16° can be assigned to the metallic silver.



**Figure S4.** UV-vis spectrum of Ag-gC<sub>3</sub>N<sub>4</sub>.