

Supplementary data

Crystal structure and concentration driven phase transitions in $\text{Lu}_{1-x}\text{Sc}_x\text{FeO}_3$ ($0 \leq x \leq 1$) prepared by sol-gel method

A. Pakalniškis^{1,*}, D. O. Alikin², A.P. Turygin², A.L. Zhaludkevich³, M.V. Silibin^{4,5},
D.V. Zhaludkevich³, G. Niaura⁶, A. Zarkov¹, R. Skaudžius¹, D. V. Karpinsky^{3,7}, A. Kareiva¹

¹ Institute of Chemistry, Vilnius University, Naugarduko 24, LT-03225 Vilnius, Lithuania

² School of Natural Sciences and Mathematics, Ural Federal University, Ekaterinburg, Russia

³ Scientific-Practical Materials Research Centre of NAS of Belarus, 220072 Minsk, Belarus

⁴ National Research University of Electronic Technology "MIET", 124498 Moscow, Russia

⁵ Institute for Bionic Technologies and Engineering, I.M. Sechenov First Moscow State Medical University, Moscow 119991, Russia

⁶ Department of Organic Chemistry, Center for Physical Sciences and Technology (FTMC), Sauletekio Ave. 3, LT-10257, Vilnius, Lithuania

⁷ South Ural State University, av. Lenina, 76, 454080, Chelyabinsk, Russia

Corresponding author: A. Pakalniškis email: andrius.pakalniskis@chgf.vu.lt

Keywords: Phase transitions; structural phase stability; LuFeO_3 ; X-ray diffraction; Solid solutions

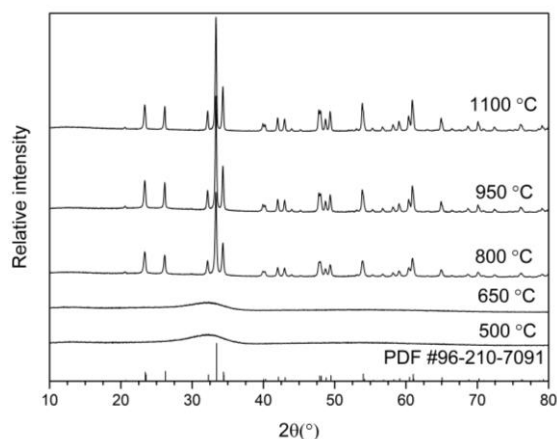


Figure S1. XRD patterns of LuFeO_3 prepared at different sintering temperatures

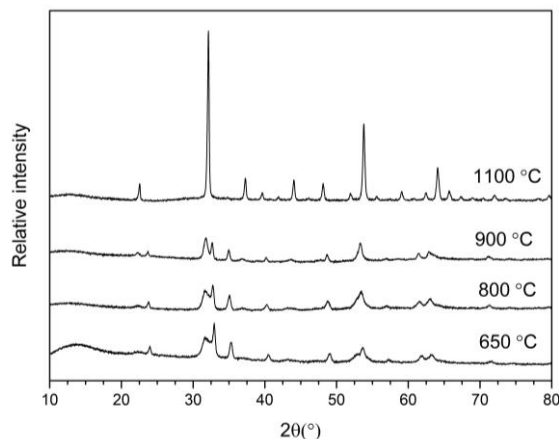


Figure S2. XRD patterns of ScFeO_3 prepared at different sintering temperatures

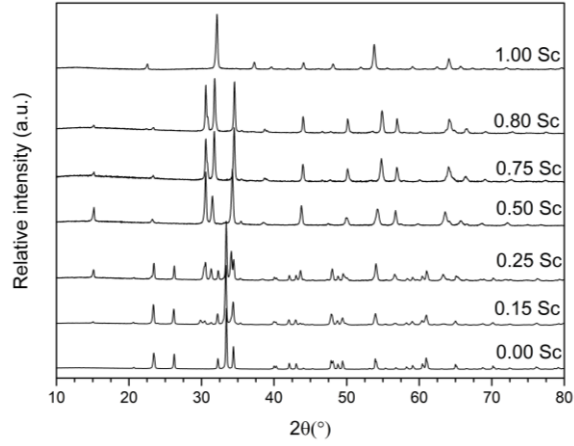


Figure S3. XRD patterns of $\text{Lu}_{1-x}\text{Sc}_x\text{FeO}_3$ ($0 \leq x \leq 1$)

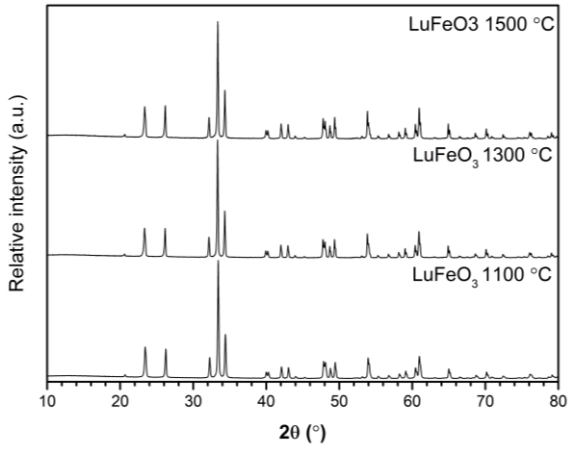


Figure S4. XRD patterns of LuFeO_3 additionally calcinated at different temperatures

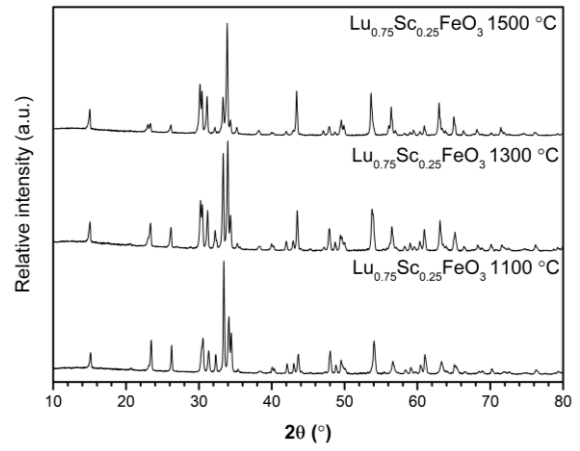


Figure S5. XRD patterns of $\text{Lu}_{0.75}\text{Sc}_{0.25}\text{FeO}_3$ additionally calcinated at different temperatures

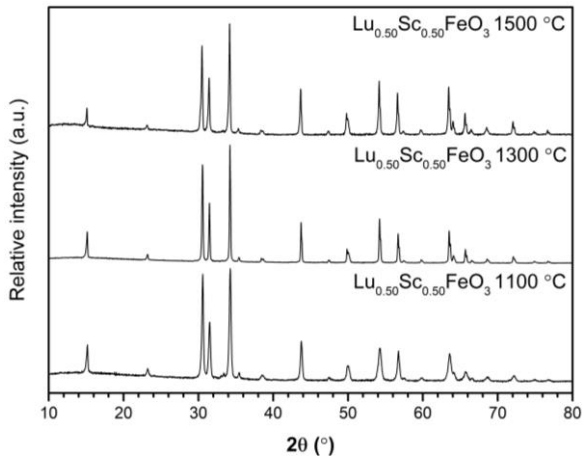


Figure S6. XRD patterns of $\text{Lu}_{0.50}\text{Sc}_{0.50}\text{FeO}_3$ additionally calcinated at different temperatures

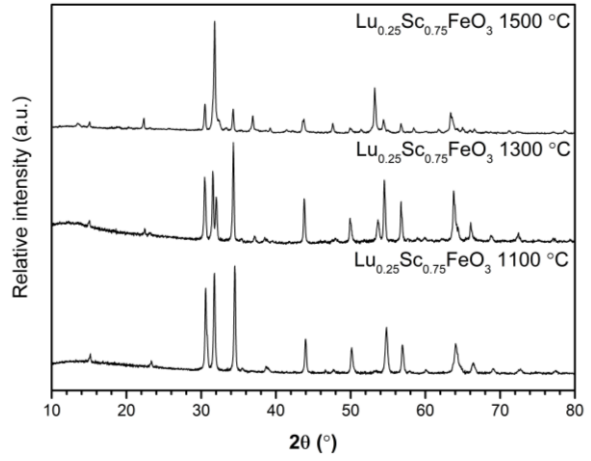


Figure S7. XRD patterns of $\text{Lu}_{0.25}\text{Sc}_{0.75}\text{FeO}_3$ additionally calcinated at different temperatures

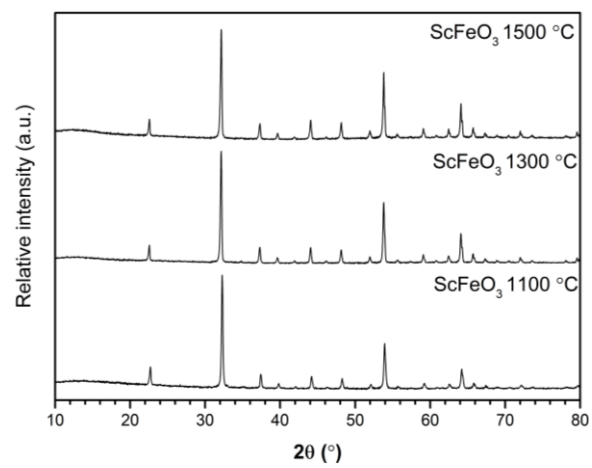


Figure S8. XRD patterns of ScFeO₃ additionally calcinated at different temperatures