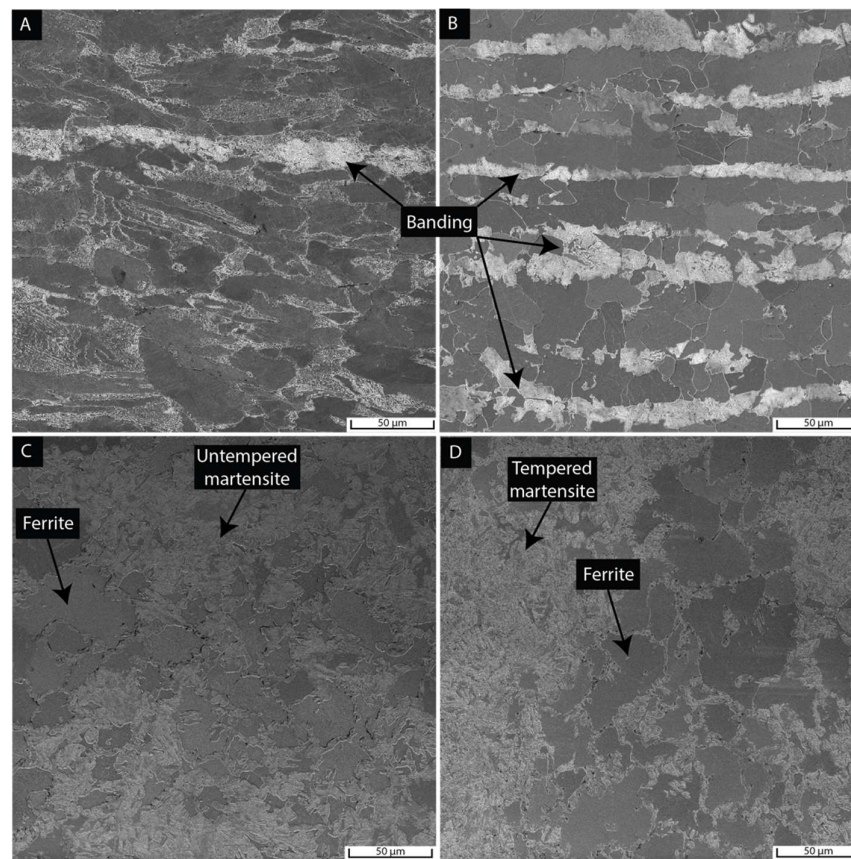
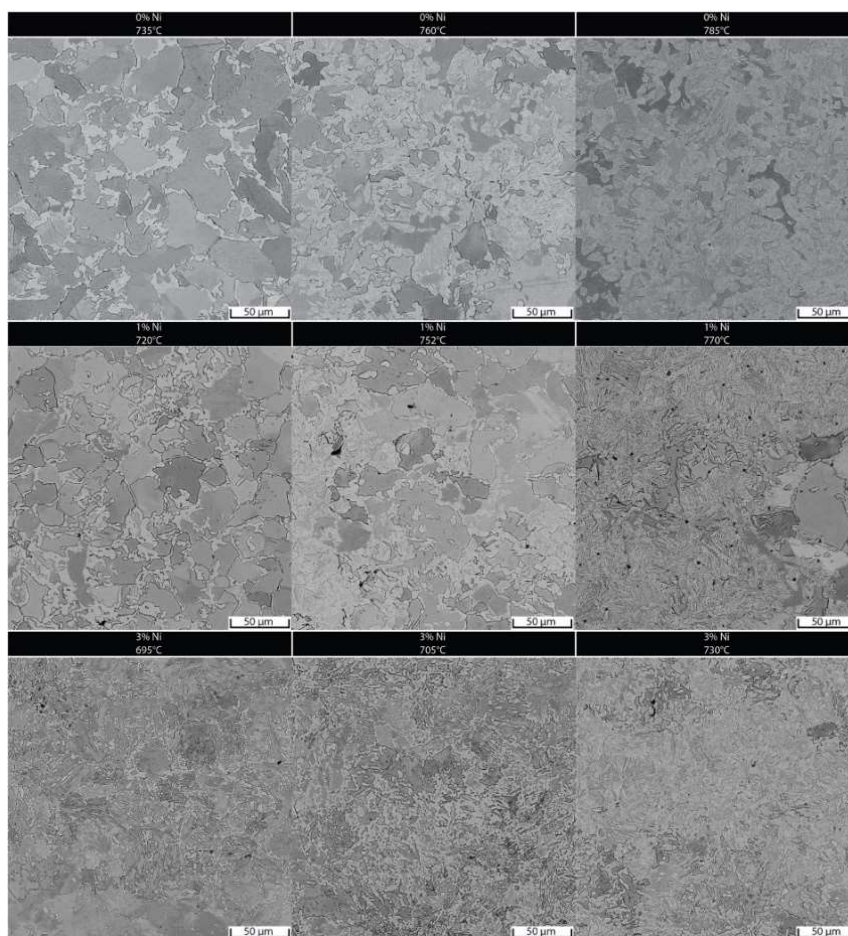


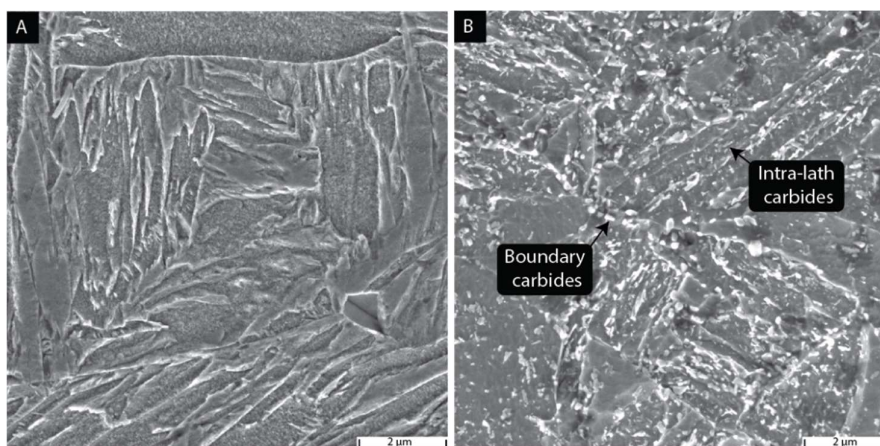
# Supplementary Materials



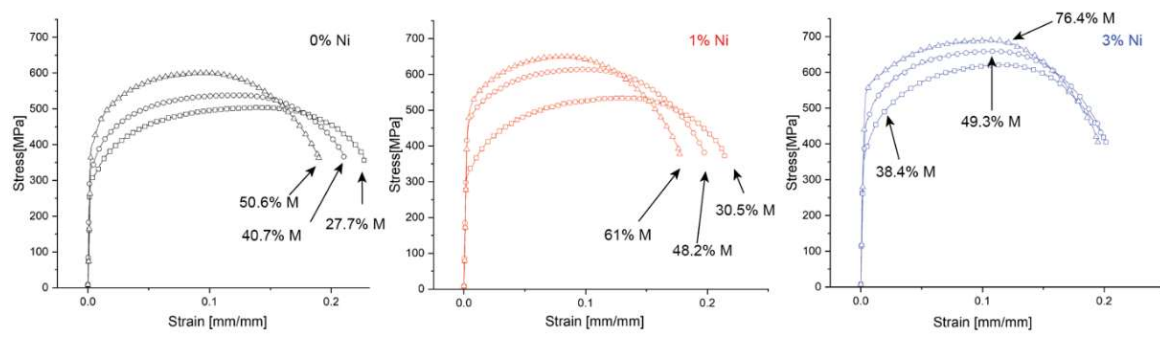
**Supplementary Figure S1.** SEM images of the heat-treated samples at different heat treatment stages for sample 1-wt% Ni DP\_70%. Micrographs represent the (A) As-received, (B) Annealed, (C) As-quenched, and (D) Tempered conditions.



**Supplementary Figure S2.** SEM images of samples with varying Ni content and intercritical annealing temperatures. Increasing martensite content with the increasing temperature.



**Supplementary Figure S3.** SEM images of 1-wt% Ni DP\_70% sample in the as-quenched condition (A) and after temper (B). Untempered martensite displays a needle and rough appearance while ferrite is present as a smooth area. Tempered microstructure displayed carbides at boundaries and within martensitic laths.



**Supplementary Figure S4.** Engineering tensile curves for varying Ni and martensite contents.