

Supporting Information

Water Kefir Grains - Microbial Biomass Source for Carbonaceous Materials Used as Sulfur-host Cathode in Li-S Batteries

Ana L. Páez Jerez¹, M. Fernanda Mori², Victoria Flexer¹ and Alvaro Y. Tesio^{1*}

¹CIDMEJu (CONICET-Universidad Nacional de Jujuy), Centro de Desarrollo Tecnológico General Savio, Av. Martijena S/N, Palpalá, Jujuy, 4612, Argentina

²Instituto de Investigaciones en Catálisis y Petroquímica, CONICET, Facultad de Ingeniería Química, Universidad Nacional del Litoral, Santiago del Estero 2829, S3000AOM Santa Fe, Argentina

* Correspondence: atesio@cidmeju.unju.edu.ar

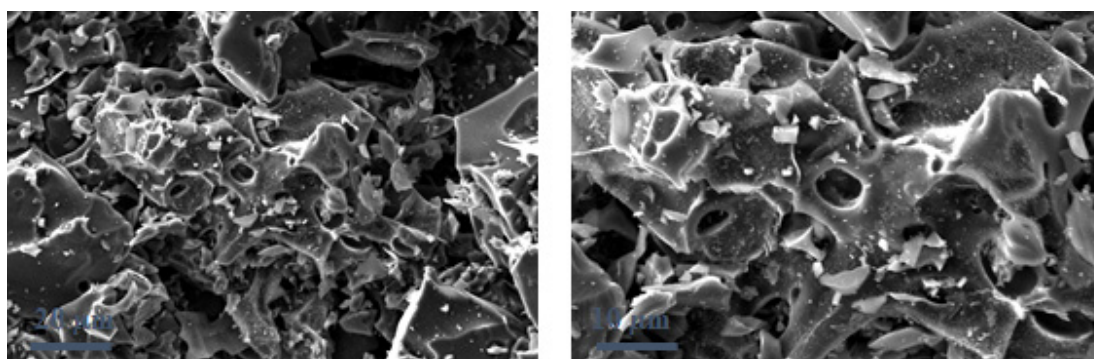


Figure S1. SEM images obtained for washed water kefir carbons measured at 20 and 10 μm .

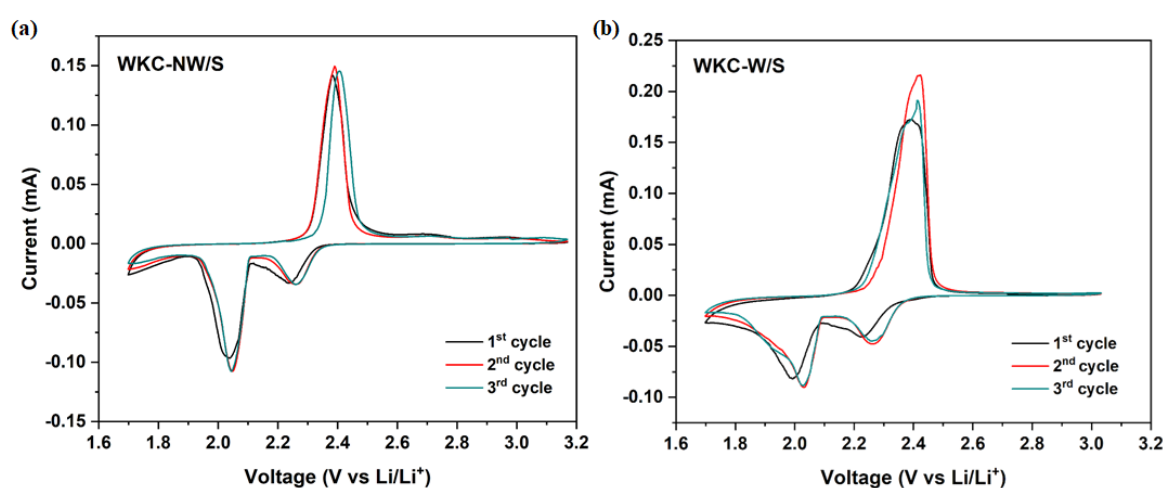


Figure S2. Three consecutive CV curves for WKC-NW/S (a) and WKC-W/S (b).

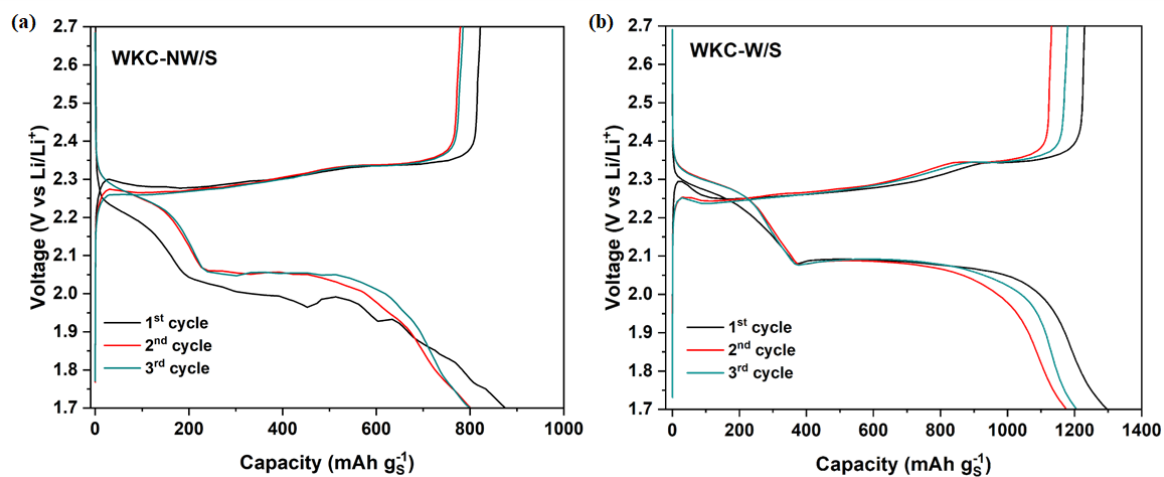


Figure S3. Three consecutive GCD profiles for WKC-NW/S (a) and WKC-W/S (b) at 0.1 C.

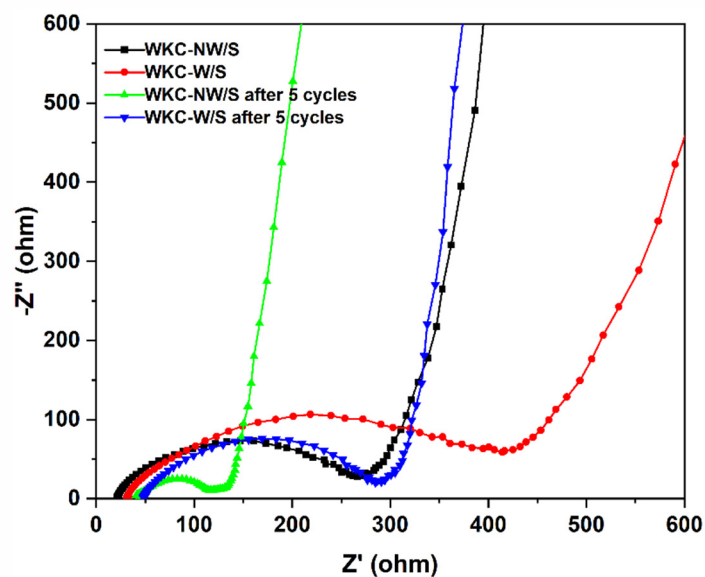


Figure S4. EIS spectra for WKC-NW/S and WKC-W/S before and after 5 cycles at 0.1 C.