

Impact of Glass Composition on Hydrolytic Degradation of Polylactide/Bioactive Glass Composites

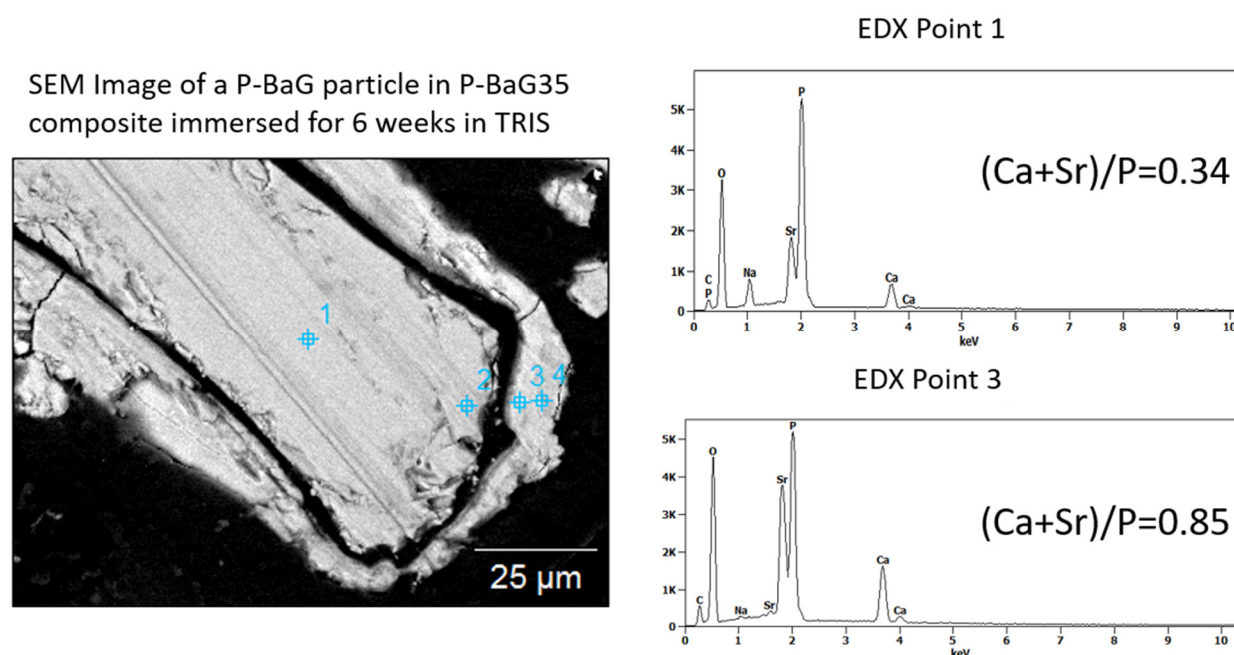


Figure S1. SEM image of a phosphate glass particle in the P-BaG35 composites immersed for six weeks in TRIS buffer solution along with the EDX spectrum of point 1 (unreacted glass) and point 3 (reactive layer).

The SEM image, in Figure S1, exhibits a partially reacted phosphate glass particle. The core of the particle corresponds to the unreacted glass, showing a (Ca+Sr)/P ratio of 0.34, in agreement with the theoretical glass composition. Around the unreacted glass a reactive layer has precipitated with a (Ca+Sr)/P ratio of 0.85 similar to the values reported in Table 4 and corresponding to the precipitation of dicalcium phosphate di-hydrate.