

1D-Zigzag $\text{Eu}^{3+}/\text{Tb}^{3+}$ Coordination Chains as Luminescent Ratiometric Thermometers Endowed with Multicolor Emission

Luca Bellucci ^{1,2,3}, Gregorio Bottaro ^{1,3,*}, Luca Labella ^{1,2,*}, Fabio Marchetti ², Simona Samaritani ², Daniela Belli Dell'Amico ² and Lidia Armelao ^{3,4}

¹ CNR ICMATE and INSTM, Dipartimento di Scienze Chimiche, Università di Padova, via Marzolo 1, I-35131 Padova, Italy; luca.bellucci@phd.unipd.it

² Dipartimento di Chimica e Chimica Industriale and CIRCC, Università di Pisa, via Giuseppe Moruzzi 13, I-56124 Pisa, Italy; fabio.marchetti@unipi.it (F.M.); simona.samaritani@unipi.it (S.S.); daniela.belli@unipi.it (D.B.D.)

³ Dipartimento di Scienze Chimiche, Università di Padova, via Marzolo 1, I-35131 Padova, Italy; lidia.armelao@unipd.it

⁴ Dipartimento di Scienze Chimiche e Tecnologie dei Materiali (DSCTM), Consiglio Nazionale delle Ricerche, Piazzale A. Moro 7, 00185 Roma, Italy

* Correspondence: gregorio.bottaro@cnr.it (G.B.); luca.labella@unipi.it (L.L.); Tel.: +39-049-8275275 (G.B.); +39-050-2219262 (L.L.)

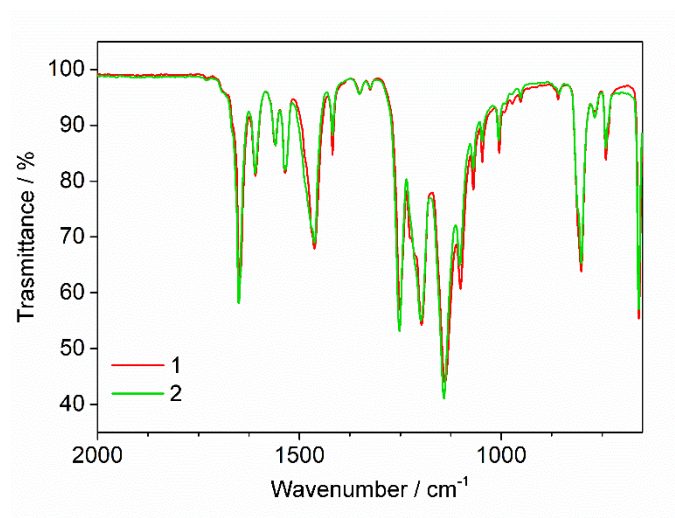


Figure S1. Superimposed infrared spectra of $[\text{Eu}(\text{hfac})_3(\text{bipy})]_n$ (1, red) and $[\text{Tb}(\text{hfac})_3(\text{bipy})]_n$ (2, green) CPs in the 2000–650 cm^{-1} wavenumber range.

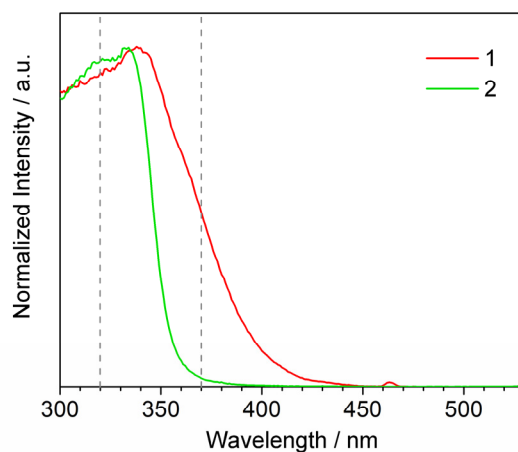


Figure S2. Excitation spectra of compound 1 (red) and 2 (green), $\lambda_{em} = 614$ and 543 nm, respectively. The vertical dashed lines highlight the two excitation wavelengths used in the work (320 and 370 nm).

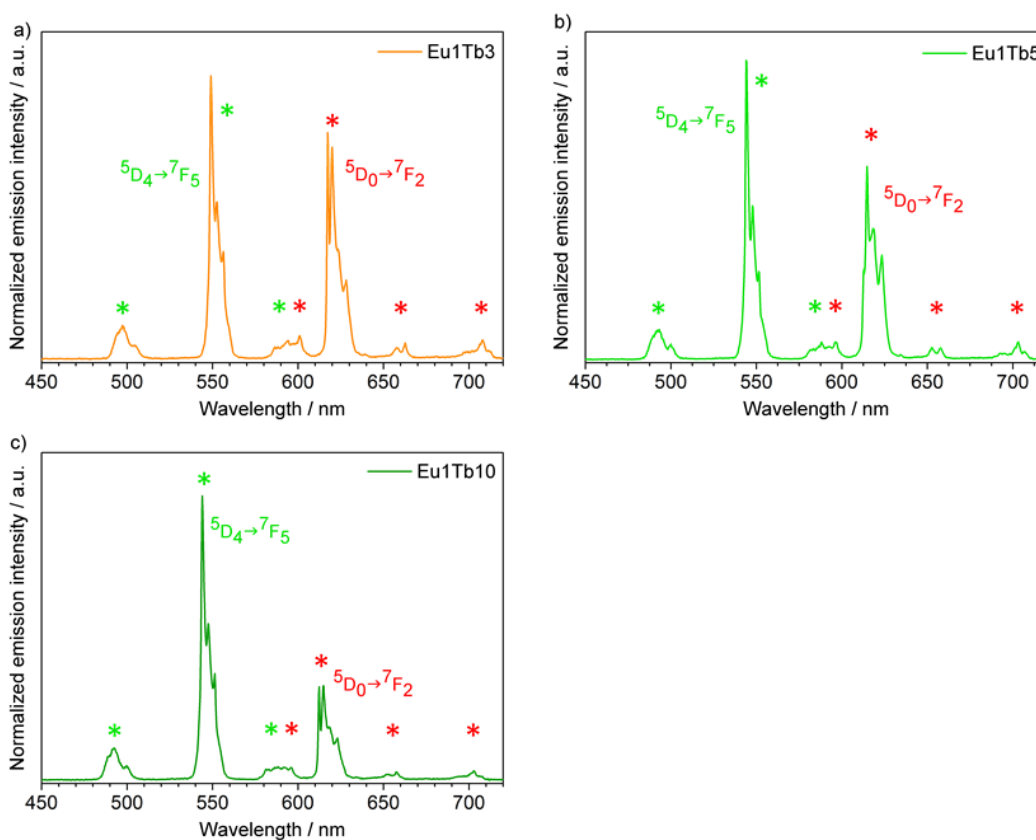


Figure S3. Room temperature emission spectra of samples (a) Eu1Tb3, (b) Eu1Tb5 and (c) Eu1Tb10. $\lambda_{exc} = 320$ nm.

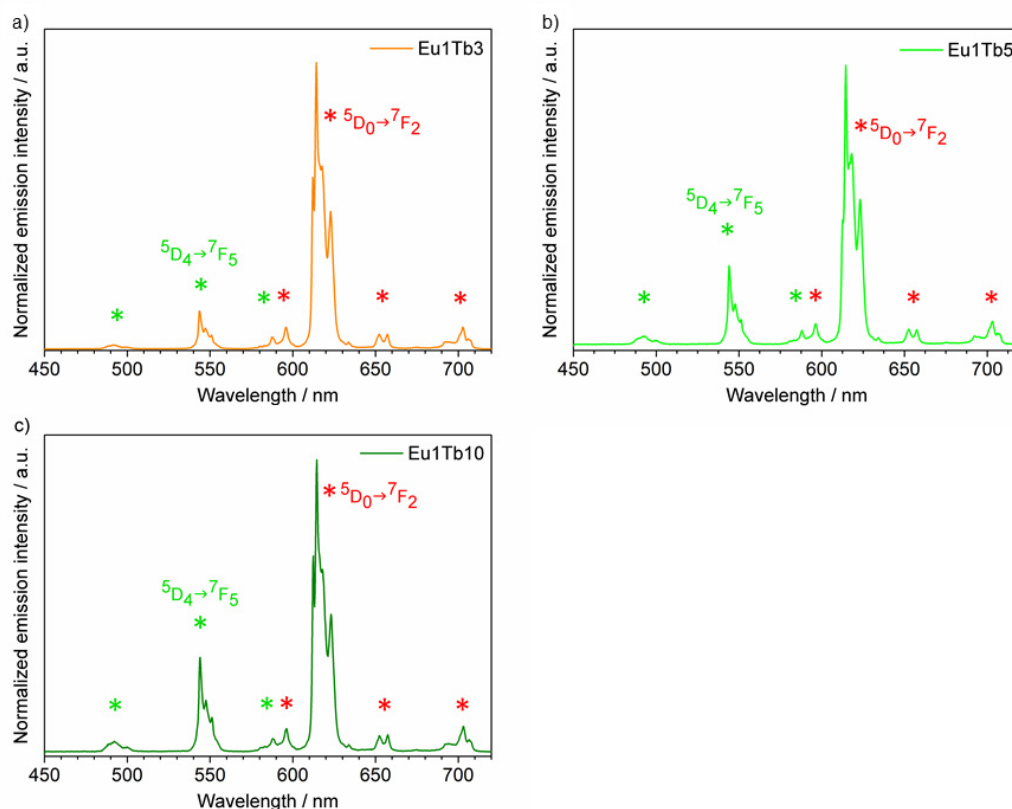


Figure S4. Room temperature emission spectra of samples (a) Eu1Tb3, (b) Eu1Tb5 and (c) Eu1Tb10. $\lambda_{exc} = 370$ nm.

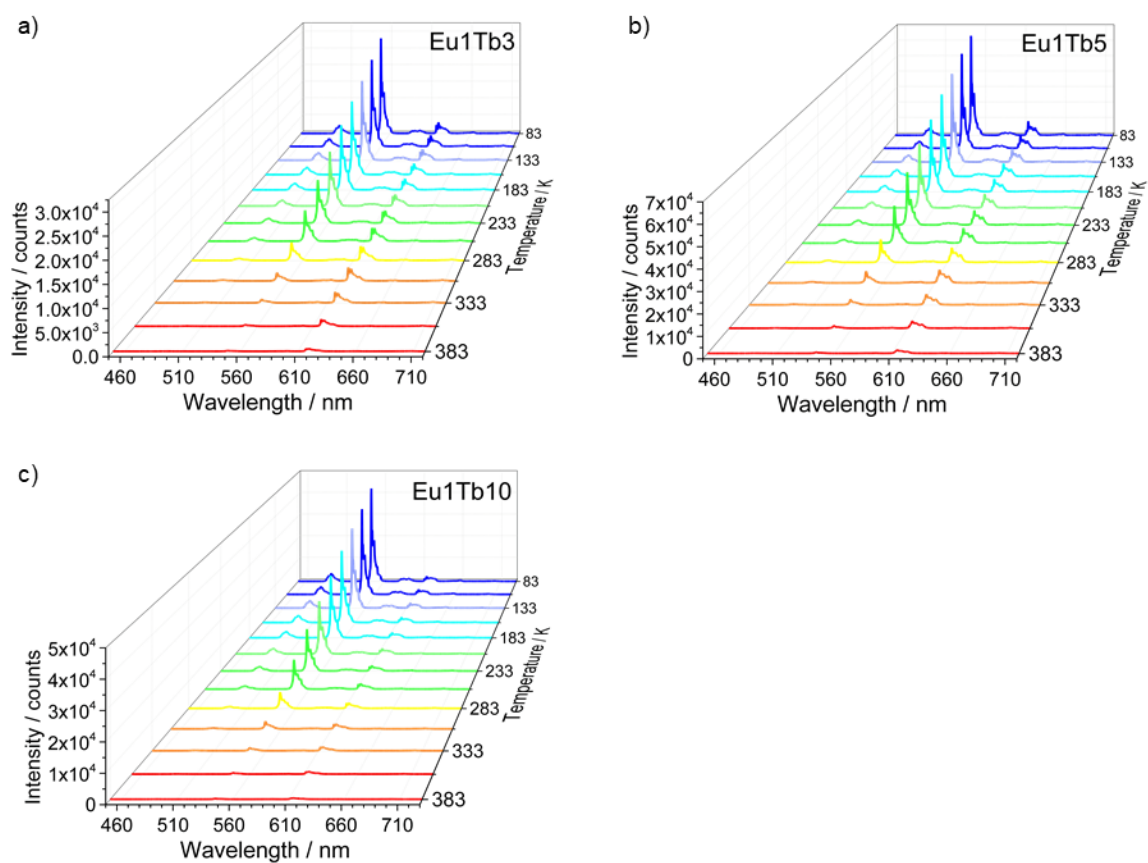


Figure S5. Temperature dependent emission spectra of sample (a) Eu1Tb3, (b) Eu1Tb5 and (c) Eu1Tb10. $\lambda_{exc} = 320$ nm.

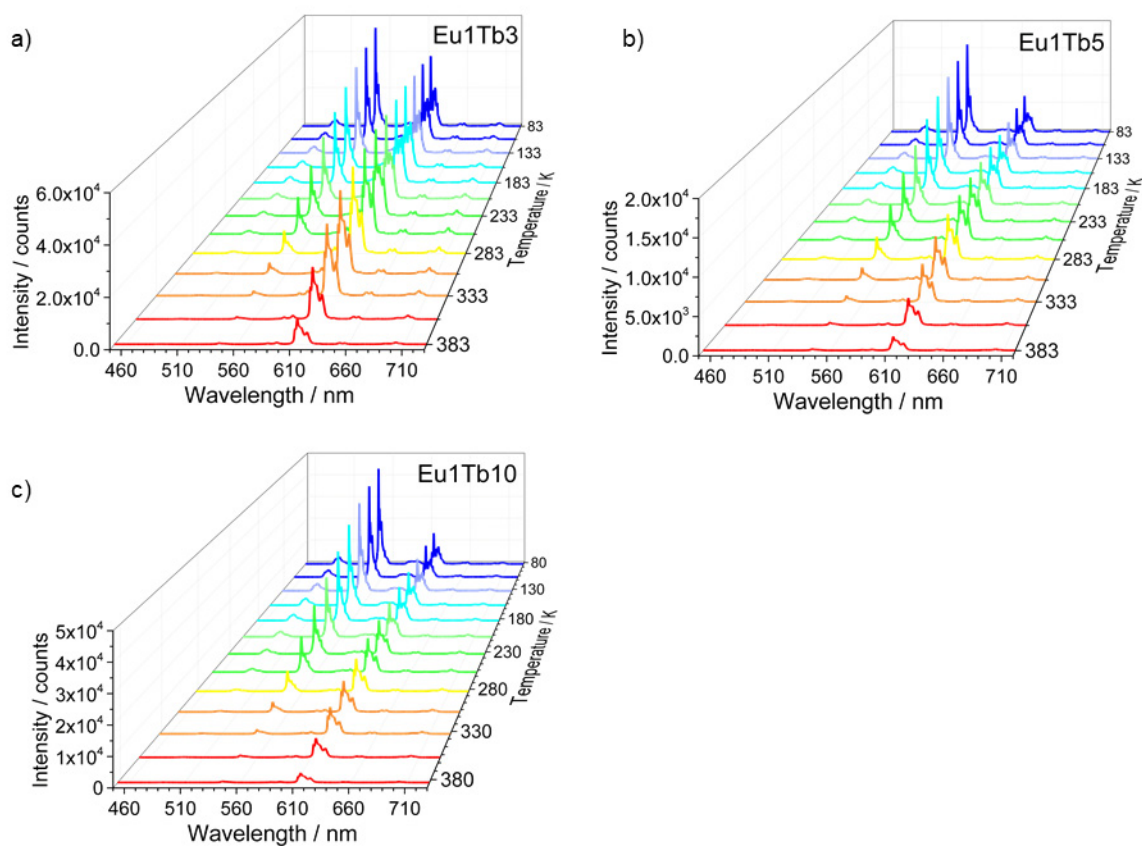


Figure S6. Temperature dependent emission spectra of sample (a) Eu1Tb3, (b) Eu1Tb5, (c) Eu1Tb10. $\lambda_{\text{exc}} = 370$ nm.

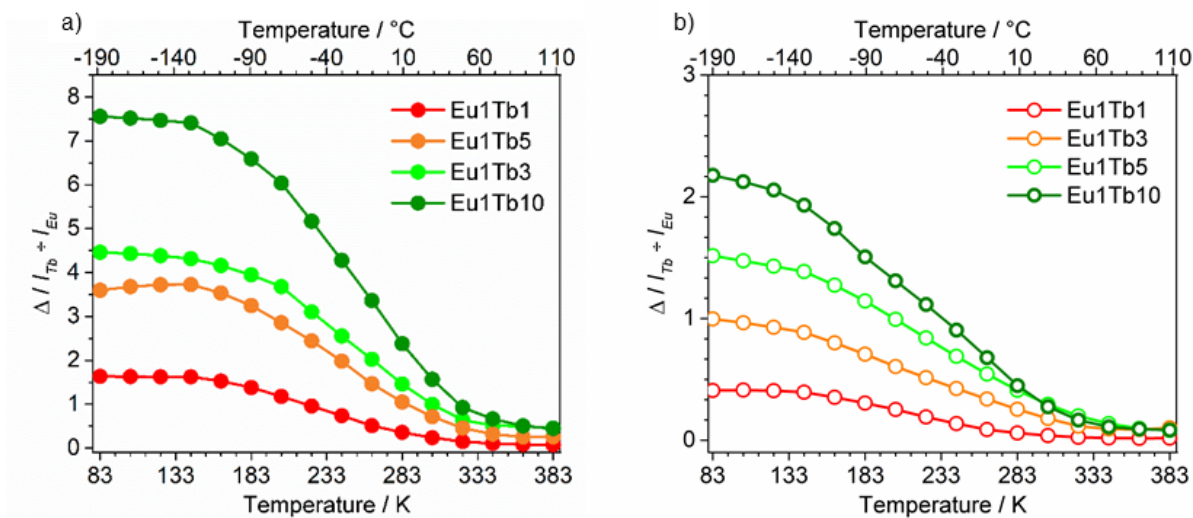


Figure S7. Δ vs T curves of Eu-Tb mixed samples. (a) $\lambda_{\text{exc}} = 320$ nm, (b) $\lambda_{\text{exc}} = 370$ nm.