

Supplementary

Adhesion and Growth of Neuralised Mouse Embryonic Stem Cells on Parylene-C/SiO₂ Substrates

Alan F. Murray ¹ and Evangelos Delivopoulos ^{2,*}

¹ School of Engineering, University of Edinburgh, Edinburgh EH9 3JL, UK; Alan.Murray@ed.ac.uk

² School of Biological Sciences, University of Reading, Berkshire RG6 6AH, UK

* Correspondence: e.delivopoulos@reading.ac.uk; Tel.: +44-11-8378-8615

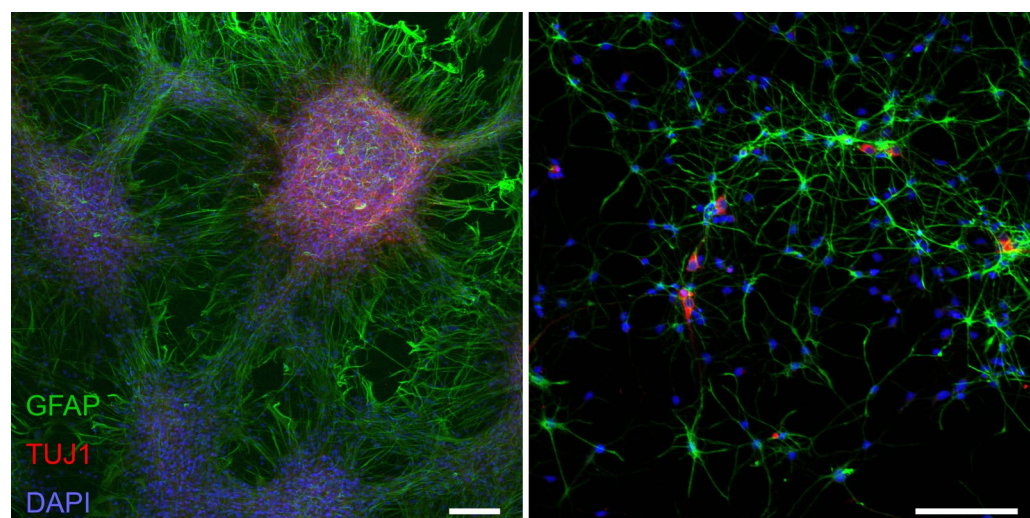


Figure S1. Assessment of the morphology and health of primary neuron and astrocyte populations. Primary cell culture examples on poly-D-lysine treated glass coverslips. Neuronal and astrocyte populations appear large and healthy. Neurons formed clusters and extended processes, whereas astrocytes expanded and covered the entire surface. Left image: 21 DIV. Right image: 7 DIV. For both images, the green channel shows GFAP (astrocytes), the red channel shows TUJ1 (neurons) and the blue channel shows DAPI (nuclei). Scale bar is 100 μ m.