

Enhanced Triboelectric Performance of Modified PDMS Nanocomposite Multilayered Nanogenerators

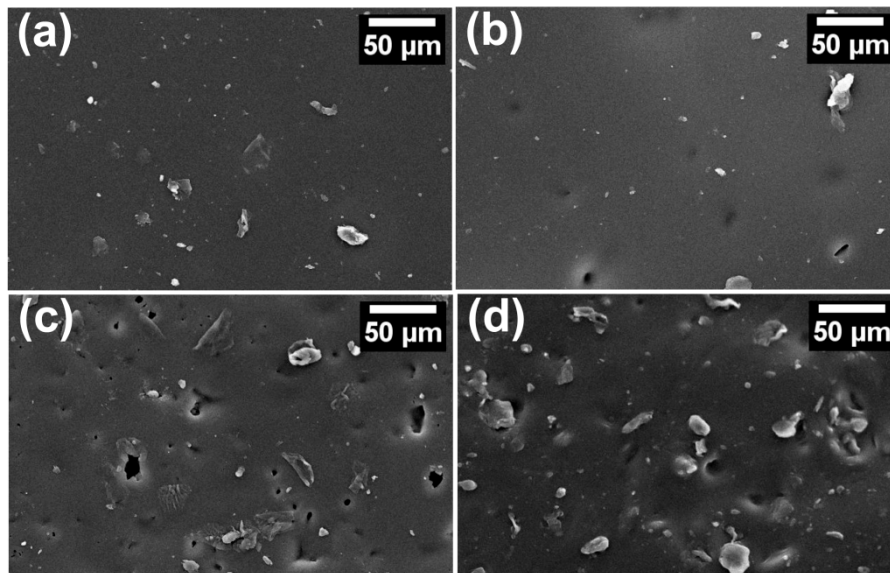


Figure S1. Top view SEM images of composite films. (a) PDMS; (b) S-PDMS; (c) SG-PDMS-I and (d) SG-PDMS-II.

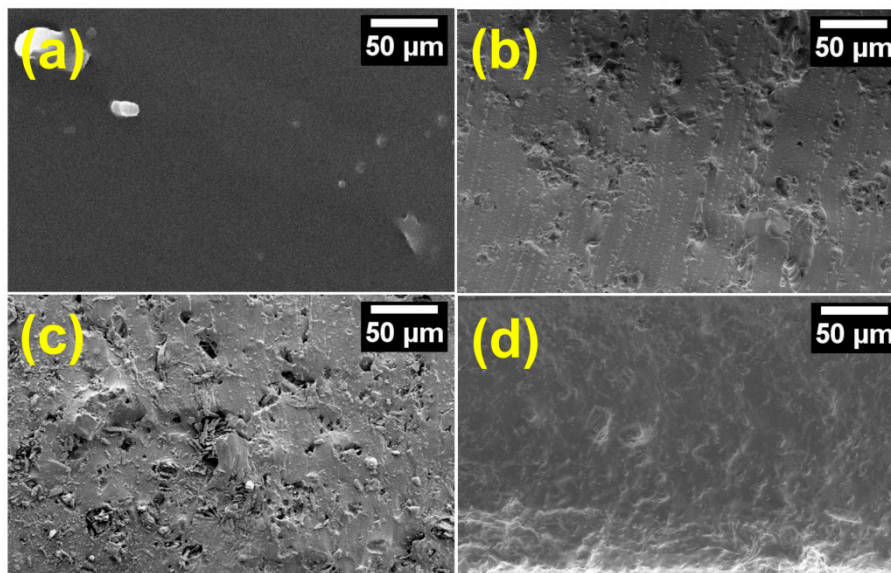


Figure S2. Cross-section view SEM images of composite films. (a) PDMS; (b) S-PDMS; (c) SG-PDMS-I and (d) SG-PDMS-II.

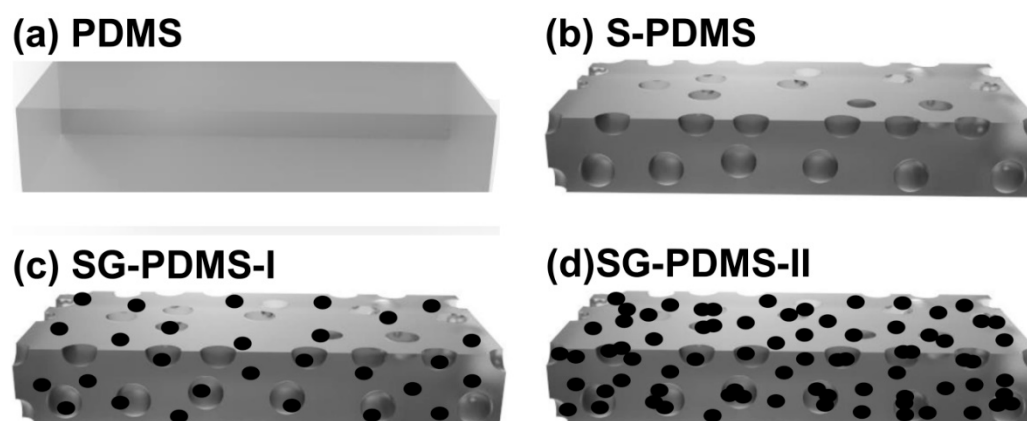


Figure S3. Schematic illustration of composite films. (a) PDMS; (b) S-PDMS; (c) SG-PDMS-I and (d) SG-PDMS-II.

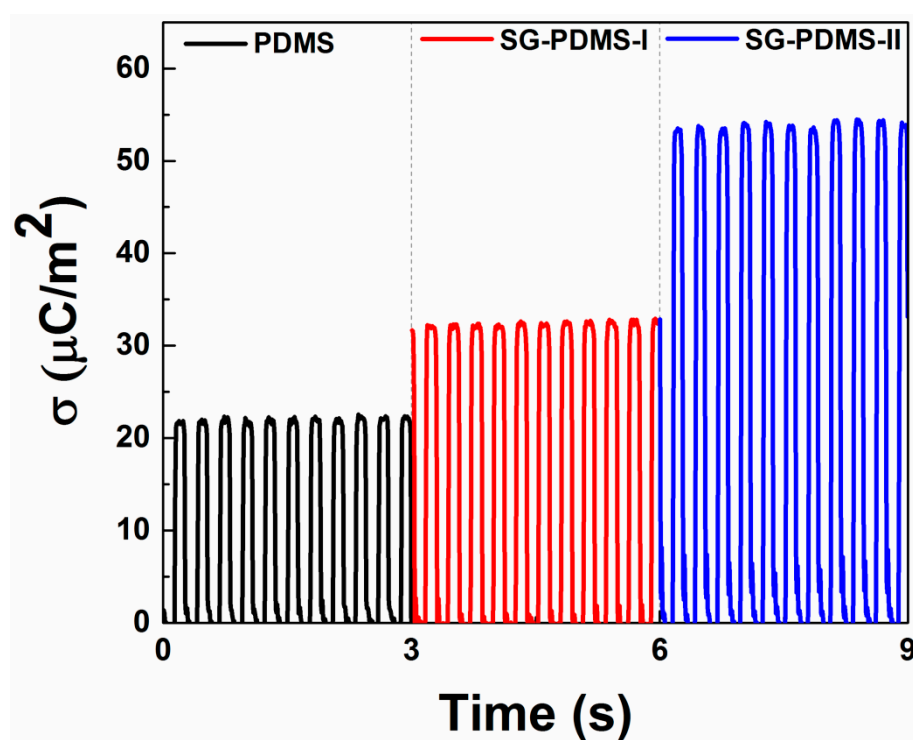


Figure S4. Charge density of PDMS/TENG, SG-PDMS-I/TENG and SG-PDMS-II/TENG.

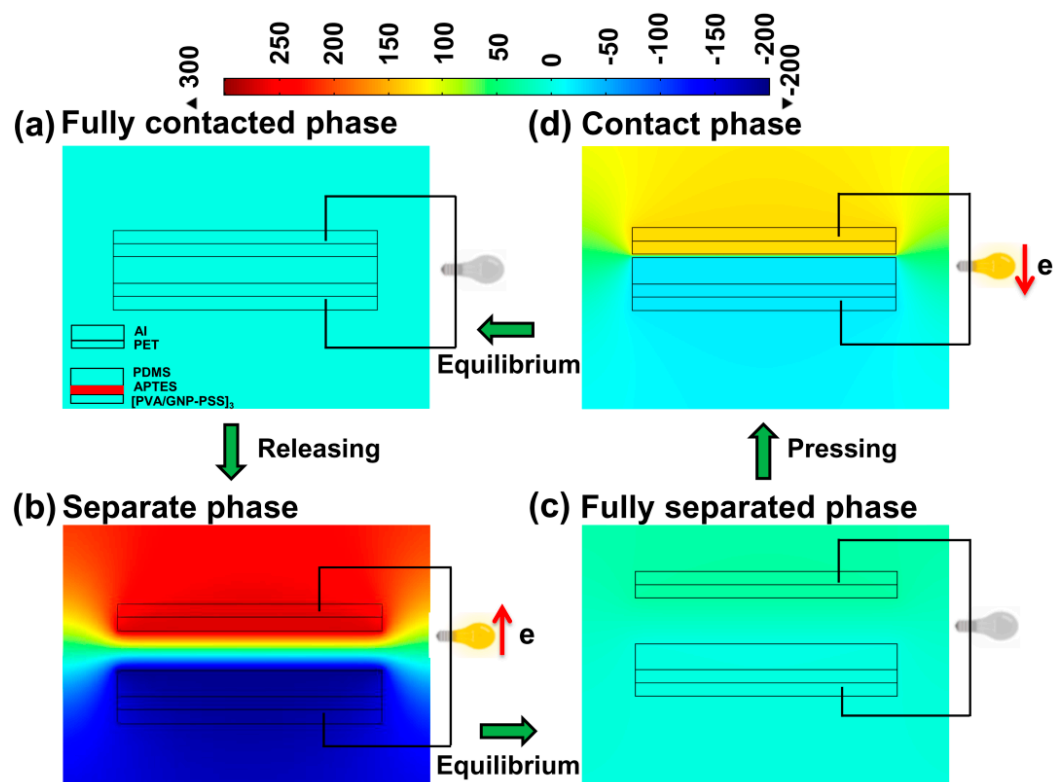


Figure S5. A finite-element simulation of the potential distribution in the SG-PDMS-II/TENG using COMSOL Multiphysics® software. (a) fully contact phase; (b) separate phase; (c) fully separated phase and (d) contact phase.



© 2020 by the authors. Submitted for possible open access publication under the terms and conditions of the Creative Commons Attribution (CC BY) license (<http://creativecommons.org/licenses/by/4.0/>).