

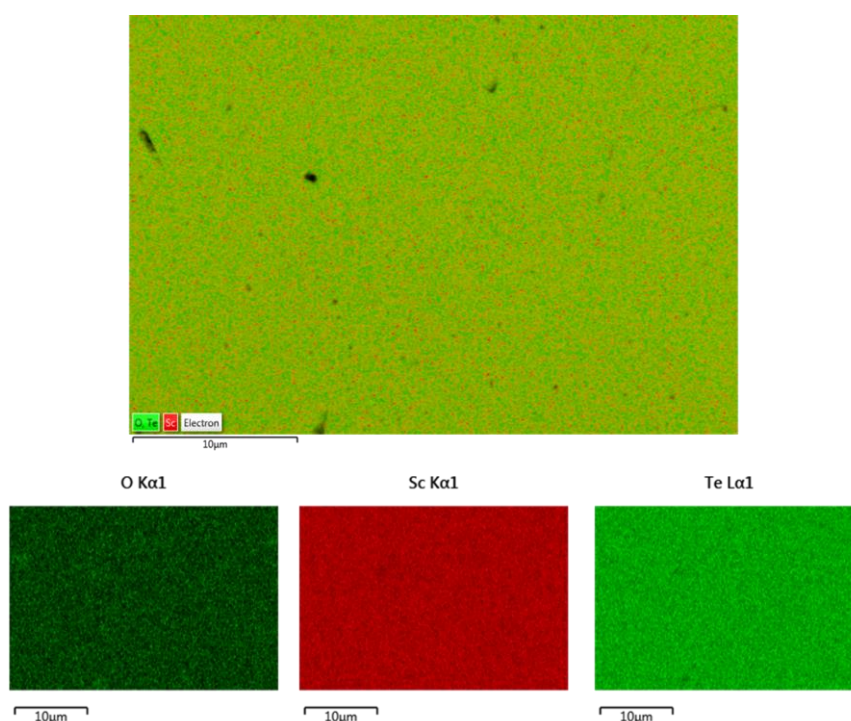
# Thermoelectric Properties of Scandium Sesquitelluride

Dean Cheikh <sup>1</sup>, Kathleen Lee <sup>1</sup>, Wanyue Peng <sup>2</sup>, Alexandra Zevalkink <sup>2</sup>, Jean-Pierre Fleurial <sup>1</sup> and Sabah K. Bux <sup>1,\*</sup>

<sup>1</sup> Thermal Energy Conversion Research and Advancement Group, Jet Propulsion Laboratory/California Institute of Technology, 4800 Oak Grove Drive, Pasadena, CA 91109, USA; dean.a.cheikh@jpl.nasa.gov (D.C.); Kathy.Lee@jpl.nasa.gov (K.L.); Jean-Pierre.Fleurial@jpl.nasa.gov (J.-P.F.)

<sup>2</sup> Chemical Engineering and Materials Science Department, Michigan State University, East Lansing, MI 48824, USA; pengwany@msu.edu (W.P.); alexzev@msu.edu (A.Z.)

\* Correspondence: Sabah.K.Bux@jpl.nasa.gov; Tel.: +1-818-393-7067



**Figure 1.** EDS map of compacted  $\text{Sc}_2\text{Te}_3$  sample. Sc and Te were found to be evenly distributed. The detected O resulted from surface oxidation.

**Table 1.** Measured and theoretical sample densities for  $\text{Sc}_2\text{Te}_3$ . Measurements were made using sample geometry. The sample was over 99% dense.

Sample Density	Theoretical Density
5.29 g/cm <sup>3</sup>	5.32 g/cm <sup>3</sup>