

Supplemental Information:

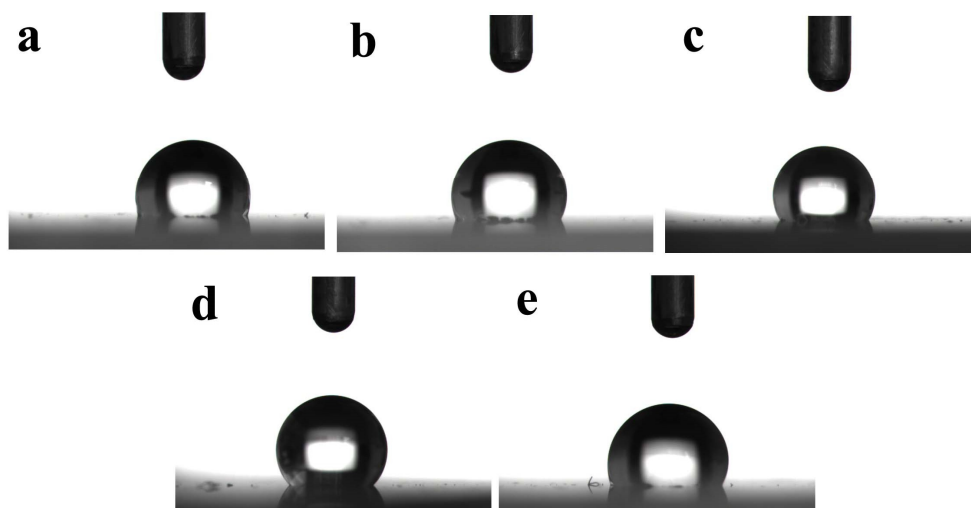


Figure S1. The CAs of CS films with different layers after placing in ambient environment for seven days: (a) the first-layer CS film; (b) the second-layer CS film; (c) the third-layer CS film; (d) the fourth-layer CS film; (e) the fifth-layer CS film.

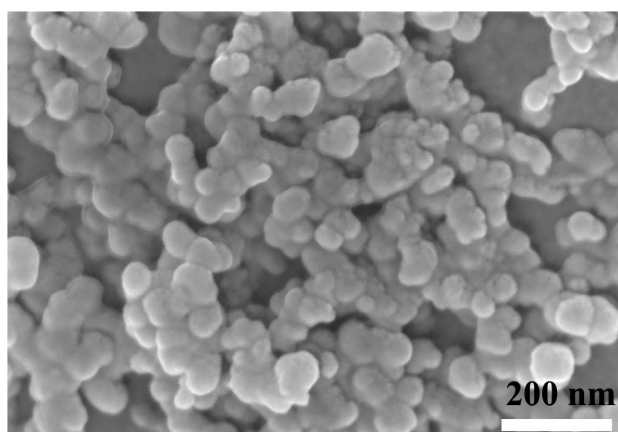


Figure S2. The high resolution picture of SEM of candle soot.