

Supplementary Material

Supplementary material to: Geothermal resources and ATEs potential of Mesozoic reservoirs in the North German Basin

Maximilian Frick^{1*}, Stefan Kranz¹, Ben Norden¹, David Bruhn^{1,2}, Sven Fuchs¹

¹ Helmholtz Centre Potsdam – GFZ German Research Centre for Geosciences. Section Geoenergy, Potsdam, Germany

² Delft University of Technology

* Correspondence: maximilian.frick@gfz-potsdam.de

Heat in place (HIP) and heat storage potential (HSP) maps

The following maps show the HIP and HSP distribution of the different stratigraphic units under study (Figure 1 and Figure 2) and the different formations/facies under study (Figure 3 and Figure 4). For information about how these values were calculated please refer to the main article.

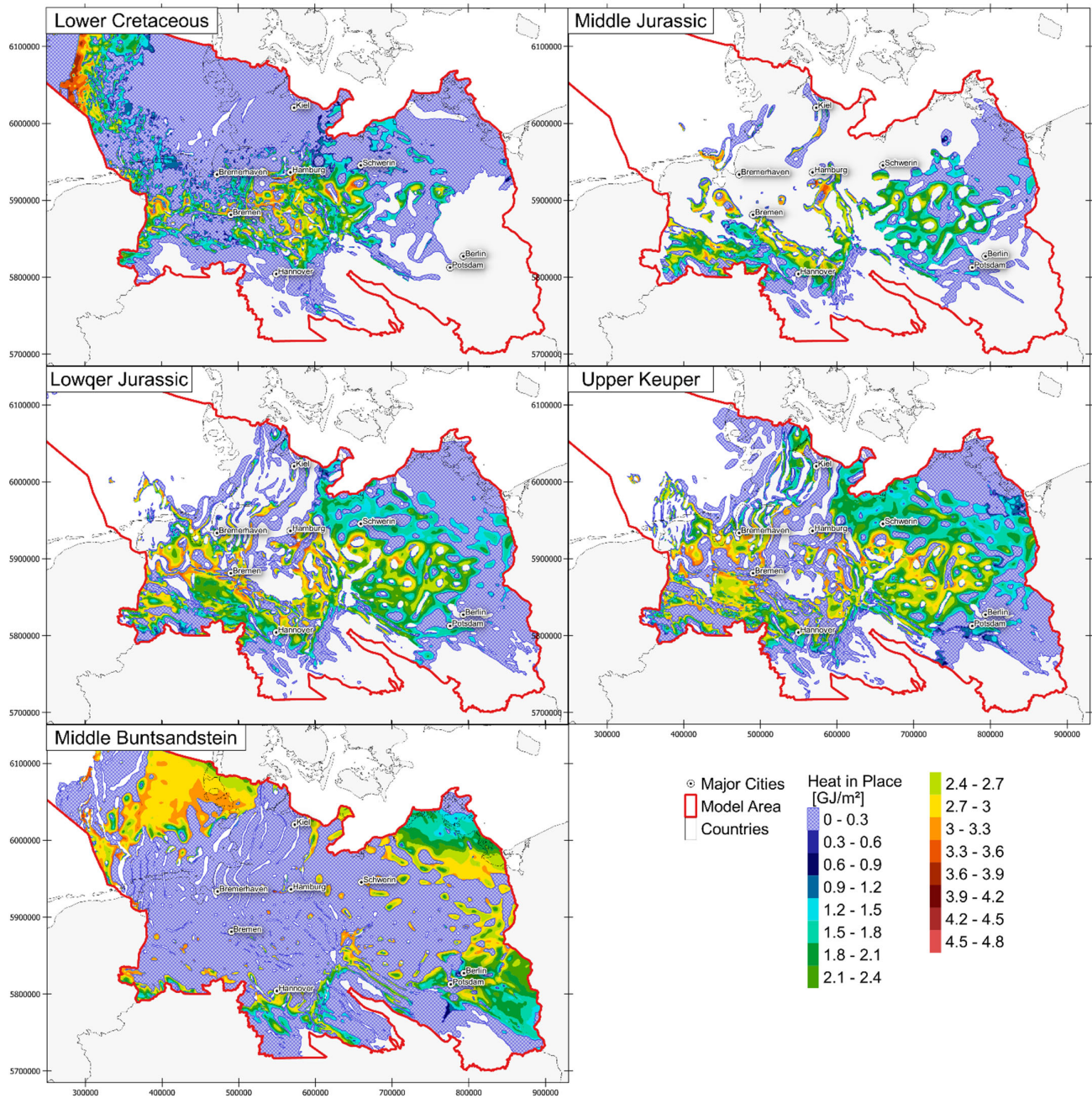


Figure S1: Calculated heat in place (HIP) for all stratigraphic units. Units' names indicated in upper left corner of each panel. Temperature model used = CEBS temperature model [1], Blank areas = stratigraphic not present. Color-coding and symbology indicated in the lower right corner. Coordinates are in UTM Zone 32N.

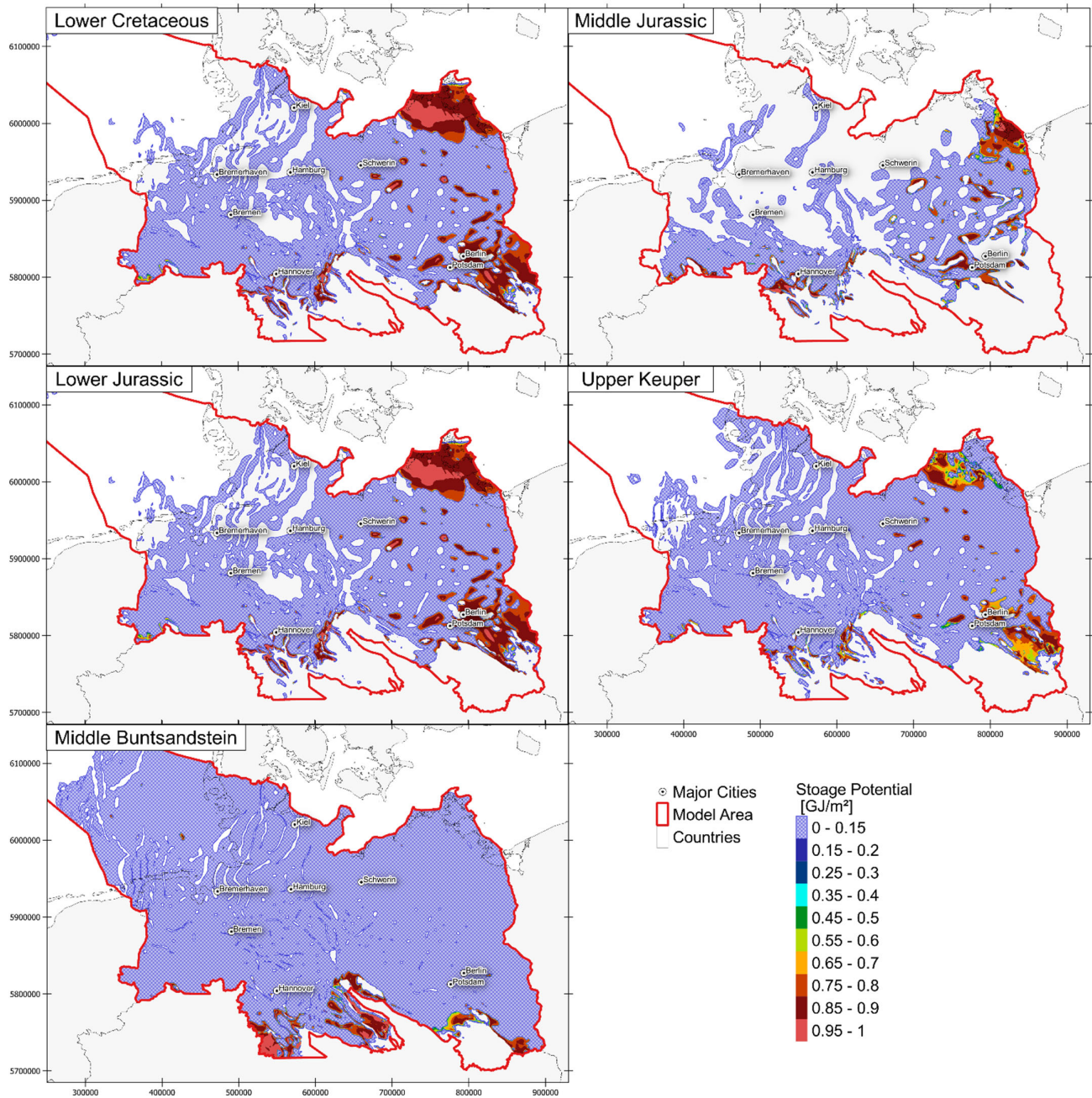


Figure S1: Calculated heat storage potential (HSP) for all stratigraphic units. Units' names indicated in upper left corner of each panel. Temperature model used = CEBS temperature model [2], Blank areas = stratigraphic not present. Color-coding and symbology indicated in the lower right corner. Coordinates are in UTM Zone 32N.

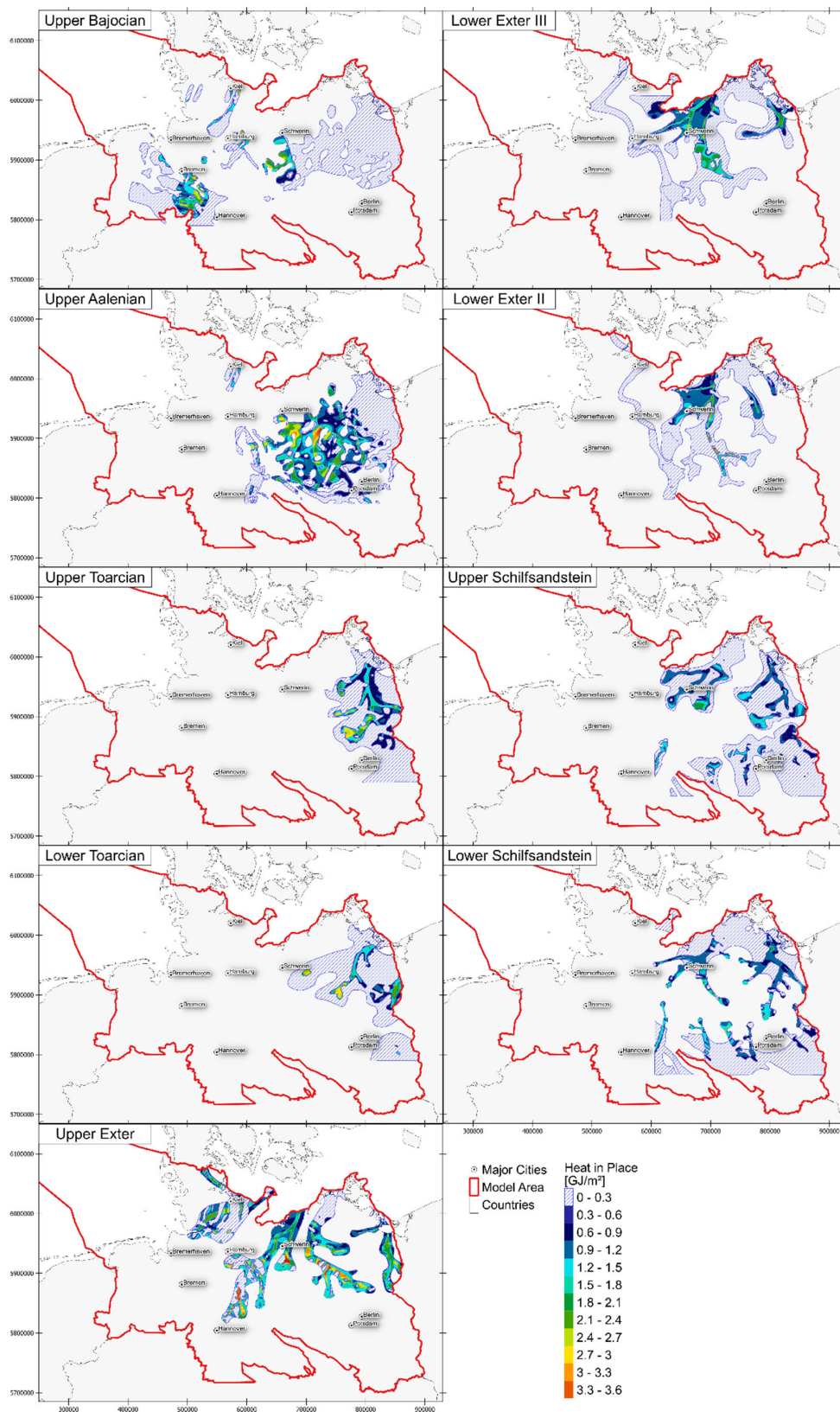


Figure S3: Calculated heat in place (HIP) for all formations/facies. Facies' names indicated in upper left corner of each panel. Temperature model used = CEBS temperature model [1], Blank areas = formation/facies not present. Color-coding and symbology indicated in the lower right corner. Coordinates are in UTM Zone 32N.

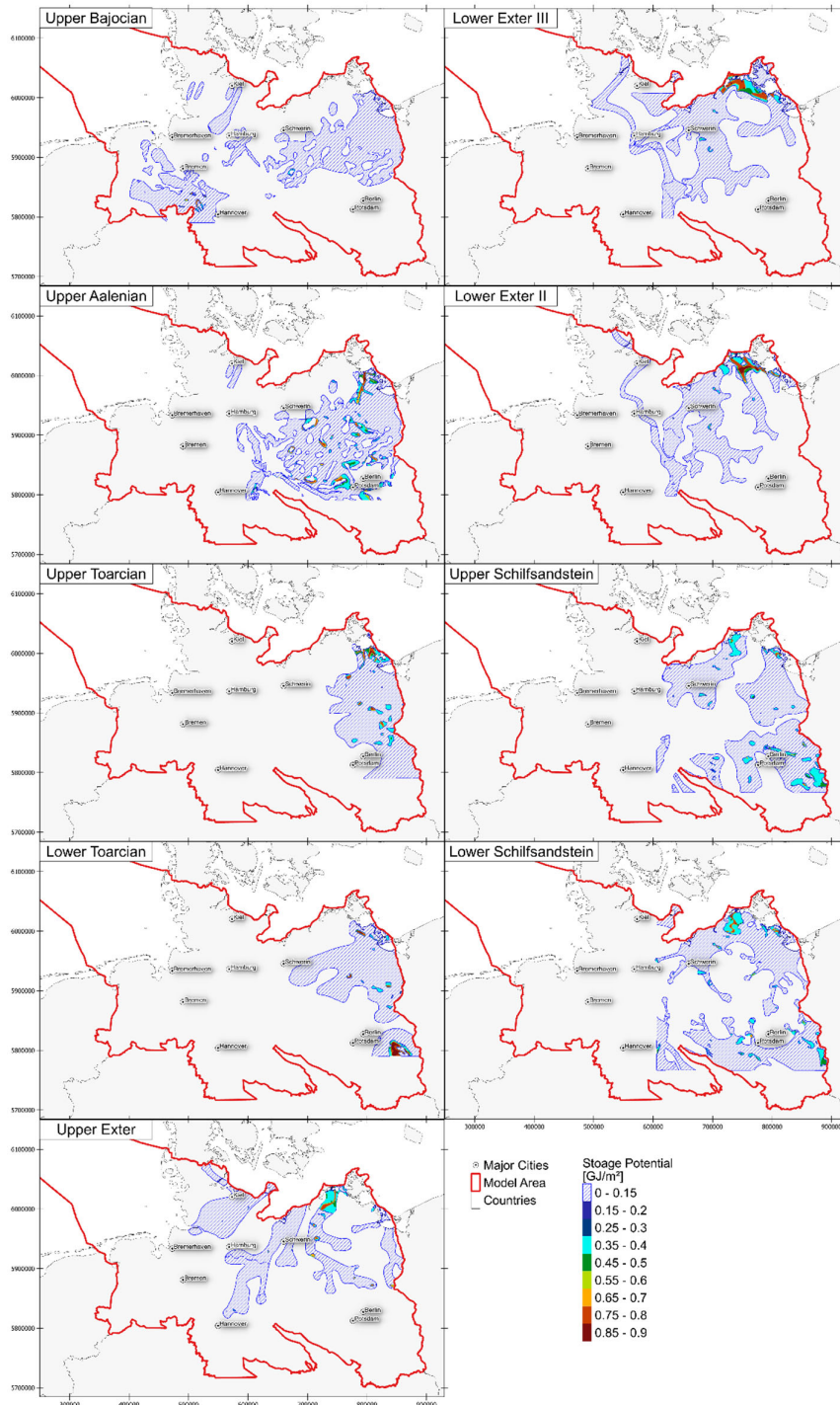


Figure S4: Calculated heat storage potential (HSP) for all formations/facies. Facies' names indicated in upper left corner of each panel. Temperature model used = CEBS temperature model [1], Blank areas = formation/facies not present. Color-coding and symbology indicated in the lower right corner. Coordinates are in UTM Zone 32N.

1. Frick, M.; Cacace, M.; Klemann, V.; Tarasov, L.; Scheck-Wenderoth, M. The Effects of Glacial-Interglacial Loading on the 3D Pore Pressure Evolution in Sedimentary Basins: Case Study from the Central European Basin System. **2020**, *22*, 9595.