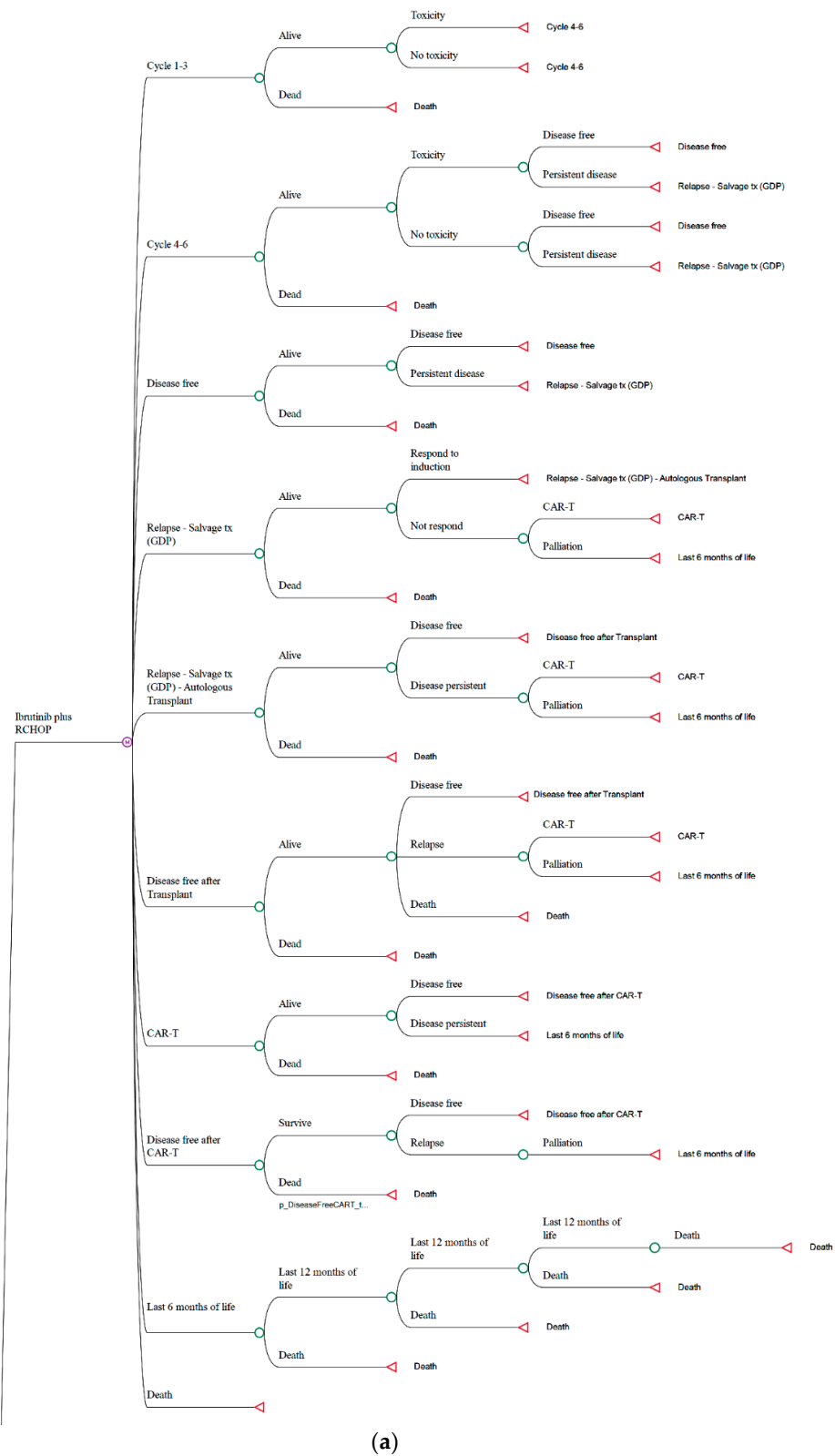
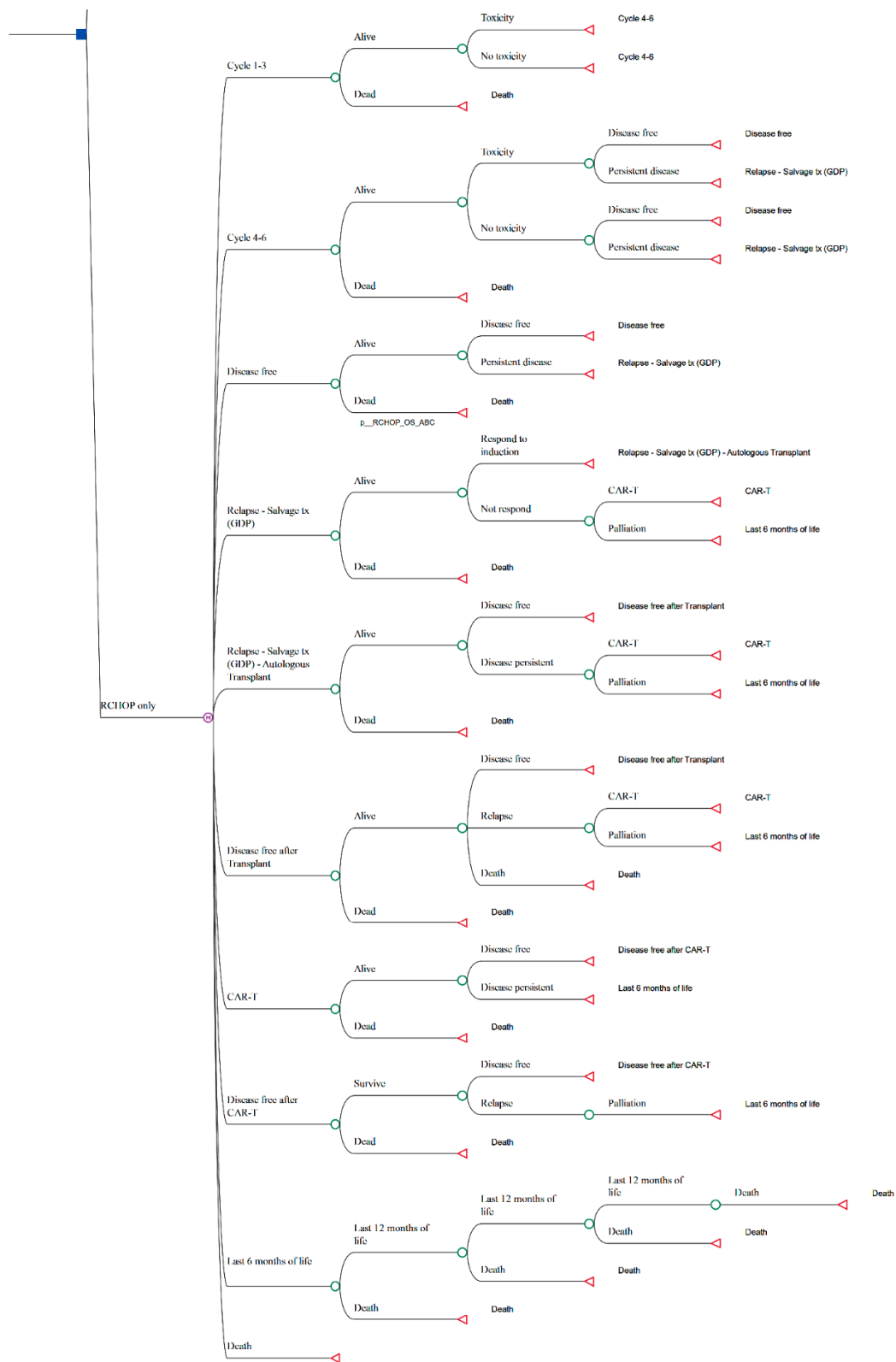


Supplementary Materials





(b)

Figure S1. (a) Simplified Markov Model (I-RCHOP Arm). (b) Simplified Markov Model (RCHOP Arm).

Table S1. Cost estimates used in analysis

Variable	Estimate	Low	High	References
Inclusive of initial treatment, costs of physician visits, nursing costs, supportive medications (G-CSF, anti-emetics), overhead, cancer centre visits, laboratory investigations, PET-CT scans				
RCHOP (total cost for 6 cycles)	42,184	37,275	47,094	[37,63–66]
I-RCHOP (total cost)	109,020	104,114	113,925	[37,63–66]
Disease free period				
Cost per 3 month cycle	361	278	443	[66], Expert Opinion 2021
Salvage Treatment				
GDP (total cost)	1,687	1,324	2,094	[66,67]
Autologous stem cell transplant (total cost, inclusive of GDP)	73,553	49,350	97,756	[66–69]
CAR-T	660,924	654,110	667,738	[66,70]
Palliative Therapy				
Comfort and supportive care in last 12 months of life per 3 month cycle	10136	8926	11346	[69,71], Expert Opinion 2021
Toxicities				
Febrile Neutropenia	9,268	2,915	15,620	[63,66,72]
Nausea	472	64	881	[64,66]
Gamma distributions were assumed for all cost modelling.				

Table S2. Health Utility Data

Utility Description	Utility	Low	High	References
Diagnosis and peri-treatment of DLBCL with RCHOP	0.79	0.693	0.891	[73–76]
Complete Response RCHOP	0.82	0.729	0.913	[73–76]
No Response RCHOP	0.435	0.342	0.539	[73–76]
Diagnosis and peri-treatment of DLBCL with I-RCHOP	0.7505	0.65835	0.84645	[73–76], Expert Opinion 2021
Complete Response I-RCHOP	0.779	0.69255	0.86735	[73–76], Expert Opinion 2021
No Response I-RCHOP	0.41325	0.3249	0.51205	[73–76], Expert Opinion 2021
Hospitalization for febrile neutropenia	0.64	0.512	0.768	[63,77]
GDP Salvage Treatment	0.734	0.5872	0.8808	[78,79]
Receiving autologous stem cell transplant	0.43	0.344	0.516	[69,80]
Post-transplantation	0.7	0.56	0.84	[80]
Complete Response CAR-T	0.73	0.621	0.847	[79,81]
Incurable DLBCL and Palliation	0.435	0.342	0.539	[69,82]
Beta distributions were assumed for all cost modelling.				

References

37. Ministry of Health Ontario. Schedule of Benefits: Physician Services Under the Health Insurance Act. Available online https://www.health.gov.on.ca/en/pro/programs/ohip/sob/physserv/sob_master_20221201.pdf (assessed on 14 October 2022)
63. Lathia, N.; Mittmann, N.; DeAngelis, C.; Knowles, S.; Cheung, M.; Piliotis, E.; Shear, N.; Walker, S. Evaluation of Direct Medical Costs of Hospitalization for Febrile Neutropenia. *Cancer* 2010, 116, 742–748.
64. Lachaine, J.; Yelle, L.; Kaizer, L.; Dufour, A.; Hopkins, S.; Deuson, R. Chemotherapy-Induced Emesis: Quality of Life and Economic Impact in the Context of Current Practice in Canada. *Support. Cancer Ther.* 2005, 2, 181–187. <https://doi.org/10.3816/SCT.2005.n.011>.
65. Best, J.H.; Hornberger, J.; Proctor, S.J.; Omnes, L.F.; Jost, F. Cost-Effectiveness Analysis of Rituximab Combined with Chop for Treatment of Diffuse Large B-Cell Lymphoma. *Value Health J.* 2005, 8, 462–470. <https://doi.org/10.1111/j.1524-4733.2005.00037.x>.
66. Ng, P.; Leung, F. Personal Communication. Inpatient Pharmacy, Princess Margaret Cancer Centre: Toronto, ON, Canada, 2021.
67. Moccia, A.A.; Hitz, F.; Hoskins, P.; Klasa, R.; Power, M.M.; Savage, K.J.; Shenkier, T.; Shepherd, J.D.; Slack, G.W.; Song, K.W.; et al. Gemcitabine, Dexamethasone, and Cisplatin (GDP) Is an Effective and Well-Tolerated Salvage Therapy for Re-lapsed/Refractory Diffuse Large B-Cell Lymphoma and Hodgkin Lymphoma. *Leuk Lymphoma* 2017, 58, 324–332. <https://doi.org/10.1080/10428194.2016.1193852>.
68. Vijenthira, A.; Kuruvilla, J.; Prica, A. Cost-Effectiveness Analysis of Allogeneic versus Autologous Stem Cell Trans-plant versus Chemo-Immunotherapy for Early Relapse of Follicular Lymphoma within 2 Years of Initial Therapy. *Bone Marrow Transplant* 2021, 56, 2400–2409. <https://doi.org/10.1038/s41409-021-01327-5>.
69. Vijenthira, A.; Chan, K.; Cheung, M.C.; Prica, A. Cost-Effectiveness of First-Line Treatment Options for Patients with Ad-vanced-Stage Hodgkin Lymphoma: A Modelling Study. *Lancet Haematol* 2020, 7, e146–e156. [https://doi.org/10.1016/S2352-3026\(19\)30218-2](https://doi.org/10.1016/S2352-3026(19)30218-2).
70. Axicabtagene Ciloleucel for Diffuse Large B-Cell Lymphoma: Economic Review Report, 2019. <https://www.cadth.ca/sites/default/files/pdf/car-t/ct0002-axicabtagene-ciloleucel-economic-report-redacted.pdf>. (accessed on 14 October 2022)
71. Yu, M.; Guerriere, D.N.; Coyte, P.C. Societal Costs of Home and Hospital End-of-Life Care for Palliative Care Pa-tients in Ontario, Canada. *Health Soc. Care* 2015, 23, 605–618. <https://doi.org/10.1111/hsc.12170>.
72. Canadian Agency for Drugs and Technologies in Health. Filgrastin (Grastofil - Apotex Inc.). CADTH Canadian Drug Expert Committee Final Recommendation. Available online https://www.cadth.ca/sites/default/files/cdr/complete/SE0446_cdr_complete_Grastofil_March-22-16_e.pdf (assessed on 14 October 2022)
73. Knight, C.; Hind, D.; Brewer, N.; Abbott, V. Rituximab (MabThera) for Aggressive Non-Hodgkin’s Lymphoma: A System-atic Review and Economic Evaluation. *Health Technol. Assess.* 2004, 8, 1–82. <https://doi.org/10.3310/hta8370>.
74. Oerlemans, S.; Issa, D.E.; van den Broek, E.C.; Nijziel, M.R.; Coebergh, J.W.W.; Huijgens, P.C.; Mols, F.; van de Poll-Franse, L.V. Health-Related Quality of Life and Persistent Symptoms in Relation to (R-)CHOP14, (R-)CHOP21, and Other Therapies among Patients with Diffuse Large B-Cell Lymphoma: Results of the Population-Based PHAROS-Registry. *Ann. Hematol.* 2014, 93, 1705–1715. <https://doi.org/10.1007/s00277-014-2099-8>.
75. Wang, H.; Manca, A.; Crouch, S.; Bagguley, T.; Yu, G.; Aas, E.; Howell, D.; Burton, C.; Patmore, R.; Roman, E.; et al. Health-State Utility Values in Diffuse Large B-Cell Lymphoma. *Value Health* 2018, 21, S74. <https://doi.org/10.1016/j.jval.2018.09.433>.
76. Golicki, D.; Jaśkowiak, K.; Wójcik, A.; Młyńczak, K.; Dobrowolska, I.; Gawrońska, A.; Basak, G.; Snarski, E.; Hołownia-Voloskova, M.; Jakubczyk, M.; et al. EQ-5D–Derived Health State Utility Values in Hematologic Malignancies: A Catalog of 796 Utilities Based on a Systematic Review. *Value Health* 2020, 23, 953–968. <https://doi.org/10.1016/j.jval.2020.04.1825>.
77. Lathia, N.; Isogai, P.K.; Angelis, C.D.; Smith, T.J.; Cheung, M.; Mittmann, N.; Hoch, J.S.; Walker, S. Cost-Effectiveness of Fil-grastim and Pegfilgrastim as Primary Prophylaxis Against Febrile Neutropenia in Lym-phoma Patients. *JNCI J. Natl. Cancer Inst.* 2013, 105, 1078–1085. <https://doi.org/10.1093/jnci/djt182>.
78. Cheung, M.C.; Hay, A.E.; Crump, M.; Imrie, K.R.; Song, Y.; Hassan, S.; Risebrough, N.; Sussman, J.; Couban, S.; MacDonald, D.; et al. Gemcitabine/Dexamethasone/Cisplatin vs Cytarabine/Dexamethasone/Cisplatin for Relapsed or Refractory Ag-gressive-Histology Lymphoma: Cost-Utility Analysis of NCIC CTG LY.12. *JNCI J. Natl. Cancer Inst.* 2015, 107, djv106. <https://doi.org/10.1093/jnci/djv106>.

79. Ellis, K. Cost-Effectiveness of Chimeric Antigen Receptor T-Cell Therapy for Treating Large B- Cell Lymphoma Patients in Canada. Master's Thesis, The University of Waterloo, Waterloo, ON, Canada, 2019.
80. Frödin, U.; Börjeson, S.; Lyth, J.; Lotfi, K. A Prospective Evaluation of Patients' Health-Related Quality of Life during Au-to-SCT: A 3-Year Follow-Up. *Bone Marrow Transplant* 2011, 46, 1345–1352. <https://doi.org/10.1038/bmt.2010.304>.
81. Howell, T.A.; Matza, L.S.; Jun, M.P.; Garcia, J.; Powers, A.; Maloney, D.G. Health State Utilities for Adverse Events Associated with Chimeric Antigen Receptor T-Cell Therapy in Large B-Cell Lymphoma. *Pharm. Open* 2022, 6, 367–376. <https://doi.org/10.1007/s41669-021-00316-0>.
82. Wu, H.; Lin, P.; Yang, S.; Zhang, W.; Tao, W. Cost-Utility Analysis of Palliative Care in Patients with Advanced Cancer: A Retrospective Study. *BMC Palliat. Care* 2021, 20, 126. <https://doi.org/10.1186/s12904-021-00816-0>.