

Article

Impact of Salvage Surgery Following Colonic Endoscopic Polypectomy for Patients with Invasive Neoplasia

Xiangzhou Tan, Markus Quante, Zihua Chen, Zhikang Chen, Alfred Königsrainer and Dörte Wichmann

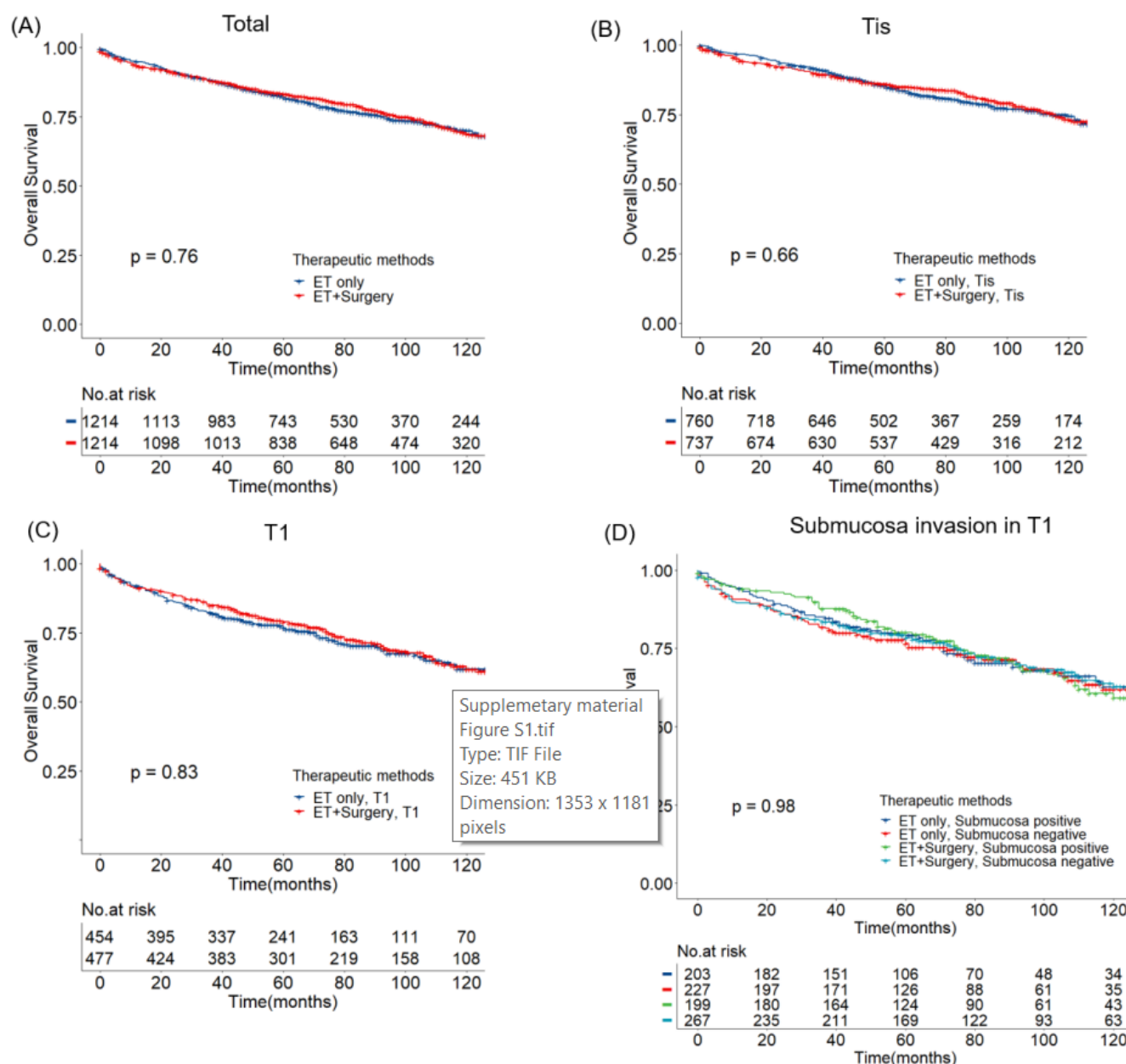


Figure S1. Kaplan-Meier overall survival plots in patients underwent endoscopic removal of invasive neoplasia. (A) All patients; (B) Patients with intramucosal carcinoma (Tis); (C) Patients with submucosal carcinoma (T1). (D) Patients with or without submucosa invasion.

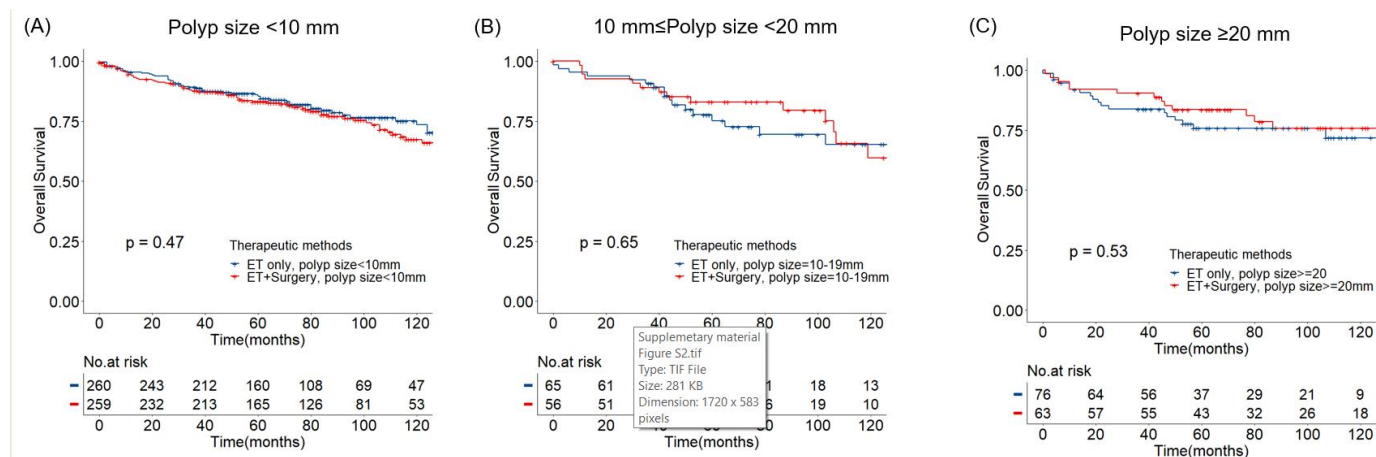


Figure S2. Kaplan-Meier overall survival plots in patients underwent endoscopic removal of invasive neo-plasia. (A) Invasive polyp size less than 10 mm; (B) Invasive polyp size between 10 mm and 20 mm; (C) Invasive polyp size larger than 20 mm.