

# The Role of Farnesoid X Receptor in Accelerated Liver Regeneration in Rats Subjected to ALPPS

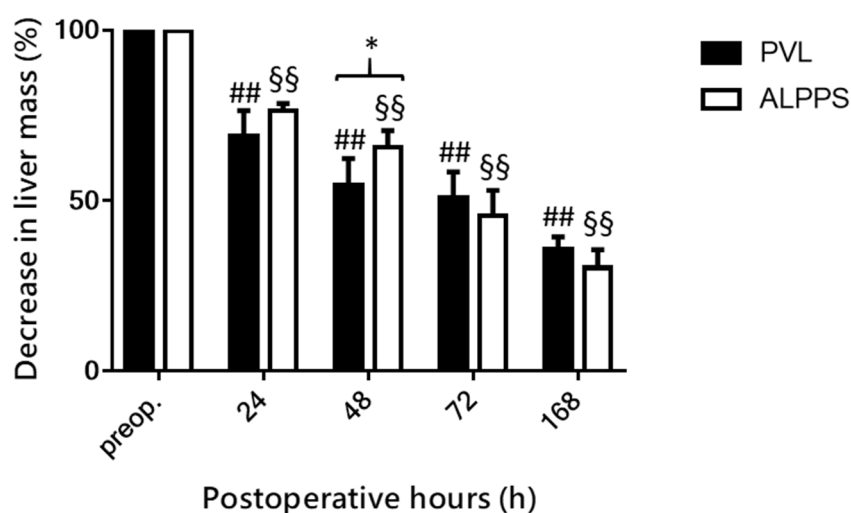
Noemi Daradics, Pim B. Olthof, Andras Budai, Michal Heger, Thomas M. van Gulik, Andras Fulop and Attila Szijarto

Table S1. qRT-PCR primers

Target	Forward (5' → 3')	Reverse (5' → 3')
<i>Cyp7a1</i> (RML)	GCAGCCTCTGAAGAAGTGAG-TGG	GATGCTGTCTAGTACCGGCAGG
<i>Ntcp</i> (RML)	TGAACCTCAG-CATCGTGATGACC	GGACGATCCCTATGGTGCAAGG
<i>Mrp3</i> (RML)	ATGCTGGCCAAAATGCGGTTGC	CCAGGAGCCCTTGCAGTATTCC
<i>Bsep</i> (RML)	CTCTGCTTTGCCTTTTCCAGG	AGAGACCACCCTGAAAACGTGG
<i>Mrp2</i> (RML)	GAGTCTGAG-GATGAATCTCGACC	TGCCCTATGCTCAGGTTGTCACC
<i>Fxr</i> (RML; I)	GTCATCCTCTCTCCAGACAG-ACA	GGTTGAATGTCCGGAGTTCTGTC
<i>Shp</i> (RML; I)	GCTAGAGGAACCCAACAGTGGT	CCTGGCACATCTGGGTTGAAGA
<i>B2m</i> (RML)	CCACCGGAGAAATGGGAAGCCC	TCTCGGTCCCAGGTGACGGT
<i>Foxm1</i> (RML)	AGGCGCCCTCAAGAGCATCA	TGGTGCCAACACTTCCAGCCT
<i>Fgfr4</i> (RML)	AGCTCCAGGCGGGTGAGTGT	CGCTGACCACCTTCCTGGCT
<i>Fgf15</i> (I)	AGGGCCAGAAACCTTCAAAC	GATCCATGCTGTGCTGCTCTC
<i>Oatp1a4</i> (RML)	CTCTTATGAAGGGGTTTCAG-CACC	CAAGGCAGGCTGACATGTATGC

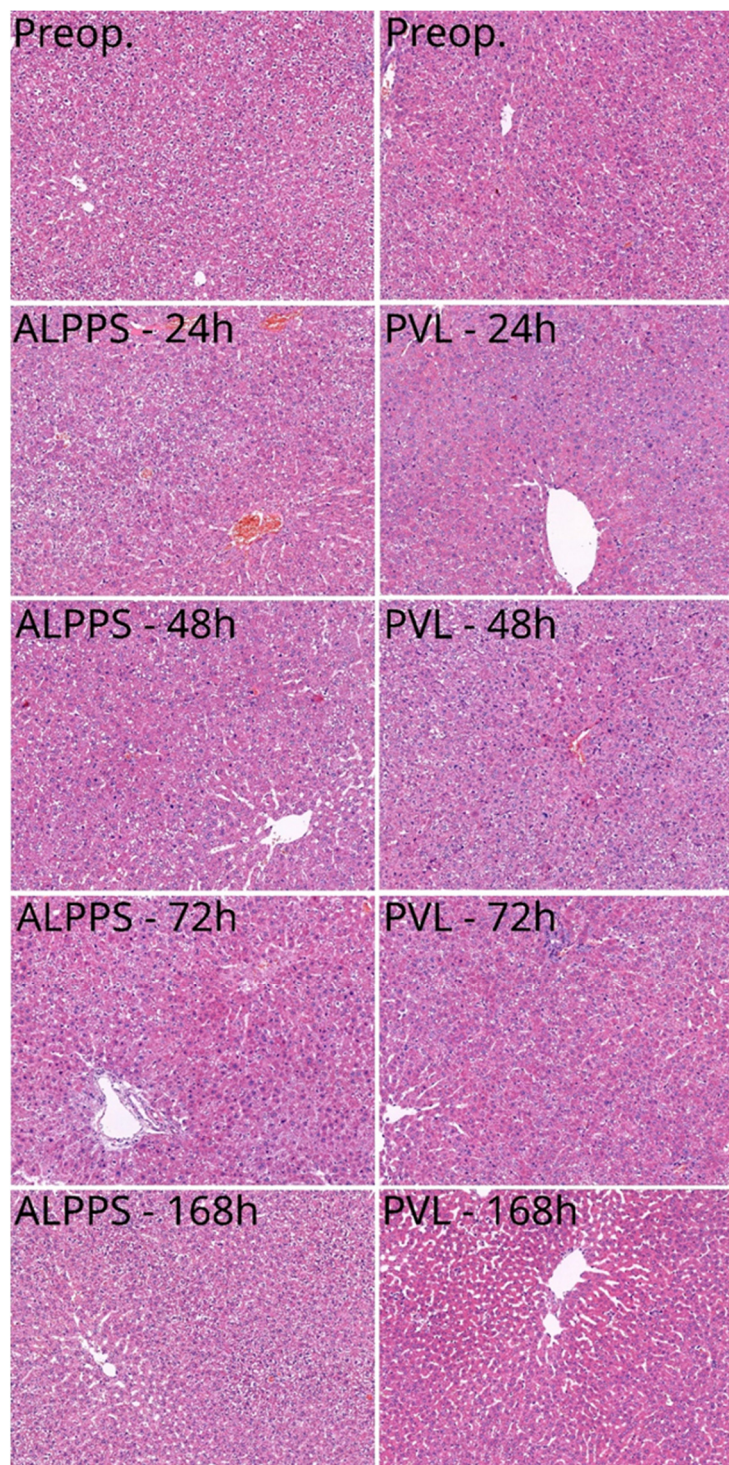
RML: right median lobe of the liver, I: identical part of the ileal tract.

## Liver mass of the ligated lobes



**Figure S1.** Rate of atrophy. Decrease in liver mass of the atrophying liver lobes preoperatively (preop.) and at 24 h, 48 h, 72 h, and 168 h after portal vein ligation (PVL) versus associating liver partition and portal vein ligation for staged hepatectomy (ALPPS) (N = 6 per time point per group).

\*  $P < 0.05$  versus PVL; ##  $P < 0.001$  PVL versus corresponding controls (preop.); §§  $P < 0.0010$  ALPPS versus corresponding controls (preop.). Statistical analysis was performed with a two-way ANOVA and Tukey's post hoc test.



**Figure S2.** Histological structure of liver preoperatively and after the operation. Histological structure (hematoxylin and eosin stain; original magnification:  $\times 150$ ) of the regenerating right median (RM) lobe preoperatively (preop.) and at 24 h, 48 h, 72 h, and 168 h after associating liver partition and portal vein ligation for staged hepatectomy (ALPPS) and portal vein ligation (PVL).