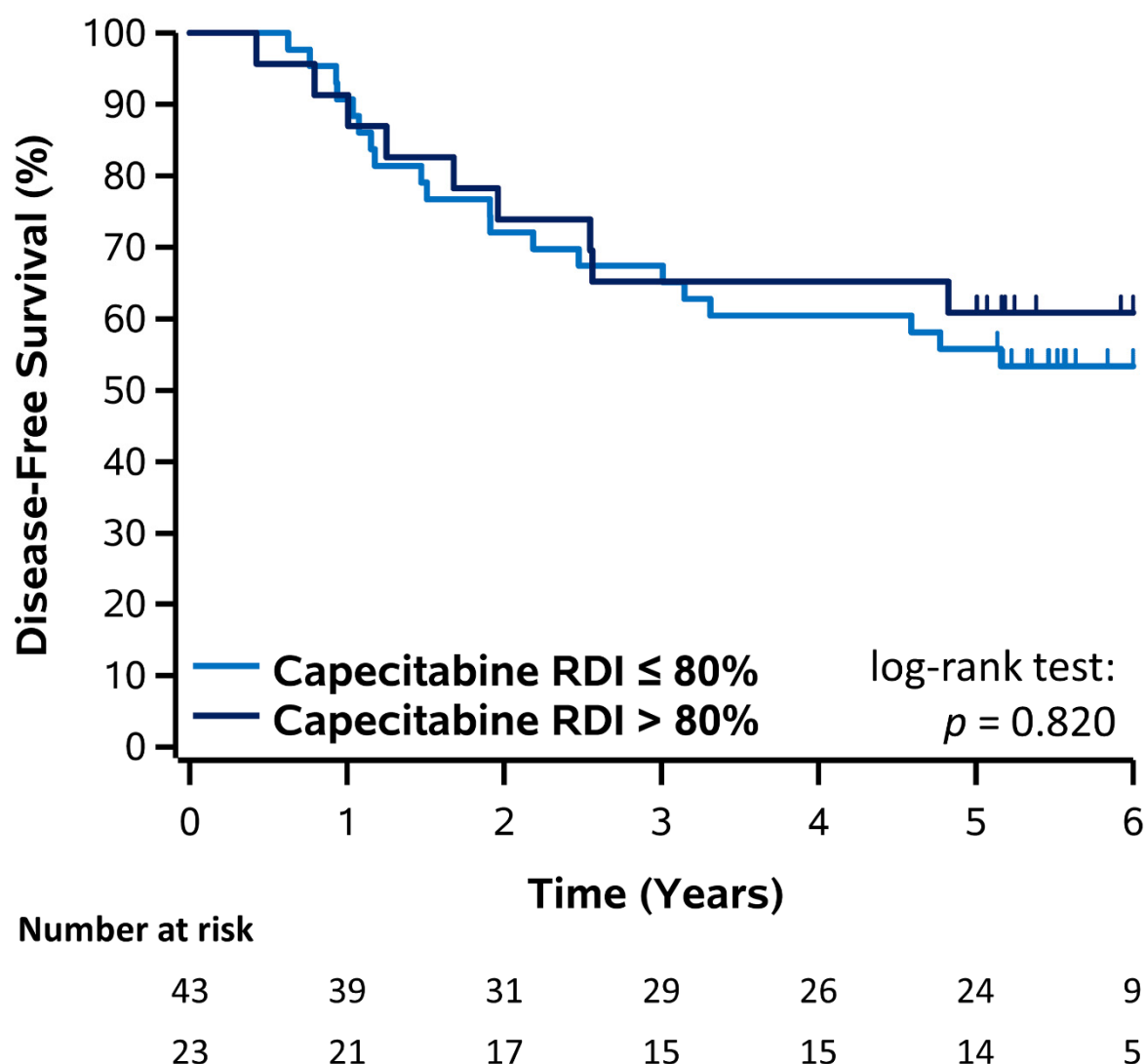
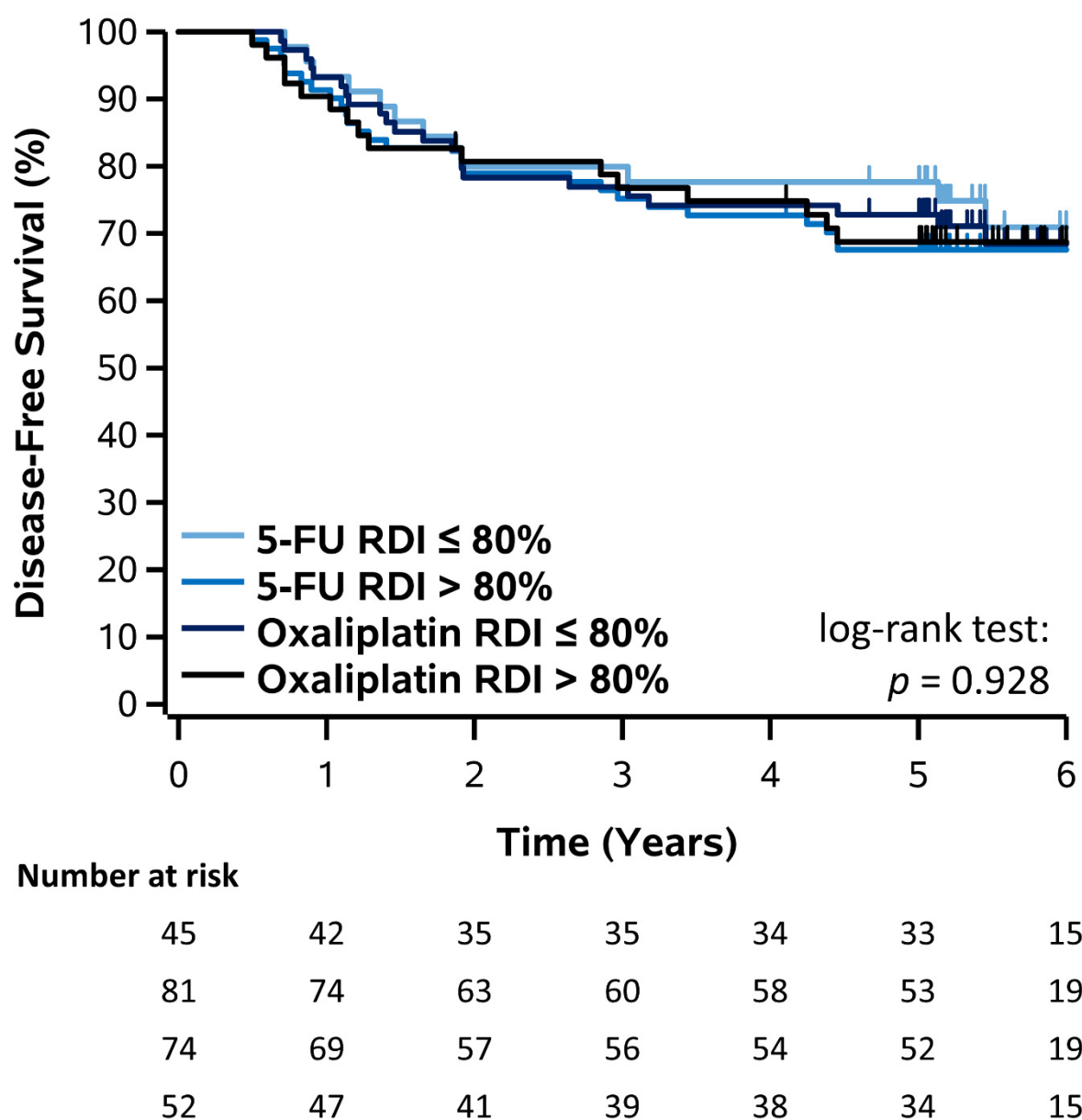


**Table S1.** The 3 and 5-year DFS and OS are reported for those who achieved greater than 80% RDI for the respective therapeutic versus those who did not exceed 80% RDI.

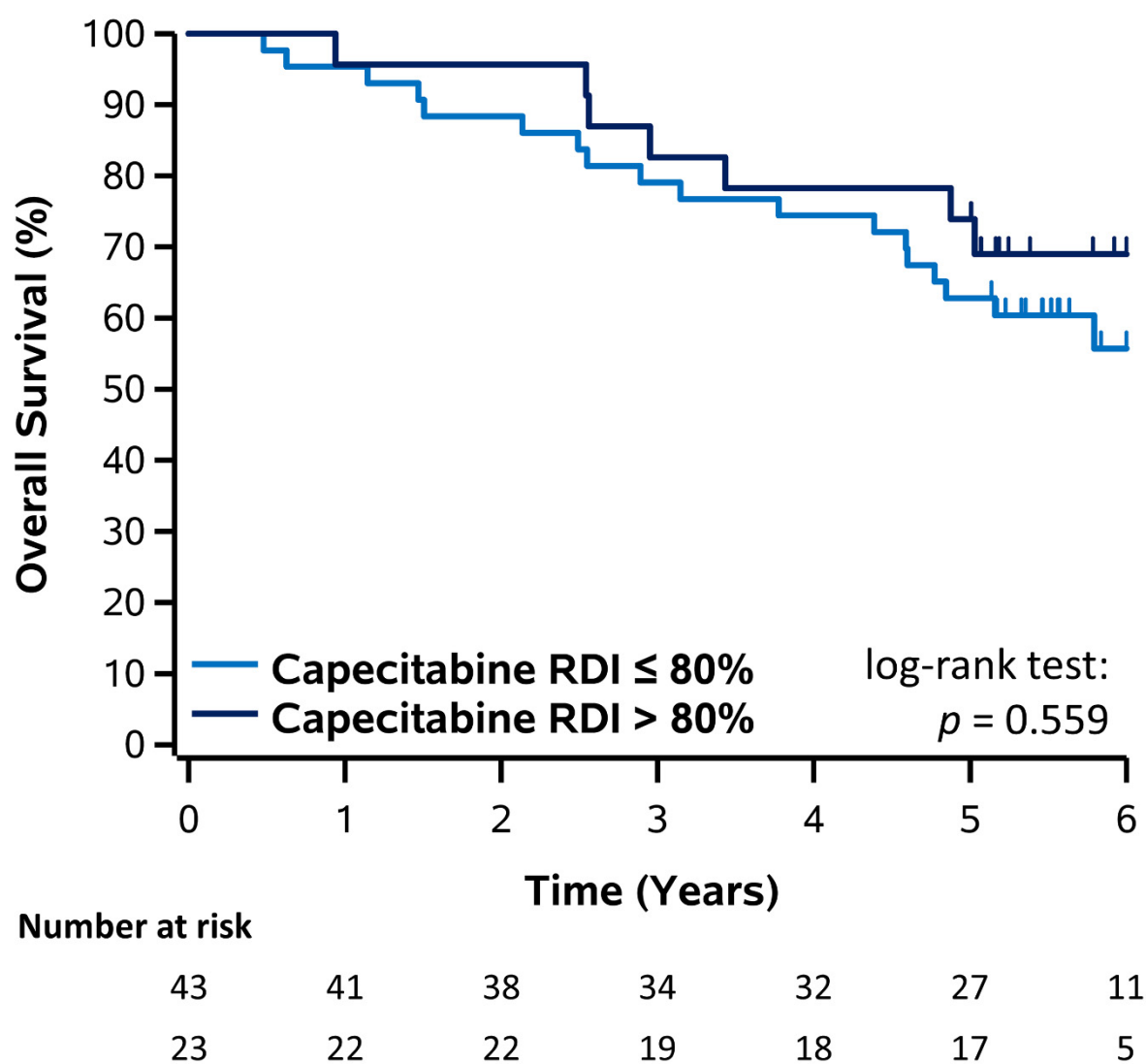
|              |     | 3-year DFS (%) |       | 5-year DFS (%) |       | P value |
|--------------|-----|----------------|-------|----------------|-------|---------|
|              |     | ≤80%           | > 80% | ≤80%           | >80%  |         |
| Capecitabine | RDI | 67.4%          | 65.2% | 55.8%          | 60.9% | 0.820   |
| Oxaliplatin  | RDI | 76.9%          | 76.8% | 72.8%          | 68.8% | 0.868   |
| 5-FU         | RDI | 79.9%          | 75.2% | 77.7%          | 67.6% | 0.512   |
|              |     | 3-year OS (%)  |       | 5-year OS (%)  |       | P value |
|              |     | ≤80%           | > 80% | ≤80%           | > 80% |         |
| Capecitabine | RDI | 79.1%          | 82.6% | 62.8%          | 73.9% | 0.560   |
| Oxaliplatin  | RDI | 87.7%          | 84.6% | 75.4%          | 78.6% | 0.523   |
| 5-FU         | RDI | 91.1%          | 83.9% | 79.7%          | 75.0% | 0.691   |



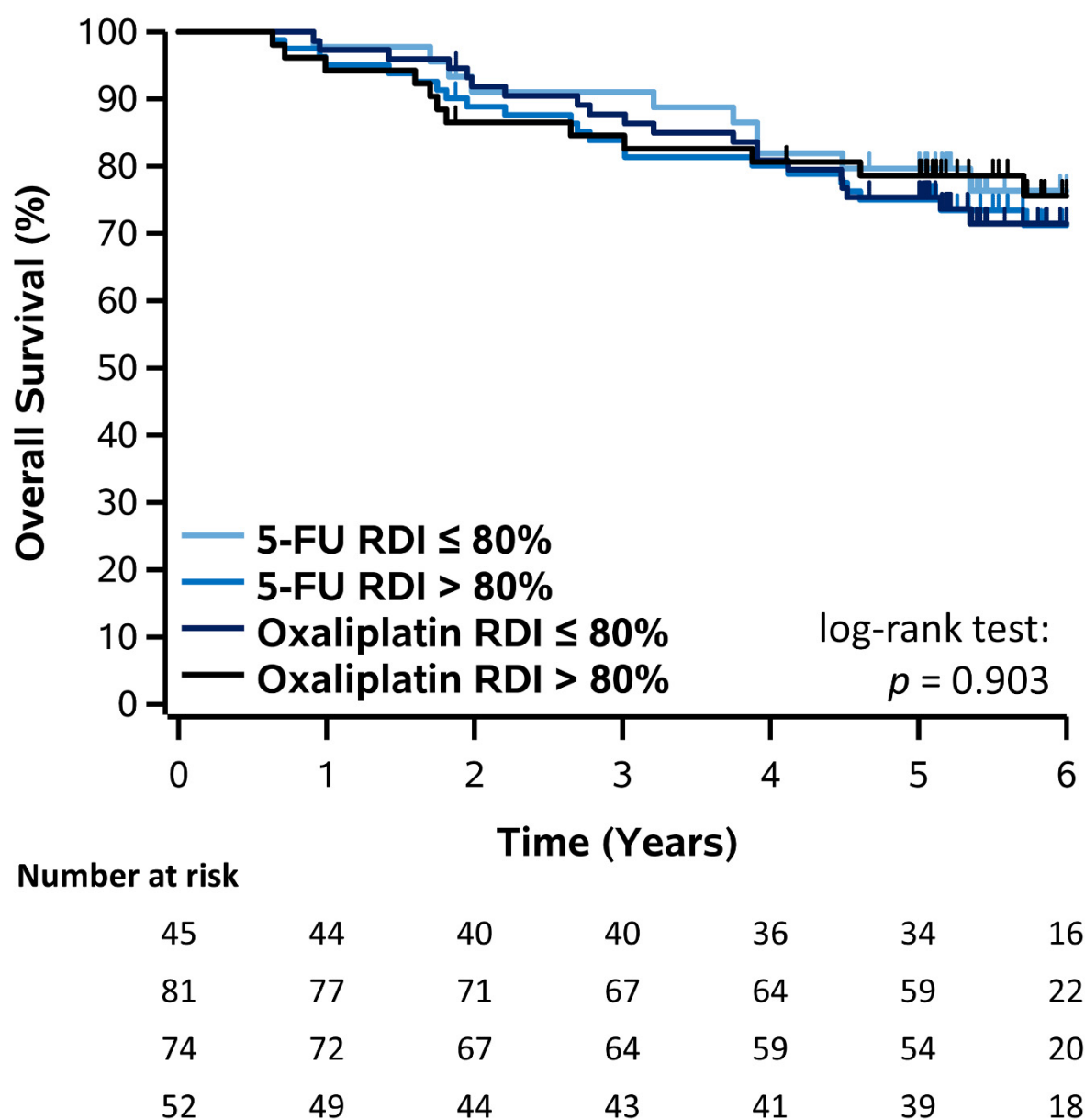
**Figure S1.** Kaplan–Meier plot of DFS stratified by RDI of capecitabine in patients receiving capecitabine.



**Figure S2.** Kaplan–Meier plot of DFS stratified by RDI of 5-FU and oxaliplatin in patients receiving FOLFOX.



**Figure S3.** Kaplan–Meier plot of OS stratified by RDI of capecitabine in patients receiving capecitabine.



**Figure S4.** Kaplan–Meier plot of OS stratified by RDI of 5-FU and oxaliplatin in patients receiving FOLFOX.