

Table S1. Advantages and disadvantages of the telemedicine during the COVID-19 pandemic based on previous studies.

1. Study	2. Advantages	3. Disadvantages
4. 26. Colbert, G.B.; Venegas-Vera, A.V.; Lerma, E.v. Utility of telemedicine in the COVID-19 era. <i>Rev. Cardiovasc. Med.</i> 2020, 21, 583–587. https://doi.org/10.31083/j.rcm.2020.04.188 . [26]	<ul style="list-style-type: none"> - possibility of contact with a doctor and maintaining social distance, quarantine - medical triage 	<ul style="list-style-type: none"> - limitation of physical examination - no access to imaging and laboratory tests
5. 27. Hincapié, M.A.; Gallego, J.C.; Gempeler, A.; Piñeros, J.A.; Nasner, D.; Escobar, M.F. Implementation and Usefulness of Tele-medicine During the COVID-19 Pandemic: A Scoping Review. <i>J. Prim. Care Community Health</i> 2020, 11, 2150132720980612. https://doi.org/10.1177/2150132720980612 . [27]	<ul style="list-style-type: none"> - carrying out the "Forward triage" - reducing the risk of infection - minimizing the use of personal protective equipment 	<ul style="list-style-type: none"> - inability to assess the patient's nonverbal communication
6. 28. De Albornoz, S.C.; Sia, K.-L.; Harris, A. The effectiveness of teleconsultations in primary care: Systematic review. <i>Fam. Pract.</i> 2022, 39, 168–182. https://doi.org/10.1093/fampra/cmab077 . [28]	<ul style="list-style-type: none"> - lower cost compared to a face to face visit 	<ul style="list-style-type: none"> - socio-economic barrier - more consultations
7. 29. Shaker, M.S.; Oppenheimer, J.; Grayson, M.; Stukus, D.; Hartog, N.; Hsieh, E.W.; Rider, N.; Dutmer, C.M.; Vander Leek, T.K.; Kim, H.; et al. COVID-19: Pandemic Contingency Planning for the Allergy and Immunology Clinic. <i>J. Allergy Clin. Immunol. Pract.</i> 2020, 8, 1477–1488.e5. https://doi.org/10.1016/j.jaip.2020.03.012 . [29]	<ul style="list-style-type: none"> - reducing the exposure of healthcare professionals to potentially infected patients - maintaining social distance - quick assessment of patients for COVID-19 infection - selection of patients' diagnoses and their severity 	<ul style="list-style-type: none"> - traps of virtual care - incorrect medical diagnoses

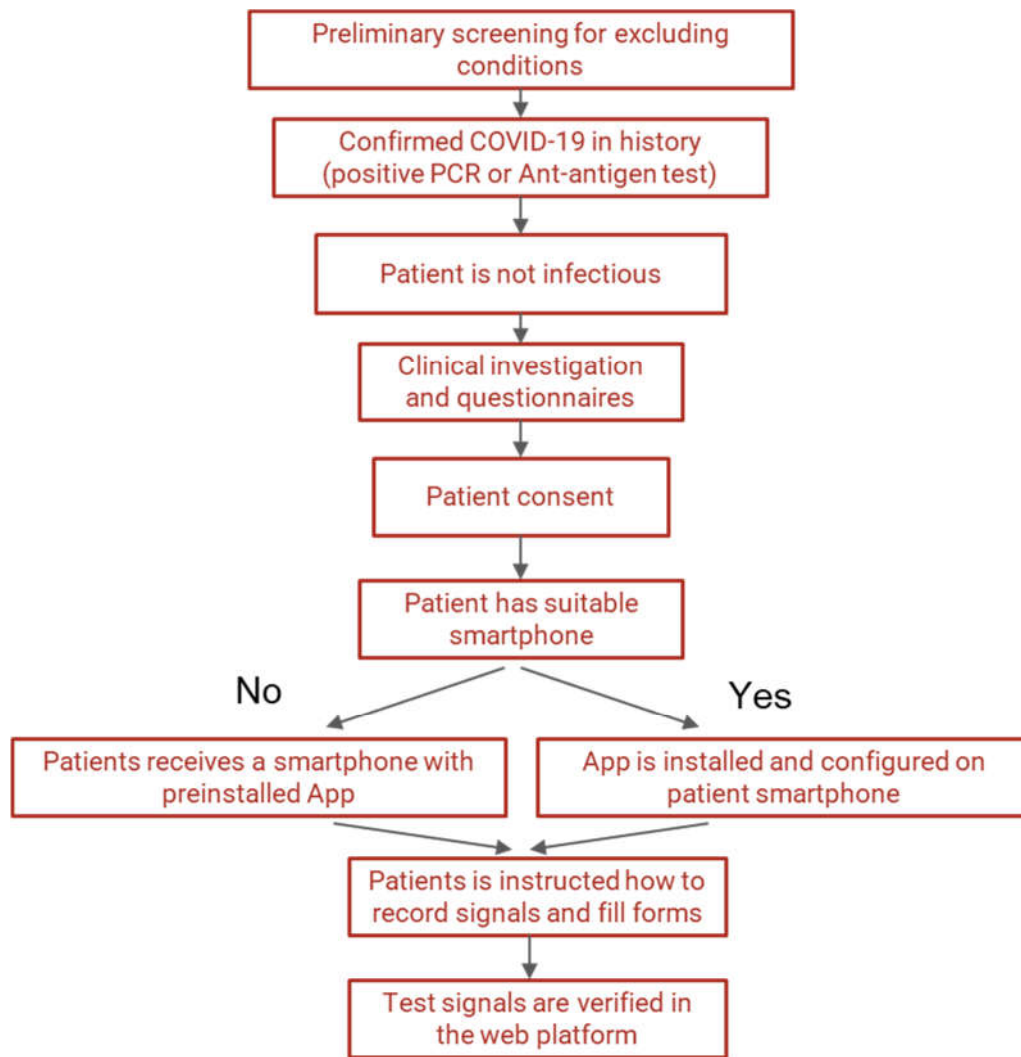


Figure S1: Patients flow for Long-COVID cohort of the study.