

Supplementary materials

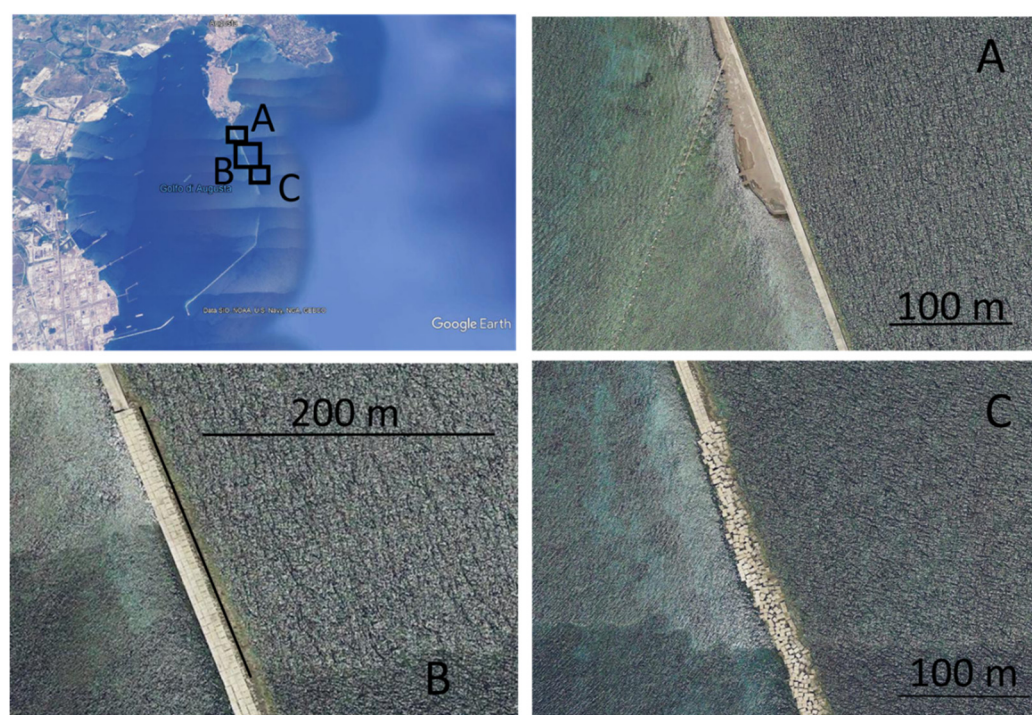


Figure S1. Breakwater system of the Augusta Harbor. The northernmost segment resulted to be composed by three different structures, i.e.: (from North to South, respectively) A), A concrete seawall (about 400 m length); B) a sequence of neatly arranged blocks (ca. 400 m length), and C), chaotically arranged concrete blocks (more than 1100 m; Figure S1 in supplementary materials). The other two segments that compose the breakwater have the same structure of C.