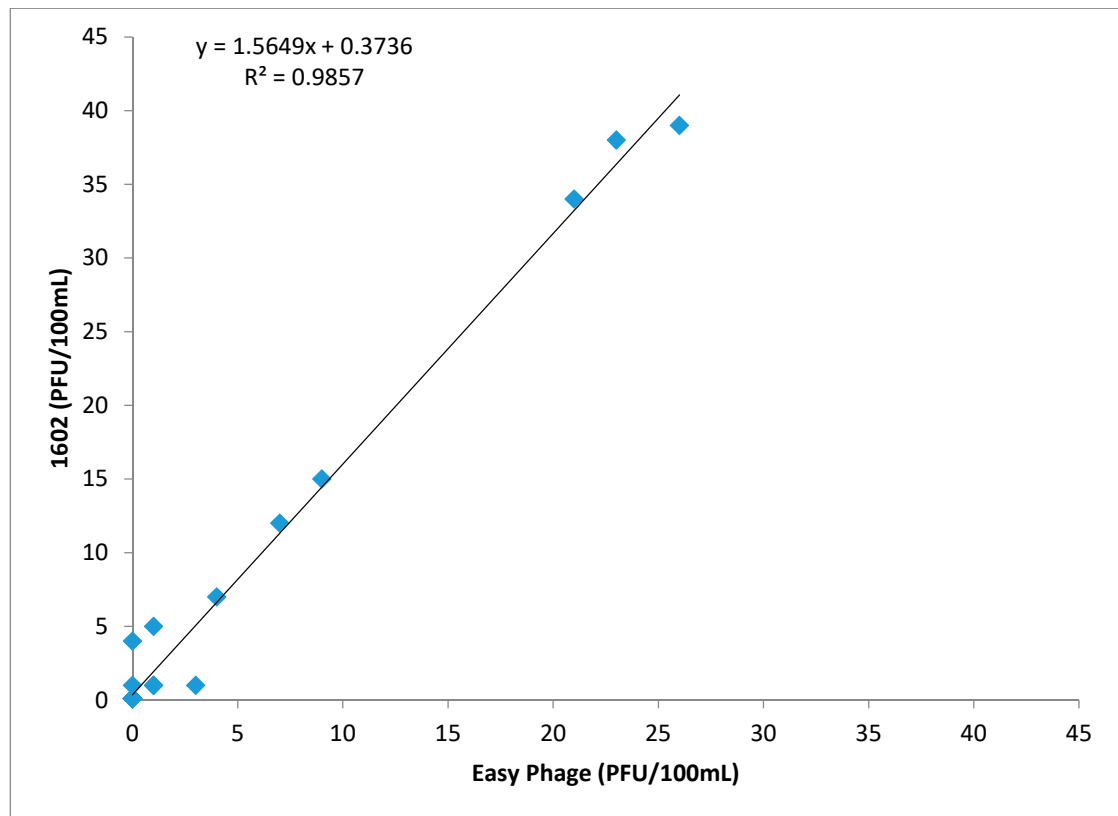
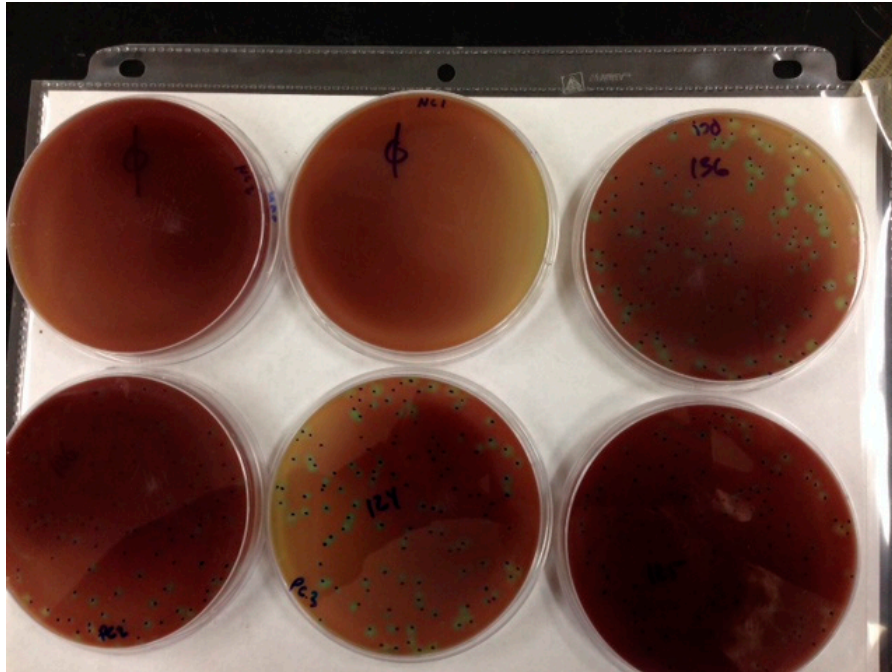


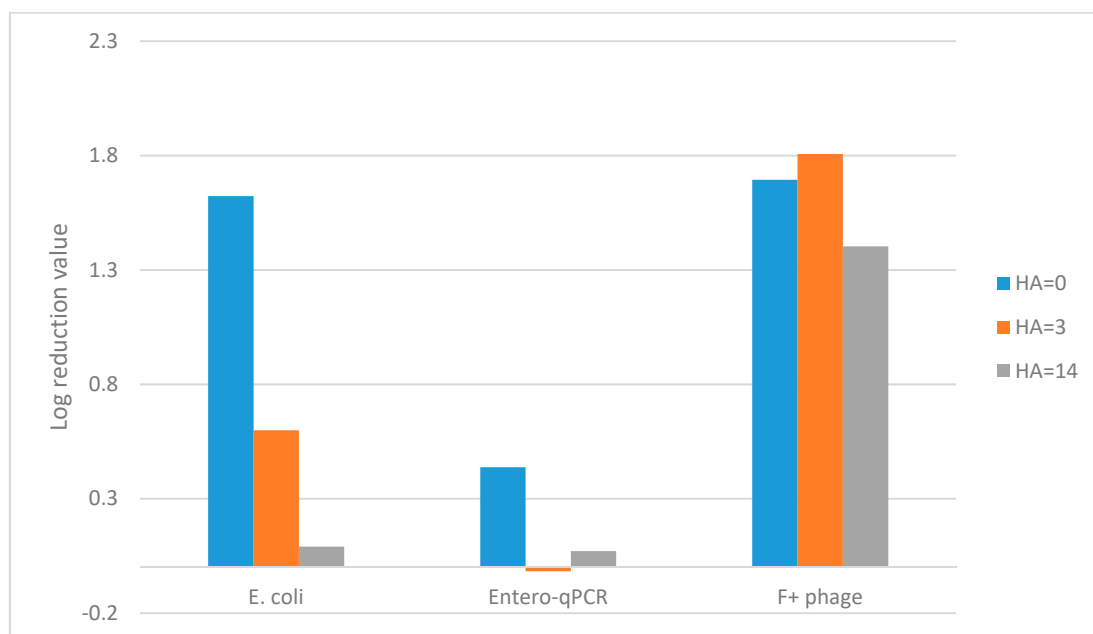
Supplemental Information



Supplemental Information Figure S1: Association between F+ coliphage measured using a simplified rapid method, and EPA method 1602.



Supplemental Information Figure S2: Appearance of EasyPhage plates after 19 hours of incubation with positive (MS2) controls.



Supplemental Information Figure S3: Impact of humic acid on the reduction of indicator microbes at time=60 minutes, by ozonation. HA= indicates the mass of humic acid (in grams) added to 100L of treated water.