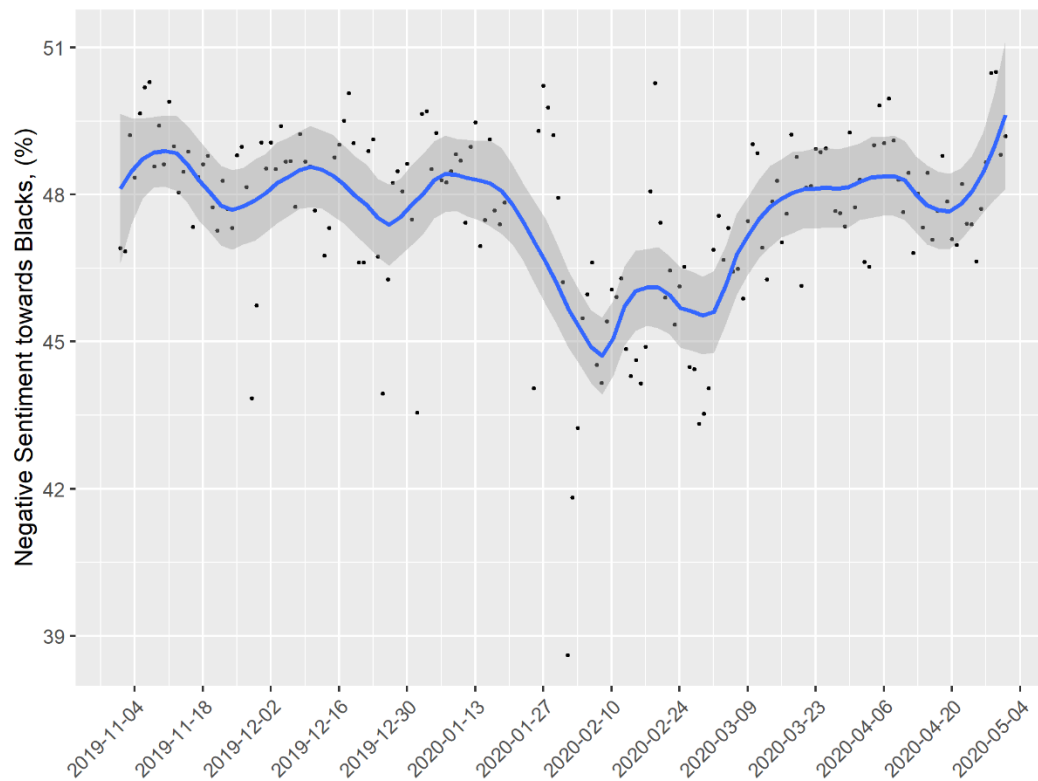


## Online Supplementary Materials

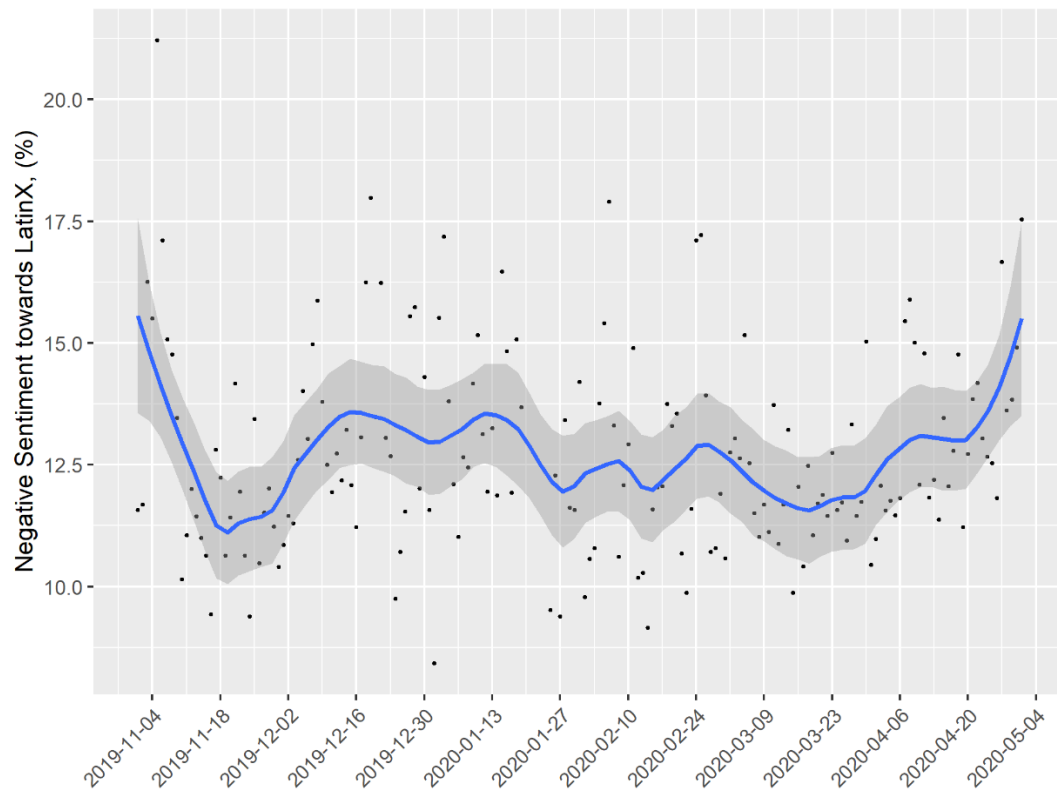
### Figures S1 – S5, Tables S1

**Figure S1.** Temporal changes in negative Black sentiment, November 2019 – April 2020



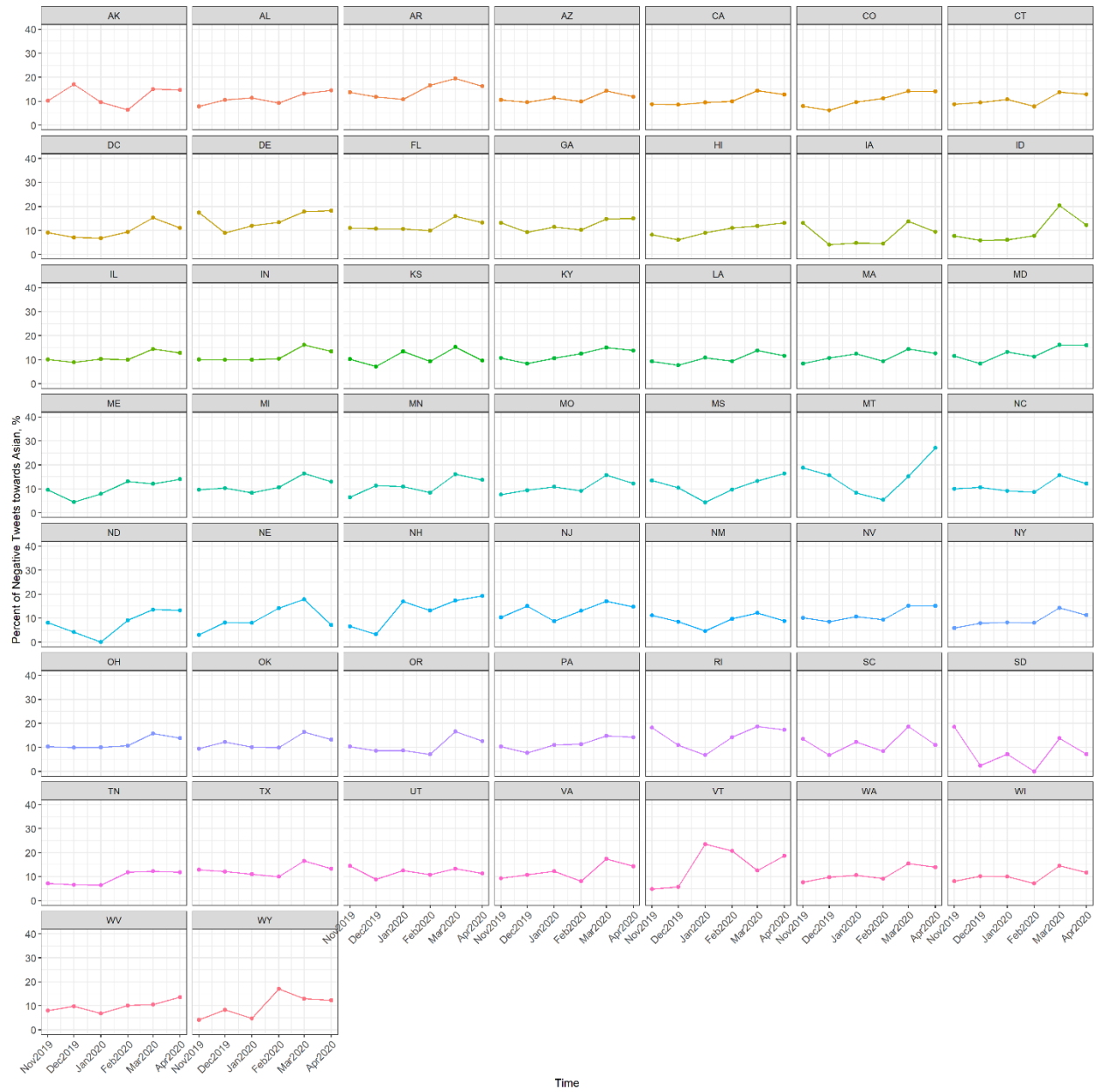
N=1,714,913 tweets. LOESS (locally estimated scatterplot smoothing) was performed to fit smooth curves to daily prevalence of negative sentiment. The shaded area represents 95% confidence bands around the smoothed trend line.

**Figure S2.** Temporal changes in negative Latinx sentiment, November 2019 – April 2020

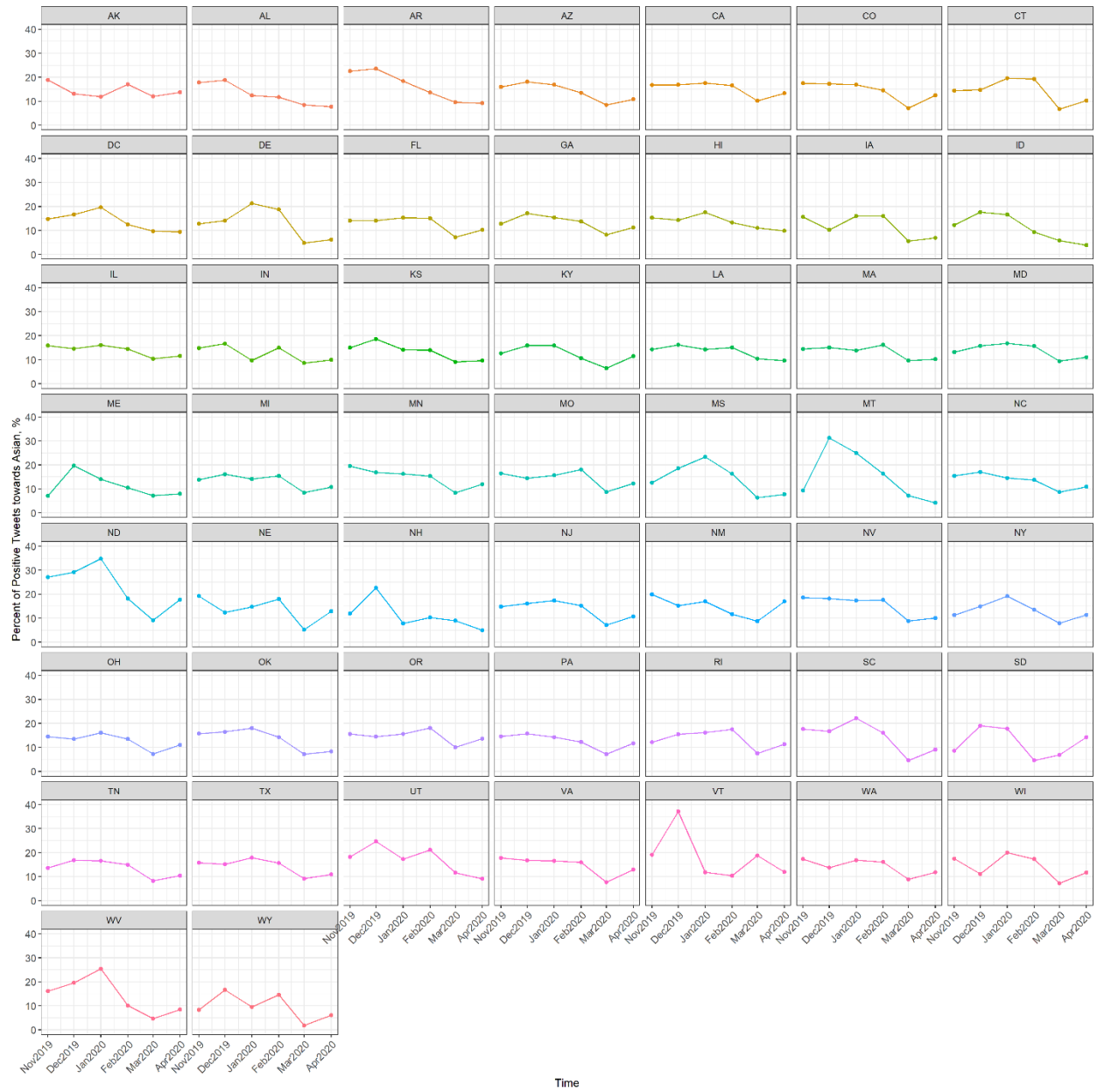


N=161,651 tweets. LOESS (locally estimated scatterplot smoothing) was performed to fit smooth curves to daily prevalence of negative sentiment. The shaded area represents 95% confidence bands around the smoothed trend line.

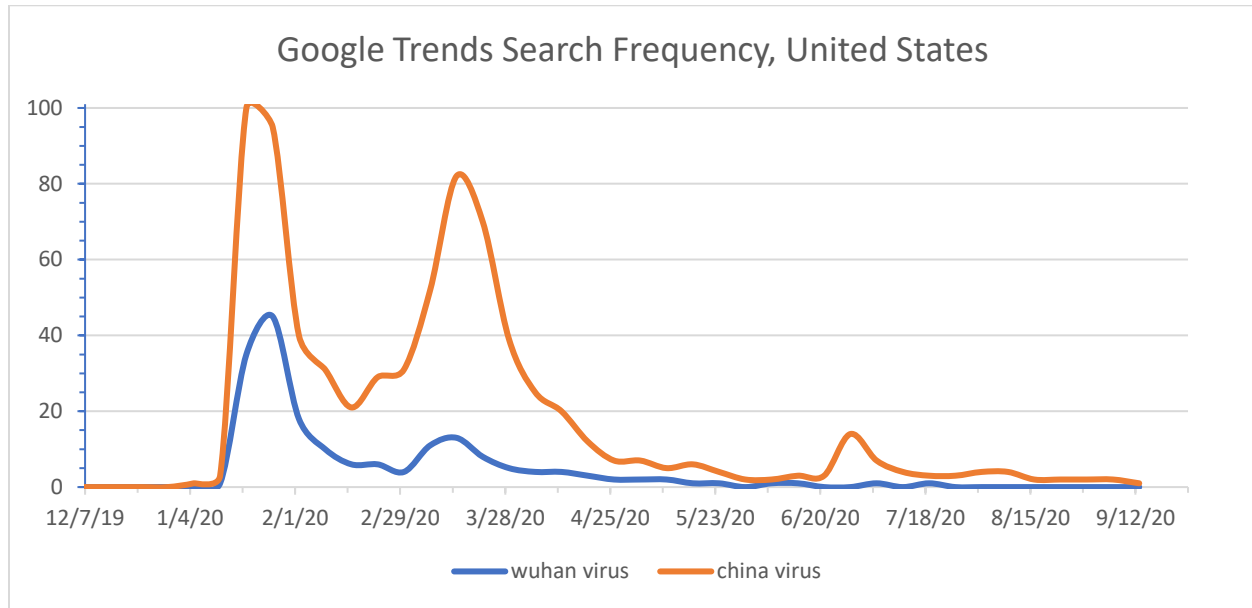
**Figure S3.** Temporal changes in negative Asian sentiment by state



**Figure S4.** Temporal changes in positive Asian sentiment by state



**Figure S5.** Temporal trends in Google Searches of “wuhan virus” and “china virus”



**Table S1.** Percent negative tweets using Asian and Chinese-related keywords by month, November 2019-June 2020.

	November	December	January	February	March	April	May	June
Racial/ethnic group	% (N)	% (N)	% (N)	% (N)	% (N)	% (N)	% (N)	% (N)
Asian	9.45 (31,774)	9.34 (30,476)	9.96 (27,588)	9.81 (32,925)	15.21 (65,915)	13.11 (46,585)	12.02 (40,356)	13.41 (30,150)
Chinese	5.82 (9,558)	6.78 (9,277)	8.20 (8,857)	8.89 (10,834)	15.75 (37,780)	13.17 (23,279)	11.42 (14,952)	11.11 (9,797)

Percentages refer to percent of tweets in each racial/ethnic category that are negative. N refer to the total number of tweets for that racial/ethnic category for that month.