

Article

Galdieria sulphuraria: an extremophilic algae as source of antiviral bioactive compounds

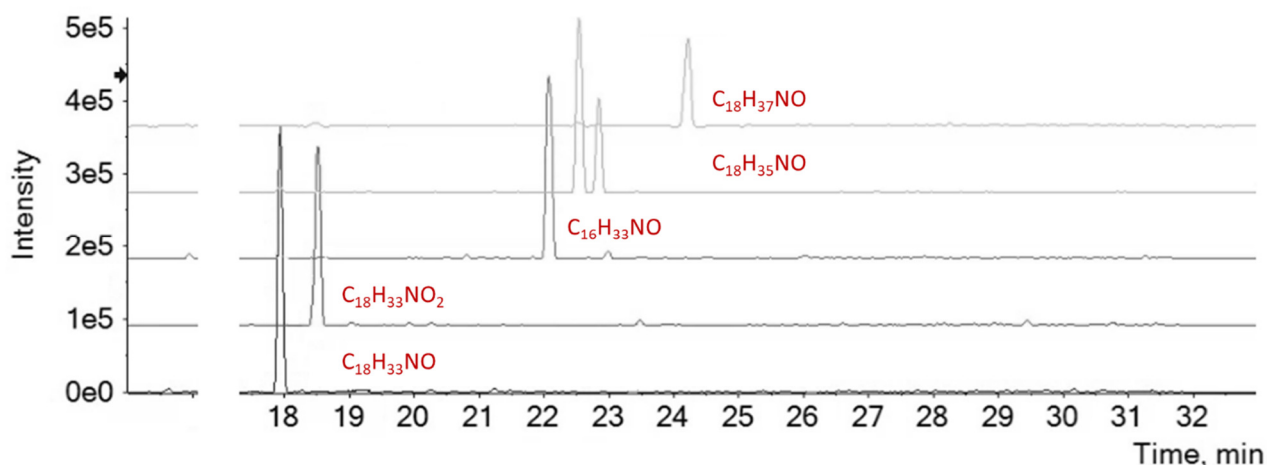


Figure S1. Extracted ion chromatograms (XICs) of detected and tentatively identified fatty acid amides.

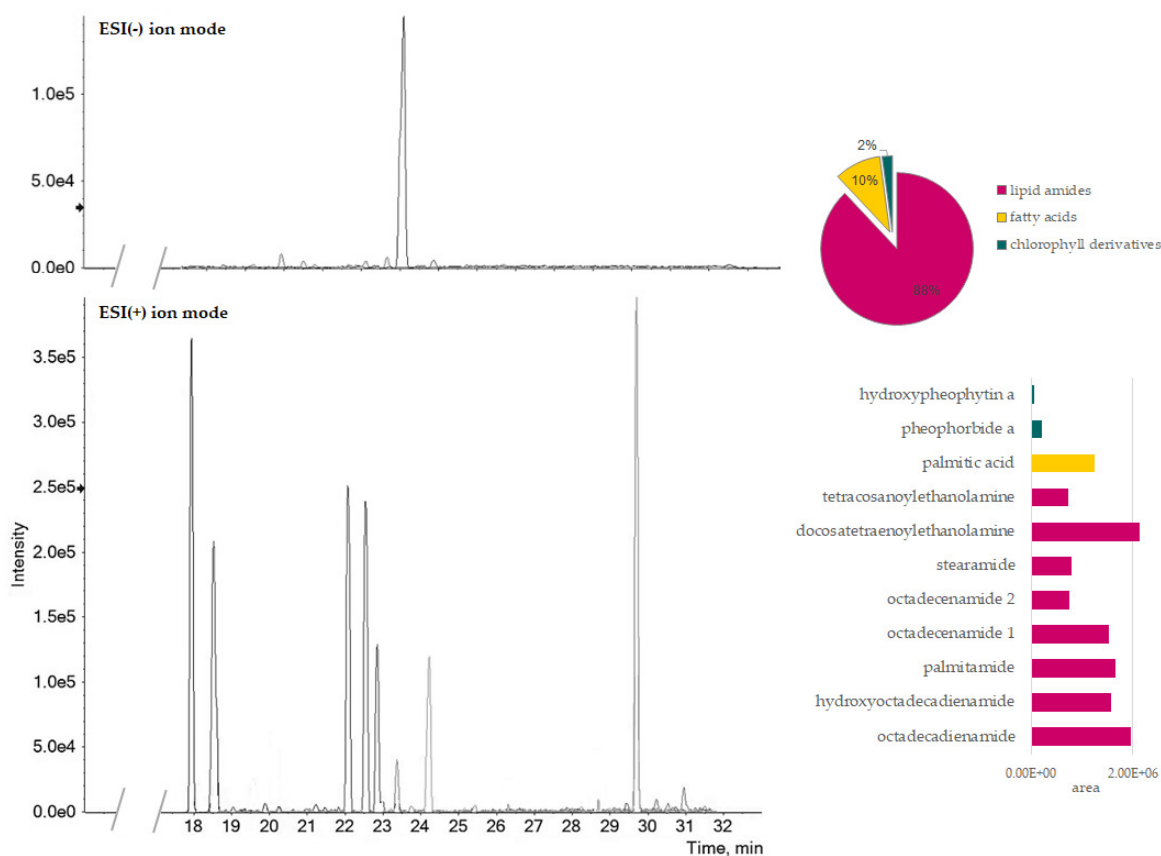


Figure S2. TICs (Total Ion Chromatograms) acquired in ESI(-) ion mode (upper panel) and ESI(+) ion mode (lower panel). Relative quantitation data are also reported.

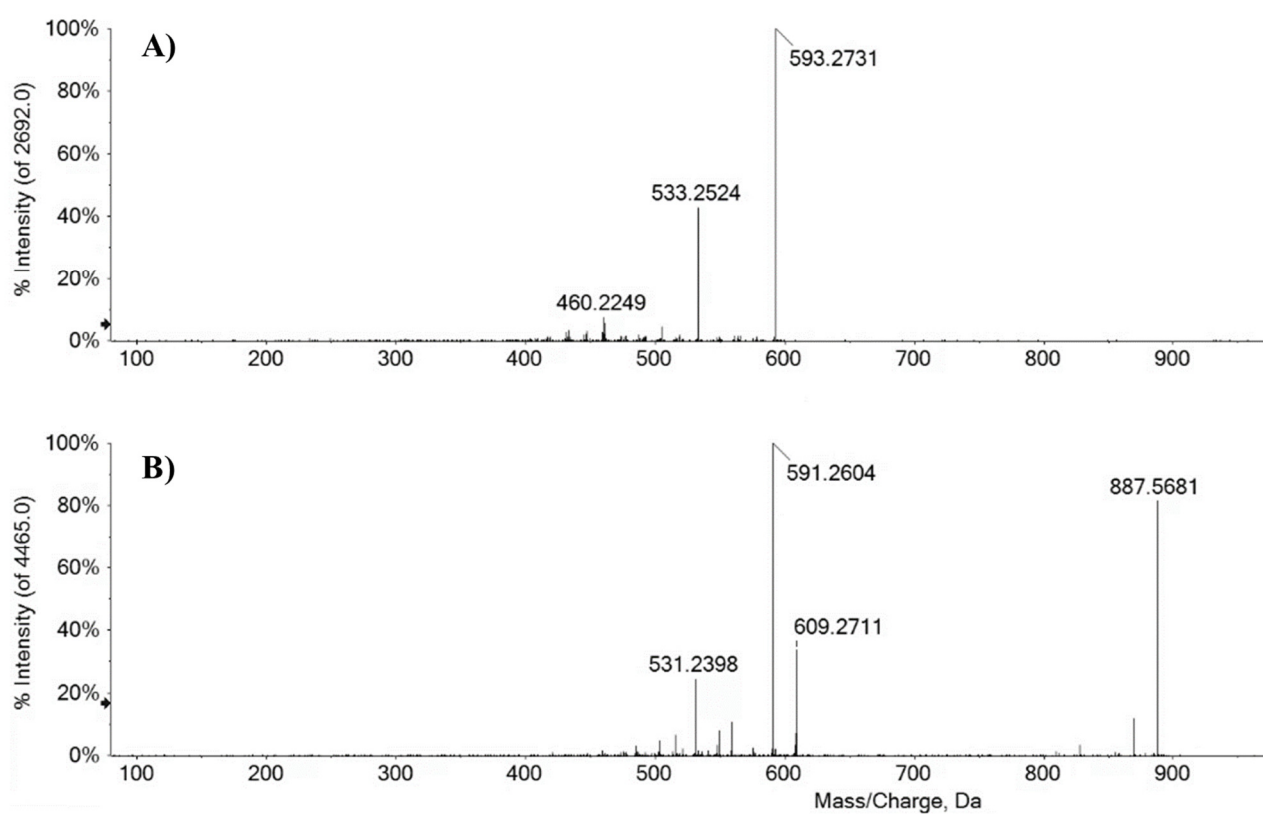


Figure S3. TOF-MS/MS spectrum of (A) pheophorbide a and (B) hydroxypheophytin a.