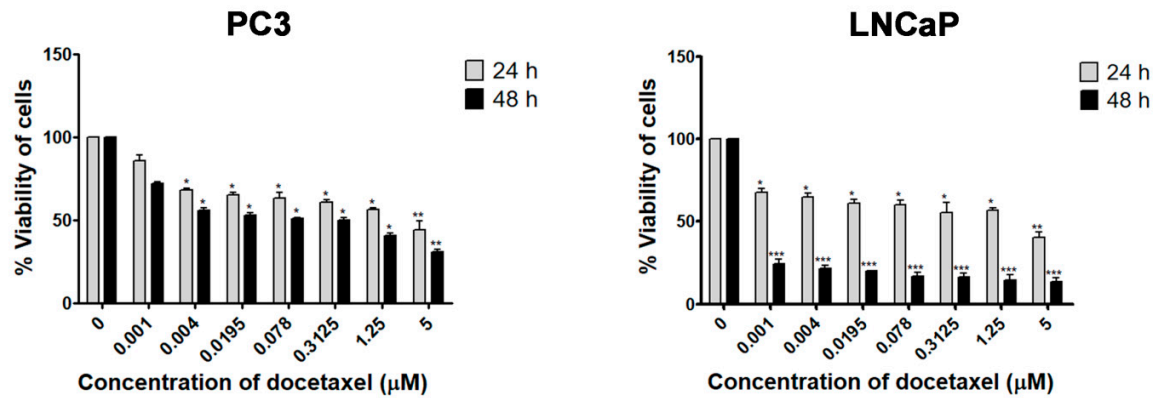


Supplementary figures



Supplementary Figure S1. Docetaxel treatment affects the viability of human PCa cell lines (PC3 and LNCaP). PCa cell lines were exposed to various concentrations of docetaxel at 24 and 48 h. MTT assay was performed to evaluate the cell viability. Values represent mean \pm SD. * $p < 0.05$; ** $p < 0.01$; *** $p < 0.001$. The IC_{50} of docetaxel in PC3 were 2.01 and 0.45 μM , whereas for LNCaP were 2.20 and 0.001 μM , respectively.

Supplementary Table

Supplementary Table S1. The primers used for Real-time qPCR.

Gene	Forward primer	Reverse primer
GAPDH	5'-GAAAGCCTGCCGGTGACTAA-3'	5'-GCATCACCCGGAGGAGAAAT -3'
RUNX1	5'-AGGCAGGACGAATCACTG-3'	5'-AGTGTGATTTCGTCCTGCCTG-3'
MMP 2	5'-TTGACGGTAAGGACGGACT-3'	5'-CTTGCAGTACTCCCCATCG-3'
MMP 9	5'-TTGACAGCGACAAGAAGTGG-3'	5'-CCCTCAGTGAAGCGGTACAT-3'
E-cadherin	5'-CGGGAATGCAGTTGAGGATC-3'	5'-AGGATGGTGTAAGCGATGGC-3'
Vimentin	5'-GCAGAATCATCACGAAGTGG-3'	5'-GCATGGTGATGTTGGACTCC-3'