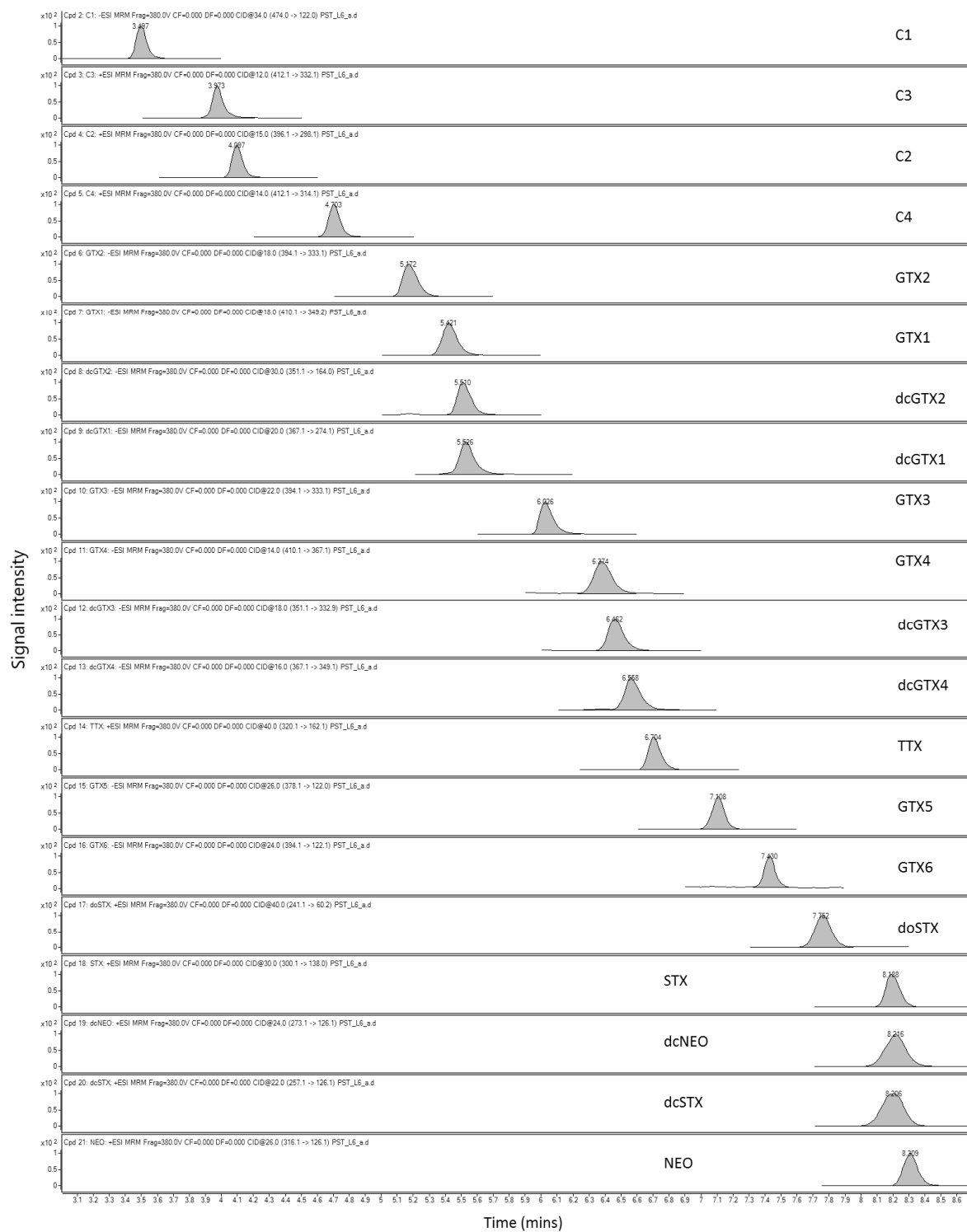


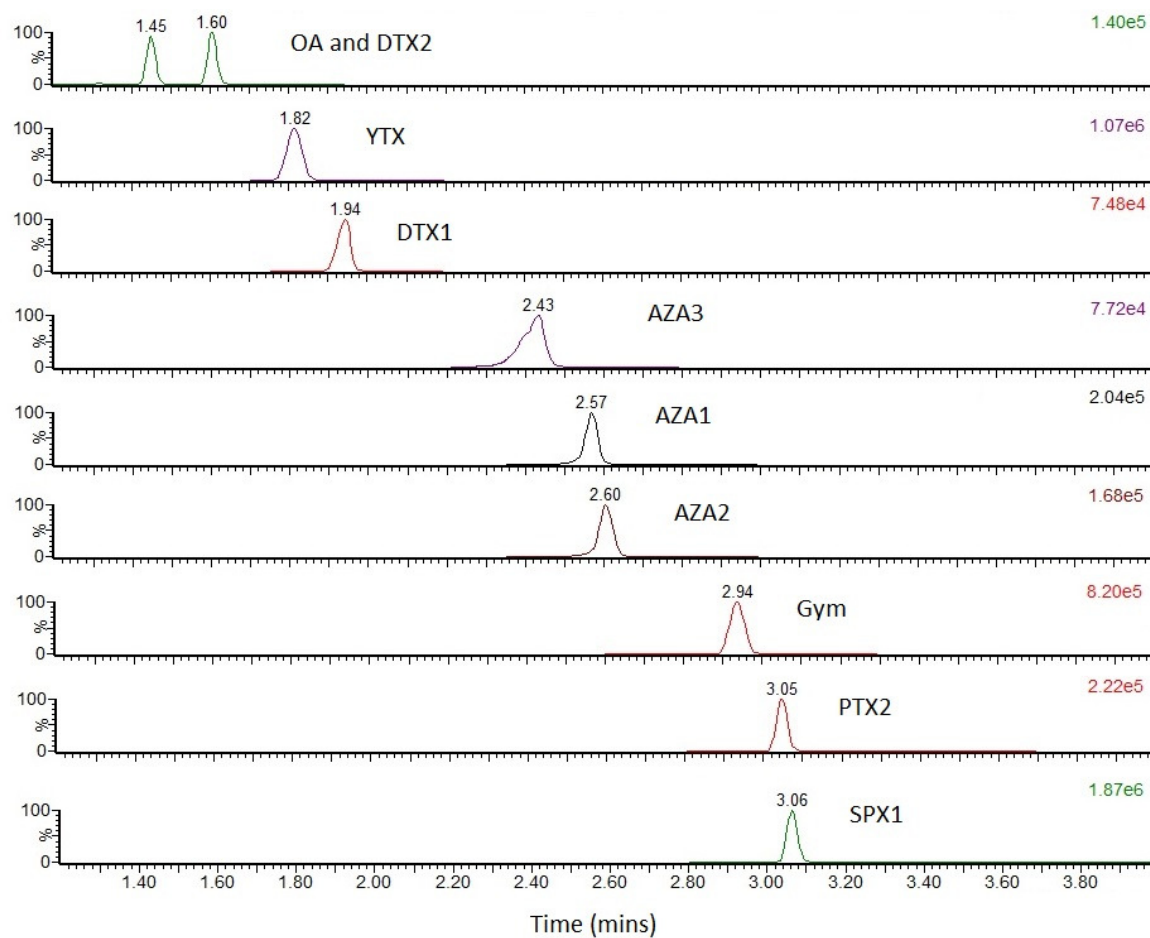
## Supplementary Figure S1

Example MRM chromatograms illustrating chromatographic separation and detection of PST analogues from a mid-level calibration standard prepared in shellfish extract



### Supplementary Figure S2

Example MRM chromatograms illustrating chromatographic separation and detection of LT analogues from a mid-level calibration standard prepared in shellfish extract



**Figure S3.** LC-UV chromatograms showing evidence of domoic acid in positive laboratory reference material. i – Matrix peaks ii – Domoic acid iii – epi-domoic acid.

