

Supplementary Materials

A Multi-Species Investigation of Sponges' Filtering Activity Towards

Marine Microalgae

Despoina Varamogianni-Mamatsi ^{1,2}, Thekla I. Anastasiou ¹, Emmanouela Vernadou ¹, Nikos Papandroulakis ¹, Nicolas Kalogerakis ², Thanos Dailianis ^{1,*} and Manolis Mandalakis ^{1,*}

¹ Institute of Marine Biology, Biotechnology & Aquaculture, Hellenic Centre for Marine Research, 715 00 Heraklion Crete, Greece

² School of Chemical and Environmental Engineering, Technical University of Crete, 731 00 Chania, Greece

* Correspondence: M.M. mandalakis@hcmr.gr; Tel.: +30-2810-337855; Fax: +30-2810-337822; T.D. thanosd@hcmr.gr; Tel.: +30-2810-337741; Fax: +30-2810-337822

CONTENTS

Table S1. Mean wet weight of the used sponge fragments, derived from the measurements prior and after the clean-up experiments. These are presented along with standard deviation and relative standard deviation (%RSD).

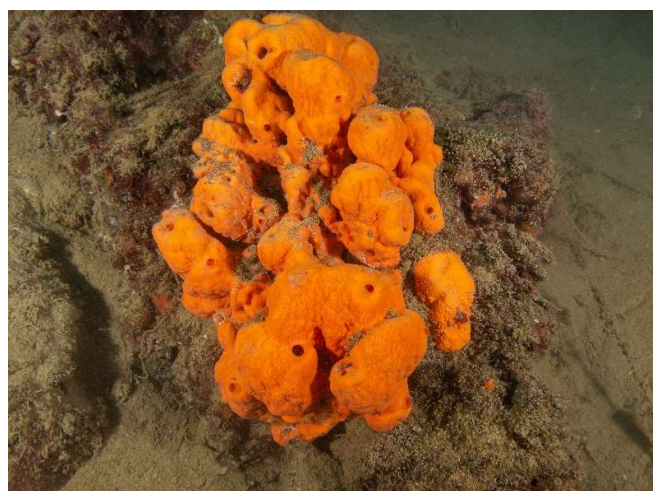
Figure S1. Photos of representative individuals of (a) *Agelas oroides*, (b) *Axinella cannabina*, (c) *Chondrosia reniformis* and (d) *Sarcotragus foetidus* taken from their collection sites.

Figure S2. Photos of the regenerated fragments of (a) *Agelas oroides*, (b) *Axinella cannabina*, (c) *Chondrosia reniformis* and (d) *Sarcotragus foetidus* in the land-based tanks.

Table S1. Mean wet weight of the used sponge fragments, derived from the measurements prior and after the clean-up experiments. These are presented along with standard deviation and relative standard deviation (%RSD).

	<i>A. oroides</i>					<i>A. cannabina</i>				
Fragment No	#1	#2	#3	#4	#5	#1	#2	#3	#4	#5
Average wet weight (g)	75.2	70.6	74.7	67.7	60.9	43.7	57.8	50.2	54.7	60.3
Standard deviation (g)	3.5	1.3	3.1	4.2	1.1	6.8	3.4	4.5	2.5	3.3
%RSD	5%	2%	4%	6%	2%	16%	6%	9%	5%	6%

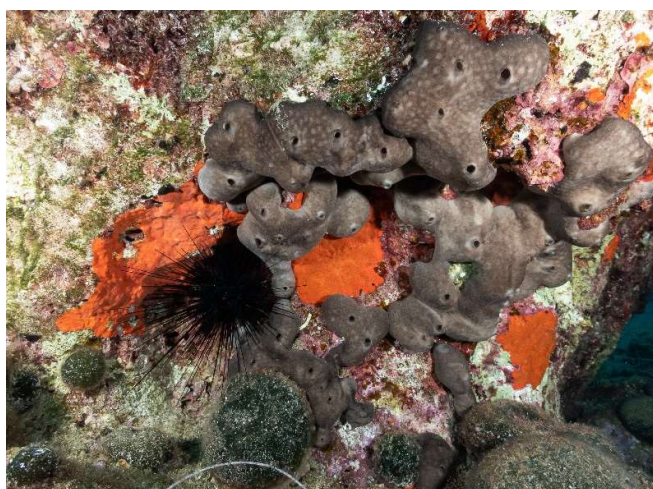
	<i>C. reniformis</i>					<i>S. foetidus</i>				
Fragment No	#1	#2	#3	#4	#5	#1	#2	#3	#4	#5
Average wet weight (g)	82.8	90.5	74.0	103.2	79.9	134.8	100.5	77.2	94.4	139.5
Standard deviation (g)	4.7	1.9	5.0	0.4	1.7	0.7	8.1	3.6	0.3	6.6
%RSD	6%	2%	7%	0%	2%	1%	8%	5%	0%	5%



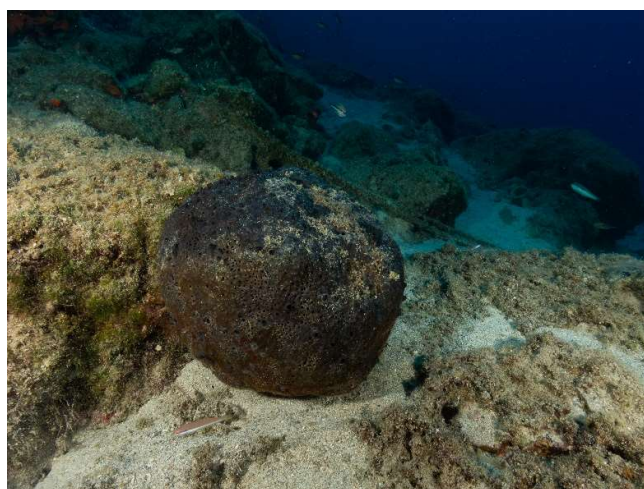
(a)



(b)



(c)



(d)

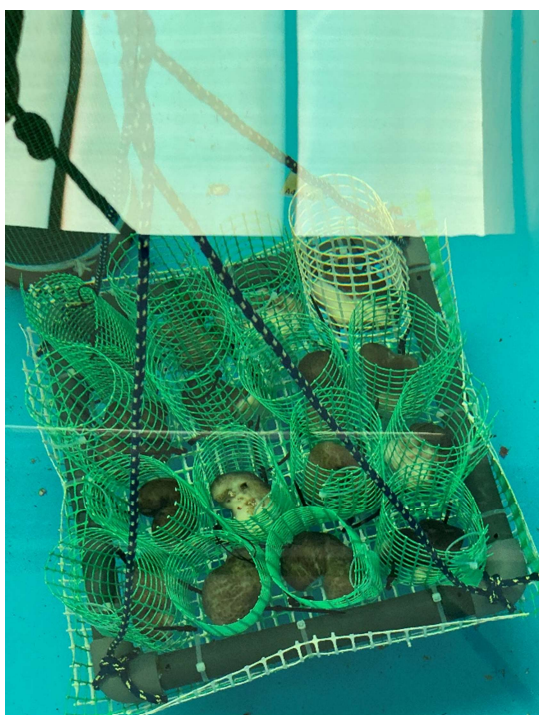
Figure S1. Photos of representative individuals of (a) *Agelas oroides*, (b) *Axinella cannabina*, (c) *Chondrosia reniformis* and (d) *Sarcotragus foetidus* taken from their collection sites.



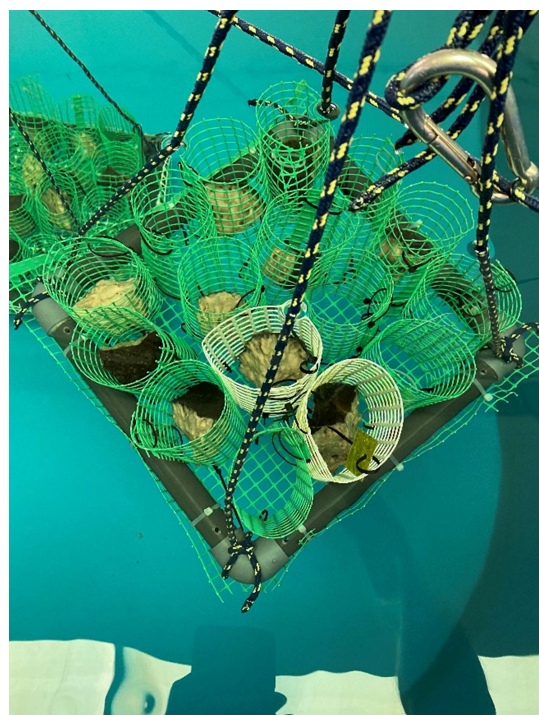
(a)



(b)



(c)



(d)

Figure S2. Photos of the regenerated fragments of (a) *Agelas oroides*, (b) *Axinella cannabina*, (c) *Chondrosia reniformis* and (d) *Sarcotragus foetidus* in the land-based tanks.