

Supplementary Materials

Fig S1. Gating strategy for the analysis of CD14⁺⁺CD16⁻, CD14⁺⁺CD16⁺, CD14⁺CD16⁺ and CD4⁺ and CD8⁺ monocytes and T cells subsets, respectively.

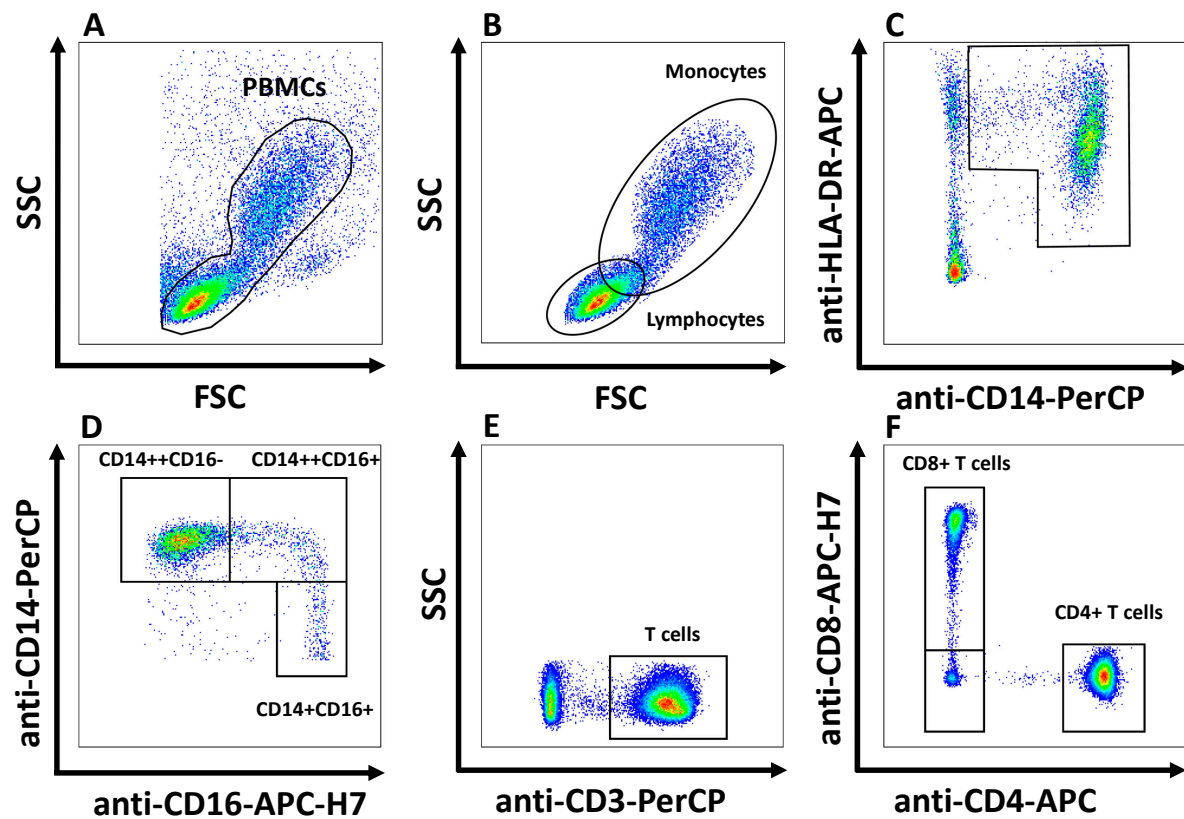


Fig S2. Box plot of BR1 (A) and BR (2) expression on CD3+ (left panel) CD4+ (center panel) and CD8+ (right panel) cells.

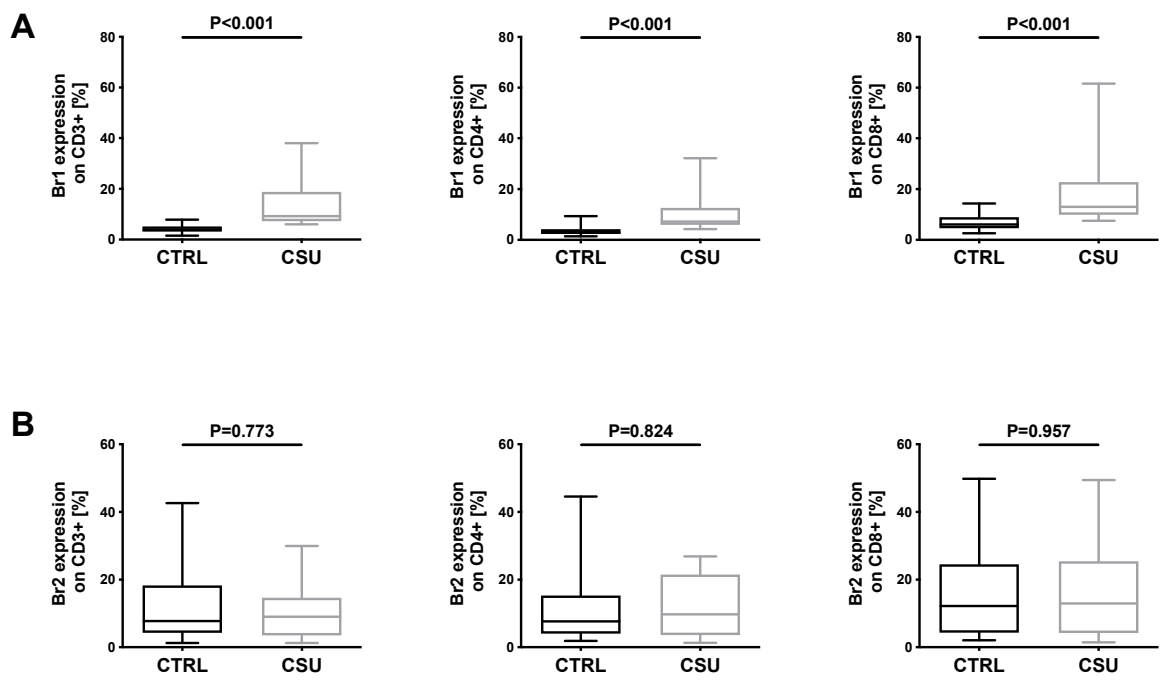


Fig S3. Box plot of BR1 (A) and BR (2) expression on Monocytes, CD14⁺⁺CD16⁻, CD14⁺⁺CD16⁺ and CD14⁺CD16⁺ cells.

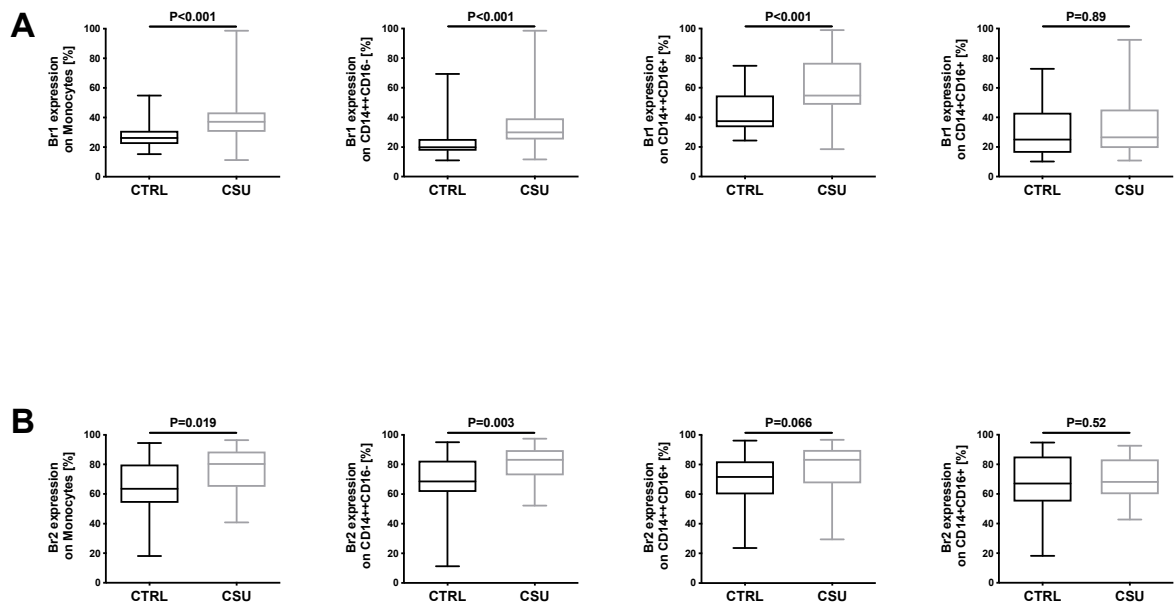


Fig S4. Representative Facs plots for BR1 and BR2 expression on T cells (FMO Control).

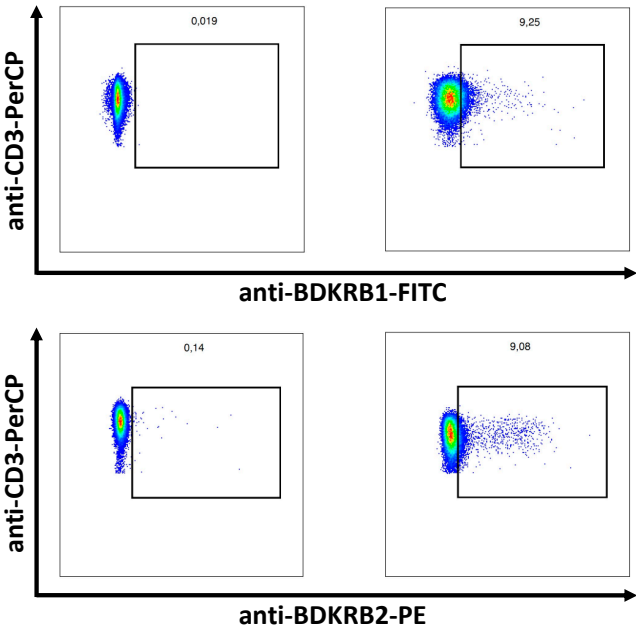


Fig S5. Representative Facs plots for BR1 and BR2 expression on monocytes (FMO Control).

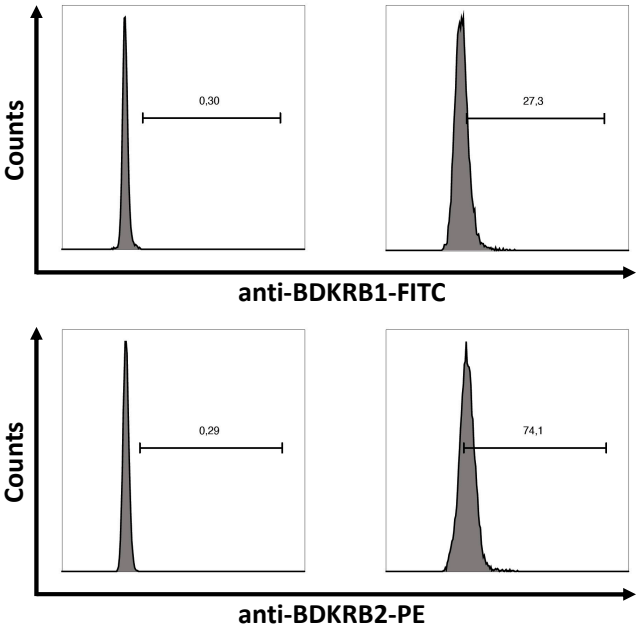


Table S1

Antibody	Clone	Fluorochrome	Manufacturer
anti-CD3	SK7	PerCP	BD, San Jose, CA, USA
anti-CD4	RPA-T4	APC	BD
anti-CD8	SK1	APC-H7	BD
anti-HLA-DR	L243	APC	BD
anti-CD14	MoP9	PerCP	BD
<i>anti-CD16</i>	3G8	APC-H7	BD
anti-BDKRB1	polyclonal	FITC	Bioss Antibodies, Woburn, MA, USA
anti-BDKRB2 (primary)	EPR5646		Abcam, Cambridge, UK
secondary antibody anti-rabbit IgG	2A9	PE	Abcam

Table S1: List of the antibodies used for the staining.