

Figure S1. Representative chromatograms of a mobile phase (A), internal standard (B), adenosine at LOQ (C), which is 3.75 nM, blood sample (D) and adenosine at HOQ (E), which is 1872 nM.

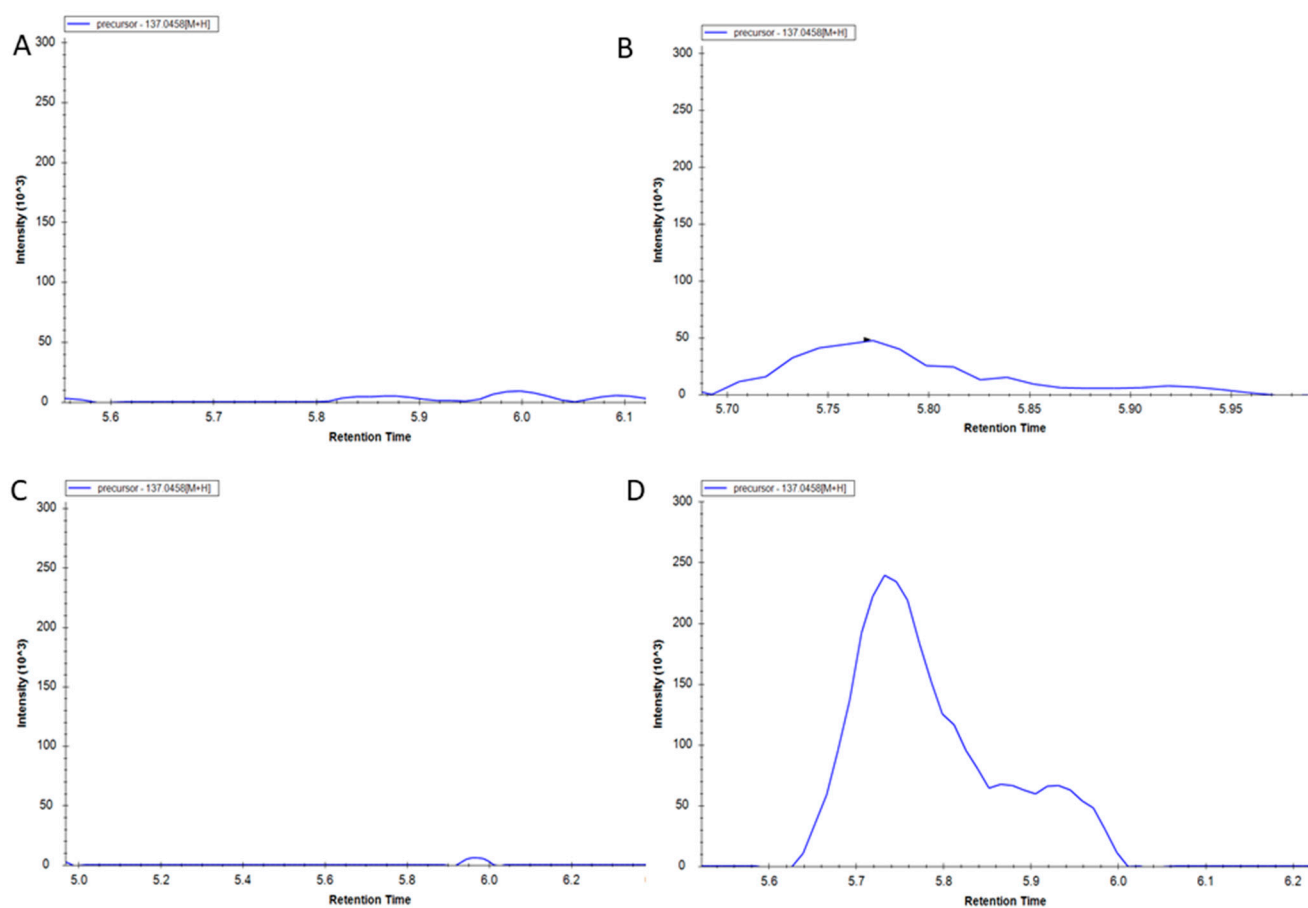


Figure S2. Representative chromatograms of a mobile phase (A), hypoxanthine at LOQ (B), which is 73.5 nM, blood sample (C) and hypoxanthine at HOQ (D), which is 7353 nM.

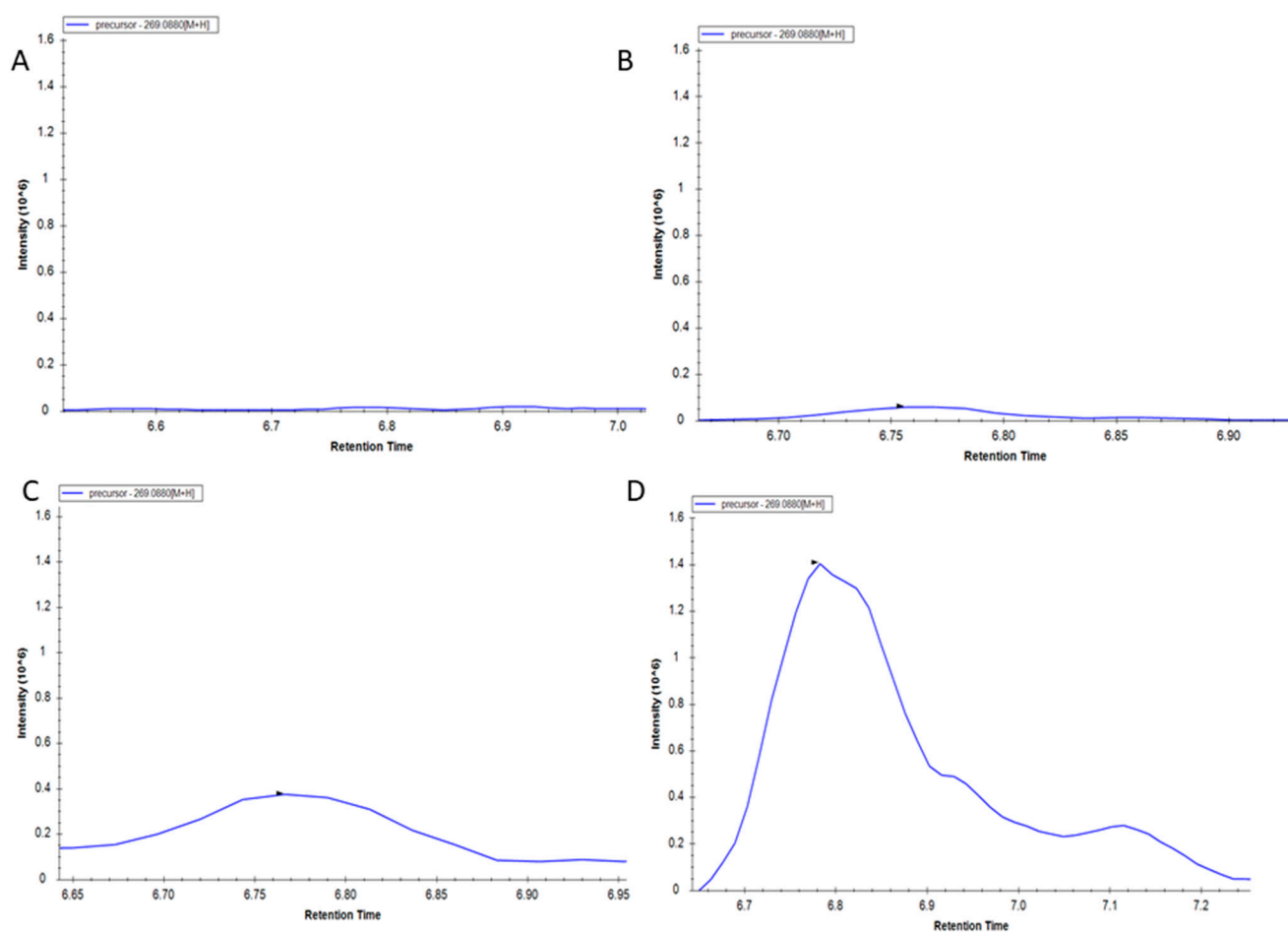


Figure S3. Representative chromatograms of a mobile phase (A), inosine at LOQ (B), which is 37.2 nM, blood sample (C) and inosine at HQ (D), which is 3718 nM.

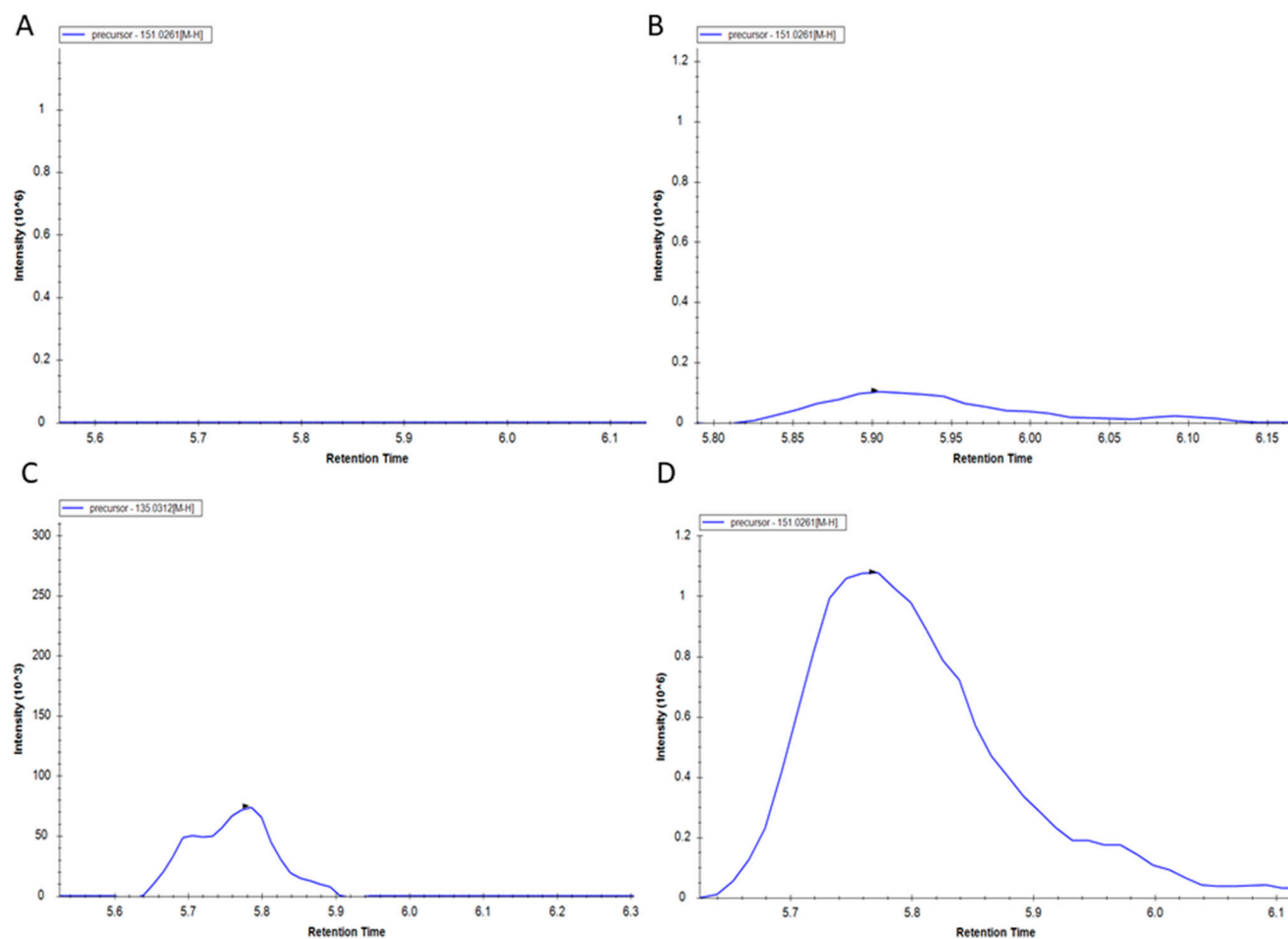


Figure S4. Representative chromatograms of a mobile phase (A), xanthine at LOQ (B), which is 6.5 nM, blood sample (C) and xanthine at HOQ (D), which is 6579 nM.