



# Pentagalloyl Glucose and Cisplatin Combination Treatment Exhibits a Synergistic Anticancer Effect in 2D and 3D Models of Head and Neck Carcinoma

Jiraporn Kantapan<sup>1,2</sup>, Nuttawadee Intachai<sup>2</sup>, Nopawit Khamto<sup>3,4</sup>, Puttinan Meepowpan<sup>3,5</sup>, Padchanee Sangthong<sup>3</sup>, Kittichai Wantanajittikul<sup>2</sup>, Nathupakorn Dechsupa<sup>1,2,\*</sup> and Imjai Chitapanarux<sup>6\*</sup>

<sup>1</sup>Molecular Imaging and Therapy Research Unit, Faculty of Associated Medical Sciences, Department Radiologic Technology, Chiang Mai University, Chiang Mai 50200, Thailand

<sup>2</sup>Faculty of Associated Medical Sciences, Department Radiologic Technology, Chiang Mai University, Chiang Mai 50200, Thailand

<sup>3</sup>Faculty of Science, Department of Chemistry, Chiang Mai University, Chiang Mai 50200, Thailand

<sup>4</sup>Graduate School, Chiang Mai University, Chiang Mai 50200, Thailand

<sup>5</sup>Center of Excellence in Material Science and Technology, Chiang Mai University, Chiang Mai 50200, Thailand

<sup>6</sup>Faculty of Medicine, Department of Radiology, Division of Radiation Oncology, Chiang Mai University, Chiang Mai 50200, Thailand

**\* Correspondence:**

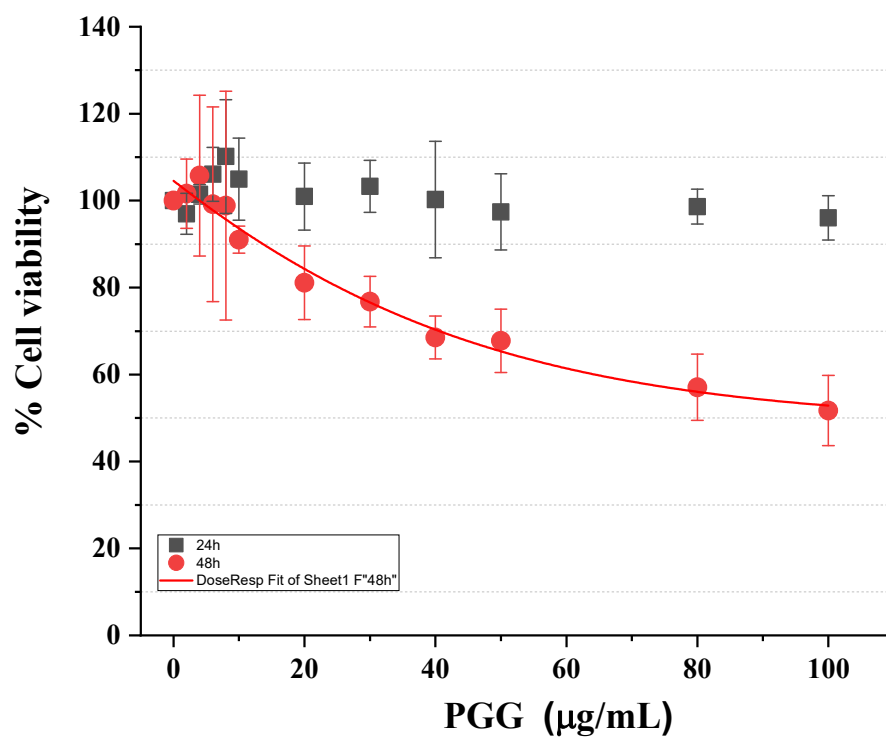
Nathupakorn Dechsupa

Nathupakorn.d@cmu.ac.th

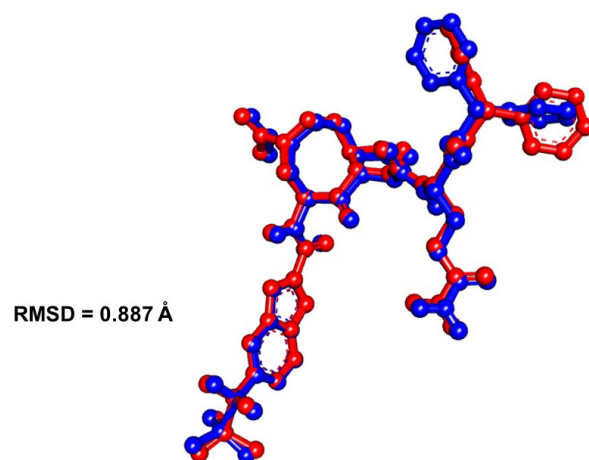
Imjai Chitapanarux

imjai.chitapanarux@cmu.ac.th

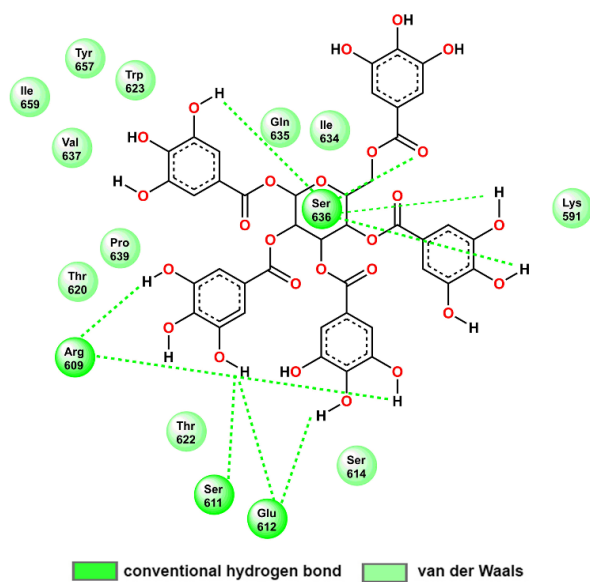
**Supplementary Materials:** Figure S1: The cell proliferation inhibitory effect of PGG on normal mouse fibroblasts L929 cells in the 2D culture determined by the MTT assay; Figure S2: Superimposition of redocked (blue) and co-crystallized (red) ligands of SI109 inhibitor for validation of docking protocol of STAT3 receptor; Figure S3: Two-dimensional protein-ligand interactions of STAT3-PGG complex from molecular docking simulation; Figure S4: The uncropped western blot images corresponding to Figure 3d; Figure S5: The uncropped western blot images corresponding to Figure 3e; Figure S6: The uncropped western blot images corresponding to Figure 5a; Figure S7: The uncropped western blot images corresponding to Figure 5c.



**Supplementary Figure S1.** The cell proliferation inhibitory effect of PGG on normal mouse fibroblasts L929 cells in the 2D culture determined by the MTT assay.



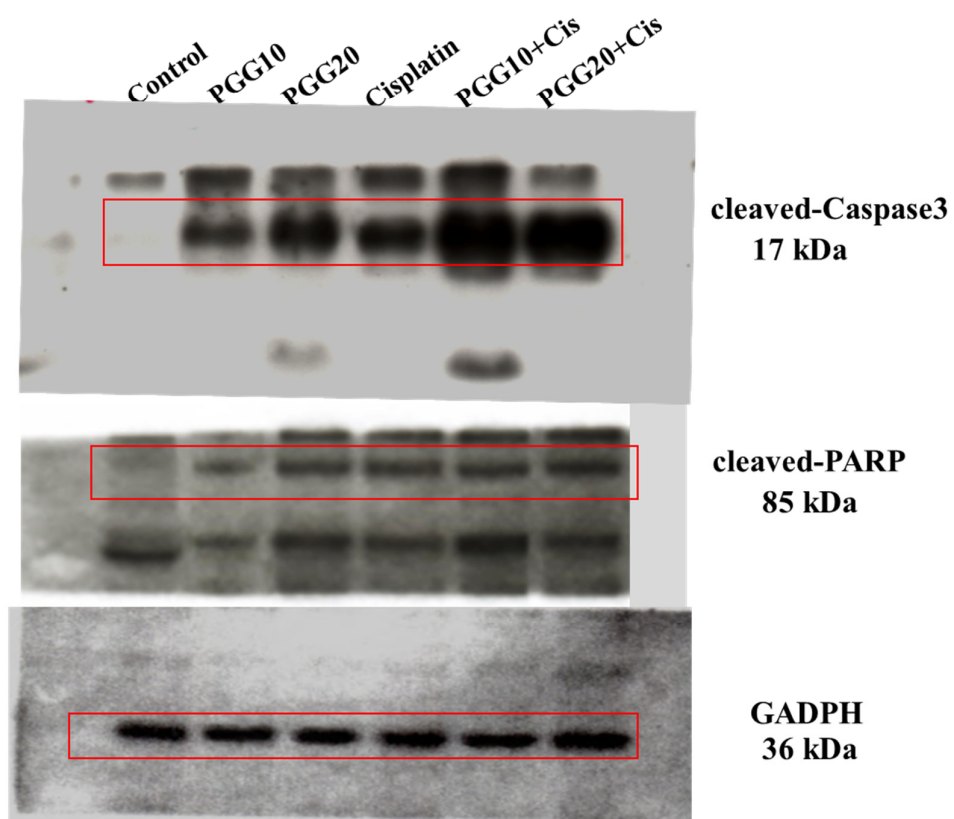
**Supplementary Figure S2.** Superimposition of redocked (blue) and co-crystallized (red) ligands of SI109 inhibitor for validation of docking protocol of STAT3 receptor.



**Supplementary Figure S3.** Two-dimensional protein-ligand interactions of STAT3-PGG complex from molecular docking simulation.



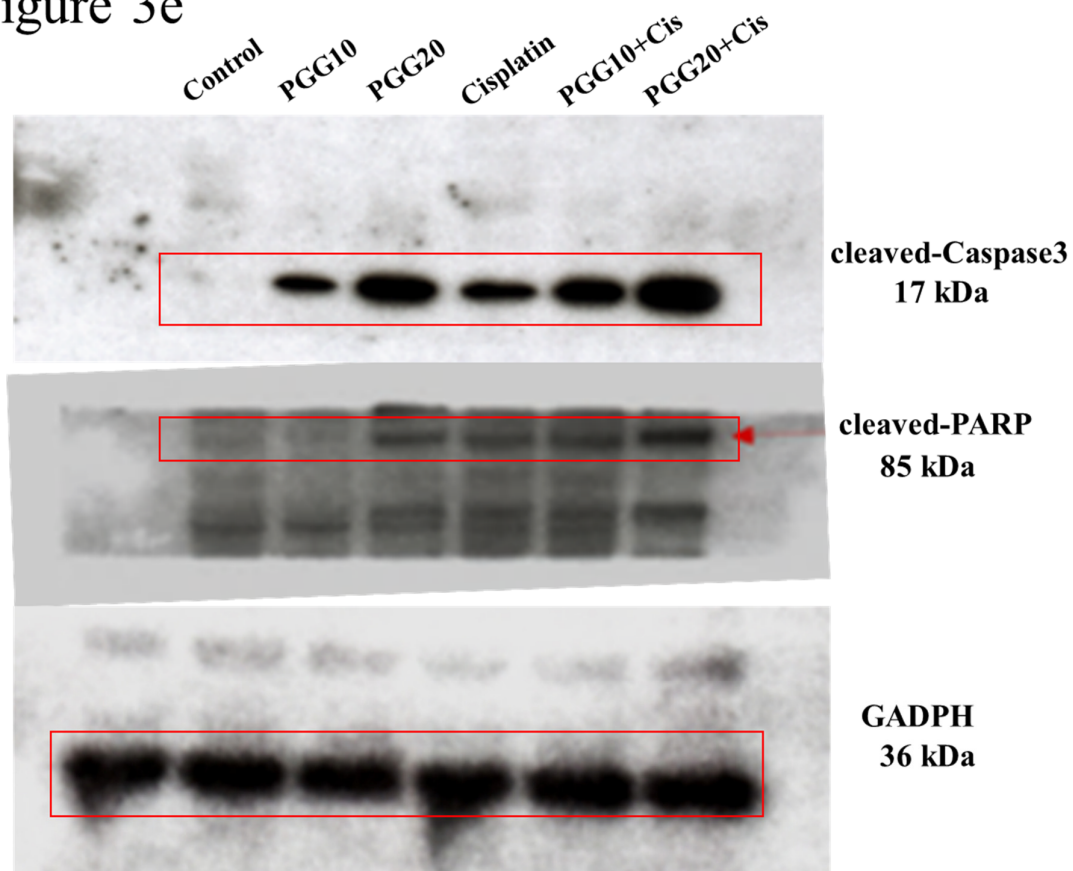
Figure 3d



**Supplementary Figure S4.** The uncropped Western blot images corresponding to Figure 3d showing all the bands. Red boxes indicate the samples of interest.



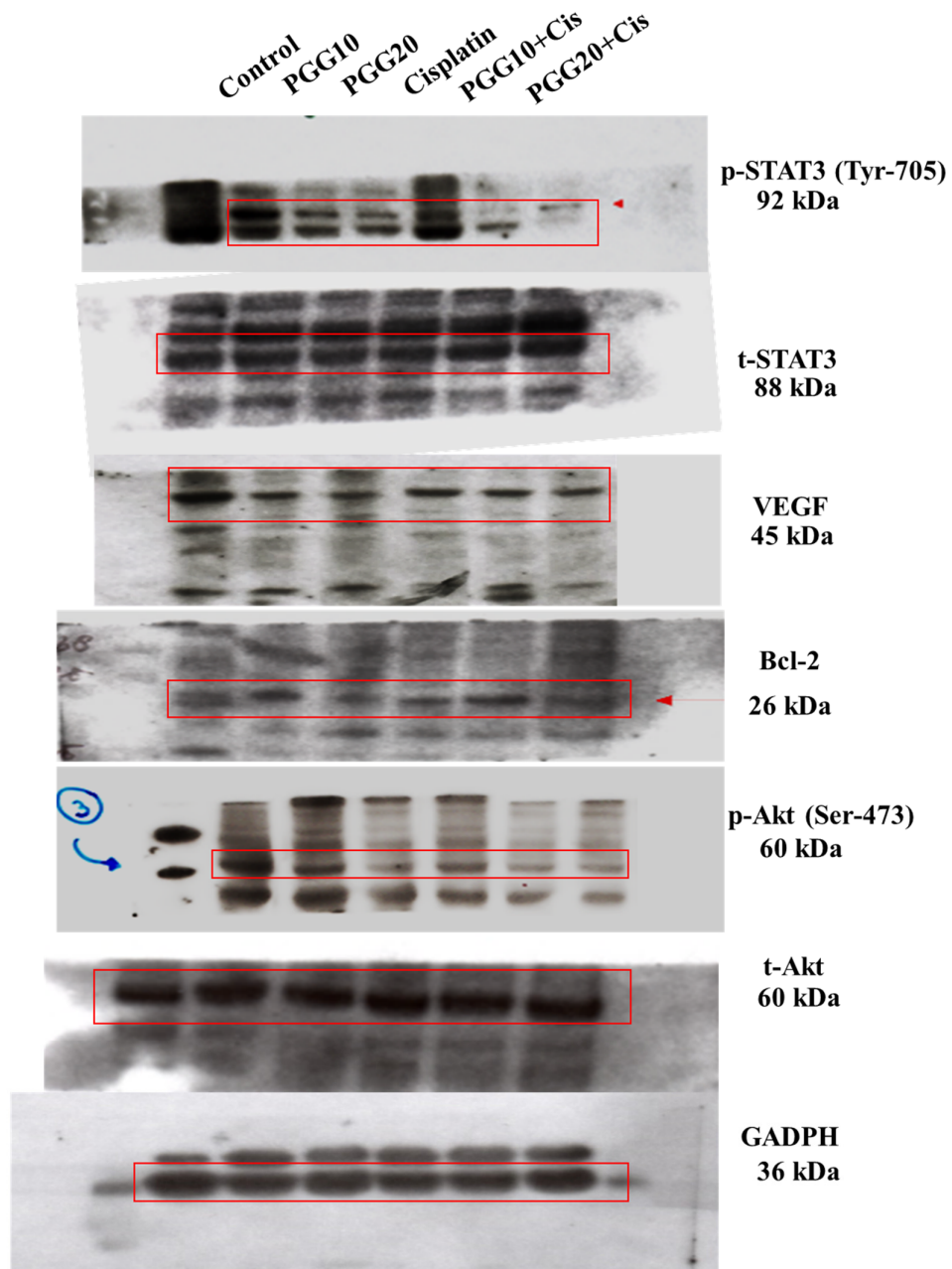
Figure 3e



**Supplementary Figure S5.** The uncropped Western blot images corresponding to Figure 3e showing all the bands. Red boxes indicate the samples of interest.



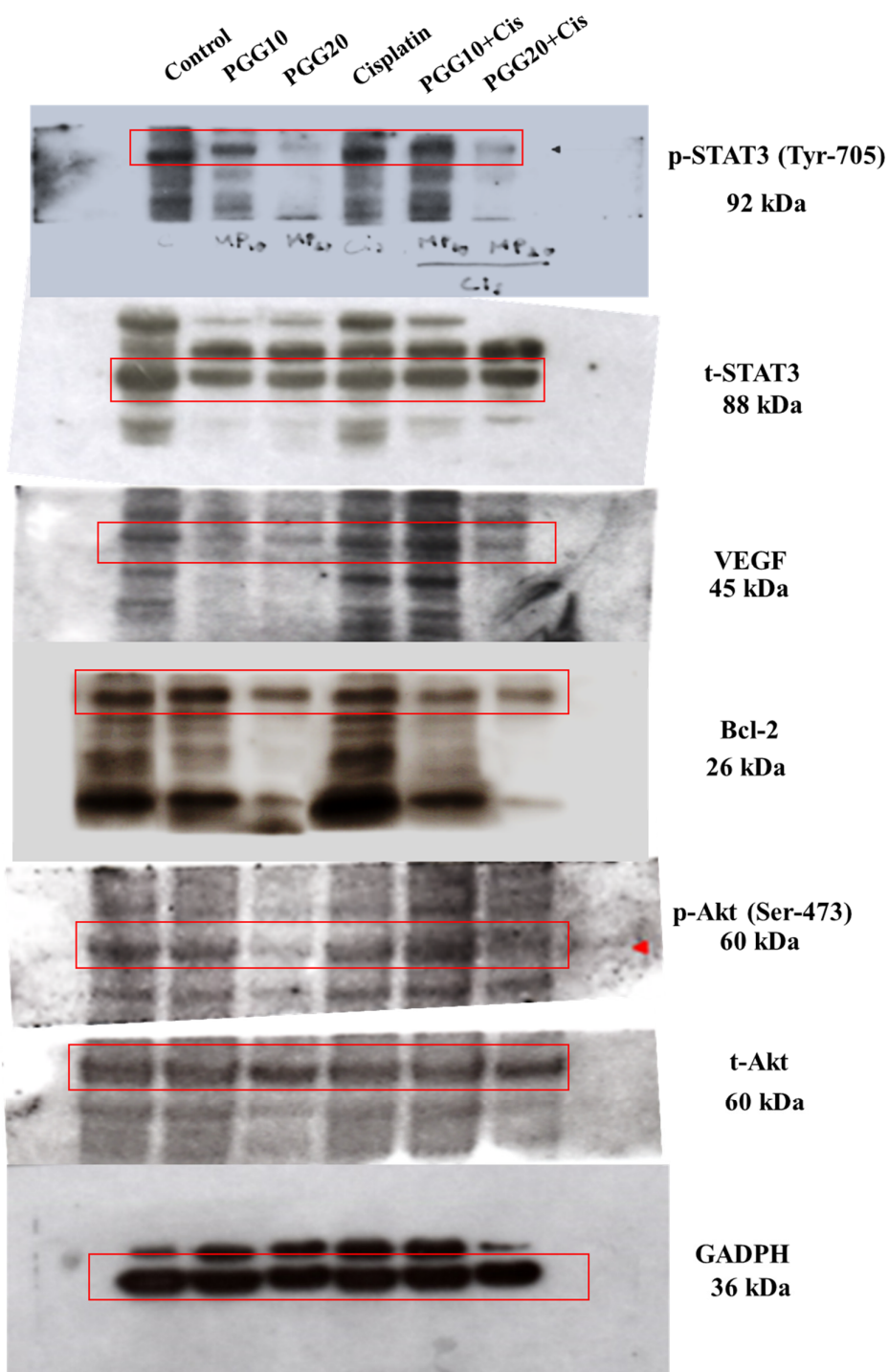
Figure 5a



**Supplementary Figure S6.** The uncropped Western blot images corresponding to Figure 5a showing all the bands. Red boxes indicate the samples of interest.



Figure 5c



**Supplementary Figure S7.** The uncropped Western blot images corresponding to Figure 5c showing all the bands. Red boxes indicate the samples of interest.