

Figure S1. IL-6 in rats submitted to partial liver ischemia (60 min) followed by reperfusion (120 min). Animals were orally administered with OCA 10 mg/kg/day in methylcellulose 1% for 5 days (n=12) or with vehicle alone (n=12). Sham-operated animals were subjected to the same procedure without clamping the vessels. n=6 rats/group. Results are expressed as median value \pm error bar (1-99 percentiles). Kruskal-Wallis test with Conover test.

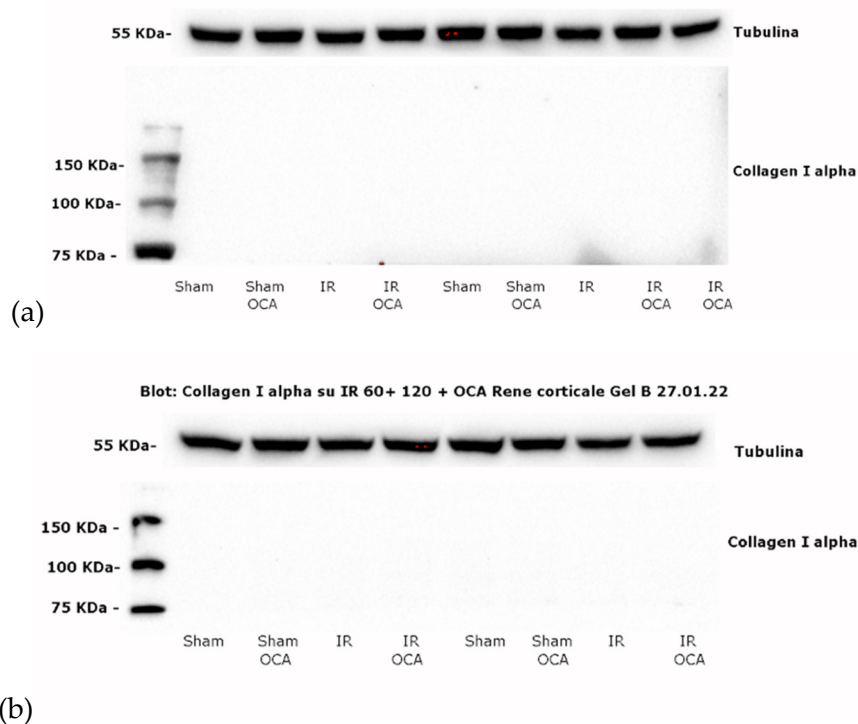


Figure S2. Collagen I expression levels, by Western Blots, were determined in kidney cortex (a) and medulla (b) of rats submitted to partial liver ischemia (60 min) followed by reperfusion (120 min). Sham-operated animals were subjected to the same procedure without clamping the vessels. n=6 rats/group.